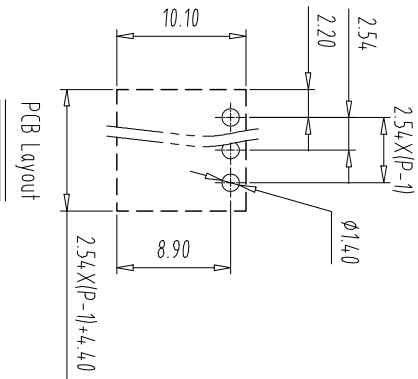
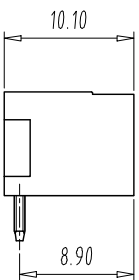
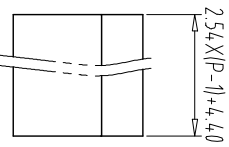
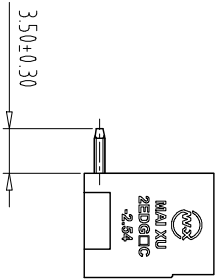
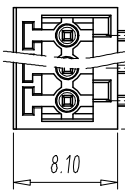
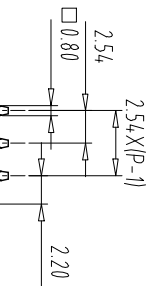


注：本板为禁止运输、复制、编辑文件，以及利用其内容进行交流

REV	ECN NO.	CONTENT	CHK	DATE
-----	---------	---------	-----	------



NOTES1:

UL Standard

1 Use group	B	C	D
Rated Current	5A	/	/
Rated Voltage	150V	/	/

2 withstanding voltage: AC1300V/1Min

IEC Standard

1 Pollution Degree	3	2	2
Overvoltage Category	III	III	II
Rate Impulse Voltage(KV)	1.5KV	2.5KV	2.5KV
Rate Voltage(V)	80V	160V	200V
Rate Current(A)	5A	5A	5A

NOTES2:

1 Housing: PA66 (UL94V-0)

2 Solder Pin: Brass (Sn Plated)

NOTES3:

1 Pitch: 2.54mm Poles: 02-24P

2 Operating temperature: -40℃~+105℃

3 RoHS Compliance

How to order

MX2EDGRC - 2.54 - XXP - XXXX - XX - X

产品型号 间距 极数 颜色: 01-带极颜色 02-99: A-7其他定制

颜色: 灰色:GY 蓝色:BU 黑色:BK 绿色:GN 透明色:TT 白色:WE
 橙色:OE 定制颜色
 Cu铜 Fe铁

Pitch	Range	In mm	Nominal Dimension	Range	In mm	Over	Over	Over	Over	Over	Over	Over	Over
mm													
	Over	6	Over	10	Over	30	Over	60	Over	100	Over	150	
	TO	6	TO	10	TO	30	TO	60	TO	100	TO	150	
		10		24		60		100		150			
±0.15	±0.20	±0.30	±0.30	±0.50	±0.70	±1.00	±1.30	±2°					

ITEM	NAME OF PART	NO. OF PART	Q'TY	MATERIAL	NOTE
DWG	CHK	APP			
	DATE	DATE	UNITS	MM	SHEET/OF
			SCALE	1:1	A4
			NAME	MX2EDGRC-2.54-XXP	
			DWGNO.		

MAIXU 慈溪市迈旭电子有限公司

CIXI MAIXU ELECTRONICS CO.,LTD

X-ON Electronics

Largest Supplier of Electrical and Electronic Components

Click to view similar products for [Pluggable Terminal Blocks](#) category:

Click to view products by [MAX](#) manufacturer:

Other Similar products are found below :

[57.510.0053](#) [MC 1.5/ 6-ST-3.5 GY AU](#) [ET02015000J0G](#) [860505](#) [860516](#) [860810](#) [GBPACX-12](#) [93.731.4953.0](#) [PV05-5,08-K](#) [PVP03-3,50](#)
[PVS02-5,00](#) [1-1986160-3](#) [1377680000](#) [1531000000](#) [1546228-5](#) [ELFP03110](#) [ELFP10210](#) [ELFT07250](#) [ELVD12100](#) [ELVF09400](#)
[ELVP03100](#) [ELXH071G0E](#) [1700410](#) [1746952](#) [1760336](#) [1800272](#) [1809474](#) [1855000000](#) [19346](#) [1946309](#) [1950227](#) [1973592](#) [19892](#)
[25.320.4053.1](#) [25.320.4553.9](#) [25.320.4753.1](#) [25.320.5453.1](#) [25.340.0353.1](#) [25.340.1053.1](#) [25.345.3553.0M001](#) [25.640.3553.1](#) [SH02-5,08](#)
[SH06-3,81](#) [SH08-5,08](#) [SH08-5,08-K](#) [SH12-5,08](#) [SHS04-5,00](#) [30.303](#) [30.305](#) [30.306](#)