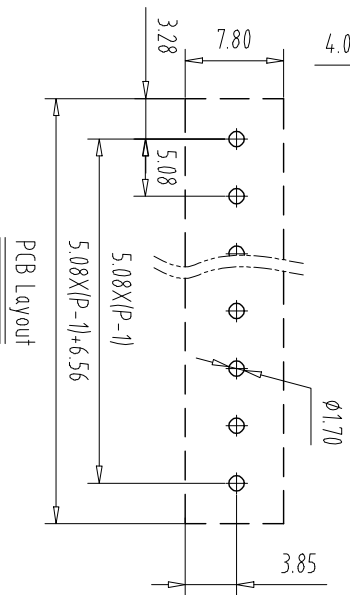
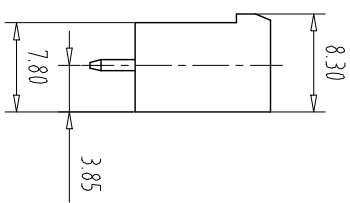
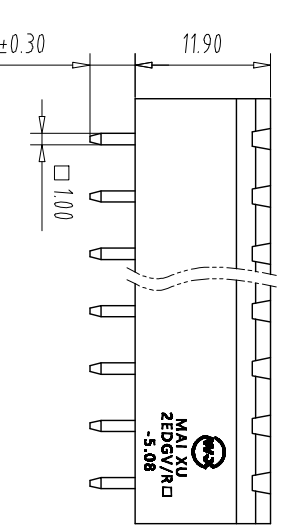
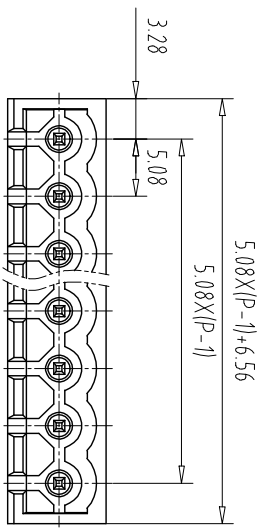


注: 本板为禁止运输、复制、翻印或仿造, 以及用其内容进行复制或交流



| REV | ECN NO. | 2 | CONTENT | CHK | DATE |
|-----|---------|---|---------|-----|------|
|     |         |   |         |     |      |

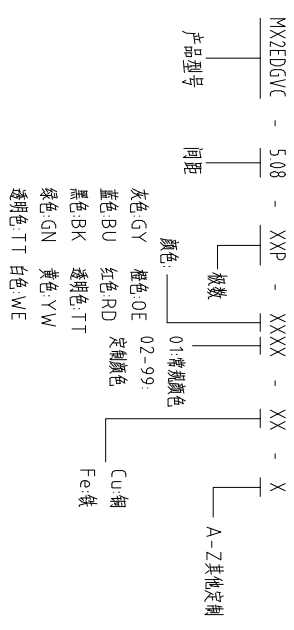
NOTES1:  
 UL Standard  
 1.Rating voltage/current: 300V/15A  
 2.withstanding voltage: AC2000V/1Min  
 IEC Standard

| 1.                       | Pollution Degree | 2 |
|--------------------------|------------------|---|
| Overvoltage Category     | III              |   |
| Rate Impulse Voltage(KV) | 4.0KV            |   |
| Rate Voltage(V)          | 320V             |   |
| Rate Current(A)          | 15A              |   |

NOTES2:  
 1.Housing: PA66 (UL94V-0)  
 2.Solder Pin: Brass (Sn Plated)

NOTES3:  
 1.Pitch: 5.08mm Poles: 02-24P  
 2.Operating temperature: -40℃~+105℃  
 3.RoHS Compliance

How to order



| Pitch Range In mm | Nominal Dimension Range In mm |            |            |            |            |             | - / □ | 0.1/10 |
|-------------------|-------------------------------|------------|------------|------------|------------|-------------|-------|--------|
|                   | Over 6 TO                     | Over 10 TO | Over 24 TO | Over 30 TO | Over 60 TO | Over 100 TO |       |        |
| ±0.15             | ±0.20                         | ±0.30      | ±0.30      | ±0.50      | ±0.70      | ±1.00       | ±1.30 | ±2°    |

| ITEM  | NAME OF PART | NO. OF PART | Q'TY  | MATERIAL | NOTE                              |
|---|--------------|-------------|-------|----------|-----------------------------------|
| DWG   | CHK          | DATE        | UNITS | MM       | SHEET/OF                          |
| APP   | DATE         | SCALE       | 1:1   | A4       | 1/1                               |
| CIXI MAIXU ELECTRONICS CO.,LTD<br>慈溪市迈旭电子有限公司 |              |             |       |          | NAME: MX2EDGVC-5.08-XXP<br>DWGNO. |

## X-ON Electronics

Largest Supplier of Electrical and Electronic Components

*Click to view similar products for [Pluggable Terminal Blocks](#) category:*

*Click to view products by [MAX](#) manufacturer:*

Other Similar products are found below :

[57.510.0053](#) [MC 1.5/ 6-ST-3.5 GY AU](#) [ET02015000J0G](#) [860505](#) [860516](#) [860810](#) [GBPACX-12](#) [93.731.4953.0](#) [PV05-5,08-K](#) [PVP03-3,50](#)  
[PVS02-5,00](#) [1-1986160-3](#) [1377680000](#) [1531000000](#) [1546228-5](#) [ELFP03110](#) [ELFP10210](#) [ELFT07250](#) [ELVD12100](#) [ELVF09400](#)  
[ELVP03100](#) [ELXH071G0E](#) [1700410](#) [1746952](#) [1760336](#) [1800272](#) [1809474](#) [1855000000](#) [19346](#) [1946309](#) [1950227](#) [1973592](#) [19892](#)  
[25.320.4053.1](#) [25.320.4553.9](#) [25.320.4753.1](#) [25.320.5453.1](#) [25.340.0353.1](#) [25.340.1053.1](#) [25.345.3553.0M001](#) [25.640.3553.1](#) [SH02-5,08](#)  
[SH06-3,81](#) [SH08-5,08](#) [SH08-5,08-K](#) [SH12-5,08](#) [SHS04-5,00](#) [30.303](#) [30.305](#) [30.306](#)