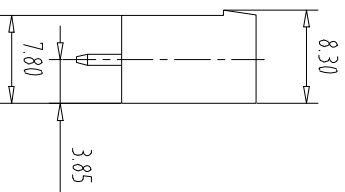
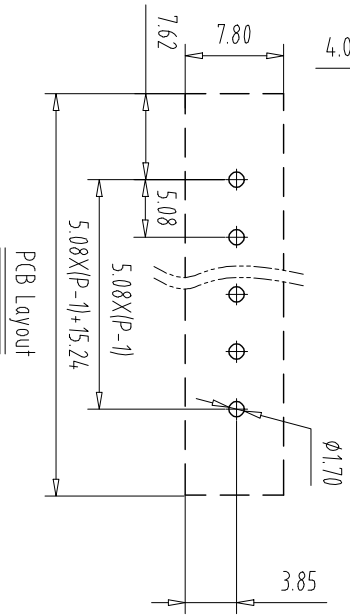
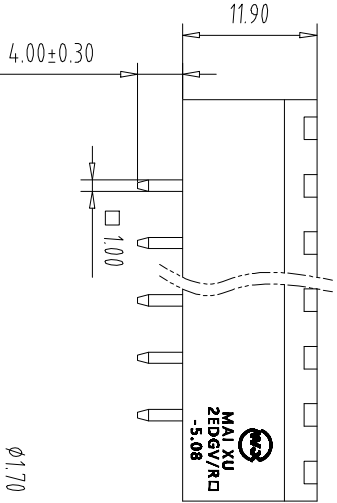
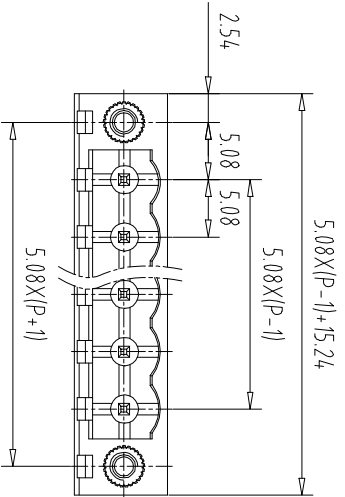


注: 本板为禁止传输、复制、编辑文件, 以及用其内容进行交流



| REV | ECN NO. | CONTENT | CHK | DATE |
|-----|---------|---------|-----|------|
|     |         |         |     |      |

NOTES1:

UL Standard

1.Rating voltage/current: 300V//15A

2.withstanding voltage: AC2000V//1Min

IEC Standard

| 1.                       | Pollution Degree | 2 |
|--------------------------|------------------|---|
| Overvoltage Category     | III              |   |
| Rate Impulse Voltage(KV) | 4.0KV            |   |
| Rate Voltage(V)          | 320V             |   |
| Rate Current(A)          | 15A              |   |

NOTES2:

1.Housing: PA66 (UL94V-0)

2.Solder Pin: Brass (Sn Plated)

3.Nut: Brass (M2.5)

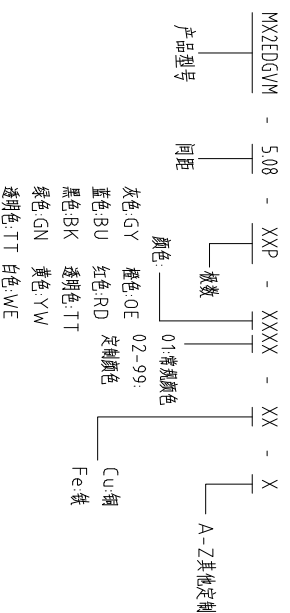
NOTES3:

1.Pitch: 5.08mm Poles: 02-24P

2.Operating temperature: -40℃~+105℃

3.RoHS Compliance

How to order



| Pitch Range | In mm | Nominal Dimension | In mm | Range   |    |         |    |          |    |          |        |
|-------------|-------|-------------------|-------|---------|----|---------|----|----------|----|----------|--------|
| Over 6      | TO    | Over 10           | TO    | Over 30 | TO | Over 60 | TO | Over 100 | TO | Over 150 | 0.1/10 |
| Over 10     | TO    | Over 24           | TO    | Over 30 | TO | Over 60 | TO | Over 100 | TO | Over 150 | ≤      |

| mm      | ±0.15 | ±0.20   | ±0.30 | ±0.30   | ±0.50 | ±0.70   | ±1.00 | ±1.30    | ±2° |          |        |          |        |
|---------|-------|---------|-------|---------|-------|---------|-------|----------|-----|----------|--------|----------|--------|
| Over 6  | TO    | Over 10 | TO    | Over 24 | TO    | Over 30 | TO    | Over 60  | TO  | Over 100 | TO     | Over 150 | 0.1/10 |
| Over 10 | TO    | Over 24 | TO    | Over 30 | TO    | Over 60 | TO    | Over 100 | TO  | Over 150 | 0.1/10 | ≤        |        |

| ITEM                           | NAME OF PART | NO. OF PART | Q'TY              | MATERIAL | NOTE     |
|--------------------------------|--------------|-------------|-------------------|----------|----------|
| DWG                            | CHK          | DATE        | UNITS             | MM       | SHEET/OF |
| APP                            | DATE         | SCALE       | 1:1               | A4       | 1/1      |
| CIXI MAIXU ELECTRONICS CO.,LTD |              |             | NAME              |          |          |
| MAIXU 慈溪市迈旭电子有限公司              |              |             | MX2EDGVM-5.08-XXP |          |          |
| DWGNO.                         |              |             |                   |          |          |

## X-ON Electronics

Largest Supplier of Electrical and Electronic Components

*Click to view similar products for [Pluggable Terminal Blocks](#) category:*

*Click to view products by [MAX](#) manufacturer:*

Other Similar products are found below :

[57.510.0053](#) [MC 1.5/ 6-ST-3.5 GY AU](#) [ET02015000J0G](#) [860505](#) [860516](#) [860810](#) [GBPACX-12](#) [93.731.4953.0](#) [PV05-5,08-K](#) [PVP03-3,50](#)  
[PVS02-5,00](#) [1-1986160-3](#) [1377680000](#) [1531000000](#) [1546228-5](#) [ELFP03110](#) [ELFP10210](#) [ELFT07250](#) [ELVD12100](#) [ELVF09400](#)  
[ELVP03100](#) [ELXH071G0E](#) [1700410](#) [1746952](#) [1760336](#) [1800272](#) [1809474](#) [1855000000](#) [19346](#) [1946309](#) [1950227](#) [1973592](#) [19892](#)  
[25.320.4053.1](#) [25.320.4553.9](#) [25.320.4753.1](#) [25.320.5453.1](#) [25.340.0353.1](#) [25.340.1053.1](#) [25.345.3553.0M001](#) [25.640.3553.1](#) [SH02-5,08](#)  
[SH06-3,81](#) [SH08-5,08](#) [SH08-5,08-K](#) [SH12-5,08](#) [SHS04-5,00](#) [30.303](#) [30.305](#) [30.306](#)