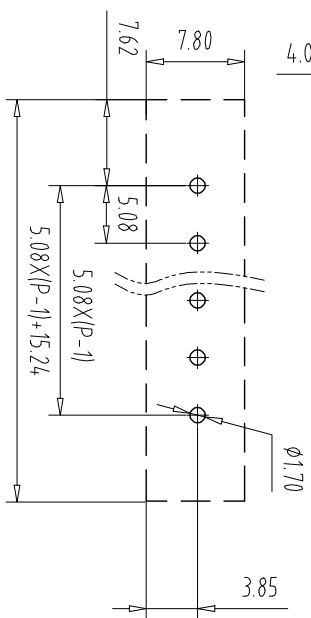
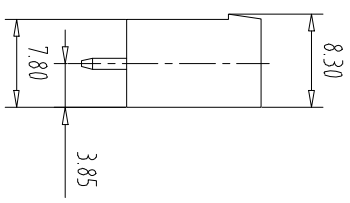
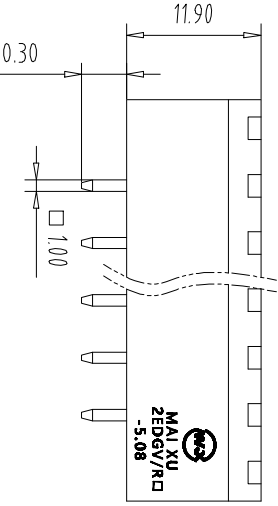
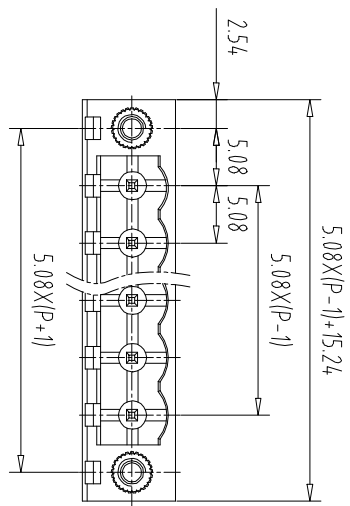


注: 本板为禁止传输、复制、翻印或传播, 以及用其内容进行复制或传播



REV	ECN NO.	CONTENT	CHK	DATE

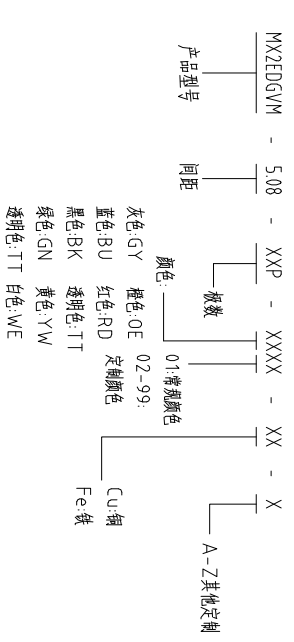
NOTES1:  
 UL Standard  
 1.Rating voltage/current: 300V//15A  
 2.withstanding voltage: AC2000V//1Min  
 IEC Standard

1.	Pollution Degree	2
Overvoltage Category	III	
Rate Impulse Voltage(KV)	4.0KV	
Rate Voltage(V)	320V	
Rate Current(A)	15A	

NOTES2:  
 1.Housing: PA66 (UL94V-0)  
 2.Solder Pin: Brass (Sn Plated)  
 3.Nut: Brass (M2.5)

NOTES3:  
 1.Pitch: 5.08mm Poles: 02-24P  
 2.Operating temperature: -40℃~+105℃  
 3.RoHS Compliance

How to order



Pitch	Range	In mm	Nominal Dimension	Range	In mm	Over	Range	In mm	Over	Range	In mm	Over	Range	In mm	Over	Range	In mm
TO	6	10	24	TO	30	60	TO	60	100	TO	100	150	TO	150	0.1/10	±2°	±0.15
TO	6	10	24	TO	30	60	TO	60	100	TO	100	150	TO	150	0.1/10	±2°	±0.20
TO	6	10	24	TO	30	60	TO	60	100	TO	100	150	TO	150	0.1/10	±2°	±0.30
TO	6	10	24	TO	30	60	TO	60	100	TO	100	150	TO	150	0.1/10	±2°	±0.50
TO	6	10	24	TO	30	60	TO	60	100	TO	100	150	TO	150	0.1/10	±2°	±0.70
TO	6	10	24	TO	30	60	TO	60	100	TO	100	150	TO	150	0.1/10	±2°	±1.00
TO	6	10	24	TO	30	60	TO	60	100	TO	100	150	TO	150	0.1/10	±2°	±1.30
TO	6	10	24	TO	30	60	TO	60	100	TO	100	150	TO	150	0.1/10	±2°	±1.50

ITEM	NAME OF PART	NO. OF PART	Q'TY	MATERIAL	NOTE
DWG	CHK	DATE	UNITS	MM	1/1
APP	DATE	SCALE	SCALE	A4	1/1
CIXI MAIXU ELECTRONICS CO.,LTD			NAME	MX2EDGVM-5.08-XXP	
MAI XU 慈溪市迈旭电子有限公司			DWGNO.		

## X-ON Electronics

Largest Supplier of Electrical and Electronic Components

*Click to view similar products for [Pluggable Terminal Blocks](#) category:*

*Click to view products by [MAX](#) manufacturer:*

Other Similar products are found below :

[57.510.0053](#) [MC 1.5/ 6-ST-3.5 GY AU](#) [ET02015000J0G](#) [860505](#) [860516](#) [860810](#) [GBPACX-12](#) [93.731.4953.0](#) [PV05-5,08-K](#) [PVP03-3,50](#)  
[PVS02-5,00](#) [1-1986160-3](#) [1377680000](#) [1531000000](#) [1546228-5](#) [ELFP03110](#) [ELFP10210](#) [ELFT07250](#) [ELVD12100](#) [ELVF09400](#)  
[ELVP03100](#) [ELXH071G0E](#) [1700410](#) [1746952](#) [1760336](#) [1800272](#) [1809474](#) [1855000000](#) [19346](#) [1946309](#) [1950227](#) [1973592](#) [19892](#)  
[25.320.4053.1](#) [25.320.4553.9](#) [25.320.4753.1](#) [25.320.5453.1](#) [25.340.0353.1](#) [25.340.1053.1](#) [25.345.3553.0M001](#) [25.640.3553.1](#) [SH02-5,08](#)  
[SH06-3,81](#) [SH08-5,08](#) [SH08-5,08-K](#) [SH12-5,08](#) [SHS04-5,00](#) [30.303](#) [30.305](#) [30.306](#)