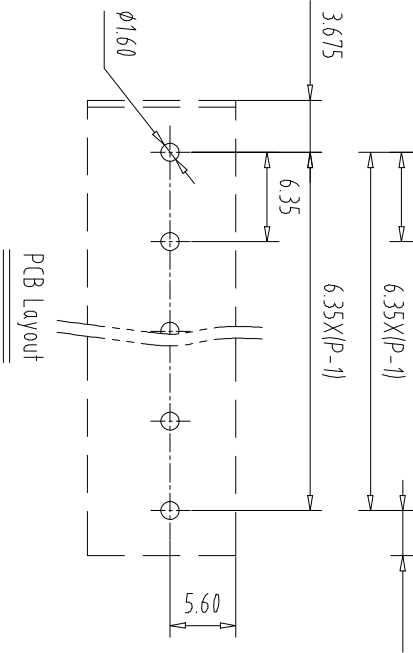
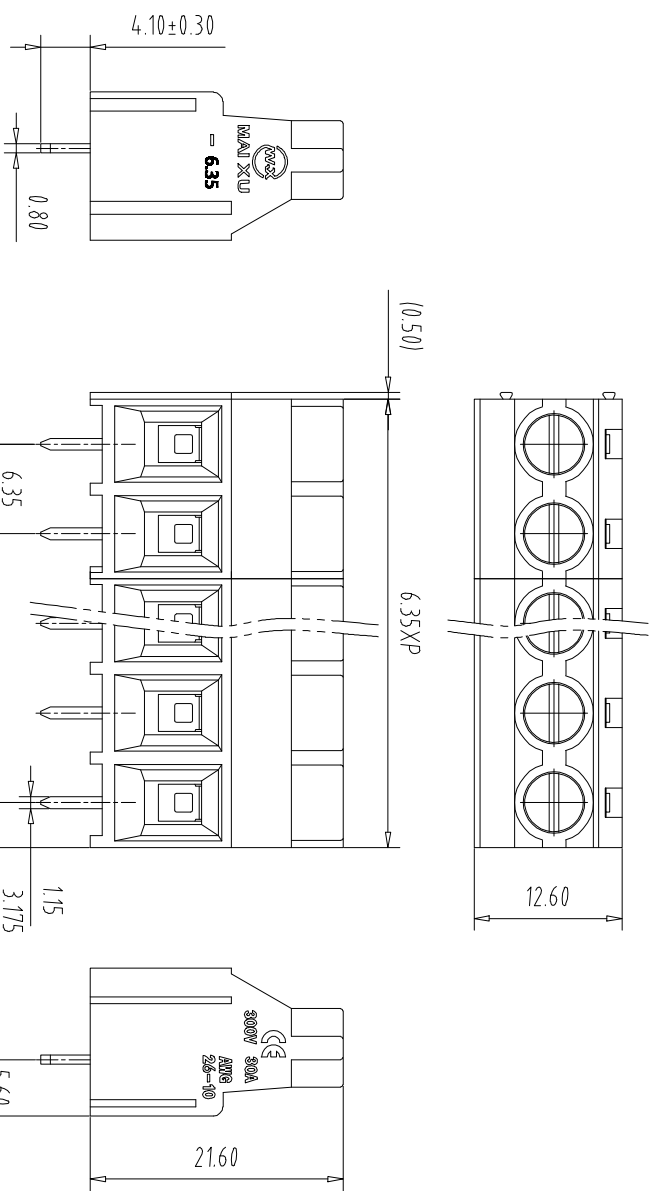


注：本板为禁止运输、复制、翻印或仿造，以及用其内容进行复制或传播。



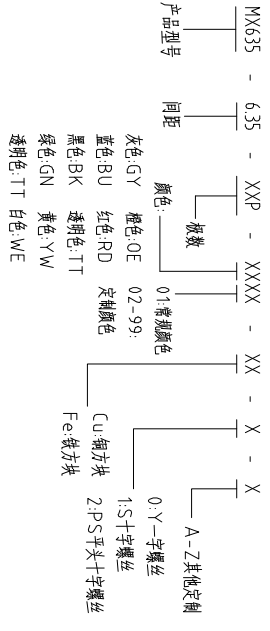
| REV | ECN NO. | CONTENT | CHK | DATE |
|-----|---------|---------|-----|------|
| | | | | |

NOTES1:
 UL Standard
 1.Rating voltage/current: 300V/30A
 2.withstanding voltage: AC2500V/1Min
 3.Torque value: M3, 4,4.3Lb.in
 4.Wire range: 26~10AWG
 IEC Standard
 1.1.Rating voltage/current: 450V/32A
 2. Torque value: M3, 0.5Nm
 3.wire range: 15-4.0mm²

NOTES2:
 1.Housing: PA66(UL94V-0)
 2.Solder Pin: Copper alloy(Sn Plated)
 3.Cage: Brass(Ni Plated)
 4.Screw: Steel(M3,Zn Plated)

NOTES3:
 1.Pitch: 6.35mm Poles: 02-24P
 2.Stripping length: 7-8mm
 3.Operating temperature: -40℃~+105℃
 4.RoHS Compliance

How to order



| Pitch | Range | In mm | Nominal Dimension | Range | In mm | Over | Range | In mm | Over | Range | In mm | Over | Range | In mm | Over | Range | In mm |
|-------|-------|-------|-------------------|-------|-------|------|-------|--------|-------|-------|-------|-------|-------|-------|-------|-------|-------|
| TO | 6 | 10 | 24 | 30 | 60 | 100 | 150 | 0.1/10 | ±0.15 | ±0.20 | ±0.30 | ±0.30 | ±0.50 | ±0.70 | ±1.00 | ±1.30 | ±2° |

| ITEM | NAME OF PART | NO. OF PART | Q-TY | MATERIAL | NOTE |
|--------------------------------|--------------|-------------|--------|----------------|------|
| DWG | CHK | DATE | SCALE | SHEET/OF | 1/1 |
| APP | DATE | DATE | SCALE | A4 | 1/1 |
| CIXI MAIXU ELECTRONICS CO.,LTD | | | NAME | MX635-6.35-XXP | |
| 慈溪市迈旭电子有限公司 | | | DWGNO. | | |

X-ON Electronics

Largest Supplier of Electrical and Electronic Components

Click to view similar products for [Fixed Terminal Blocks](#) category:

Click to view products by [MAX](#) manufacturer:

Other Similar products are found below :

[MBE-1512](#) [MBE-1520](#) [MBE-154](#) [MBE-156](#) [MBES-156](#) [MH-2512](#) [MHE-132](#) [MHE-163](#) [MI-254 \(35\)](#) [MI-272](#) [MPT-275](#) [15602-04-08-21](#)
[ELM10110G](#) [BA311TU](#) [BA411SU](#) [MV-254-D](#) [MV-255](#) [MV-493](#) [MVE-252](#) [MVE-253](#) [MVEB-153](#) [1705142](#) [1712417](#) [1713088](#) [1745195](#)
[1760594](#) [1-796689-8](#) [1800114](#) [20020314-C121B01LF](#) [KP03215000J0G](#) [KP04215000J0G](#) [S451](#) [29.007](#) [29.116](#) [30.204](#) [30.503](#) [30.756](#)
[30.853](#) [996750](#) [1710052](#) [1777707](#) [1-796692-3](#) [20020316-G071B01LF](#) [20020327-C061B01LF](#) [29590](#) [30.652](#) [30.710](#) [30.754](#) [30.757](#) [32.058](#)