

MAXIM

MAX197 Evaluation Kit

Evaluates: MAX197/MAX199

General Description

The MAX197 evaluation system (EV system) is a complete, low-cost, 8-channel data-acquisition system consisting of a MAX197 evaluation kit (EV kit) and a Maxim 80C32 or 68HC16 microcontroller (μ C) module. IBM PC compatible software provides a handy user interface to demonstrate the MAX197's many features. Source code is provided.

The MAX197 EV kit requires a single +5V supply and includes optional input buffer amplifiers that operate with $\pm 15V$ supplies.

The MAX197 EV kit and EV system evaluate both the MAX197 and the MAX199. To evaluate the MAX199, order a sample of the MAX199 along with the MAX197 EV kit.

Features

- ◆ Proven PC Board Layout
- ◆ Complete Evaluation System
- ◆ Convenient Test Points Provided On-Board
- ◆ Data Logging Software
- ◆ Source Code Provided
- ◆ Fully Assembled and Tested
- ◆ User-Selected Microcontroller Module 80C32 or 68HC16

Ordering Information

PART	TEMP. RANGE	BOARD TYPE
MAX197EVKIT-DIP	0°C to +70°C	Through-Hole
MAX197EVC16-DIP	0°C to +70°C	Through-Hole
MAX197EVC32-DIP	0°C to +70°C	Through-Hole

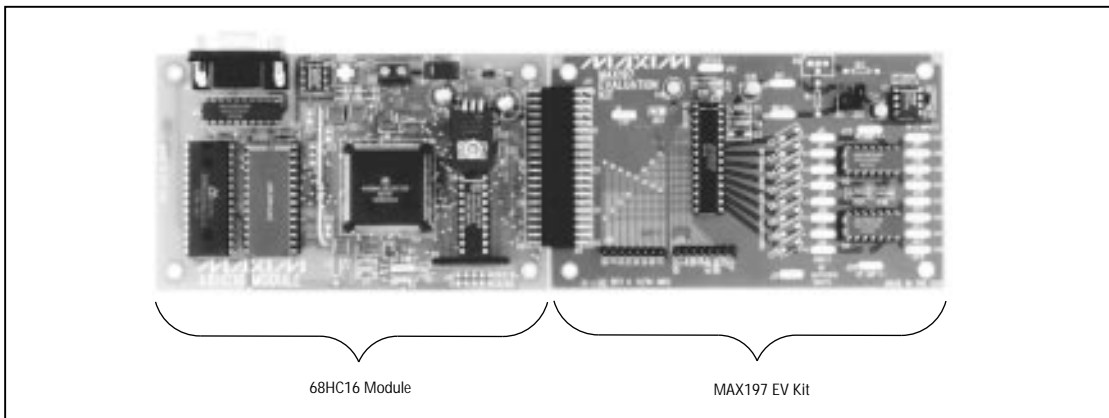
MAX197 EVC16 System Component List

QTY	DESCRIPTION
1	MAX197 Evaluation Kit (MAX197EVKIT-DIP)
1	68HC16 μ C Module (68HC16MODULE-DIP)

MAX197 EVC32 System Component List

QTY	DESCRIPTION
1	MAX197 Evaluation Kit (MAX197EVKIT-DIP)
1	80C32 μ C Module (80C32MODULE-DIP)

MAX197 EVC16 System



MAX197 Evaluation Kit

MAX197 EV Kit Component List

DESIGNATION	QTY	DESCRIPTION
C1, C8, C15, C16, C17	5	0.1 μ F ceramic capacitors
C2-C7, C9, C12, C13	0	Open
C10, C14, C18	3	10 μ F tantalum capacitors
C11	1	100pF ceramic capacitor
J11	1	2 x 20 header
J15, J16	2	8-pin headers
JU1	1	2-pin header
JU2	1	3-pin header
JU3, JU4	0	Open
R1, R2, R3	0	Open
U1	1	MAX197BCNI
U2	1	MAX874CPA 4.096V reference
U3, U4	2	MXL1014CN quad op amps

MAX197 Stand-Alone EV Kit

The MAX197 EV kit provides a proven PC board layout to facilitate evaluation of the MAX197. It must be interfaced to appropriate timing signals for proper operation. Refer to the MAX197 data sheet for timing requirements.

MAX197 EV System Quick Start

- Copy the files from the distribution disk to your hard disk or to blank floppy disks. The MAX197 EV kit software should be in its own directory. The necessary files are in the root directory of the distribution disk, and the source code is in the SOURCE subdirectory. The SOURCE subdirectory is not required to operate the EV kit.
- Carefully connect the boards together by aligning the 40-pin header of the MAX197 EV kit with the 40-pin connector of the μ C module. Gently press them together. The two boards should be flush against each other.
- Connect a +15V/-15V DC power supply to the OPAMP V+ / OPAMP V- inputs of the MAX197 EV kit. Connect the power supply's COMMON terminal to the kit's AGND pad.
- Connect a 9V to 15V DC power source to the μ C module. The terminal block is located next to the on/off switch, in the upper right corner of the μ C module. Observe the polarity marked on the board. The same +15V supply that powers OPAMP V+ can be used to power the μ C module.
- Connect a cable from the computer's serial port to the μ C module. If using a 9-pin serial port, use a straight-through, 9-pin female-to-male cable. If the only available serial port uses a 25-pin connector, a standard 25-pin to 9-pin adapter will be required. The EV kit software checks the modem status lines (CTS, DSR, DCD) to confirm that the correct port has been selected.
- Start the MAX197 software on the IBM PC by setting the current directory to match the directory that contains the Maxim programs, and then type the program name, "MAX197". Do not turn off or disconnect the μ C module while the program is running; if you do, you will have to restart the program.
- The program will ask which μ C module is being used and to which port it is connected. Press the space bar until the correct port is highlighted, and press C until the correct μ C module is highlighted. Press ENTER when both are correct. The MAX197 program will be in terminal emulation mode.
- Turn on the power for the μ C module. The μ C module will display its logon banner and test its RAM.
- Download and run the RAM resident program on the μ C module by pressing ALT+L (i.e., hold down the ALT key as you strike the L key). The program prompts you for the file name. Press the ENTER key to download and run the file.
- Press ALT+C to switch to the Control Panel screen after the RAM resident program has been successfully downloaded.
- Apply input signals to the CH0-CH7 inputs at the right edge of the MAX197 EV kit board. Observe the readout on the screen. Table 1 lists the commands available from the control-panel screen.
- Before turning off power to the MAX197 EV kit, exit the program by pressing ALT+X.

MAX197 Evaluation Kit

Evaluates: MAX197/MAX199

__Detailed Description of Software

Reading the MAX197

The EV kit reads the MAX197 using the algorithm shown in source code Listings 1a and 1b.

When power is first applied, the MAX197 is in external clock mode. However, the initialization software reconfigures the MAX197 to internal clock mode.

The EV kit software demonstrates the MAX197's many modes of operation. When writing your own application-specific software, one of the following simplified algorithms (shown in bold type) should be implemented. These algorithms show the options available using the power-down and acquisition mode control bits. Except where otherwise specified, ACQMOD = 0.

When using an external reference, a power-up delay is not necessary. When using the MAX197's internal reference, allow time for the REF capacitor to charge at power-up and when exiting full power-down mode. For a complete description of all control bits, refer to the MAX197 data sheet.

Internal acquisition mode, standby power-down between conversions:

- 1) Begin conversion by writing PD1 = 1, PD0 = 0. This powers up the MAX197, causing it to perform a conversion, then go into standby mode after conversion completes.
- 2) After the $\overline{\text{INT}}$ pin goes low, read the result from the MAX197.

Internal acquisition mode, full power-down between conversions:

- 1) Power up the MAX197 by writing PD1 = 1, PD0 = 0 (standby).
- 2) Execute a power-up delay, to allow the reference capacitor time to recharge.
- 3) Begin conversion by writing PD1 = 1, PD0 = 1 (full power-down).
- 4) After the $\overline{\text{INT}}$ pin goes low, read the result from the MAX197.

Internal acquisition mode, $\overline{\text{SHDN}}$ pin low between conversions:

- 1) Power up the MAX197 by setting the $\overline{\text{SHDN}}$ pin high.
- 2) Execute a power-up delay to allow the reference capacitor time to recharge.

- 3) Begin conversion by writing PD1 = 1, PD0 = 0 (standby).

- 4) After the $\overline{\text{INT}}$ pin goes low, read the 16-bit result from the MAX197.

- 5) Power down the MAX197 by setting the $\overline{\text{SHDN}}$ pin low.

External acquisition mode, standby power-down between conversions:

- 1) Begin acquisition time by writing PD1 = 1, PD0 = 0 (standby), ACQMOD = 1.

- 2) Execute the acquisition time delay.

- 3) Begin conversion by writing PD1 = 1, PD0 = 0 (standby), ACQMOD = 0.

- 4) After the $\overline{\text{INT}}$ pin goes low, read the result from the MAX197.

External acquisition mode, full power-down between conversions:

- 1) Power up the MAX197 by writing PD1 = 1, PD0 = 0 (standby).

- 2) Execute a power-up delay, to allow the reference capacitor time to recharge.

- 3) Begin acquisition time by writing PD1 = 1, PD0 = 0 (standby), ACQMOD = 1.

- 4) Execute the acquisition time delay.

- 5) Begin conversion by writing PD1 = 1, PD0 = 1 (full power-down), ACQMOD = 0.

- 6) After the $\overline{\text{INT}}$ pin goes low, read the result from the MAX197.

External acquisition mode, $\overline{\text{SHDN}}$ pin low between conversions:

- 1) Power up the MAX197 by setting the $\overline{\text{SHDN}}$ pin high.

- 2) Execute a power-up delay, to allow the reference capacitor time to recharge.

- 3) Begin acquisition time by writing PD1 = 1, PD0 = 0 (standby), ACQMOD = 1.

- 4) Execute the acquisition time delay.

- 5) Begin conversion by writing PD1 = 1, PD0 = 0 (standby), ACQMOD = 0.

- 6) After the $\overline{\text{INT}}$ pin goes low, read the result from the MAX197.

- 7) Power down the MAX197 by setting the $\overline{\text{SHDN}}$ pin low.

MAX197 Evaluation Kit

Evaluates: MAX197/MAX199

Listing 1a. Using the 68HC16 to Read the MAX197

```
; Assumptions:
; Index register X points to the MAX197 address
; Index register Y points to global variables area
; MAX197 INT pin inputs to IC1 of the GPT port
; MAX197 SHDN pin is driven by OC1 of the GPT port (or else it should be tied high)

F507          ldab #$07      ; point index X to the MAX197's address
379C          tbxc          ; ($07E000 on the Maxim 68HC16 Module)
37BC E000     ldx  #$E000

; optional -- set SHDN pin high
3908 F907     bset $F907,#8

; optional power-up delay
3755 000C     lde  _power_up_delay,y
37D5 0006     ldd  _control_word,y          ; out ((control_word & ~ 0xC0)|0x80);
F63F         andb #$3F ; cTear PD1,PD0
F780         orab #$80 ; set PD1
CA00         stab 0,X
27FB         ted
FAxx xxxx     jsr  delay

; optional software-controlled acquisition time
3755 000E     lde  _acq_delay,y
37D5 0006     ldd  _control_word,y          ; out ((control_word & ~ 0xC0)|0xA0);
F63F         andb #$3F ; cTear PD1,PD0
F7A0         orab #$A0 ; set PD1,ACQMOD
CA00         stab 0,X
27FB         ted
FAxx xxxx     jsr  delay

; start the conversion by writing the control word to the MAX197
37D5 0006     ldd  _control_word,y
CA00         stab 0,X          ; out (control_word);

; poll the INT pin until the MAX197 conversion is complete
while1:      brclr $F907,#1,while1          ; while (INT pin is high) {

3A01 F907     brclr $F907,#1,while1
0014
37B5 55AA     ldd  #$55AA ; reset software watchdog timer
177A FA27     staa swsr
17FA FA27     stab swsr
1775 FC0D     ldaa scsr+1          ; if (serial_character_received()) break;
7640         anda #$40
B7E2         beq  while1          ; }

while1:

; optional -- bring SHDN pin low
37D5 000A     ldd  _using_shdn_pin,y          ; if (using_shdn_pin) {
F800         cmpb #0
B700         beq  ifelse4
3808 F907     bclr $F907,#8          ; clearbit(SHDN pin);
ifelse4:     ; }

; read data word from MAX197
8500         ldd  0,X          ; read word from MAX197
371A         xgab          ; swap low and high words
37DA 0008     std  _last_word_read,y
```

MAX197 Evaluation Kit

Listing 1b. Using the 80C32 to Read the MAX197

```

; Assumptions:
; MAX197 maps to address C000 (low byte) and C001 (high byte)
; MAX197 INT pin inputs to P1.0
; MAX197 SHDN pin is driven by P1.3 (or else it should be tied high)
; global variables are in internal RAM

=0093#          SHDNPIN equ P1.3
=0090#          INTPIN  equ P1.0

; optional -- set SHDN pin high
D2 93          setb SHDNPIN

; optional power-up delay
E5 24          mov a,_control_word          ; out ((control_word & ~ 0xC0) | 0x80);
54 3F          anl a,#03Fh ; clear PD1,PD0
44 80          orl a,#080h ; set PD1
90 C000        mov dptr,#0C000h
F0            movx @dptr,a
AA 29          mov r2,_power_up_delay_l    ; delay (power_up_delay);
AB 2A          mov r3,_power_up_delay_h

delay_loopp:
C3            clr c
EA            mov a,r2
94 09          subb a,#09h
FA            mov r2,a
EB            mov a,r3
94 00          subb a,#00h
FB            mov r3,a
50 F5'        jnc delay_loopp

; optional software-controlled acquisition time
E5 24          mov a,_control_word          ; out ((control_word & ~ 0xC0) | 0xA0);
54 3F          anl a,#03Fh ; clear PD1,PD0
44 A0          orl a,#0A0h ; set PD1,ACQMOD
90 C000        mov dptr,#0C000h
F0            movx @dptr,a
E5 2B          mov a,_acq_delay
FD            mov r5,a
0D            inc r5

delay_loopa:
DD FE'        DJNZ r5,delay_loopa          ; delay (acq_delay);

; start the conversion by writing the control word to the MAX197
E5 24          mov a,_control_word
90 C000        mov dptr,#0C000h          ; out (control_word)
F0            movx @dptr,a

; poll the INT pin until the MAX197 conversion is complete
while1:
30 90# 03'     jnb INTPIN,while1          ; while (INT is high) {
30 98# FA'     jnb RI,while1              ; if (keypressed()) break;
while1:
; }

; optional -- bring SHDN pin low
C2 93          clr SHDNPIN

; read data word from MAX197
90 C000        mov dptr,#0C000h
E0            movx a,@dptr
F5 26          mov _last_word_read_l,a
90 C001        mov dptr,#0C001h
E0            movx a,@dptr
F5 27          mov _last_word_read_h,a

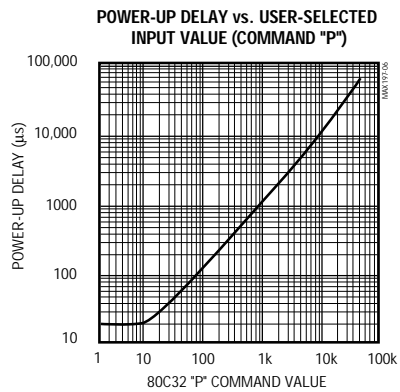
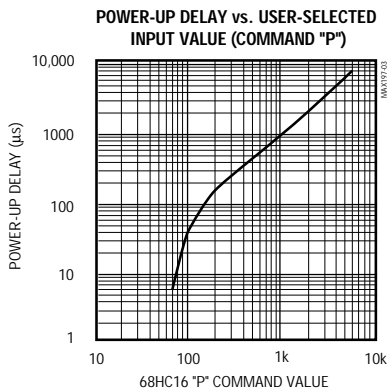
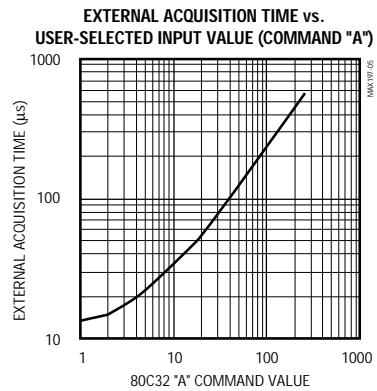
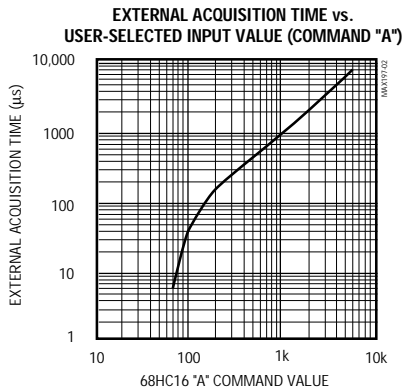
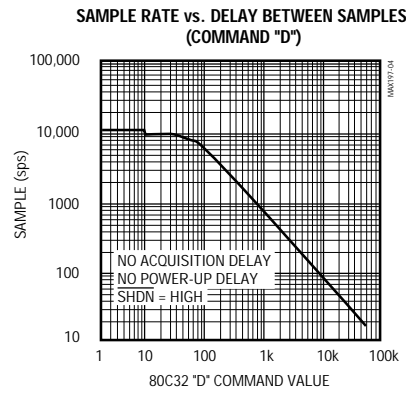
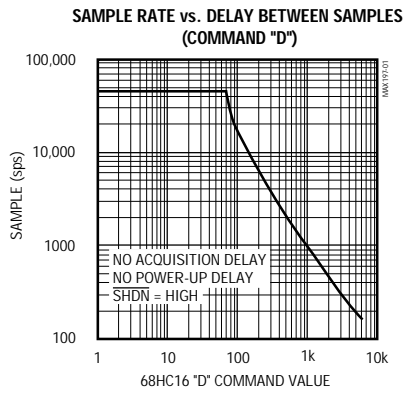
```

Evaluates: MAX197/MAX199

MAX197 Evaluation Kit

68HC16 Module
 Typical Timing Characteristics

80C32 Module
 Typical Timing Characteristics



MAX197 Evaluation Kit

Evaluates: MAX197/MAX199

Shutdown Power Cycling

From the control panel, use the up/down arrow keys to select the power-down mode. STANDBY power cycling puts the MAX197 in standby mode between readings, and FULLPD turns off everything except the 2.5V bandgap reference. The MAX197 is always fully powered during conversions. The MAX197's shutdown pin can be used to put the device into FULLPD mode. When using FULLPD or SHDN, a power-up delay may be necessary to allow the reference buffer time to recharge. From the control panel, use the "P" command to set this power-on delay. The 68HC16 software allows delays between 68 μ s and 6000 μ s. The 80C32 software allows delays between 8 μ s and 65535 μ s. A value of 0 disables the delay. Refer to the *Typical Timing Characteristics* to see the relationship between the value selected on the corresponding power-up delay.

Low-Speed Data Logging

The RS-232 serial link limits the data logging sample rate to no more than 10sps (samples per second). The data logging command can be used to write data to a user-specified file in plain comma-spaced-value text format. From the control panel screen, press L. If a log file is not already open, the software will ask for a file name. Only one log file is allowed per session. Once a log file has been opened, pressing L toggles data logging on or off. While data logging is enabled, the word "Logging" will flash on the screen. One complete line of data is written to the log file after all enabled channels have been sampled.

The first line of the log file contains the column headings. Each subsequent line of the log file contains all eight channels, separated by commas. The values are written as raw decimal output codes or as scaled voltages, depending on which setting the control panel is currently displaying. Use the C and V commands to select the display format (see Table 1). F3, the log data marker command, can be used to sequentially tag different sections of the log file to indicate a change in setup or input conditions. Pressing F3 writes an extra entry at the end of the current line of the data log, which can be useful for indicating a change in setup or input conditions.

High-Speed Data Sampling

For sampling rates over 10sps, the S command can be used. Data can be collected from only one of the eight channels at a rate from 100sps up to 45ksps for the 68HC16 module (10sps to 10ksps for the 80C32 module). First, select the channel by pressing one of the number keys 0–7. Next, press F to specify the name of the file into which the samples should be written. If the file already exists, the screen will say "**** file already exists****". To begin collecting data, press B. After 1024 samples have been collected, the data is automatically uploaded to the host and stored in the sample file.

Controlling the Sampling Rate

The rate for high-speed sampling, data logging, and the oscilloscope demo mode (see Table 1, key "O") is controlled by the D (delay between samples) command.

When used with the sample or oscilloscope demo commands, specify the approximate delay in microseconds by typing D, the approximate delay time, then "usec". Refer to the *Typical Timing Characteristics* to see the relationship between the value selected and the corresponding delay between samples. Due to code overhead, this delay is not perfectly linear, so timing should always be verified using an oscilloscope. The fast sampling screen and oscilloscope demo mode use delays on the order of 100 μ s to 1000 μ s. The 80C32 software supports delays between 24 μ s and 73ms, but the 68HC16 software only supports delays between 68 μ s and 6000 μ s.

When used with the slower data-logging command, specify the delay in seconds. This delay is defined as the time between two consecutive conversions.

Tare Command (software offset null)

The tare command is used to compensate in software for the offset voltage. Connect the channel 0 input pin to ground (or, if driving with an op amp, connect the channel 0 op amp's input to ground instead). The "T" command measures the offset voltage on channel 0 and subtracts that offset from all subsequent readings on all channels. The tare command is canceled by pressing CTRL+T.

MAX197 Evaluation Kit

_Detailed Description of Hardware

Driving the Analog Inputs

Select an op amp based on its settling time. A fast settling time is more important than a fast slew rate. Sites U3 and U4 on the EV kit are industry-standard quad op-amp pinouts in the voltage-follower configuration. When using a slow op amp, extend the acquisition time by using the "A" command in the control panel. The 68HC16 software allows acquisition times between 68 μ s and 6000 μ s. The 80C32 software allows acquisition times between 12 μ s and 560 μ s. A value of 0 disables the delay.

For high sampling rates, a fast settling op amp such as Maxim's MXL1014 performs quite well. Refer to the *Typical Timing Characteristics* to see the relationship between the value selected and the corresponding external acquisition delay. For lower sampling rates, any quad 741 type op amp should be adequate. The LM348 is an inexpensive solution. For +5V single-supply systems, the MAX414 is recommended.

Changing the Reference Voltage

The MAX197 can use either its internal reference or an external reference. On the EV kit, the internal reference has been disabled by pulling the REFADJ pin up to +5V (JU1) and driving the REF pin with a MAX874 4.096V reference (JU2).

When driving the REF pin with an external reference, install a shunt at JU1 and place JU2 in the 1-2 position. When driving the REFADJ pin with an external reference, leave jumper JU1 open and place JU2 in the 2-3 position.

For lowest component count, the MAX197's internal reference can be enabled by removing the shunts from JU1 and JU2. This enables the internal bandgap reference and the reference buffer, driving REF internally to 4.096V. For best results, install a 0.01 μ F ceramic bypass capacitor near the REFADJ pin (C7 on the EV kit).

The MAX197 EV kit software assumes a 4.096V reference voltage, unless otherwise specified. When using other reference values, the reference value must be specified when starting the program. For example, if the REFADJ pin is driven by a 2.048V reference, start the MAX197 software by typing:

```
MAX197 REFADJ 2.048
```

Or, if the REFADJ pin is pulled high and REF is driven by a 3.00V reference, start the MAX197 software by typing:

```
MAX197 REF 3.00
```

Using an External Clock

Cut JU4 open. From the control panel, press F8 to select external clock mode. Apply the external clock to the EXTCLK input pad.

Evaluating the MAX199

To evaluate the MAX199 using the MAX197 EV kit, replace U1 with a MAX199. Then, at the DOS prompt, start the MAX197 software by typing:

```
MAX197 199
```

If the voltage reference is different than the default 4.096V, the MAX197 EV kit software should be informed. For example, if the REFADJ pin is driven by a 2.048V reference, start the MAX197 software by typing:

```
MAX197 199 REFADJ 2.048
```

Or, if the REFADJ pin is pulled high and REF is driven by a 3.00V reference, start the MAX197 software by typing:

```
MAX197 199 REF 3.00
```

Refer to the *Changing the Reference Voltage* section for an explanation of how REF and REFADJ interact.

MAX197 Evaluation Kit

Evaluates: MAX197/MAX199

Table 1. MAX197 EV Kit Commands

KEY	FUNCTION
F1	Choose input scale (bipolar 10V, unipolar 10V, bipolar 5V, unipolar 5V). The currently active scale is shown underneath the bar-graph display.
0-7	Enable or disable the corresponding input channel 0, 1, 2, 3, 4, 5, 6, or 7. The EV kit software scans all selected channels.
C	Display the input codes in decimal.
V	Display the input voltages.
D	Delay between samples. Delays longer than one second are handled by the IBM PC; otherwise, the μ C module handles the delay. Timing is approximate and should be verified with an oscilloscope.
↑, ↓	Select standby, fast power-down, SHDN power-down, or no power-down.
P	Power-up delay. Timing is approximate and should be verified with an oscilloscope. Power-up delay is used regardless of which power-cycling mode is selected. In standby mode, power-up delay is not necessary and should be set to zero.
A	External acquisition time for use with slow op amps. Timing is approximate and should be verified with an oscilloscope. The MAX197 is placed in standby mode during acquisition time.
F7	Internal clock mode. Timing is controlled by capacitor C11. JU4 should be closed when using this mode.
F8	External clock mode. Clock must be provided at EXTCLK input pad. JU4 should be cut apart when using this mode.
O	Oscilloscope demo. Samples are collected and discarded as fast as possible. Observe waveforms and timing with an oscilloscope.
S	Sample one of the eight inputs at high speed and upload to a user-specified file. The sampling rate is controlled by the P, A, and D delays. Due to program overhead, the O and S commands operate at different rates. Timing should be verified with an oscilloscope.
T	Tare (offset voltage null). Assumes that channel 0 is connected to AGND. Measures the code at channel 0 and subtracts that value from all subsequent readings.
CTRL+T	Cancel the Tare (T) function.
L	Enable or disable data logging. If the -L command line option is not specified, the L command prompts for a log file name.
F3	Write a marker into the data log file. (See <i>the Low-Speed Data Logging</i> section.)
ALT+T	Switch back to terminal mode.
ALT+X	Exit to DOS.

MAX197 Evaluation Kit

Evaluates: MAX197/MAX199

Table 2. Command-Line Options when Starting MAX197 Software

COMMAND	FUNCTION
1	Default to COM1 part of the PC.
2	Default to COM2 part of the PC.
MONO	For use with monochrome or LCD display.
-L <i>filename</i>	Open file " <i>filename</i> " for data logging, and enable the data-logging commands.
REF <i>v</i> v	Specify the voltage at the REF pin (nominally 4.096V). Note that REF is an input or an output, depending on the state of the REFADJ pin. Refer to the MAX197 data sheet.
REFADJ <i>v</i> v	Specify the voltage at the REFADJ pin (nominally 2.5V).
199	Interprets the output codes for a MAX199 instead of a MAX197. Refer to the MAX199 data sheet.

Table 3. Jumper Settings on MAX197 EV Kit

JUMPER	STATE	FUNCTION
JU1	closed	(Default) Disable internal bandgap reference; REF pin is an input.
	open	Enable internal bandgap reference; REF pin is 4.096V output.
JU2	1-2	(Default) Connects external 4.096V reference (MAX874) to REF pin; JU1 must be closed.
	2-3	Connects external reference to REFADJ pin.
	open	REF = 4.096V output and REFADJ = 2.5V output (internal reference)
JU3	closed	(Default Trace) Current-sense jumper. The MAX197 draws its +5V supply through this trace.
	open	Do not operate kit with JU3 open.
JU4	closed	(Default Trace) Use C11 as the timing capacitor for the MAX197 internal clock mode.
	open	Use the EXTCLK input pad as clock input.

MAX197 Evaluation Kit

Evaluates: MAX197/MAX199

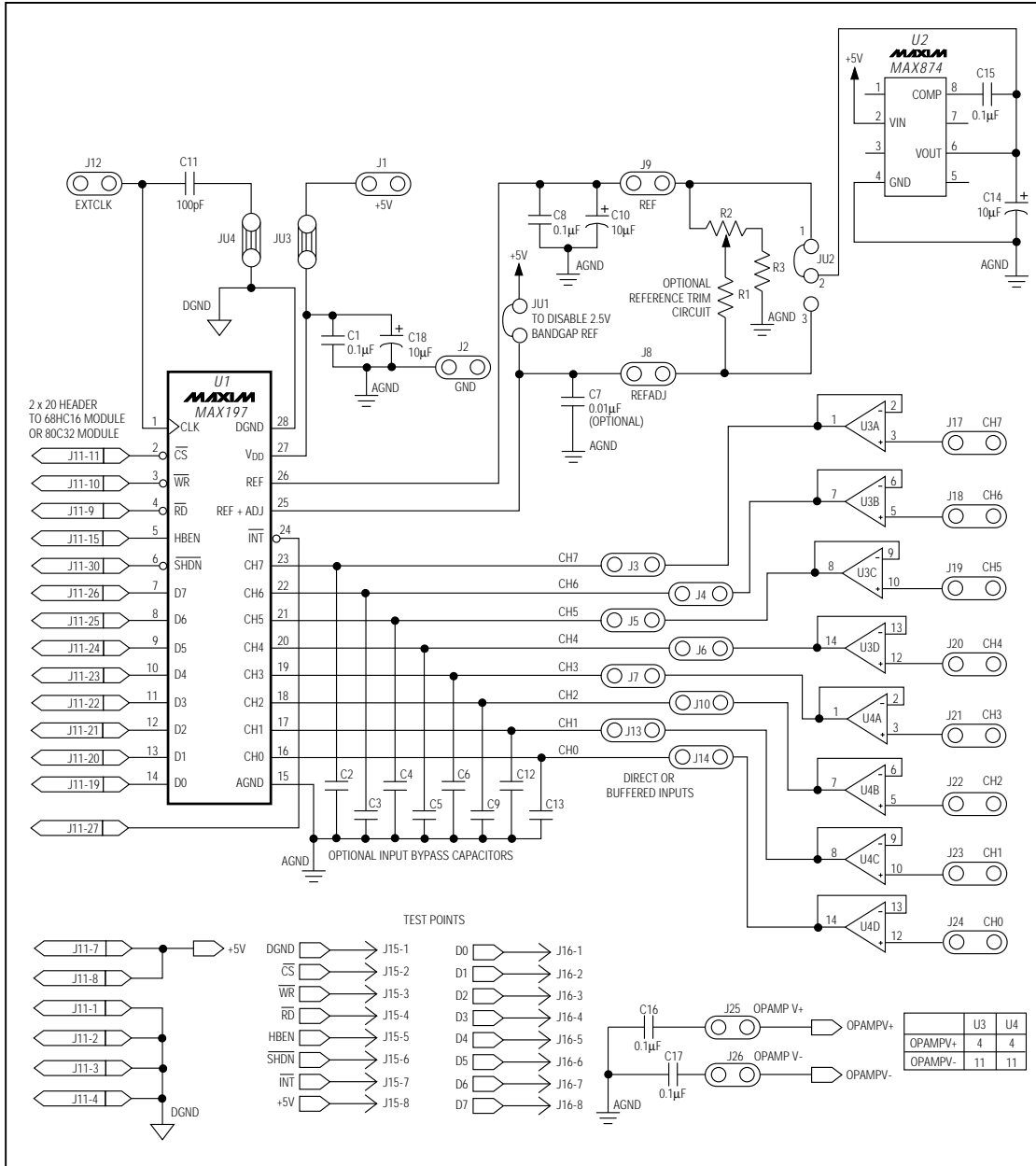


Figure 1. MAX197 EV Kit Schematic

MAX197 Evaluation Kit

Evaluates: MAX197/MAX199

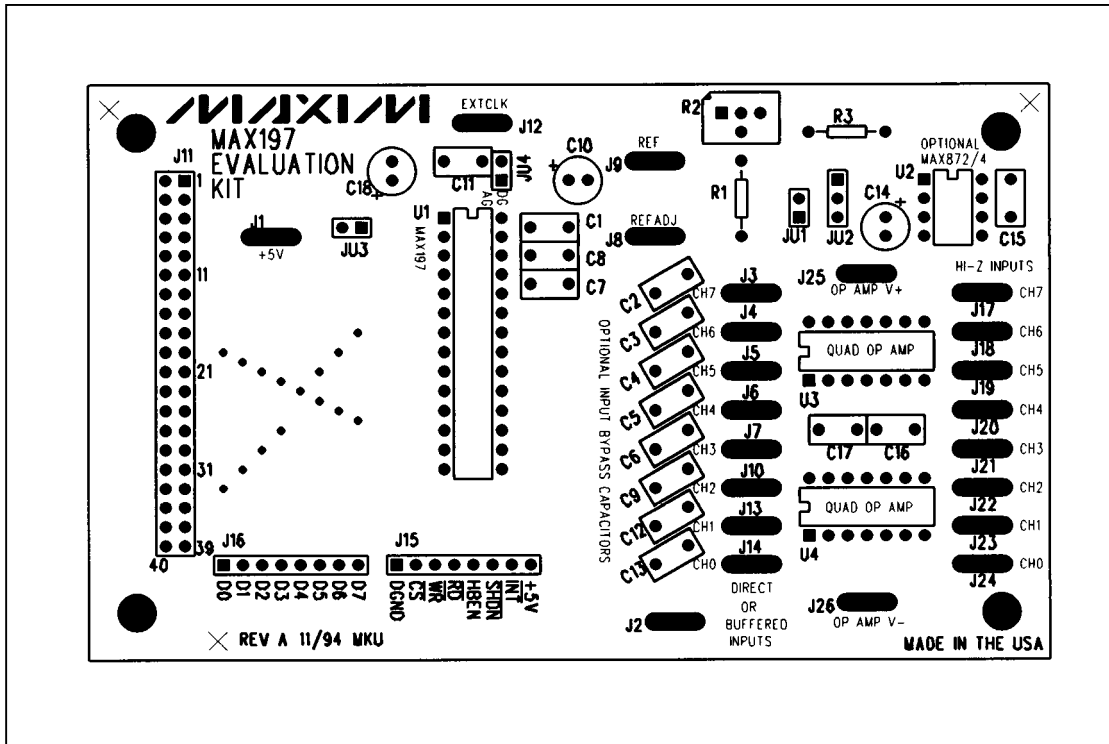


Figure 2. MAX197 EV Kit Component Placement Guide

MAX197 Evaluation Kit

Evaluates: MAX197/MAX199

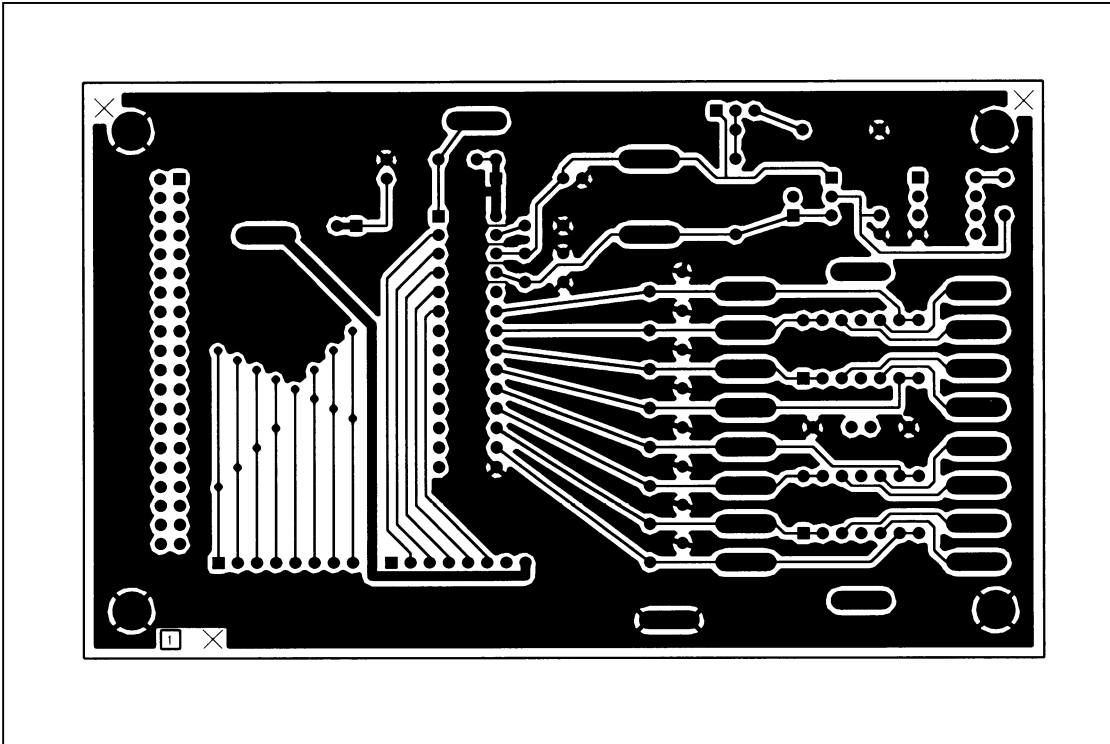


Figure 3. MAX197 EV Kit PC Board Layout—Component Side

MAX197 Evaluation Kit

Evaluates: MAX197/MAX199

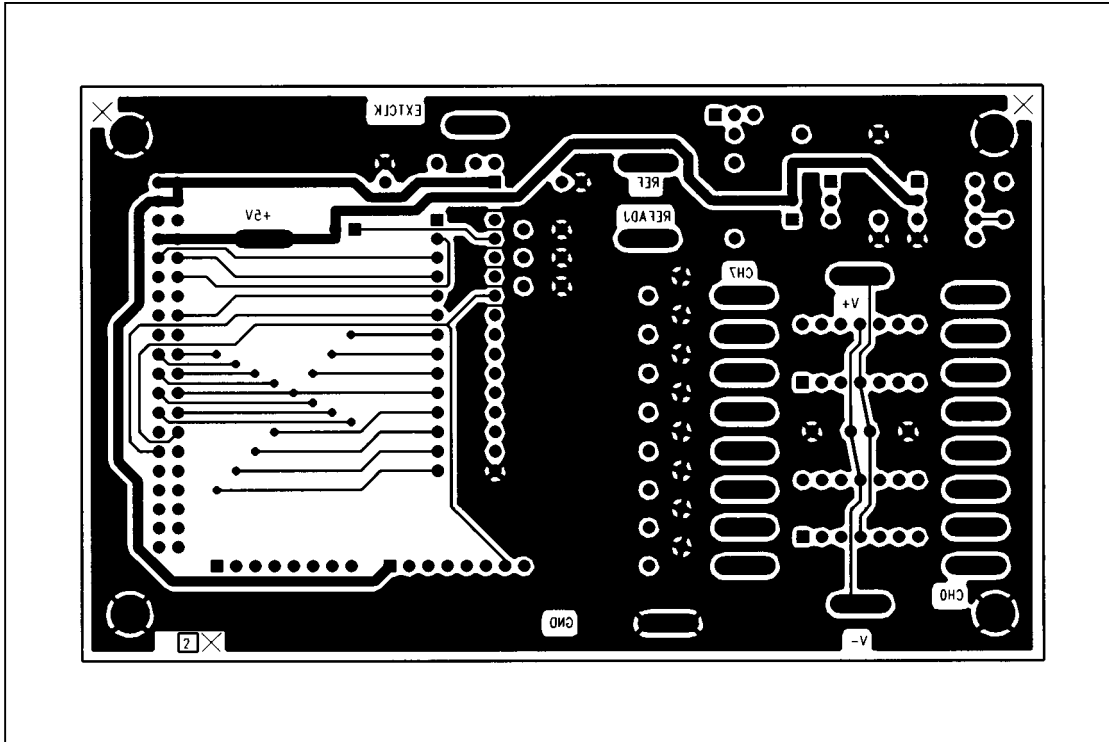


Figure 4. MAX197 EV Kit PC Board Layout—Solder Side

X-ON Electronics

Largest Supplier of Electrical and Electronic Components

Click to view similar products for [Analog to Digital Converters - ADC category](#):

Click to view products by [Maxim manufacturer](#):

Other Similar products are found below :

[ADC0804LCD](#) [ADC0808](#) [MCP37211-200I/TE](#) [MAX15511TGTL+](#) [MCP3202T-CI/MS](#) [ADE1201ACCZ](#) [ADE1202ACCZ](#) [LTC1090CN](#)
[LTC1605IG](#) [LTC2238IUH](#) [LTC1418AIG](#) [LTC1605ACG](#) [LTC1605AIG](#) [LTC2208IUP](#) [ADS1282HPW](#) [LTC1297DCN8](#) [LTC1741CFW](#)
[MCP3422A0-E/MS](#) [MCP3426A2-E/MC](#) [MCP3426A3-E/MC](#) [MCP3427-E/MF](#) [TLC0820ACN](#) [TLC2543IN](#) [TLV2543IDW](#)
[NCD9830DBR2G](#) [ADS5231IPAG](#) [ADS7807U](#) [ADS7891IPFBT](#) [ADS8328IBPW](#) [AMC1204BDWR](#) [ADS7959QDBTRQ1](#)
[ADS7955QDBTRQ1](#) [ADS7807UB](#) [ADS7805UB](#) [ADS1220IPWR](#) [MCP3426A0-E/MS](#) [MCP3422A0-E/MC](#) [AD9220AR](#) [MAX11212AEUB+](#)
[TLV1570CDW](#) [TLC3574IDWR](#) [TLC1542IDWR](#) [TLC0838CDWR](#) [AD7914BRUZ-REEL7](#) [AD977ABRZ](#) [ADC12130CIWM/NOPB](#)
[MCP3426A1-EMC](#) [MCP3426A0-EMC](#) [AD7192BRUZ-REEL](#) [AD7193BRUZ-REEL](#)