

## GENERAL DESCRIPTION

The SPX2940 is a 1A, accurate voltage regulators with a low drop out voltage of 280mV (typical) at 1A.

These regulators are specifically designed for low voltage applications that require a low dropout voltage and a fast transient response. They are fully fault protected against over-current, reverse battery, and positive and negative voltage transients.

The SPX2940 is offered in 3-pin TO-220 & TO-263 packages. For a 3A version, refer to the SPX29300 data sheet.

## APPLICATIONS

- Power Supplies
- LCD Monitors
- Portable Instrumentation
- Medical and Industrial Equipments

## FEATURES

- Guaranteed 1.5A Peak Current
- Low Quiescent Current
- Low Dropout Voltage of 280mV at 1A
- Extremely Tight Load and Line Regulation
- Extremely Fast Transient Response
- Reverse-battery Protection
- Internal Thermal Protection
- Internal Short Circuit Current Limit
- Replacement for LM2940, MIC2940A, AS2940
- Standard TO-220 and TO-263 packages

## TYPICAL APPLICATION DIAGRAM

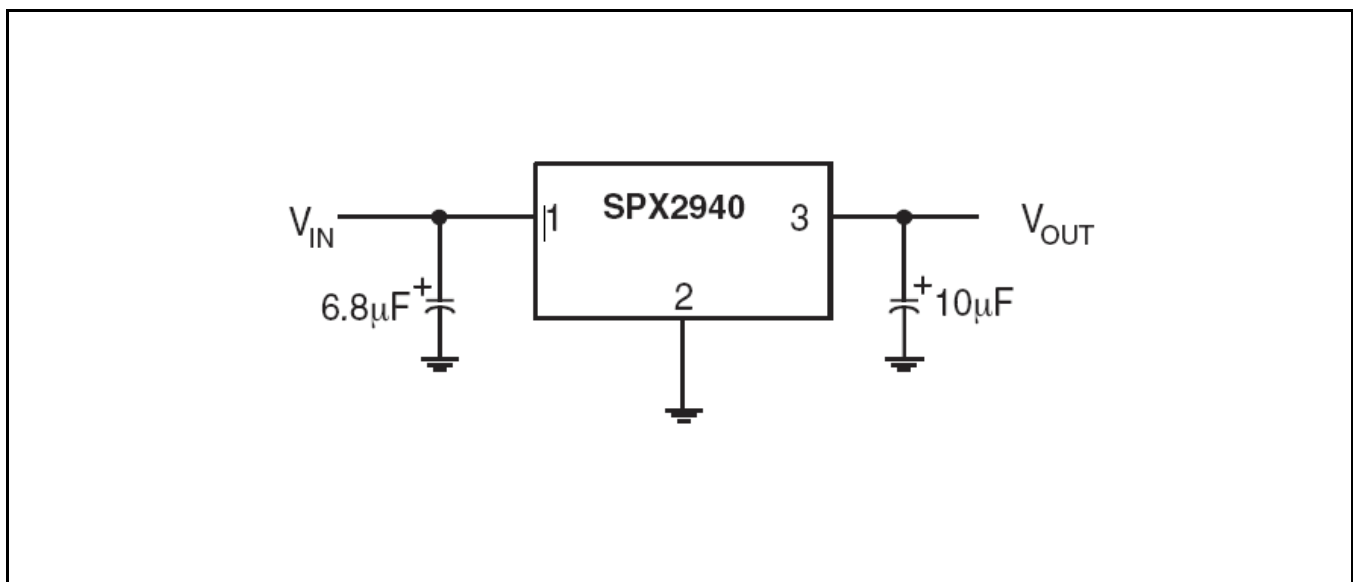


Fig. 1: SPX2940 Application Diagram – Fixed Output Linear Regulator



**ABSOLUTE MAXIMUM RATINGS**

These are stress ratings only and functional operation of the device at these ratings or any other above those indicated in the operation sections of the specifications below is not implied. Exposure to absolute maximum rating conditions for extended periods of time may affect reliability.

Input Voltage  $V_{IN}$  ..... 16V<sup>1</sup>  
 Storage Temperature ..... -65°C to 150°C  
 Lead Temperature (Soldering, 5 sec) ..... 260°C

**OPERATING RATINGS**

Junction Temperature Range ..... -40°C to 125°C  
 TO-220 Package  
 Thermal Resistance, Junction to Case (at  $T_A$ ) ..... 4°C/W  
 TO-263 Package  
 Thermal Resistance, Junction to Case (at  $T_A$ ) ..... 4°C/W

Note 1: Maximum positive supply voltage of 20V must be of limited duration (<100ms) and duty cycle (<1%). The maximum continuous supply voltage is 16V.

**ELECTRICAL SPECIFICATIONS**

Specifications with standard type are for an Operating Ambient Temperature of  $T_A = 25^\circ\text{C}$  only; limits applying over the full Operating Junction Temperature range are denoted by a “•”. Minimum and Maximum limits are guaranteed through test, design, or statistical correlation. Typical values represent the most likely parametric norm at  $T_A = 25^\circ\text{C}$ , and are provided for reference purposes only. Unless otherwise indicated,  $V_{IN} = V_{IN} + 1V$ ,  $I_{OUT} = 10\text{mA}$ ,  $C_{IN} = 6.8\mu\text{F}$ ,  $C_{OUT} = 10\mu\text{F}$ ,  $T_A = 25^\circ\text{C}$ .

Parameter	Min.	Typ.	Max.	Units	Conditions
<b>5.0V version</b>					
Output Voltage	4.850	5.0	5.150	V	$I_{OUT} = 10\text{mA}$ • $10\text{mA} \leq I_{OUT} \leq 1\text{A}$ , $6V \leq V_{IN} \leq 16V$
	4.750	5.0	5.250	V	
Line Regulation		0.2	1.0	%	$I_{OUT} = 10\text{mA}$ , $(V_{OUT} + 1V) \leq V_{IN} \leq 16V$
Load Regulation		0.3	1.5	%	$V_{IN} = V_{OUT} + 1V$ , $10\text{mA} \leq I_{OUT} \leq 1\text{A}$
$\frac{\Delta V}{\Delta T}$ - Output Voltage temperature Coefficient		20	100	ppm/°C	•
Dropout Voltage <sup>2</sup> (except 1.8V version)		70	200	mV	• $I_{OUT} = 100\text{mA}$
		280	550	mV	• $I_{OUT} = 1\text{A}$
Ground Current <sup>3</sup>		12	25	mA	• $I_{OUT} = 750\text{mA}$ , $V_{IN} = V_{OUT} + 1V$
		18		mA	$I_{OUT} = 1\text{A}$
$I_{GNDDO}$ Ground Pin Current at Dropout		1.2		mA	$V_{IN} = 0.1V$ less than specified $V_{OUT}$ $I_{OUT} = 10\text{mA}$
Current Limit		1.5	2.2	A	$V_{OUT} = 0V^4$
Output Noise Voltage		400		$\mu\text{V}_{RMS}$	10Hz-100KHz, $I_L = 100\text{mA}$ , $C_L = 10\mu\text{F}$
		260		$\mu\text{V}_{RMS}$	10Hz-100KHz, $I_L = 100\text{mA}$ , $C_L = 33\mu\text{F}$

Note 2: Dropout voltage is defined as the input to output differential when the output voltage drops to 99% of its normal value.

Note 3: Ground pin current is the regulator quiescent current. The total current drawn from the source is the sum of the load current to the ground current.

Note 4:  $V_{IN} = V_{OUT(NOMINAL)} + 1V$ . For example, use  $V_{IN} = 4.3V$  for a 3.3V regulator. Employ pulse-testing procedures to minimize temperature rise.

### BLOCK DIAGRAM

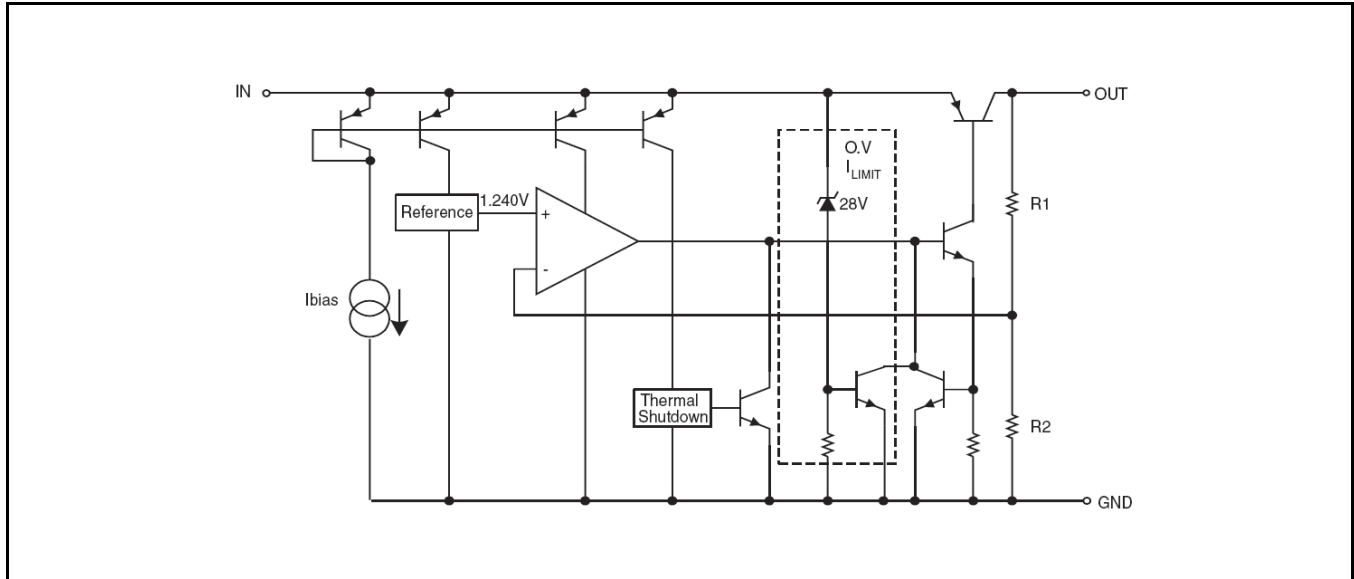


Fig. 2: SPX2940 Block Diagram

### PIN ASSIGNMENT

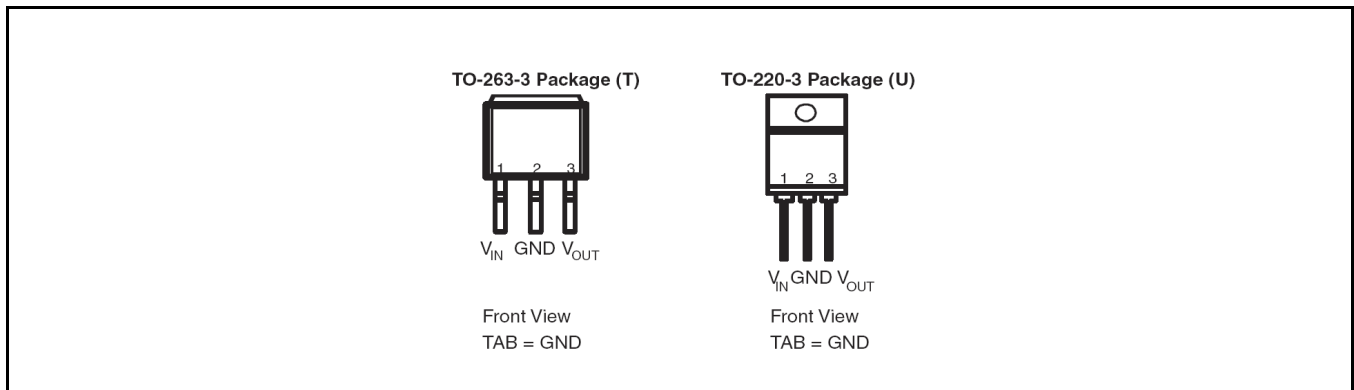


Fig. 3: SPX2940 Pin Assignment

### ORDERING INFORMATION

Part Number	Temperature Range	Marking	Package	Packing Quantity	Note 1	Note 2
SPX2940T-L-5-0/TR	$-40^{\circ}\text{C} \leq T_J \leq +125^{\circ}\text{C}$	SPX2940T 50YYWWLX	3-pin TO-263	500/Tape & Reel	Lead Free	5.0V Output Voltage
SPX2940U-L-5-0	$-40^{\circ}\text{C} \leq T_J \leq +125^{\circ}\text{C}$	SPX2940U 50YYWWLX	3-pin TO-220	Bulk	Lead Free	5.0V Output Voltage

"YY" = Year – "WW" = Work Week – "X" = Lot Number

TYPICAL PERFORMANCE CHARACTERISTICS

Schematic and BOM from Application Information section of this datasheet.

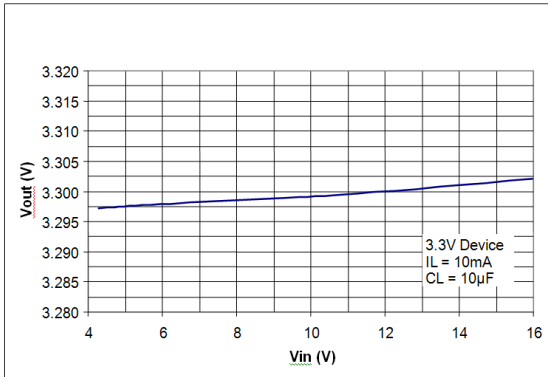


Fig. 4: Line Regulation

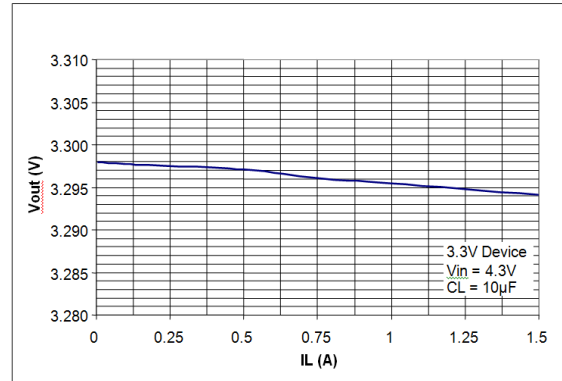


Fig. 5: Load Regulation

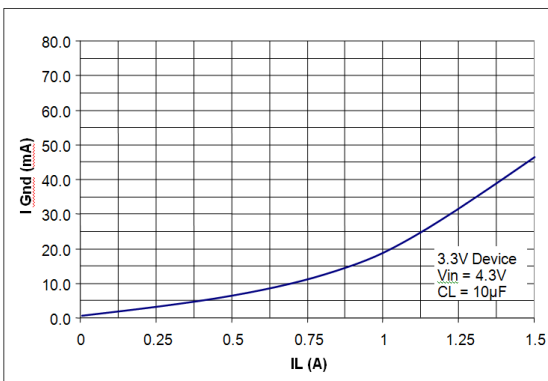


Fig. 6: Ground Current vs Load Current

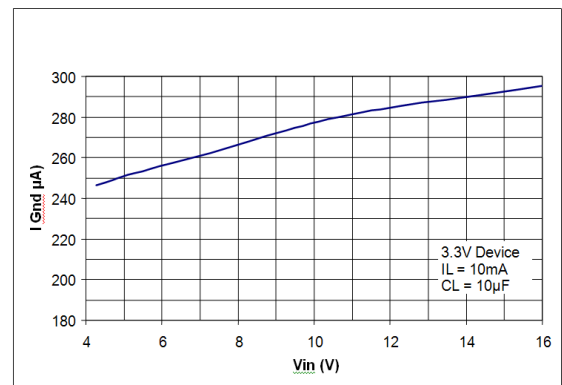


Fig. 7: Ground Current vs Input Voltage

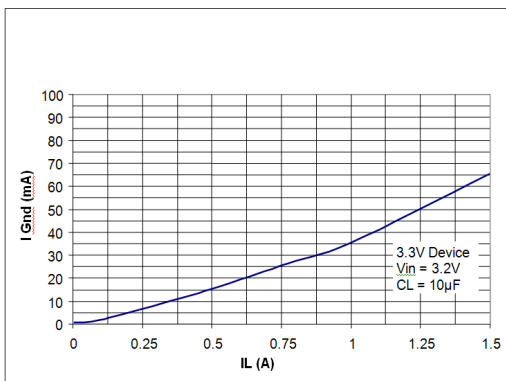


Fig. 8: Ground Current vs Current in Dropout

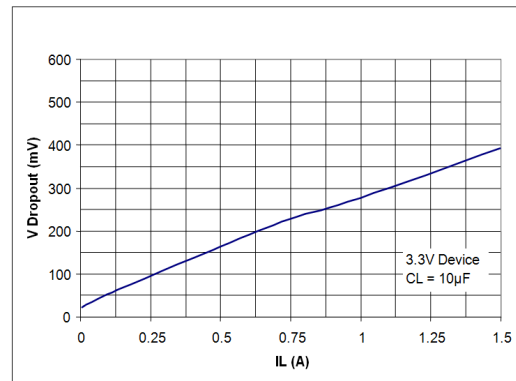


Fig. 9: Dropout Voltage vs Load Current

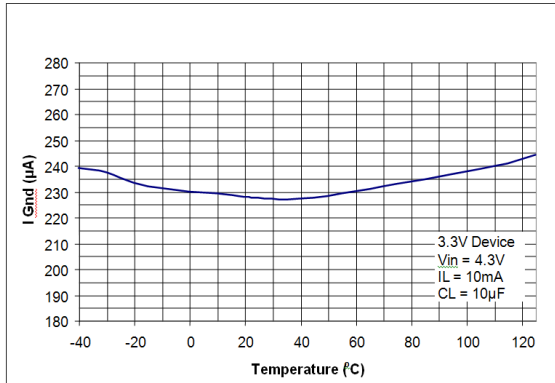


Fig. 10: Ground Current vs Temperature  
 $I_{LOAD} = 100mA$

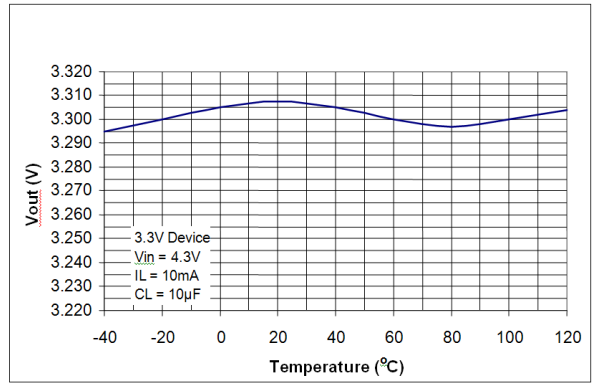


Fig. 11: Output Voltage vs Temperature  
 $I_{LOAD} = 100mA$

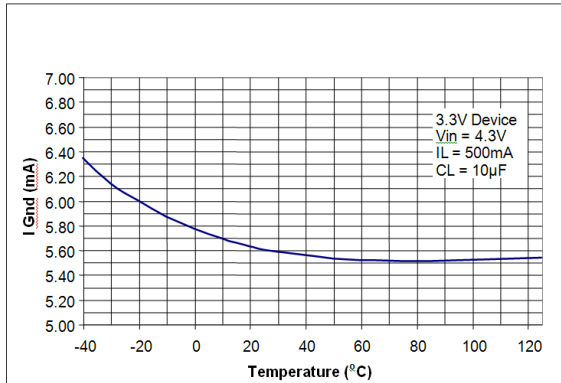


Fig. 12: Ground Current vs Temperature  
 $I_{LOAD} = 500mA$

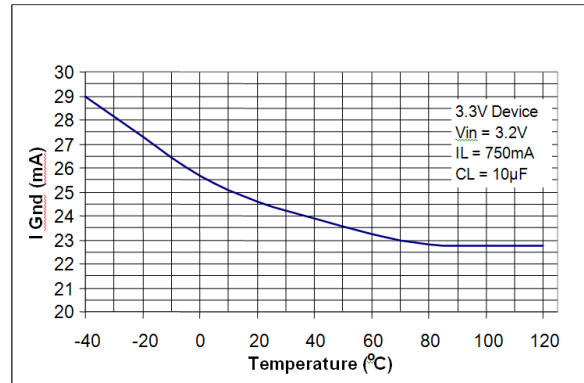


Fig. 13: Ground Current vs Temperature Dropout,  $I_{LOAD} = 750mA$

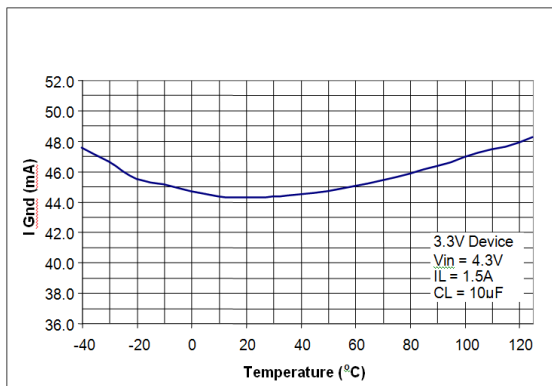


Fig. 14: Ground Current vs Temperature  
 $I_{LOAD} = 1.5A$

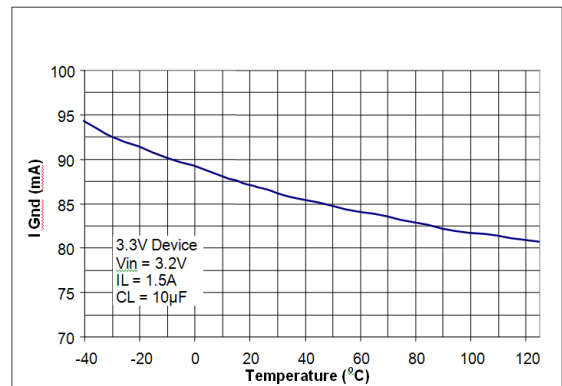


Fig. 15: Ground Current vs Temperature Dropout,  $I_{LOAD} = 1.5A$

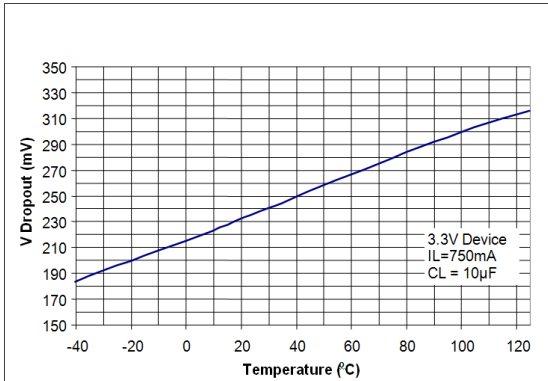


Fig. 16: Dropout Voltage vs Temperature  
 $I_{LOAD} = 750\text{mA}$

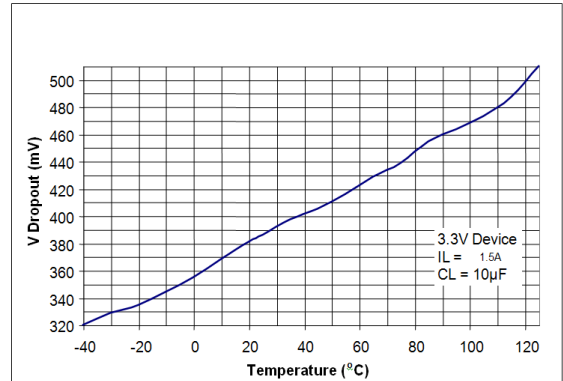


Fig. 17: Dropout Voltage vs Temperature  
 $I_{LOAD} = 1.5\text{A}$

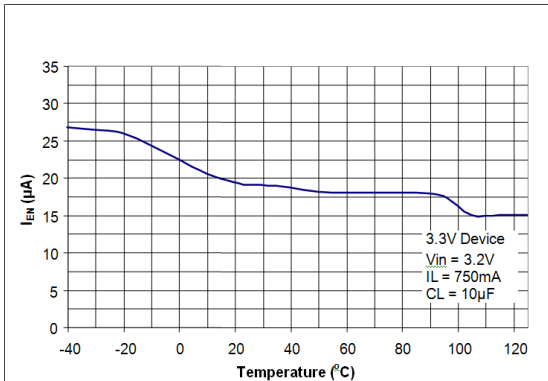


Fig. 18: Enable Current vs Temperature  
 $V_{EN} = 16\text{V}$

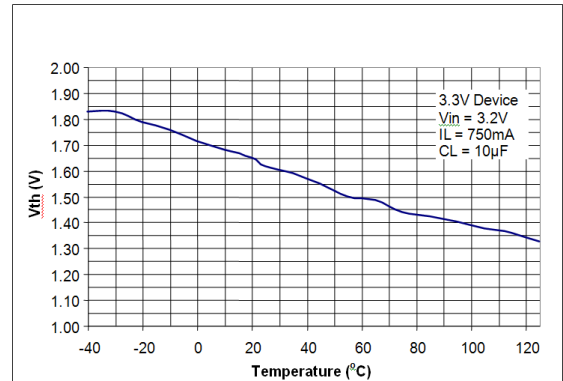


Fig. 19: Enable Threshold vs Temperature

**THEORY OF OPERATION**

The SPX2940 incorporates protection against over-current faults, reversed load insertion, over temperature operation, and positive and negative transient voltage.

**THERMAL CONSIDERATIONS**

Although the SPX2940 offers limiting circuitry for overload conditions, it is still necessary to insure that the maximum junction temperature is not exceeded in the application. Heat will flow through the lowest resistance path, the junction-to-case path. In order to insure the best thermal flow of the component, proper mounting is required. Since the case of the device is electrically connected to the output, the case must be electrically isolated using a thermally conductive spacer, which itself contributes some small additional thermal resistance. Consult heatsink manufacturer for thermal resistance and design of heatsink.

**TO-220 Design Example:**

Assume that  $V_{IN} = 10V$ ,  $V_{OUT} = 5V$ ,  $I_{OUT} = 1.5A$ ,  $T_A = 50^{\circ}C/W$ ,  $\theta_{HA} = 1^{\circ}C/W$ ,  $\theta_{CH} = 2^{\circ}C/W$ , and  $\theta_{JC} = 3^{\circ}C/W$ .

Where  $T_A$  = ambient temperature

$\theta_{HA}$  = heatsink to ambient thermal resistance

$\theta_{CH}$  = case to heatsink thermal resistance

$\theta_{JC}$  = junction to case thermal resistance

The power calculated under these conditions is:

$$P_D = (V_{IN} - V_{OUT}) * I_{OUT} = 7.5W.$$

And the junction temperature is calculated as

$$T_J = T_A + P_D * (\theta_{HA} + \theta_{CH} + \theta_{JC}) \text{ or}$$

$$T_J = 50 + 7.5 * (1 + 2 + 3) = 95^{\circ}C$$

Reliable operation is insured.

**CAPACITOR REQUIREMENTS**

The output capacitor is needed to insure stability and minimize the output noise. The value of the capacitor varies with the load. However, a minimum value of 10 $\mu$ F aluminum capacitor will guarantee stability over all load conditions. A tantalum capacitor is

recommended if a faster load transient response is needed.

If the power source has a high AC impedance, a 0.1 $\mu$ F ceramic capacitor between input & ground is recommended.

**MINIMUM LOAD CURRENT**

To ensure a proper behavior of the regulator under light load, a minimum load of 5mA for SPX2940 is required.

consequat eu, consequat eu, ullamcorper pretium, magna. Aenean varius turpis sed metus. Donec erat. Nunc urna pede, accumsan sed, tristique non, lobortis sit amet, pede.

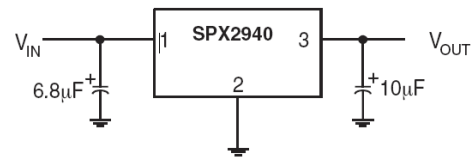


Fig. 20: Fixed Output Linear Regulator

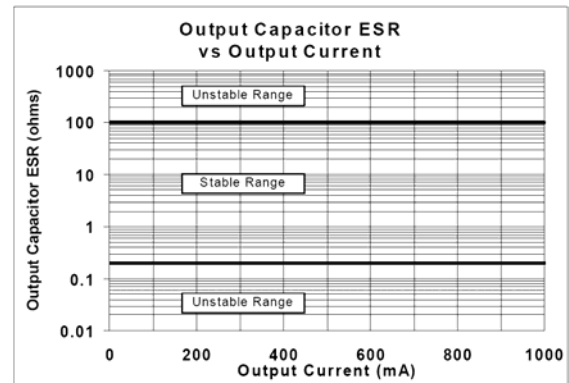


Fig. 21: Ouput Cap ESR vs I<sub>OUT</sub>

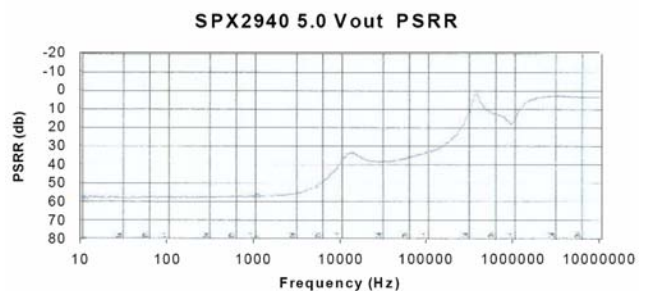
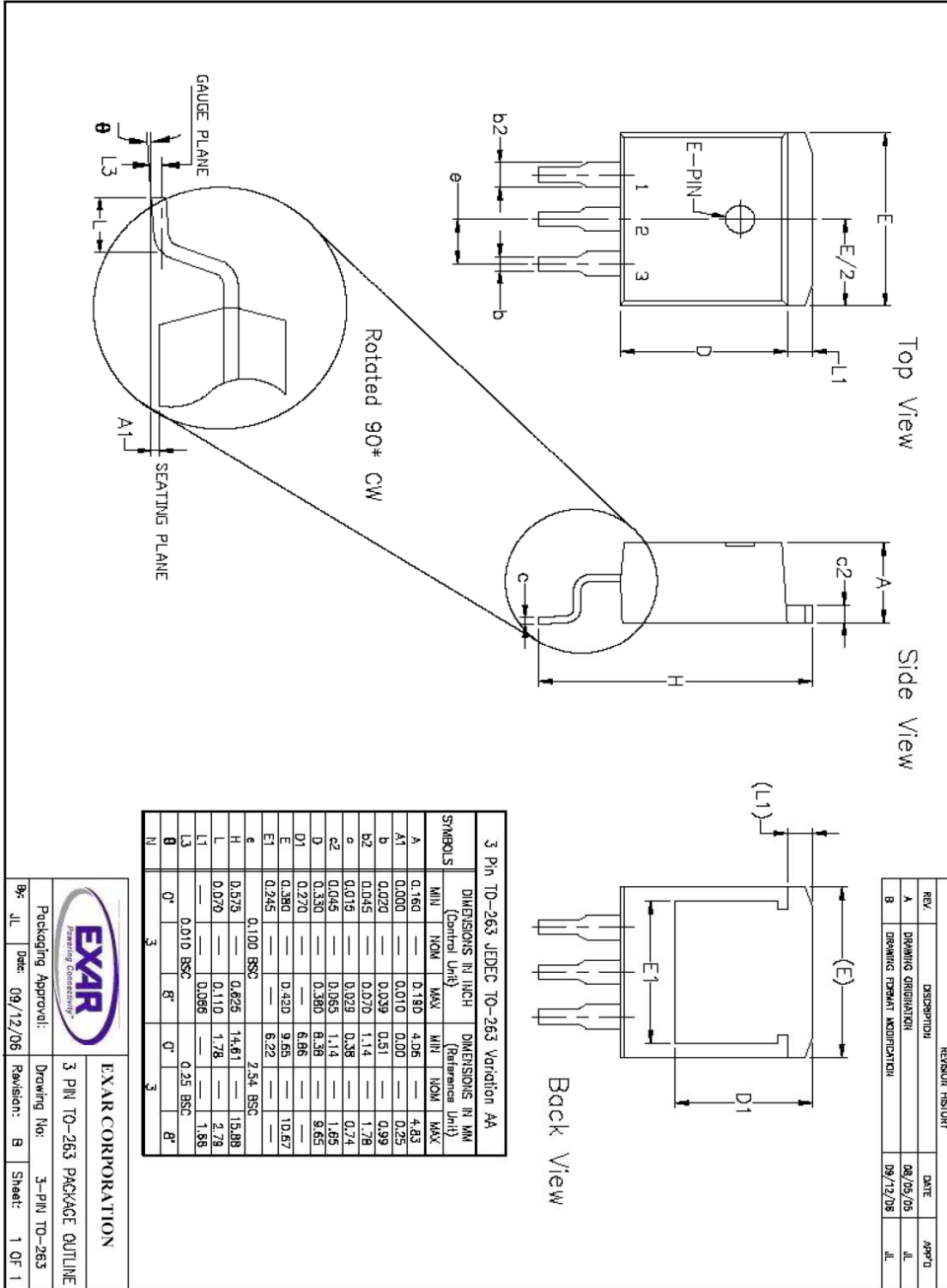


Fig. 22: 5.0V<sub>OUT</sub> PSRR  $V_{IN}=10V$ ,  $V_{OUT}=5V$   
 $C_{OUT}=22F$ ,  $I_{OUT}=10mA$

PACKAGE SPECIFICATION

3-PIN TO-263



3 Pin TO-263 JEDEC TO-263 Variation AA		DIMENSIONS IN INCH (Control Unit)		DIMENSIONS IN MM (Reference Unit)	
SYMBOLS	MIN	MAX	MIN	MAX	MIN
A	0.160	0.180	4.06	4.63	—
A1	0.000	0.010	0.00	0.25	—
b	0.020	0.039	0.51	0.99	—
b2	0.045	0.070	1.14	1.78	—
c	0.015	0.029	0.38	0.74	—
c2	0.045	0.065	1.14	1.65	—
D	0.330	0.380	8.38	9.65	—
D1	0.270	—	6.86	—	—
E	0.380	0.420	9.65	10.67	—
E1	0.245	—	6.22	—	—
e	0.100 RSC	—	2.54 RSC	—	—
H	0.575	0.625	14.61	15.88	—
L1	0.070	0.110	1.78	2.78	—
L3	—	0.066	—	1.68	—
θ	0°	0.010 RSC	0.25 RSC	—	—
N	3	3	3	3	—

REVISION HISTORY			
REV.	DESCRIPTION	DATE	APP'D
A	DRAWING ORIGINATOR	08/05/05	JL
B	DRAWING FOR PART MODIFICATION	09/12/06	JL

Packaging Approval: \_\_\_\_\_

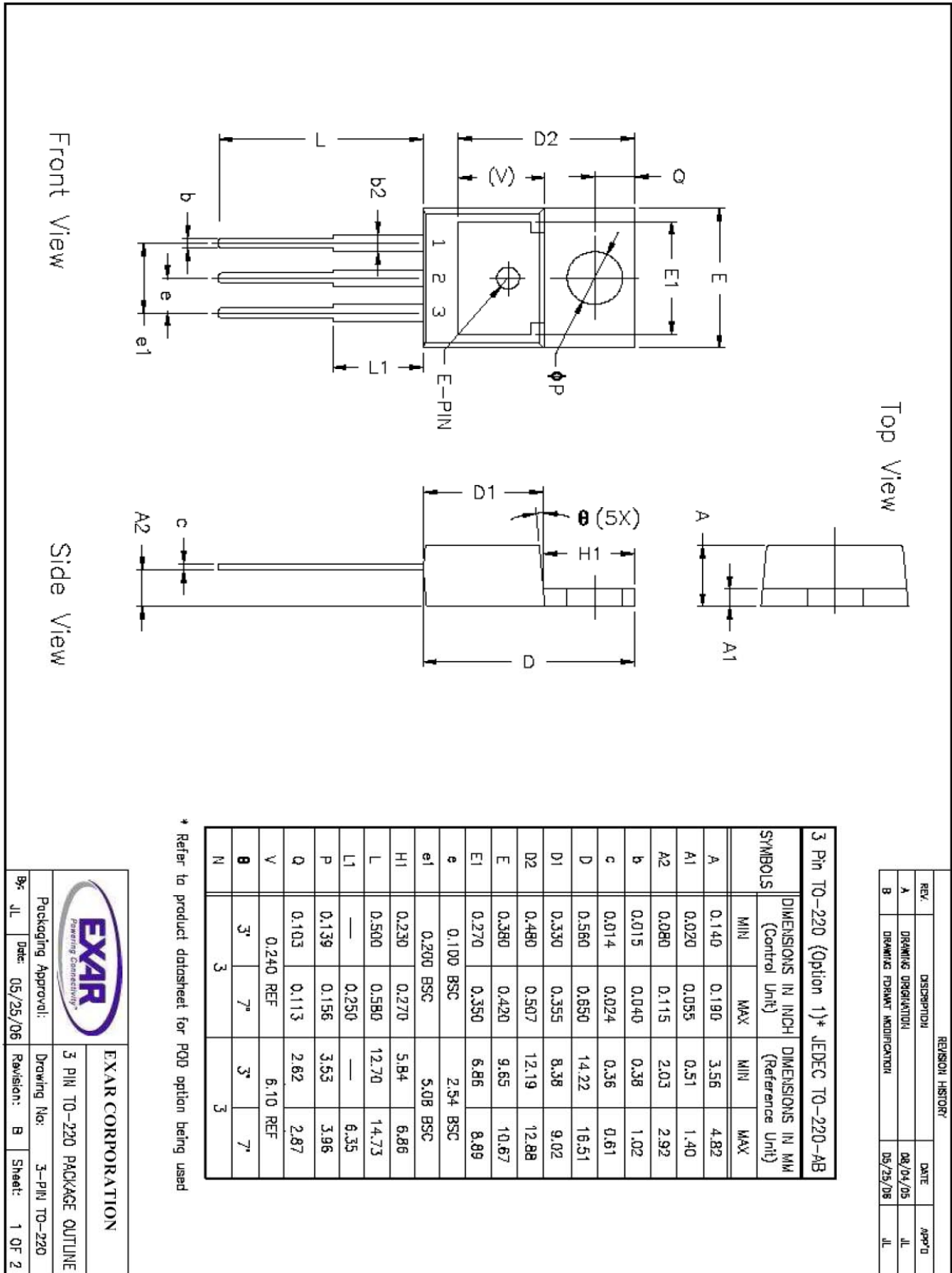
Drawing No: 3-PIN TO-263 OUTLINE

Revision: B Sheet: 1 OF 1

EXAR CORPORATION



3-PIN TO-220





**REVISION HISTORY**

Revision	Date	Description
F	11/03/2007	
2.0.0	08/06/2009	Reformat of Datasheet Updated $\theta_{JC}$ values

**FOR FURTHER ASSISTANCE**

Email:

customersupport@exar.com

Exar Technical Documentation:

<http://www.exar.com/TechDoc/default.aspx?>



**EXAR CORPORATION**

**HEADQUARTERS AND SALES OFFICES**

48720 Kato Road

Fremont, CA 94538 – USA

Tel.: +1 (510) 668-7000

Fax: +1 (510) 668-7030

[www.exar.com](http://www.exar.com)

**NOTICE**

EXAR Corporation reserves the right to make changes to the products contained in this publication in order to improve design, performance or reliability. EXAR Corporation assumes no responsibility for the use of any circuits described herein, conveys no license under any patent or other right, and makes no representation that the circuits are free of patent infringement. Charts and schedules contained here in are only for illustration purposes and may vary depending upon a user's specific application. While the information in this publication has been carefully checked; no responsibility, however, is assumed for inaccuracies.

EXAR Corporation does not recommend the use of any of its products in life support applications where the failure or malfunction of the product can reasonably be expected to cause failure of the life support system or to significantly affect its safety or effectiveness. Products are not authorized for use in such applications unless EXAR Corporation receives, in writing, assurances to its satisfaction that: (a) the risk of injury or damage has been minimized; (b) the user assumes all such risks; (c) potential liability of EXAR Corporation is adequately protected under the circumstances.

Reproduction, in part or whole, without the prior written consent of EXAR Corporation is prohibited.

## X-ON Electronics

Largest Supplier of Electrical and Electronic Components

*Click to view similar products for [LDO Voltage Controllers](#) category:*

*Click to view products by [MaxLinear](#) manufacturer:*

Other Similar products are found below :

[AS1360-18-T](#) [MIC5156-5.0YN](#) [MIC5191YML-T5](#) [MIC5191YMM](#) [LT3150CGN#PBF](#) [MAX1649CPA+](#) [MIC5158YM](#) [MIC5157YM](#)  
[MIC5158YM TR](#) [MAX8563EEE+](#) [MAX8564AEUB+](#) [MAX8564EUB+](#) [MIC5156YN](#) [MIC5158YN](#) [MIC5190YMM](#) [MIC5156-5.0YM](#)  
[MIC5156YM](#) [MIC5156-3.3YN](#) [MIC5157YN](#) [MIC5159-1.8YM6-TR](#) [MIC5159YM6 TR](#) [NCV33269DR2G](#) [MAX1651ESA+](#)  
[MAX1651CSA+](#) [MAX1649ESA+](#) [RN5RF33BA-TR-FE](#) [BD00IC0WEFJ-E2](#) [BD12IC0WEFJ-E2](#) [BD33GA3WEFJ-E2](#) [BD33IA5WEFJ-E2](#)  
[BD33IC0WEFJ-E2](#) [BD50GA3WEFJ-E2](#) [UC2834DW](#) [TLV717185PDQNR](#) [UC2832TDWEP](#) [UC2833DW](#) [UC2835D](#) [UC2836D](#) [UC3832DW](#)  
[UC3833DW](#) [UC3834DW](#) [UC3836D](#) [UCC2837D](#) [MIC5156-3.3YM](#) [UC2834DWG4](#) [UC2836DG4](#) [LFC789D25CDR](#)