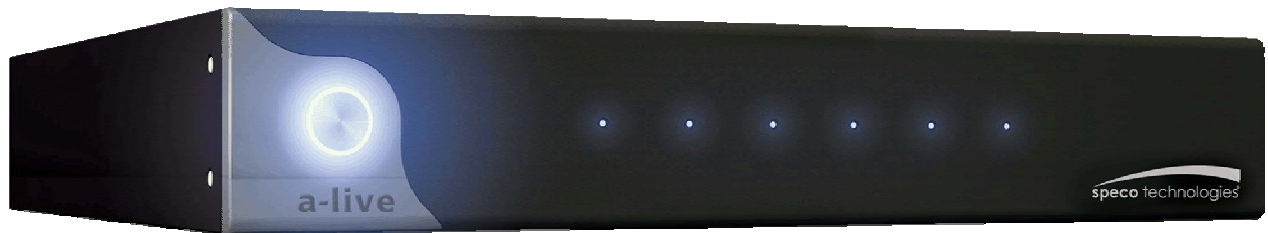




speco technologies®

a-live™

Multi-Room Audio System



Installation and Programming Manual

Speco Technologies
200 New Highway
Amityville, NY 11701
Phone 631.957.8700 • Toll Free 1.800.645.5516
www.specotech.com

WARNING: TO REDUCE THE RISK OF ELECTRICAL SHOCK OR FIRE, DO NOT EXPOSE THIS APPLIANCE TO RAIN OR MOISTURE.

CAUTION: TO REDUCE THE RISK OF ELECTRICAL SHOCK, DO NOT REMOVE COVER FOR ANY REASON. FOR SERVICE, REFER TO QUALIFIED SERVICE PERSONNEL.

If you have any questions please call Speco Technologies, Inc. at 1.800.645.5516 or 631.957.8700

Safety Instructions:

- 1) **Read these instructions** carefully before first operating the appliance.
- 2) **Retain these safety and operating instructions** for future reference.
- 3) **Heed all warnings** and adhere to all warnings on the appliance and in the operating instructions
- 4) Follow these operator and user instructions, as failure to do so could result in personal injury or damage to the appliance.
- 5) The appliance should not be used near water such as fountains, bathtubs, kitchen sinks or swimming pools.
- 6) The appliance should be situated so that the appliance receives proper ventilation. For example, the appliance should not be situated on a bed, sofa, rug, or similar surface that may block the ventilation openings, or placed in an enclosed installation, such as a bookcase or TV cabinet that may impede the flow of air through the ventilation openings. Never place any objects on top of the appliance as this may cause the unit to overheat.
- 7) The appliance should be situated away from heat sources such as vents, sunlight, radiators, stoves, or other appliances (including other amplifiers) that produce heat.
- 8) The appliance should be installed on a surface of sufficient strength to support the weight.
- 8) The appliance should be connected to a power supply only of the type described in the operating instructions or as marked on the appliance.
- 9) Precaution should be taken so that the grounding or polarization means of the appliance is not defeated.
- 10) Power supply cords should be installed so that they are not likely to be walked on or pressed upon by items placed on or against them, paying particular attention to cords at plugs, receptacles, and the point where they exit from the appliance.
- 11) The appliance surface should be cleaned only as recommended by the manufacturer.
- 12) When left unused for a long period of time, the power cord of the appliance should be unplugged from the outlet.
- 13) Take precautions that objects do not fall, and liquids are not spilled, into the appliance enclosure through any openings.
- 14) Third party carts and stands are used at the users own risk, and any movement combining such cart and the appliance should be done with care. Quick stops, excessive force and uneven surfaces may cause the appliance and cart combination to overturn.
- 15) It is not recommended to mount the appliance directly to a wall or ceiling.
- 16) The user should not attempt to service the appliance beyond the basic steps described in the operating instructions. All other servicing should be referred to qualified service personnel, such as when:
 - A) The power supply cord or the plug has been damaged; or
 - B) Objects have fallen, liquid has been spilled into the appliance; or
 - C) The appliance has been exposed to rain; or
 - D) The appliance does not appear to operate normally; or
 - E) The appliance has been dropped or the enclosure is damaged.

Precautions:

- 1) **WARNING: BEFORE TURNING ON THE POWER FOR THE FIRST TIME, READ THE FOLLOWING SECTION CAREFULLY.**
- 2) Do not handle the unit or power cord with wet or damp hands or while holding a beverage. If water or any other liquid enters the cabinet, unplug the unit from power immediately and take it to a qualified service person for inspection.
- 3) Place the unit in a well-ventilated location. Take special care to provide plenty of ventilation on all sides of the unit especially when it is placed in an audio rack. If ventilation is blocked, the unit may overheat and malfunction. Do not stack anything directly over or against the ventilation openings. Do not expose the unit to direct sun light or heating units as the unit internal components temperature may rise and shorten the life of the components. Avoid damp and dusty places.
- 4) From time to time you should wipe off the front and side panels of the cabinet with a soft cloth. Do not use rough material, thinners, alcohol or other chemical solvents or cloths since this may damage the finish or remove the panel lettering.

Table of Contents

System Overview.....	6
Features & Functions	6
System Requirements	6
Getting Started	6
Basic System Setup	7
Rear Panel	7
Auxiliary Sources.....	8
Playlist Formats	8
Residential (8 Ω) Speaker Wiring	9
Commercial (70/25V) Speaker Wiring	10
Keypad Wiring	11
Network Wiring	11
How to Make a Playlist	12
iTunes Playlist	12
Windows Media Player Playlist.....	12
Manager Software	12
Manager Installation	12
Password Creation & Auto Login.....	12
Upgrading the a-live Manager Software	13
Unit Selection	14
Version	14
Server Settings (Name and IP Address).....	15
Editing a List (Master Source & Sources By Zone)	16
Playing a Source	20
Keypad Icon Definitions.....	21
Keypad Menu Tree	22
Setting the IP Address.....	23
Additional Keypad Features	23
Controlling AUX Sources via IR Pass Through on Keypads.....	24
Technical Specifications	25
Troubleshooting.....	26
Warranty and Repair	27

System Overview

We greatly appreciate your choice of Speco Technologies® **a-live** as your multiroom audio distribution system. **a-live** is a great choice for those who want to make the most of digital music collections, while simultaneously having the utmost ease in distributing audio throughout a home or business.

Features & Functions

- Easily distribute up to 6 analog sources and multiple digital music playlists into up to 6 zones per unit
- Residentially focused (8 Ω A6X6A8) or commercially focused (70/25 Volt A6X6A70) models available
- System setup is a snap with intuitive GUI that also functions as a master control for unit

System Requirements

Operating System: Windows XP SP2 or Vista

Minimum CPU for up to 4-zone digital playback: Pentium 4 3.0GHz or faster

Recommended CPU for up to 6-zone digital playback: Pentium Dual 1.60GHz or faster

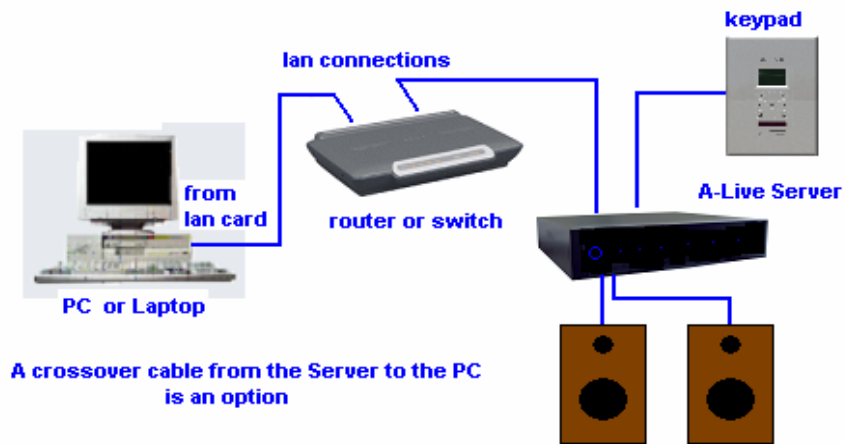
Memory: 512MB

HDD: 1Gbyte of free space

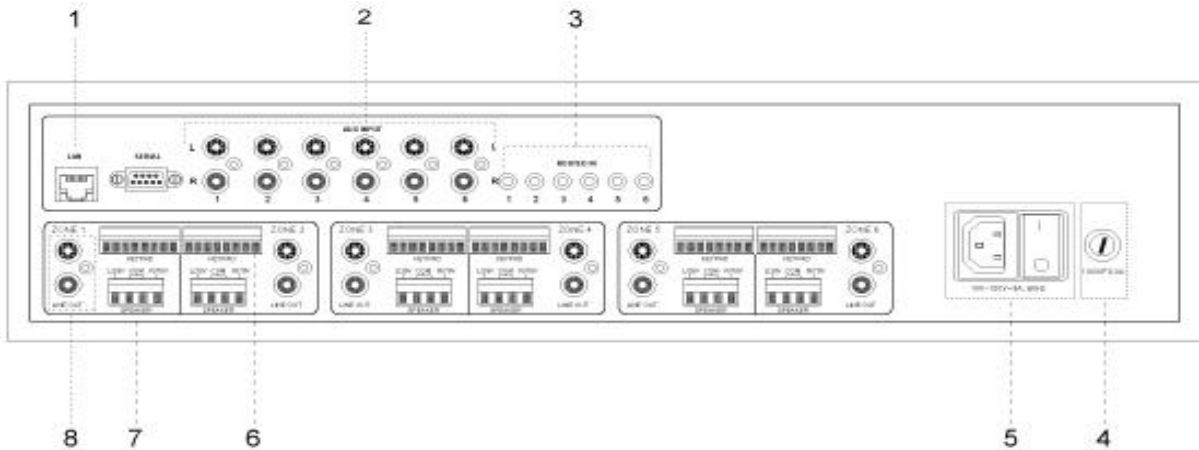
Getting Started

- Open the box and save it for storage or shipping purposes
- Check your box for the following items.
 - (1) **a-live** system
 - (1) Users Manual
 - (1) **a-live** Manager Installation CD
 - (6) Speaker Connectors and (6) Keypad Connectors
- The following tools are needed for installation
 - Small Flat head Screwdriver and small Phillips head Screwdriver
 - Wire cutter/stripper

Basic System Setup



Rear Panel



1. LAN Connection
2. Auxiliary Inputs
3. IR Transmitters
4. Fuse
5. AC Input
6. Keypad Inputs
7. Speaker Outputs
8. Zone Line Out

Sources

Auxiliary Sources

In addition to playing streaming music, you can connect up to six additional audio sources.



Examples of such sources are:

- Home Theater System
- CD Changer
- Satellite Radio
- Wireless Microphone Receiver
- MP3 Player
- AM/FM Tuner



** Each auxiliary input can be remotely controlled via the **a-live** keypad using the built-in IR pass-through. (see page 24 for more information)*

Playlist Formats

Playlists for **a-live** can be created through Windows Media Player (.WPL format) or iTunes (.XML format), and must consist of songs in the .M4A, .M4B, .MP3, .MP4 and .AAC formats. The **a-live** Manager will not play songs of other formats.

Please note that some music purchased from the iTunes store may be encrypted (if it has an .m4p extension) and not supported. The only current way to play encrypted music via **a-live** is to use a session of iTunes playing directly on your PC as one of the 6 analog sources.

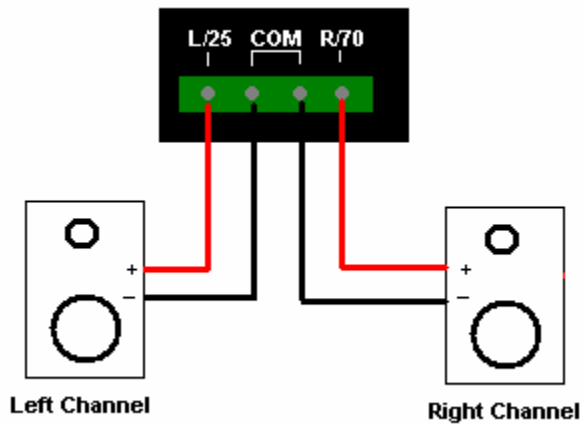
Windows Media Player is a trademark of Microsoft, Inc., registered in the US and other countries. iTunes is a trademark of Apple Inc., registered in the US and other countries.

Zone Output Wiring

Residential (8 Ω) Speaker Wiring

There are 6 distinct zones on the 8 Ω **a-live** system (A6X6A8). Each zone can support 40 watts of power (20 watts per each channel). 18 AWG wire should be sufficient for most residential applications. For wire runs longer than 300 feet, it is recommended to use 16 AWG. We suggest using plenum rated wire for all installations.

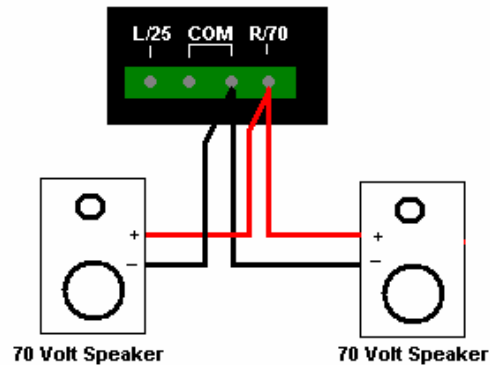
For an 8 Ω system, the left channel (L+) connection is located on the far left and the right channel (R+) is located on the far right. Their respective commons (-) are the two connections in the center. Below is a typical zone output terminal for the speaker(s) :



Above is the proper wiring for an 8 Ω speaker system.

Commercial (70/25V) Speaker Wiring

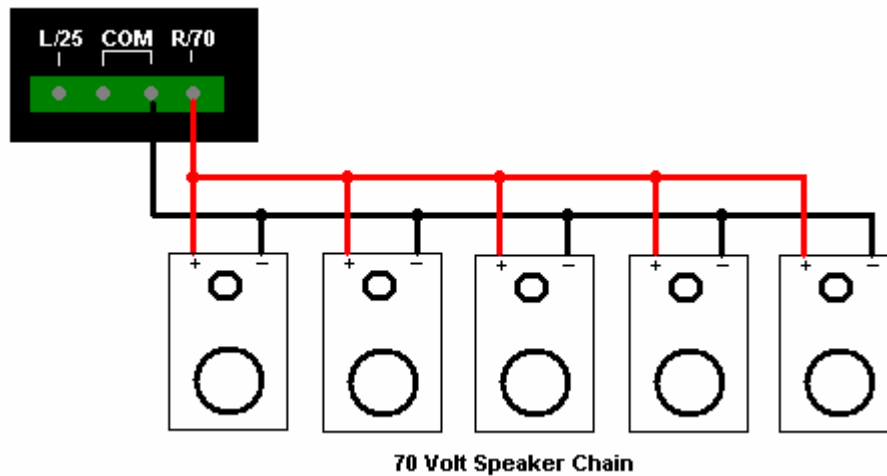
There are 6 distinct zones on the 70/25V **a-live** System (A6X6A70). Each zone can support 20 watts of power. 18 AWG wire should be sufficient for most commercial applications. For wire runs longer than 300 feet, it is recommended to use 16 AWG. We suggest using plenum rated wire for all installations. Below is a typical zone output terminal for the speaker(s):



Above is a parallel wiring configuration for a 70 Volt speaker system.

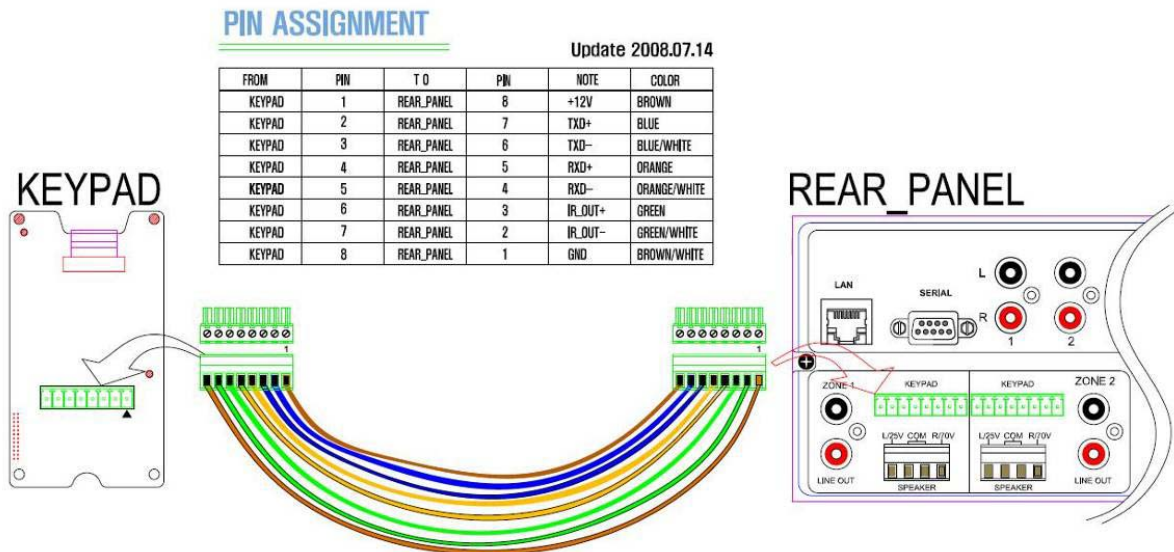
For a 70/25V system, the 25V (+) connection is located on the far left and the 70V (+) is located on the far right. The respective commons (-) are the two connections in the center.

- A 70 Volt system allows a user to daisy chain many speakers on a zone as long as the combined wattage settings of the speakers (in the chain) do not exceed the zones maximum wattage, which in this case is 20 Watts.
- Do not mix 70V and 25V speakers on a system installation. The installation should always be dedicated to either 70 Volt or 25 Volt. **NEVER** wire both outputs simultaneously.
- The wiring for a 70/25V system can be parallel (as shown above) or “loop thru” as shown below.
- Always observe and maintain speaker polarity (proper +/-) for optimal sound.



Keypad Wiring

1. A standard CAT-5 cable (up to 600 ft) is used to connect the keypad to the **a-live** server.



Network Wiring

1. The network connection between the **a-live** server and a PC or Laptop can be accomplished with a Cat 5e cable terminated with RJ-45 connectors on each end.
 - Please note that the maximum distance for this cable is 300 feet.
 - A network switch or router may be used as a junction point between these devices.



Network Connection to the **a-live** Server

How to Make a Playlist

With the **a-live** Manager, you have two playlist generation options. You can either use iTunes or Windows Media Player to create your playlists.

iTunes Playlist

Instructions on how to create a playlist via iTunes can be found in “iTunes Help”. Once your playlist is created, you must right-click on it and export it to a specific destination folder. You will need the exported (.xml) playlist for use in the **a-live** Manager.

Windows Media Player Playlist

Instructions on how to create a playlist via Windows Media Player can be found in the media players “Help”. Once a playlist is created, it is automatically saved into the users music folder under “playlists”. You will need the (.wpl) playlist for use in the **a-live** Manager.

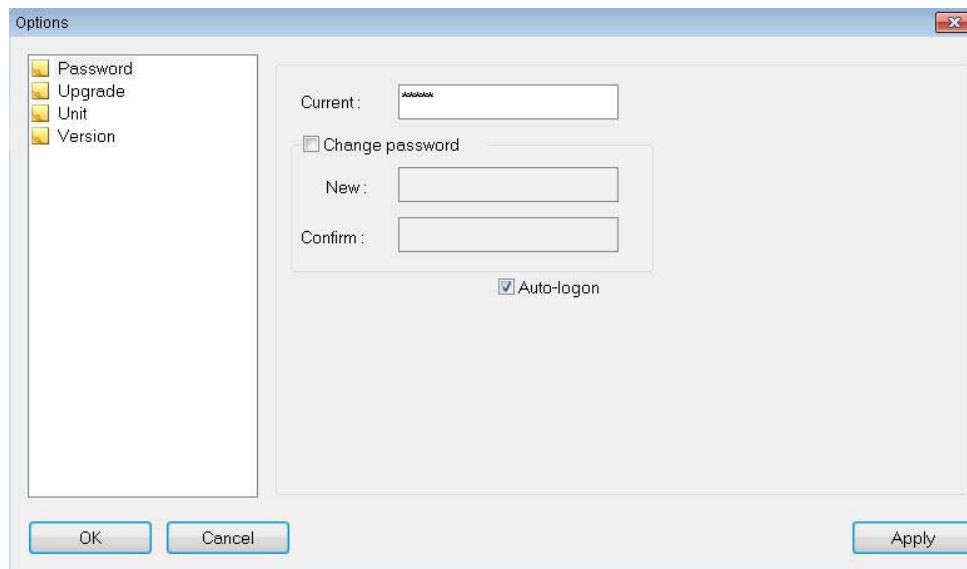
Manager Software

Manager Installation

- To install the **a-live** Manager, insert the software CD into your CD-ROM drive. The CD will auto-run and install a shortcut to the Manager on your desktop. You should always remove any prior installations of the Manager software before updating to a new version.

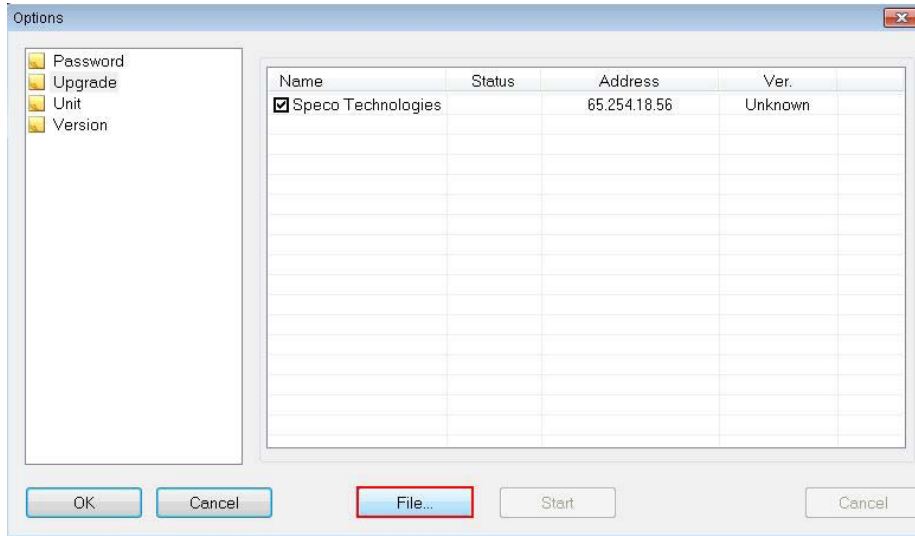
Password Creation & Auto Login

- When the **a-live** Manager is first initialized, you are prompted to create a password. You can change the password or change the password setting under **Options**. Select Auto-Login to not be prompted for a password every time the Manager is initialized.

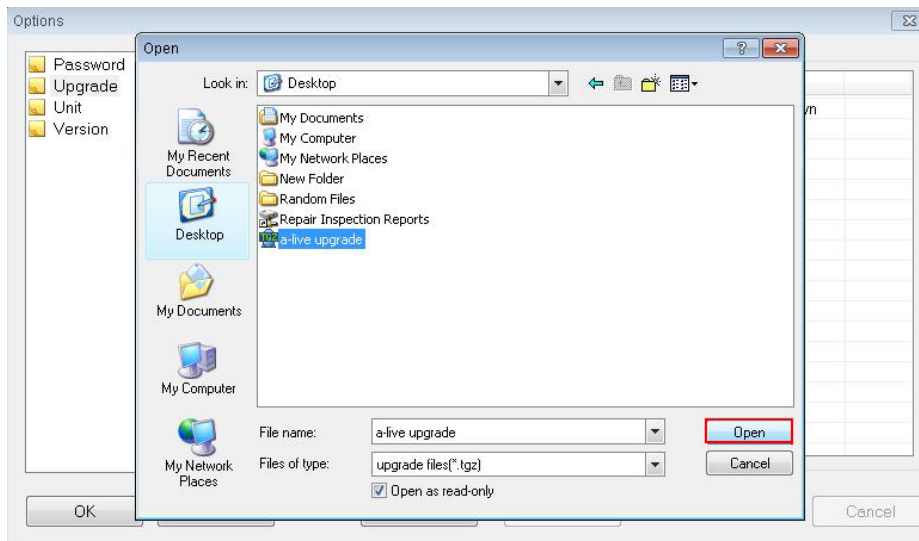


Upgrading the a-live Manager Software

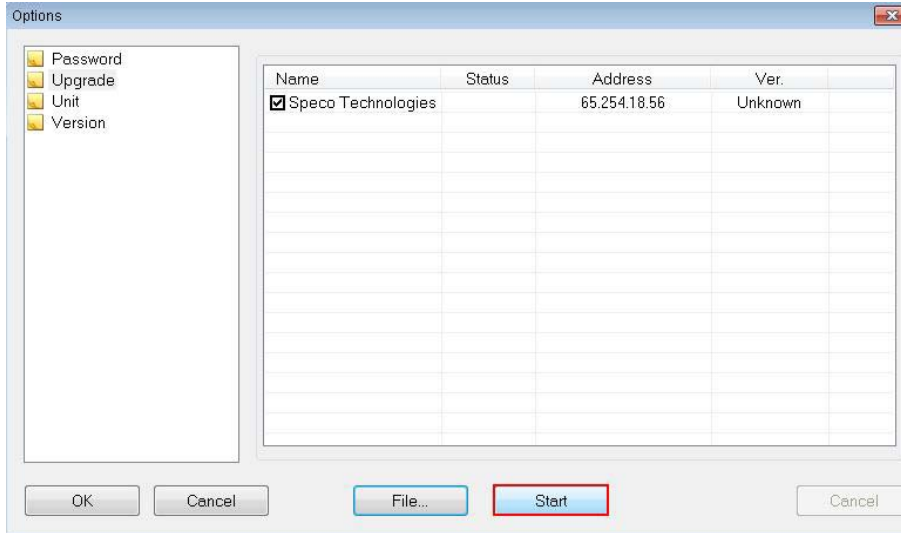
- Should an update to the a-live Manager be available, you can upgrade your software from the Manager's **Options** menu. First, open the **Options** menu, then select "Upgrade". The following menu will open:



- Ensure that the box next to your server name is checked off. Then, click **File**. The following screen will open up.

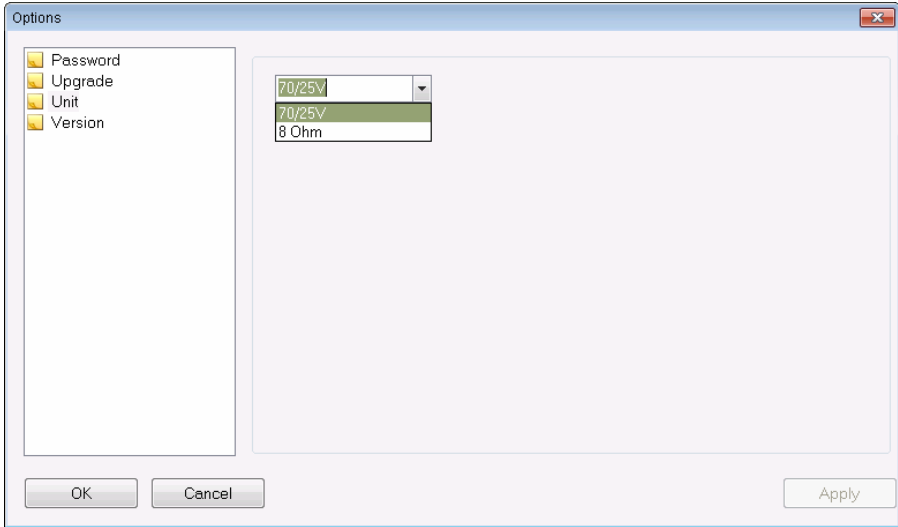


- Once the “Open” screen comes up, select the upgrade file and click on **Open**. You will be taken back to **Options** and the **Start** button is now accessible. Press **Start** and the status bar will first say “Ready” and then “Success”. Once **a-live** has been upgraded, press **OK** and it will take you back to the Manager. Your **a-live** hardware and Manager software must then be rebooted for the upgrade to take effect.



Unit Selection

The **a-live** Manager is designed to work with both the A6X6A8 8Ω version, and the A6X6A70 70/25V version. Selecting what version is associated with your Manager installation ensures optimal performance from your digital music. Simply select the “Unit” tab on the Options menu, and from the drop down, select the format of the system you are using.



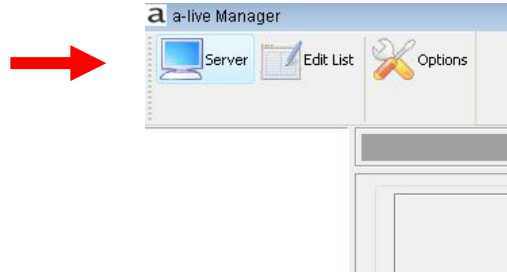
Version

Selecting the Version tab from the Options menu will tell you what version of the Manager software you are running. This could be useful in Technical Support situations or to determine if your software is utilizing the latest features.

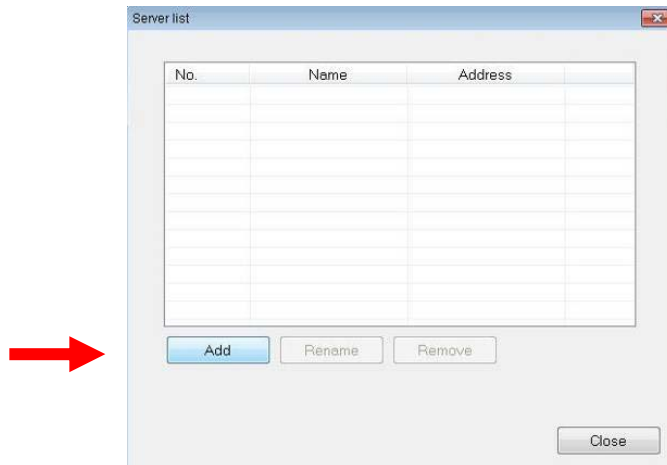
Server Settings (Name and IP Address)

Setting up your server is done through the **a-live** Manager. Follow the steps below

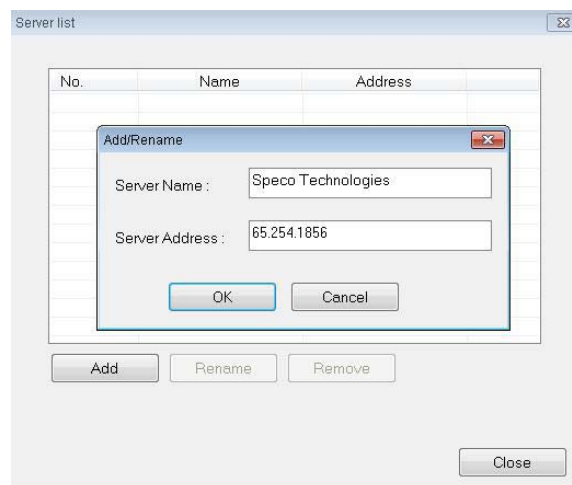
- Open up the **a-live** Manager and click on the **Server** icon located in the top left of the toolbar.



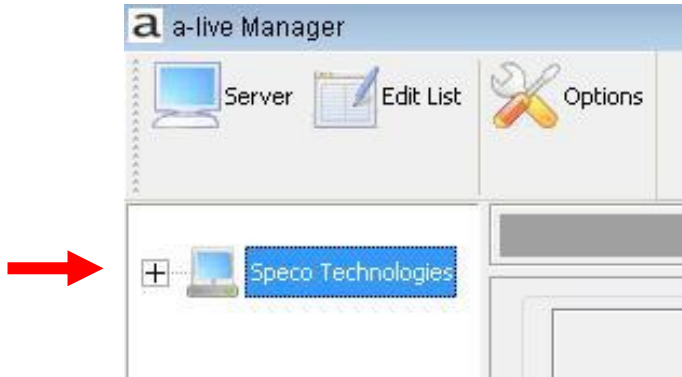
- A new window (Server List) will open. Click on the **Add** button located at the bottom left.



- The **Add/Rename** window will open next. Here you will input the name of your server and the **a-live** server IP address. For this example, "Speco Technologies" is the server name. Next, enter the IP address that will be applicable to your **a-live** server. When you have completed both sections, press the **OK** button.



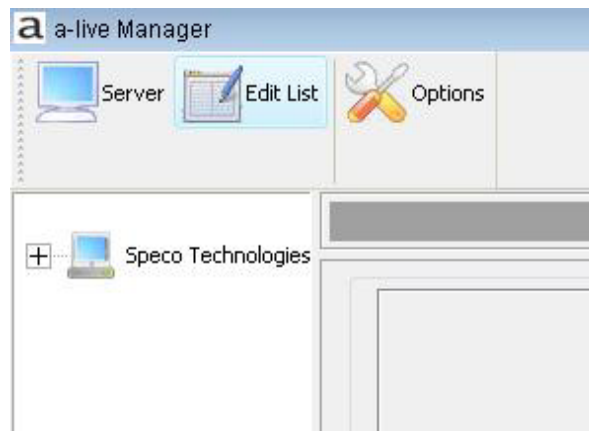
- After clicking the **OK** button, you are taken back to the Server list menu. Click **Close** and you will be taken back to the Manager main screen. If you have entered your servers IP correctly, a computer with your servers name will appear in the left hand column. The screen of the computer icon will turn blue once the Manager makes a successful connection to the **a-live** server.
 - Please note that the IP address entered in this section must be identical to the IP address that is entered on the keypad. See the “Keypad” section of this manual for that procedure.



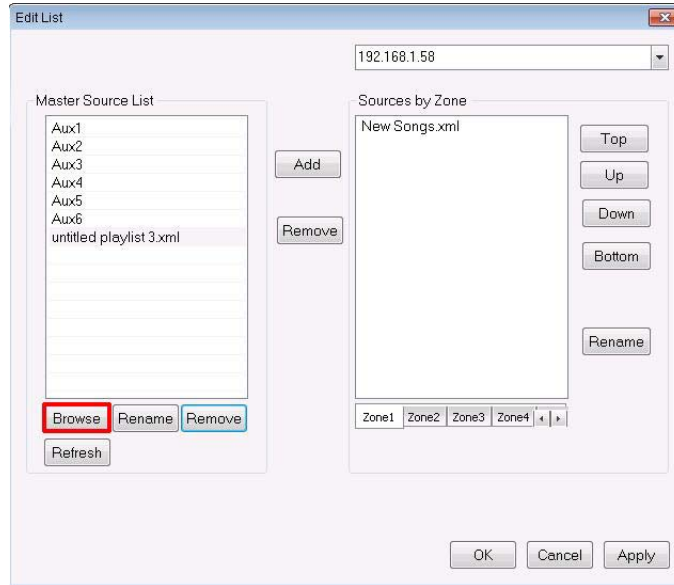
Editing a List (Master Source & Sources by Zone)

Once you have created your playlists, setting up your master source and sources by zone lists is easily done through the **a-live** Manager. Follow the steps below

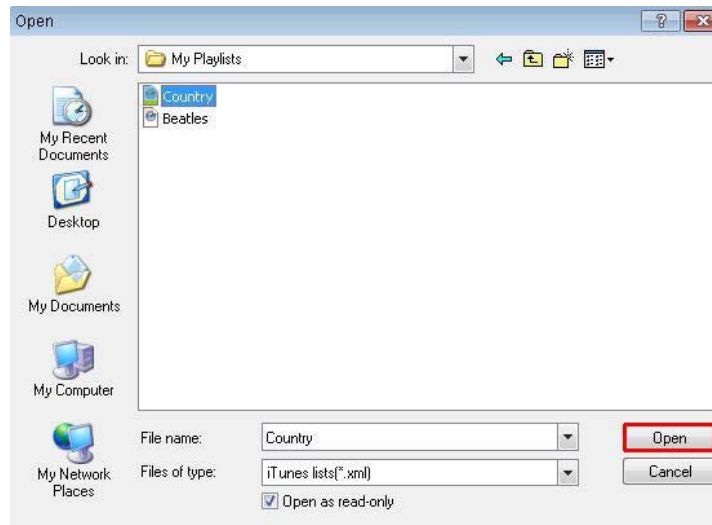
- Open up the **a-live** Manager and click on the **Edit List** icon located in the top left of the toolbar.



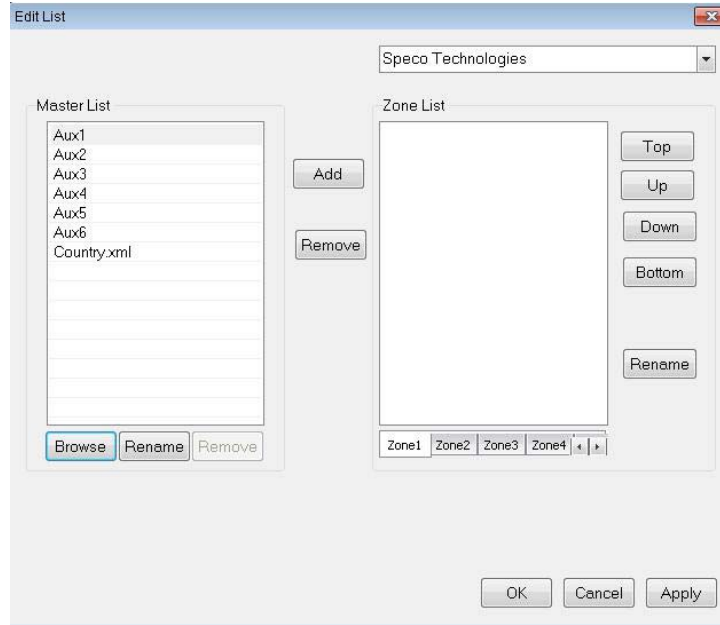
- A new window will open. In the left column of that menu, you should see Aux inputs 1 through 6. To add an existing playlist, click on the **Browse** button, located at the bottom left of the screen.



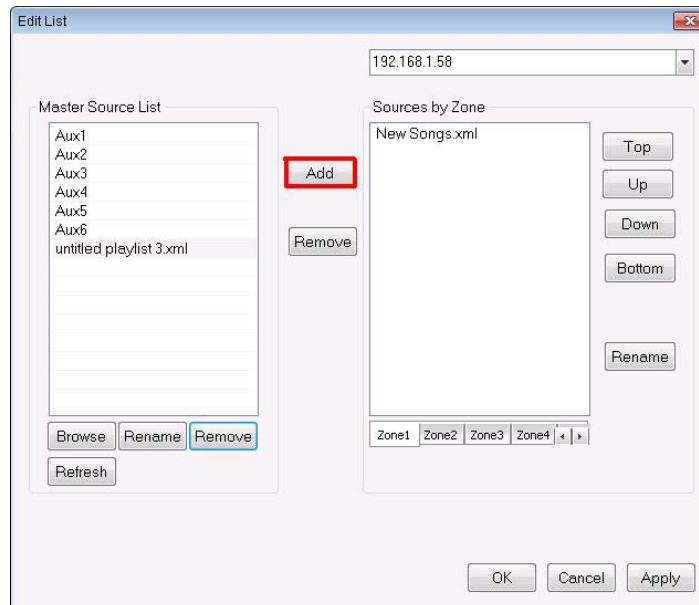
- A new window will open. Here you will search for the folder that contains your playlists. For this example, the “My Playlists” folder is used. Select the playlist that you want to import into the Manager. When finished, click on the **Open** button.



- After clicking on **Open**, you are taken back to the **Edit List** window. Your playlists should now be listed directly under your Auxs. Repeat the above steps as often as necessary.

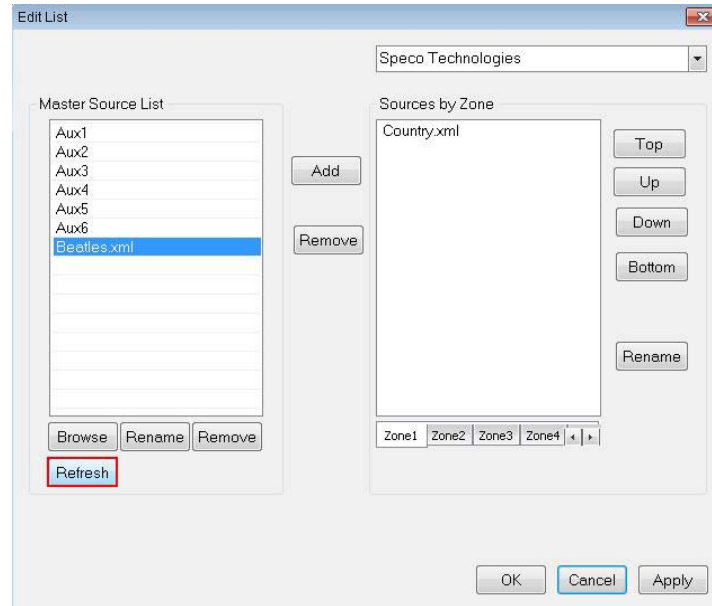


- Your next step is to select which playlist(s) and aux(s) you want to add in each zone. You will do this by choosing a zone from the **Sources by Zone** bar and then clicking on a playlist or Aux in the "Master Source List". Once you have done that, select the **Add** button. You can subsequently delete playlists from **Sources by Zone** by clicking on the playlist or Aux you want to remove and then clicking on the **Remove** button.

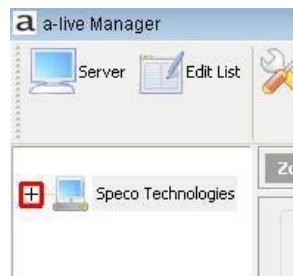


- Note that by clicking **Rename**, you have the ability to customize the names of the zones for easier reference.
- You can also edit the names of the auxiliary inputs from the **Edit List** window. Simply click once on the auxiliary to highlight the desired source, and then click again once on the highlighted source to edit. This is extremely useful to know what the actual source is from the remote keypads, as well as for future reference from the Manager.

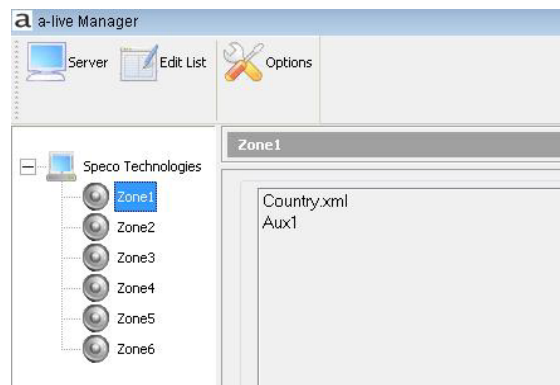
- **a-live** will NOT automatically update your songs if you've made any changes in the original playlists via iTunes or Windows Media Player. To update playlists, you should remove it from all zones, and then highlight the playlist in the Master Source List. Once highlighted, click on the **Refresh** button at the bottom of the column, and then re-add the playlist to all desired zones



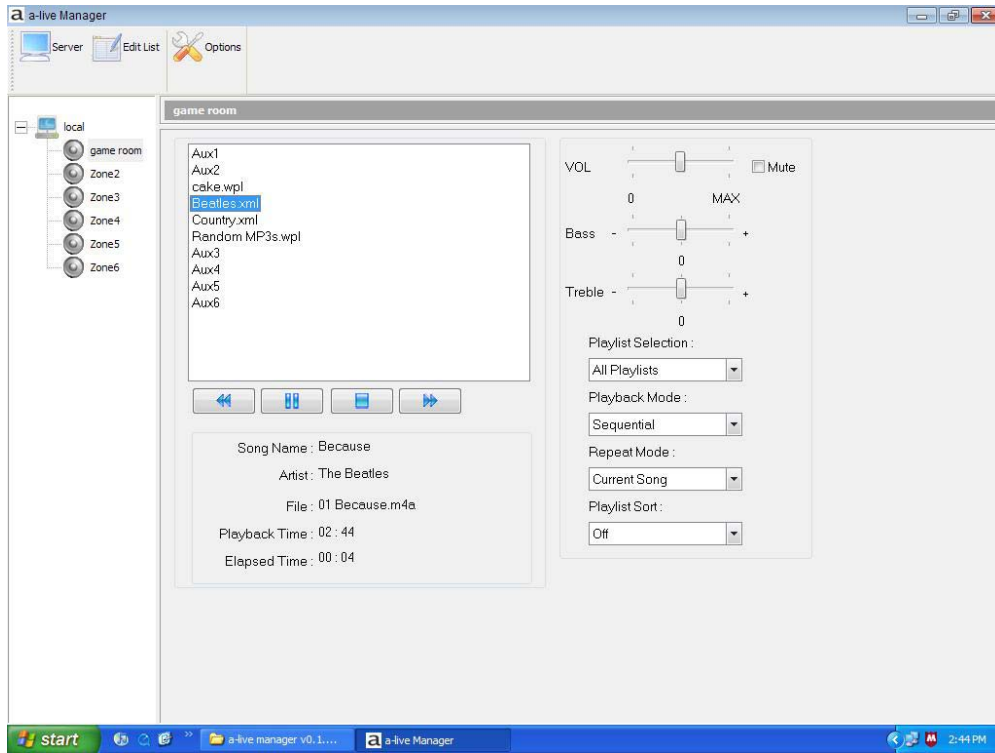
- Once you are done adding your playlists and auxiliaries to your zones, click on the **Apply** button followed by the **OK** button located on the bottom left of the menu screen. You will then be taken back to the Manager's main menu. Click on the **+** icon adjacent to your server to open your zone list.



- Click on each individual zone to ensure your playlists and auxiliaries have been imported.



Playing a Source



- Once the Playlists have been added to a zone simply highlight the playlist or auxiliary you would like to listen to and click on the play icon.

Playlist Selection:

All Playlists – Allow the Manager to access all playlists in the zone.

Current Playlist Only – The Manager will only play the selected playlist.

Playback Mode:

Sequential – All songs will play in the original play list order, and playlists will play in the order they are arranged on the **Edit List** window.

Random - All songs will play in a non-fixed order.

Please note that if The Playlist Selection is set to All Playlists and Random playback is also selected then the song selections will jump from Playlist to Playlist.

Repeat Mode:

Off – The playlist(s) will stop after one time through.

Current Song – The currently selected audio file will play in an endless loop.

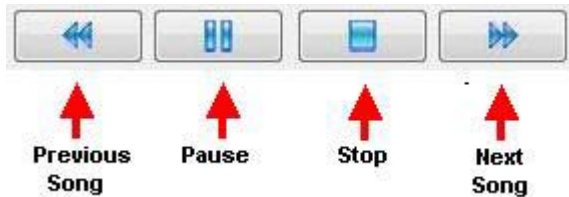
Current Playlist – The current playlist will repeat in an endless loop.

Playlist Sort:

This feature will allow the listener to sort the song list by: Genre, Artist, Album, Title, Filename or set to Off.

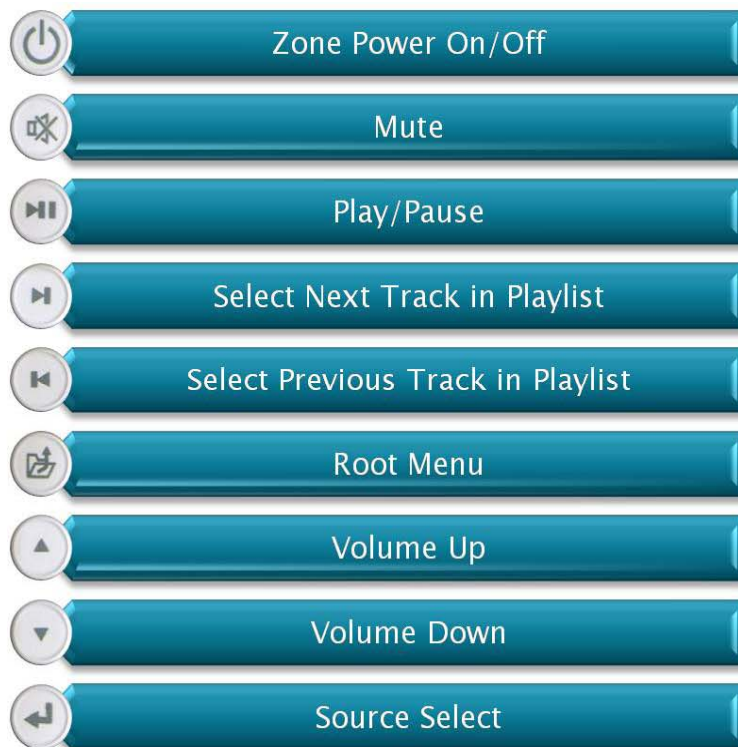
- From the Manager home page, you will be able to monitor the song that is currently playing, the artists name, the origin file, the total playback time and the elapsed time of the song.
- Bass and Treble settings that will be synchronized with the zones keypad.
- Zone Mute control is also available on this page.

Song Controls:



Keypad

Keypad Icon Definitions:



Keypad Menu Tree:

After initialization, the keypad will display "Aux 1" (as shown below).

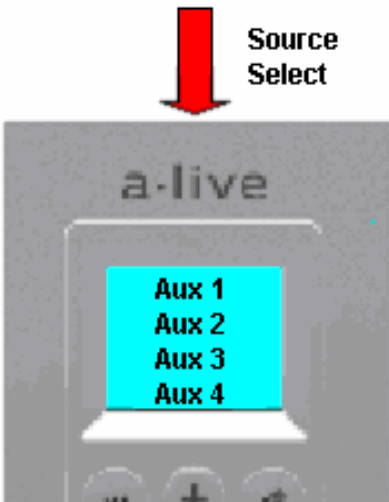


With the keypad wired and attached to the **a-live** unit, the keypad will initialize after power has been applied.

The user can at this time set the volume for this zone by pressing the UP/DN arrow buttons.

Or Press
Source Select

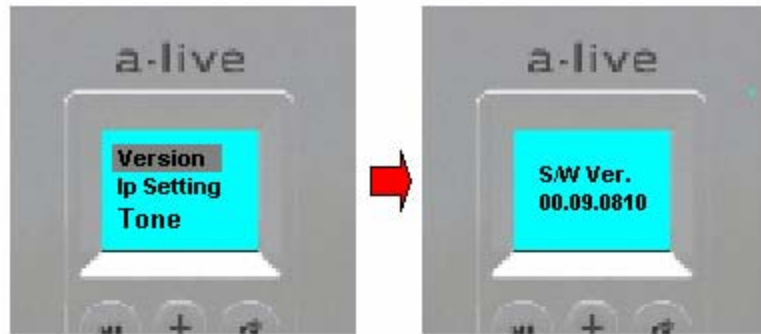




Source Select

After pressing "Source Select," the display will show the complete auxiliary list that is available to that zone. Please Note that the very first keypad initialization will display all 6 Zones. Once the Edit List has been programmed, the auxiliary list from then on will show only the Auxe that have been added to the zone until the next server reboot.

Press the “Root Menu” button. The LCD will display the menu shown to the immediate right. Press the “Source Select” button to display the current software revision number. (far right)



Or press the down arrow button to access the IP Setting. Here you may view the current setting. Press the “Source Select” button to view and/or change this setting for your specific LAN environment. (far right)



Or press the down arrow to access the Tone menu. Press the “Source Select” button to access the Tone control menu where the Bass and Treble settings reside. Press the “Root Menu” button to return to the “Now Playing” screen.



Setting the IP Address:

- The IP address that is entered into the server should be the same IP address that was entered into the “Server” IP in the Manager software.
- The Gateway entry is not necessary for a LAN connection.

Additional Keypad Features:

- Single Zone Mute – Press the “Mute” button for 1 second. This action will mute the zone associated with that keypad.

To Exit Single Zone Mute, Press and Hold the “Mute” button for 1 second. Mute will release.

Controlling AUX Sources via IR Pass Through on Keypads

- To utilize a keypad's IR pass-through, you will need the following
 - The remote control that came with the AUX you are trying to control or a properly programmed universal remote
 - (1) IR extender cable for every (1) AUX input you want to control
- To control an AUX source via a keypad's IR pass-through, the following steps must be taken.
 - Plug the IR extender cable in the corresponding AUX IR port on the rear of the unit. (i.e., if your CD Player is your AUX 1 source then IR extender cable must be plugged into IR port # 1, Aux 2 into IR port # 2, etc.) Repeat this step for each AUX source you have connected to **a-live**.
 - Place the other end of the IR extender cable onto the IR sensor of the AUX you want to control (usually labeled and located on front of an AUX device)
 - Once setup is complete, select whichever AUX input you would like to listen to via the keypad.
 - Once AUX input is selected, you can now point your remote control at the **a-live** keypad and control your AUX source. (it is suggested that you not be more than 30 feet away from keypad while doing this)
 - As a convenience, **a-live** will ONLY control the active aux in any given zone. This will prevent a remote control from interfering with play in another zone.

Technical Specifications

Audio source inputs:	6
Zones per unit:	6
Multiple server management on LAN:	Yes
Keypad ports:	RS-422
Interface ports:	RJ-45 for 100Mbps LAN (Ethernet), RS-232 for system diagnostics
Source input connectors:	RCA jacks (left and right)
Source input impedance:	50k Ω
Source input level:	2.2 Vrms max
Amplifier channels:	6 channels (A6X6A70) / 12 channels (A6X68)
Power output:	20 watts per channel RMS (A6X6A70) 40 watts per channel RMS (A6X68)
Frequency response:	20 Hz to 20 kHz +0/-2.5 dB
Distortion:	<0.10%THD+N from 20 Hz to 20 kHz
Signal-to-noise ratio:	>90 dB A-weighted, >88 dB unweighted
Speaker impedance (Nominal, minimum):	8 Ω nominal, 6 Ω minimum (A6X68)
Speaker connectors:	Removable 4-pole coded snap
Audio line outputs:	2.2Vrms (Fixed)
Line output connectors:	RCA jacks (1 pair per zone – L/R for A6X68, bridged mono for A6X6A70)
Power rating:	100-120VAC 3A or 220-240VAC 1.25A, 50-60Hz
Fuse rating:	F3.0A H 250V USA and Canada
Dimensions:	17"W x 17.4" L x 3.5" H
Weight:	38 lbs.

Troubleshooting

PROBLEM	CAUSE	REMEDY	REFER TO PAGE
The Unit will not turn on.	The power cord is not connected or the plug in not completely inserted.	Firmly connect the power cord	N/A
	The power switch is in the "Off" position	Set the switch to the "on" position and then press the power button on the front of the unit.	N/A
	The fuse is blown.	Replace the fuse	N/A
Sound is not produced.	The speakers aren't connected.	Firmly connect the speaker connectors.	7
	The "Mute" box is selected in the Manager software.	Unselect the "Mute" option in Manager or press the "Mute" button on Keypad	N/A
	The volume control is set to zero.	Adjust the volume control to appropriate setting.	N/A
The sound suddenly goes off.	You have lost your network connection.	Check all cables and network devices.	7
	You are trying to play protected music files.	Use music files with .mp3, .mp4, .m4a, .m4b or .AAC. Protected (.m4p) music purchased through iTunes is not supported.	N/A
There is no connection between the Manager and a-live .	The Ethernet cable is not connected or it is not completely inserted.	Firmly connect the Ethernet cable.	11
	Your IP addresses are matched.	Ensure that your computer and a-live have matching IP addresses.	15 & 23
	Your Ethernet cable is bad.	Replace the Ethernet cable.	N/A
The auxiliary inputs don't work.	The RCA cables are not connected or completely inserted.	Firmly connect the RCA cables.	7
	You forgot to set-up you're auxiliaries through the Manager.	Install the a-live Manager software onto your computer and set up your a-live . This step is essential even if you plan on only using Auxs.	12

Warranty and Repair

We warranty this product to be free from any manufacturing or material defects for **two (2) years** from the date of purchase. This warranty will not extend to any products which have been subjected to misuse, neglect, accident, or improper installation, used in violation of instructions furnished by us; or to units which have been repaired or altered outside of the factory. This limited warranty does not apply to broken cases, batteries, or other physically damaged parts. Unless requested, the company will replace and return all merchandise in the packaging in which it was received. This warranty is in lieu of all expressed warranties, expressed or implied, and of all obligations or liability on our part, and we neither assume nor authorize any representative or other person to assume for us any obligation or liability. In no event shall we be liable for incidental or consequential damages arising from the use of the product, or for any delay in the use of this product do to causes beyond our control. Some states do not allow limitations of how long an implied warranty lasts and/or do not allow the exclusion or limitation of consequential damages. The above limitations on implied warranty and consequential damages may not apply to you. This warranty gives you specific legal rights. You may have other rights which vary from state to state.

Registration

To register your product, please go to <http://www.specotech.com/aliveregistration>



200 New Highway
Amityville, NY 11701
Phone 631.957.8700 • Toll Free 1.800.645.5516
www.specotech.com

X-ON Electronics

Largest Supplier of Electrical and Electronic Components

Click to view similar products for [Other Tools](#) category:

Click to view products by [MCM](#) manufacturer:

Other Similar products are found below :

[CR-05FL7--150R](#) [CR-05FL7--698K](#) [899-2-KT46](#) [899-5-KT46](#) [CR-0AFL4--332K](#) [CR-12FP4--80R6](#) [CRCW04021100FRT7](#)
[CRCW04021961FRT7](#) [5800-0090](#) [CRCW04024021FRT7](#) [CRCW040254R9FRT7](#) [CRCW0603102JRT5](#) [59065-5](#) [00-8273-RDPP](#) [00-8729-](#)
[WHPP](#) [593033](#) [593058](#) [593072](#) [593564100](#) [593575](#) [593591](#) [593593](#) [011349-000](#) [LTLA506SBLAMNBL](#) [CRCW08052740FRT1](#) [LUC-](#)
[012S070DSM](#) [599-2021-3-NME](#) [599-JJ-2021-03](#) [00-5080-YWPP](#) [5E4750/01-20R0-T/R](#) [LW1A-L1-GD](#) [LW1A-L1-GL](#) [LW1A-P1-GD](#)
[LW1L-A1C10V-GL](#) [LW1L-M1C70-A](#) [0202-0173](#) [00-9089-RDPP](#) [00-9300-RDPP](#) [CRCW2010331JR02](#) [01-1003W-8/32-10](#) [601-GP-08-](#)
[KT39](#) [601-JJ-06](#) [601-SPB](#) [601YSY](#) [602-JJ-03](#) [602SPB](#) [603-JJ-07-FP](#) [603-JJY-04](#) [604J](#) [604-JJ-05](#)