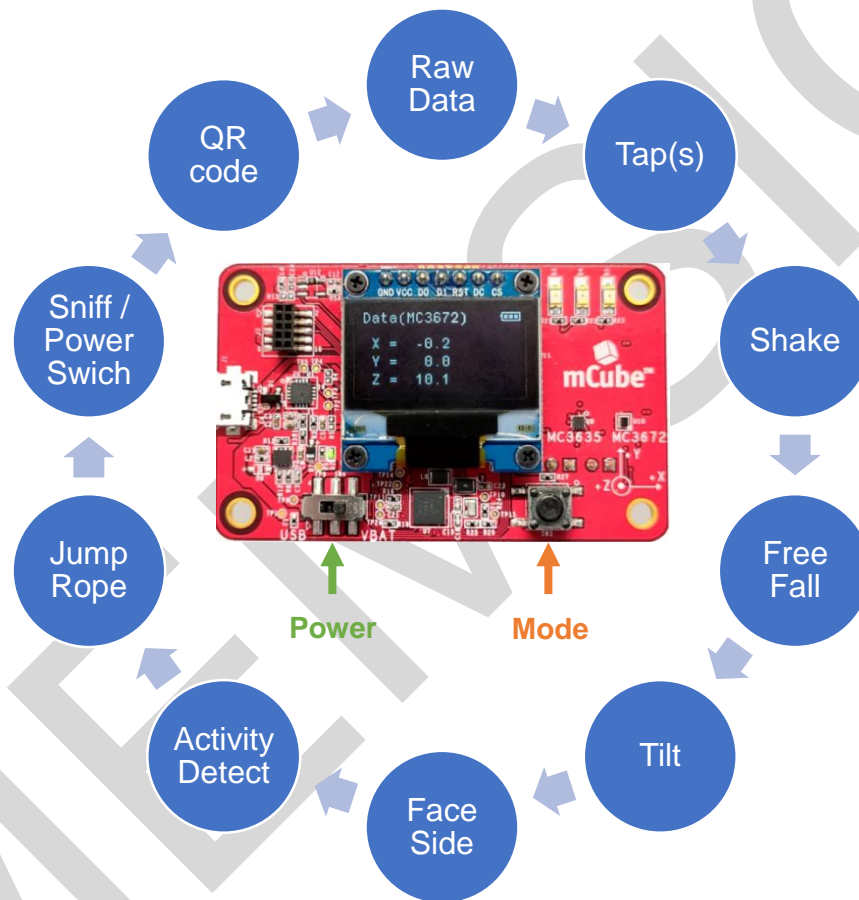


The DB3672B Demo Board is a standalone accelerometer demonstration platform that enables firsthand user experience of the IoMT (Internet of Moving Things) functionality for the latest MEMSIC motion sensors. It highlights both the MC3672 (1.1 x 1.3 x 0.74 mm CSP) and MC3635 (1.6 x 1.6 x 0.94 mm LGA) ultra-low power, 3-axis accelerometers by providing g-force data to a 32-bit ARM Cortex-M4. Motion sensing algorithms are performed in firmware on the MCU to demonstrate popular accelerometer use cases. These include a variety of activity tracking, user interface and power management functions. Results and status are displayed live on the on-board OLED display. The board is also equipped with a USB/UART interface for easy firmware upgrades and external power.



Start experiencing the Internet of Moving Things (IoMT):

- 1) Slide the **power switch** to the right
- 2) Press the **mode selection button** to cycle through each demo (see order above)
- 3) Results are displayed live on the OLED display

- Get the complete DB3672B User Guide from MEMSIC
- Purchase the EV3672A or EV3635A Evaluation Boards for fast prototyping
- Source code for the most popular DB3672B algorithms are available from MEMSIC

X-ON Electronics

Largest Supplier of Electrical and Electronic Components

Click to view similar products for [Acceleration Sensor Development Tools](#) category:

Click to view products by [mCube](#) manufacturer:

Other Similar products are found below :

[2019](#) [EVAL-ADXL343Z-S](#) [BRKOUT-FXLN8362Q](#) [MXC6655XA-B](#) [1018](#) [EVAL-ADXL362-ARDZ](#) [EVAL-KXTJ2-1009](#) [1231](#) [1413](#) [DEV-13629](#) [2020](#) [EVAL-ADXL343Z-DB](#) [EVAL-ADXL344Z-M](#) [EVAL-ADXL375Z-S](#) [EV-BUNCH-WSN-1Z](#) [EV-CLUSTER-WSN-2Z](#) [STEVAL-MKI033V1](#) [EVAL-ADXL344Z-DB](#) [EVAL-ADXL346Z-DB](#) [EVAL-ADXL363Z-MLP](#) [EV-CLUSTER-WSN-1Z](#) [2472](#) [EVAL-ADXL312Z](#) [EVAL-ADXL343Z](#) [EVAL-ADXL344Z-S](#) [EVAL-ADXL363Z-S](#) [EVAL-ADXL375Z](#) [STEVALMKI032V1](#) [DFR0143](#) [SEN0032](#) [SEN0079](#) [SEN0168](#) [SEN0224](#) [MXD6240AU-B](#) [FIT0031](#) [SEN-13963](#) [MXP7205VW-B](#) [ASD2511-R-A](#) [3463](#) [SEN0140](#) [SEN0183](#) [SEN-11446](#) [EVAL-KX022-1020](#) [EVAL-KX023-1025](#) [163](#) [2809](#) [4097](#) [4344](#) [4627](#) [4626](#)