



- Features :
- Suitable for redundant operation of 24V system
 - Installed on DIN Rail TS35 / 7.5 or 15
 - Relay contact signal output and LED indicator for input failure alarm
 - Cooling by free air convection
 - 3 years warranty



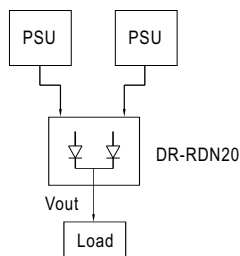
SPECIFICATION

MODEL		DR-RDN20
OUTPUT	REVERSE VOLTAGE (max.)	30V
	OUTPUT CURRENT (max.)	20A
	VOLTAGE DROP	0.6V
	LED INDICATORS	Two green LEDs indicating each input is "OK or fail"
INPUT	INPUT VOLTAGE RANGE	21 ~ 28V
	NUMBER OF INPUTS	Two
	INPUT CURRENT (max.)	20A per input
FUNCTION	INPUT VOLTAGE ALARM	When input is > 20V(±5%) or < 30V(±5%) relay contacts
	RELAY CONTACT RATING (max.)	30VDC, 1A
ENVIRONMENT	WORKING TEMP.	-40 ~ +70°C
	WORKING HUMIDITY	20 ~ 90% RH non condensing
	STORAGE TEMP., HUMIDITY	-40 ~ +85°C, 10 ~ 95% RH
	VIBRATION	10 ~ 500Hz, 2G 10min./1cycle, period for 60min. each along X, Y, Z axes ; Mouning: Compliance to IEC60068-2-6
SAFETY & EMC (Note 2)	SAFETY STANDARDS	UL508, AS/NZS 62368.1, EAC TP TC 004 approved
	WITHSTAND VOLTAGE	Terminal-Chassis :0.5KVAC, Relay Contacts-Terminal :0.5KVAC
	ISOLATION RESISTANCE	Terminal-Chassis :>100M Ohms / 500VDC / 25°C / 70% RH
	EMC EMISSION	Compliance to EN55032 (CISPR32) Class B, EN61000-3-2,-3, EAC TP TC 020
OTHERS	EMC IMMUNITY	Compliance to EN61000-4-2,3,4,5,6,8,11, heavy industry level, criteria A, EAC TP TC 020
	MTBF	996.8Khrs min. MIL-HDBK-217F (25°C)
	DIMENSION	55.5*125.2*100mm (W*H*D)
	PACKING	0.5Kg; 20pcs/11Kg/1.49CUFT
NOTE	<p>1. All parameters NOT specially mentioned are measured at 24VDC input, rated load and 25°C of ambient temperature.</p> <p>2. The power supply is considered a component which will be installed into a final equipment. All the EMC tests are been executed by mounting the unit on a 360mm*360mm metal plate with 1mm of thickness. The final equipment must be re-confirmed that it still meets EMC directives. For guidance on how to perform these EMC tests, please refer to "EMI testing of component power supplies." (as available on http://www.meanwell.com)</p> <p>3. The ambient temperature derating of 3.5°C/1000m with fanless models and of 5°C/1000m with fan models for operating altitude higher than 2000m(6500ft).</p> <p>※ Product Liability Disclaimer : For detailed information, please refer to https://www.meanwell.com/serviceDisclaimer.aspx</p>	

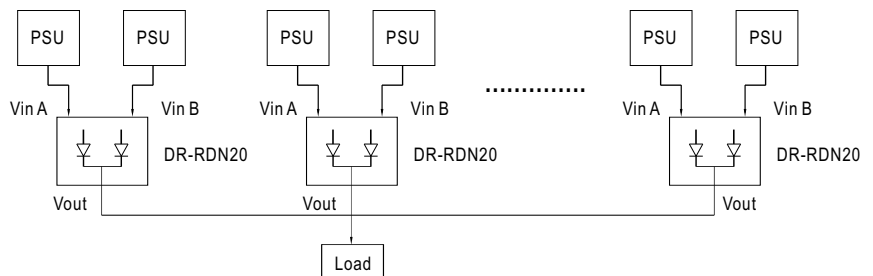
Typical Application Notes

1. 1+1 Redundancy

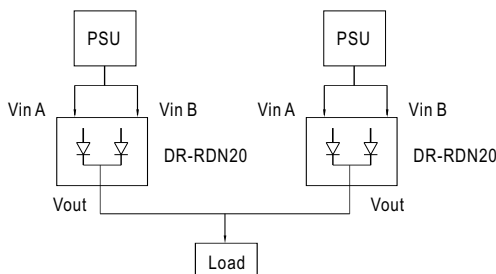
Using 1 more PSU as the redundant unit



2. 1+N Redundancy: Using more PSUs as the redundant units to increase the reliability

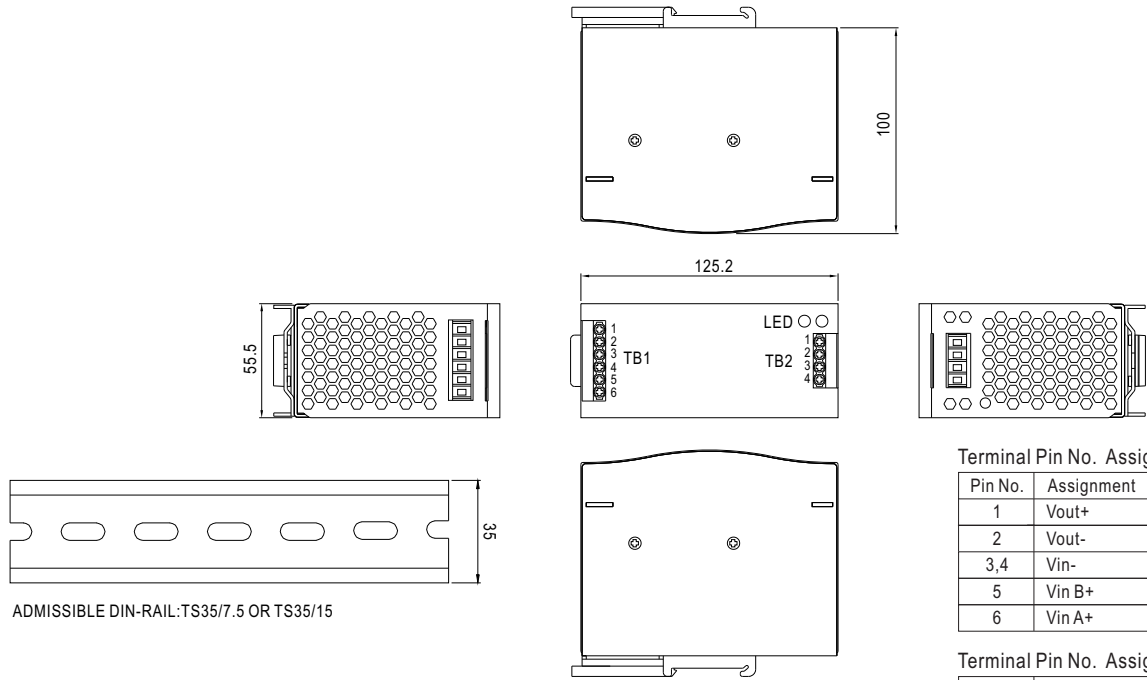


3. Single Use: Connecting only one PSU to one DR-RDN20 to reduce the stress of the diodes and hence increase the reliability



Mechanical Specification

Case No.923C Unit:mm



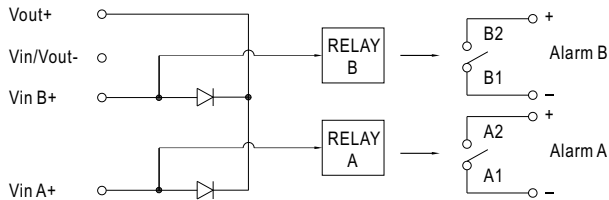
Terminal Pin No. Assignment (TB1)

Pin No.	Assignment
1	Vout+
2	Vout-
3,4	Vin-
5	Vin B+
6	Vin A+

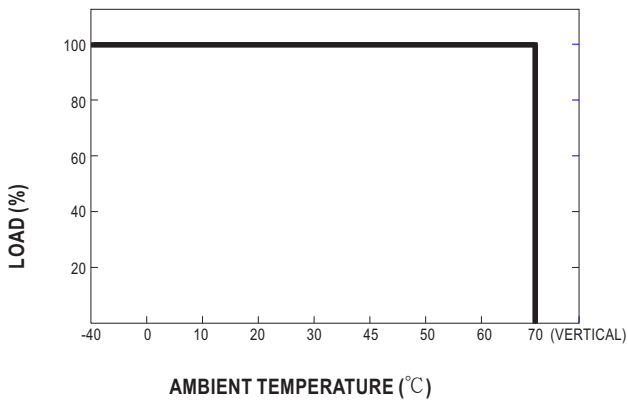
Terminal Pin No. Assignment (TB2)

Pin No.	Assignment
1	Alarm B1
2	Alarm B2
3	Alarm A1
4	Alarm A2

Block Diagram



Derating Curve



X-ON Electronics

Largest Supplier of Electrical and Electronic Components

Click to view similar products for [DIN Rail Power Supplies](#) category:

Click to view products by [Mean Well](#) manufacturer:

Other Similar products are found below :

[PS-S6024](#) [DVP01PU-S](#) [DVP06AD-S](#) [DVP06XA-S](#) [DVDPNET-SL](#) [DVPDT01-S](#) [DVPPS01](#) [PS-6012](#) [PS9Z-5R1G](#) [PS-C24024](#)
[DVP08ST11N](#) [DVPACAB530](#) [DVPCOPM-SL](#) [DVPEN01-SL](#) [DVPPF01-S](#) [ADNB008-48-1PM-C](#) [ADNB017-24-1PM-C](#) [ADNB040-24-1PM-C](#) [ADNB034-12-1PM-C](#) [SS14011524](#) [S8TS-06024-E1](#) [PS-UPS40](#) [PSC-6024](#) [PSD-A60W12](#) [96PS-A120WDIN](#) [PSD-A60W48](#) [PSD-A40W12](#) [PSD-A40W24](#) [SMP21-L20-DC24V-5A](#) [PSD-A40W48](#) [S8T-DCBU-02](#) [PS-S4024](#) [NTPS-24-1.3](#) [PST-96024](#) [S82YVSC4P](#) [PS-S4005](#) [PS-10024](#) [PS-S10024](#) [PS-C12024](#) [PSP-480S24](#) [PS-C48024](#) [PSC-2024](#) [PSC-4012](#) [PSC-4015](#) [PSC-4048](#) [PSC-9615](#) [PSC-15124](#) [PSC-15148](#) [PSC-24148](#) [PSC-48148](#)