



■ Features :

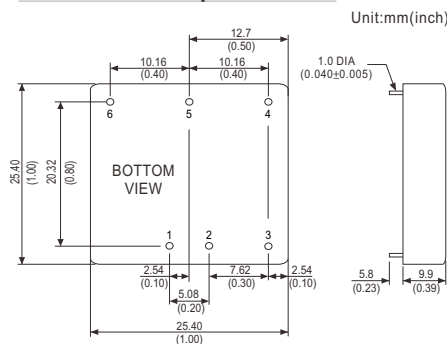
- 1"x1" compact size
- 2:1 wide input range
- High efficiency up to 88%
- 1500VDC I/O isolation
- Built-in remote ON/OFF control
- Built-in trimming output(±10%)
- Built-in EMI filter
- Protections: Short circuit / Overload / Over voltage
- Cooling by free air convection
- Six-sided shield metal case
- 100% burn-in test
- Low cost / High reliability
- Approvals: FCC / EAC / CE / UKCA
- 2 years warranty



SPECIFICATION

ORDER NO.	SKM15A-05	SKM15B-05	SKM15C-05	SKM15A-12	SKM15B-12	SKM15C-12	SKM15A-15	SKM15B-15	SKM15C-15	
OUTPUT	DC VOLTAGE			12V			15V			
	CURRENT RANGE			125 ~ 1250mA			100 ~ 1000mA			
	RATED POWER			15W						
	RIPPLE & NOISE (max.) Note.2			50mVp-p			60mVp-p			
	LINE REGULATION Note.3			±0.5%						
	LOAD REGULATION Note.4			±0.5%						
	VOLTAGE ACCURACY			±2.0%						
	SWITCHING FREQUENCY			400KHz typ.						
	EXTERNAL CAPACITANCE LOAD (max.)			1000uF						
EXTERNAL TRIM Adj. RANGE(Typ.)			±10%							
INPUT	VOLTAGE RANGE A: 9 ~ 18VDC B: 18 ~ 36VDC C: 36 ~ 75VDC									
	EFFICIENCY (Typ.)									
	DC CURRENT	Full load			1500mA	750mA	380mA	1500mA	750mA	380mA
		No load			80mA	55mA	35mA	35mA	25mA	15mA
	FILTER Pi network									
	REMOTE CONTROL Power ON : R.C ~ -Vin > 2.5VDC or open circuit ; Power OFF : R.C ~ -Vin < 0.5VDC or short									
PROTECTION Fuse recommended										
PROTECTION (Note. 5)	OVER CURRENT 110% ~ 180% rated output power Protection type : Hiccup mode, recovers automatically after fault condition is removed									
	SHORT CIRCUIT All output equipped with short circuit Protection type : Hiccup mode, recovers automatically after fault condition is removed									
	OVER VOLTAGE 115% ~ 150% rated output voltage Protection type : Clamp by diode, recovers automatically after fault condition is removed									
ENVIRONMENT	WORKING TEMP. -40 ~ +80°C (Refer to "Derating Curve")									
	WORKING HUMIDITY 20% ~ 90% RH non-condensing									
	STORAGE TEMP., HUMIDITY -55 ~ +100°C, 10 ~ 95% RH									
	TEMP. COEFFICIENT ±0.03% / °C (0 ~ 50°C)									
	VIBRATION 10 ~ 500Hz, 2G 10min./1cycle, period for 60min. each along X, Y, Z axes									
SAFETY & EMC	SAFETY STANDARDS EAC TP TC 020/2011 (EAC TP TC 004 for 48Vin type only) approved									
	WITHSTAND VOLTAGE I/P-O/P:1.5KVDC									
	ISOLATION RESISTANCE I/P-O/P: 100M Ohms / 500VDC / 25°C / 70% RH									
	EMC EMISSION Compliance to BS EN/EN55032 Class A, FCC part 15 Class A, EAC TP TC 020									
OTHERS	EMC IMMUNITY Compliance to BS EN/EN61000-4-2,3,4,5,6,8, light industry level, criteria A, EAC TP TC 020									
	MTBF 400Khrs min. MIL-HDBK-217F(25°C)									
	DIMENSION 25.4*25.4*9.9 mm or 1**1**0.39" inch (L*W*H)									
WEIGHT 15g										

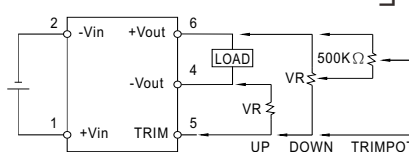
■ Mechanical Specification



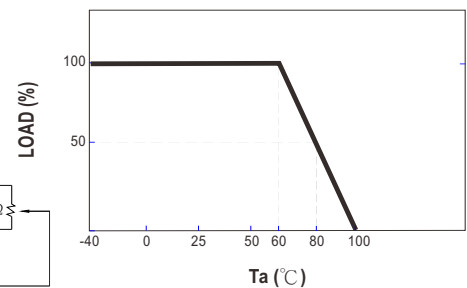
■ Pin Configuration

Pin No.	Output	Pin No.	Output
1	+Vin	4	-Vout
2	-Vin	5	Trim
3	R.C.	6	+Vout

■ External Output Trimming



■ Derating Curve



NOTE

- 1.All parameters are specified at normal input, rated load, 25°C 70% RH ambient.
 - 2.Ripple & noise are measured at 20MHz by using a 12" twisted pair terminated with a 0.1uf & 47uf capacitor.
 - 3.Line regulation is measured from low line to high line at rated load.
 - 4.Load regulation is measured from 10% to 100% rated load.
 - 5.Please prevent the converter from operating in overload or short circuit condition for more than 30 seconds.
- ※ Product Liability Disclaimer : For detailed information, please refer to <https://www.meanwell.com/serviceDisclaimer.aspx>

X-ON Electronics

Largest Supplier of Electrical and Electronic Components

Click to view similar products for [Isolated DC/DC Converters](#) category:

Click to view products by [Mean Well](#) manufacturer:

Other Similar products are found below :

[ESM6D044440C05AAQ](#) [FMD15.24G](#) [PSL486-7LR](#) [Q48T30020-NBB0](#) [JAHW100Y1](#) [SPB05C-12](#) [SQ24S15033-PS0S](#) [19-130041](#) [CE-1003](#)
[CE-1004](#) [GQ2541-7R](#) [RDS180245](#) [MAU228](#) [J80-0041NL](#) [DFC15U48D15](#) [XGS-0512](#) [XGS-1205](#) [XGS-1212](#) [XGS-2412](#) [XGS-2415](#) [XKS-](#)
[1215](#) [06322](#) [NCT1000N040R050B](#) [SPB05B-15](#) [SPB05C-15](#) [L-DA20](#) [DCG40-5G](#) [QME48T40033-PGB0](#) [XKS-2415](#) [XKS-2412](#) [XKS-2405](#)
[XKS-1212](#) [XKS-1205](#) [XKS-0515](#) [XKS-0505](#) [XGS-2405](#) [XGS-1215](#) [XGS-0515](#) [PS9Z-6RM4](#) [73-551-5038I](#) [AK1601-9RT](#) [VI-R5022-](#)
[EXWW](#) [PSC128-7iR](#) [RPS8-350ATX-XE](#) [DAS1004812](#) [VI-LJ11-iz](#) [PQA30-D24-S24-DH](#) [VI-M5F-CQ](#) [VI-LN2-EW](#) [VI-PJW01-CZY](#)