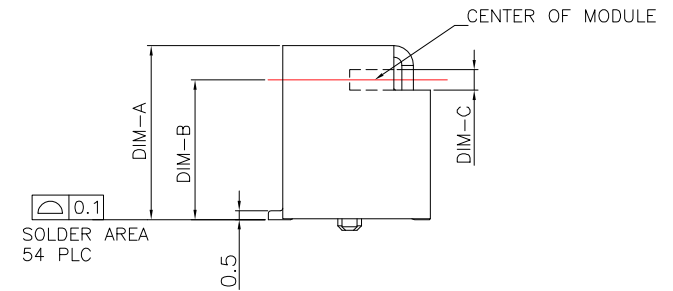
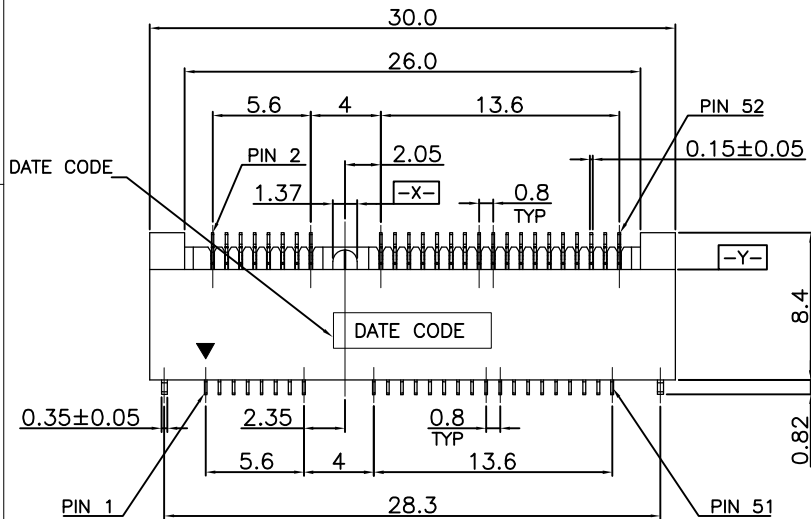




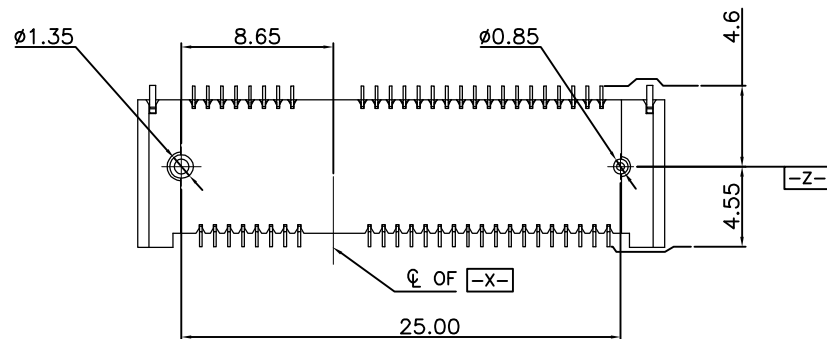
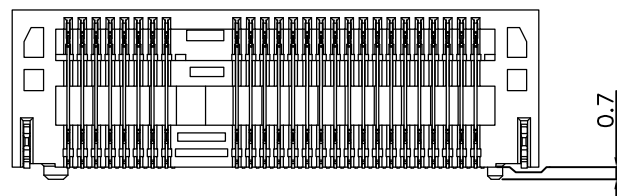
| REV. | ECN NO OR DESCRIPTION | REVISED | DATE |
|------|-----------------------|---------|------|
| | | | |
| | | | |



SPECIFICATION:

- ELECTRICAL**
 - Current Rating: 0.5A per pin
 - Voltage Rating: 50V DC
 - Contact Resistance: 5 5mΩ Max
 - Insulation Resistance: 500MΩ Min
 - Dielectric Withstanding Voltage: 300VAC
- MECHANICAL**
 - Durability: 100 Cycle
 - Insertion Force: 2.3Kgf max.
 - Extraction Force: 2.3Kgf max.
- ENVIRONMENTAL**
 - Operating temperature range: -40 °C~+85°C
 - Storage temperature range: -40 °C~+85°C
- SOLDER ABILITY**
 - Recommended IR Reflow Temperature: 260 °C 10Sec

| LTEM NO | DIM-A | DIM-B | DIM-C |
|---------|-------|--------|--------|
| | 4.0mm | 2.05mm | 1.12mm |
| | 5.2mm | 3.25mm | 1.12mm |
| | 5.6mm | 3.65mm | 1.12mm |
| | 7.0mm | 5.05mm | 1.12mm |
| | 8.0mm | 6.05mm | 1.16mm |
| | 9.0mm | 7.05mm | 1.16mm |
| | 9.9mm | 7.95mm | 1.16mm |

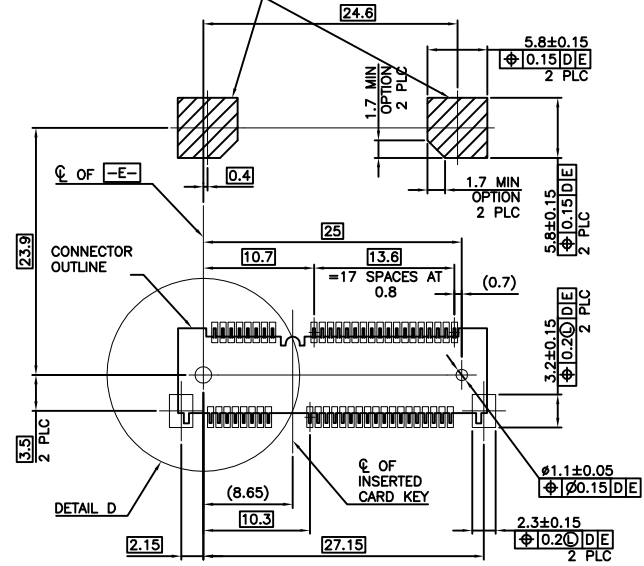


| | | | | |
|---------------------------------------|----------|---------|---------------------------|-------------|
| UNLESS OTHERWISE SPECIFIED TOLERANCES | | | | |
| DECIMALS: | ANGLES: | TITLE | mPCI -E 0.8mm P数: 52 | |
| X :±0.35 | X :±2° | DWN | PART NO. ZX-JSZ-W0.8525.6 | |
| X.X :±0.25 | X.X :±1° | CHKD | SCALE:1:1 | UNIT: mm |
| X.XX :±0.15 | | APVD | SIZE: A4 | SHEET:1OF 1 |
| | | REV: A4 | | |
| CUSTOMER COPY | | | | |

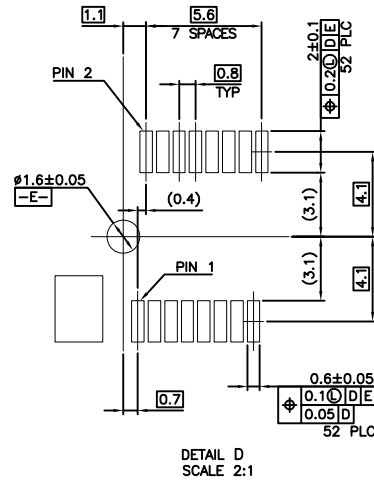


| REV. | ECN NO OR DESCRIPTION | REVISED | DATE |
|------|-----------------------|---------|------|
| | | | |
| | | | |

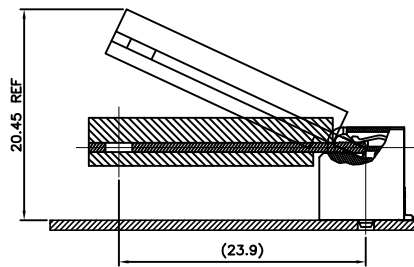
COMPONENT KEEP OUT AREA FOR CARD HOLD DOWN SOLUTION



-D- IS THE TOP SURFACE OF PCB.
RECOMMENDED P.C. BOARD PATTERN LAYOUT
FOR HALF CARD CONNECTOR
(TOP VIEW)

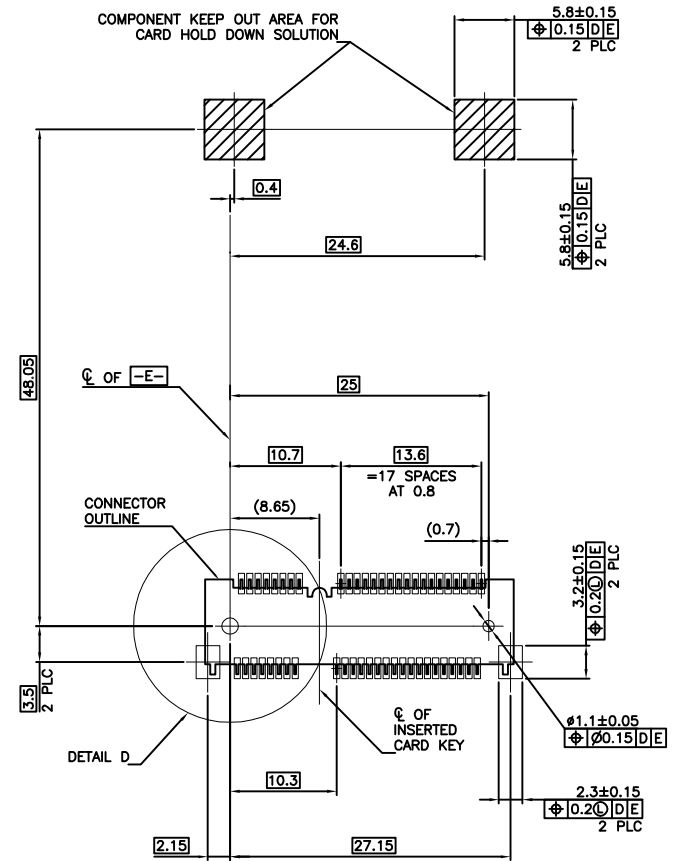


DETAIL D
SCALE 2:1

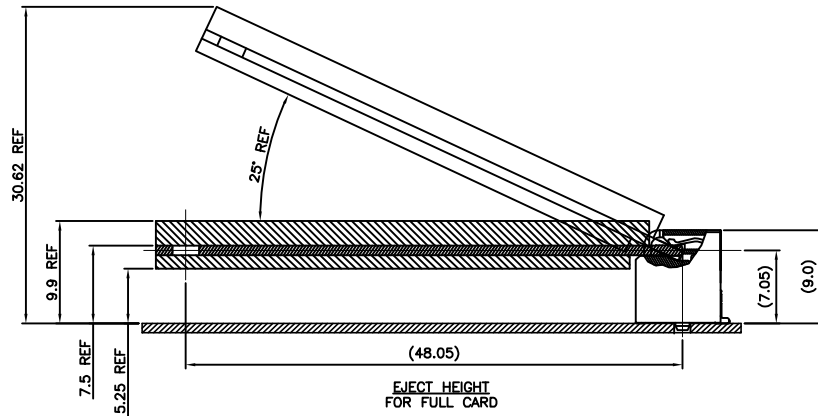


EJECT HEIGHT
FOR HALF CARD

COMPONENT KEEP OUT AREA FOR CARD HOLD DOWN SOLUTION



-D- IS THE TOP SURFACE OF PCB.
RECOMMENDED P.C. BOARD PATTERN LAYOUT
FOR FULL CARD CONNECTOR
(TOP VIEW)



EJECT HEIGHT
FOR FULL CARD

UNLESS OTHERWISE SPECIFIED TOLERANCES

| | |
|-------------|----------|
| DECIMALS: | ANGLES: |
| X :±0.35 | X :±2° |
| X.X :±0.25 | X.X :±1° |
| X.XX :±0.15 | |

兆星精密电子(深圳)有限公司

| | | | |
|-------|---------------------------|---------------|---------|
| TITLE | mPCI -E 0.8mm P数: 52 | | |
| DWN | PART NO. ZX-JSZ-W0.8525.6 | | |
| CHKD | SCALE: 1:1 | UNIT: mm | |
| APVD | SIZE: A4 | SHEET: 1 OF 1 | REV: A4 |

CUSTOMER COPY

X-ON Electronics

Largest Supplier of Electrical and Electronic Components

Click to view similar products for [Standard Card Edge Connectors](#) category:

Click to view products by [Megastar](#) manufacturer:

Other Similar products are found below :

[CR7E-30DB-3.96E\(72\)](#) [6565204-6](#) [1437274-4](#) [1-582587-1](#) [284-0102-12100](#) [286-0052-12101A](#) [306022901000000](#) [A6D22DS29C2](#) [1926088-2](#) [245-062-520-350](#) [287-0032-12101](#) [306-028-525-102](#) [307-072-526-202](#) [330-030-500-278](#) [345-060-559-303](#) [534671-1](#) [341-240-317](#) [345-044-500-300](#) [346-240-318](#) [C7D10DS29C1M133](#) [395-100-524-300](#) [09-07-2032](#) [10035388-802LF](#) [10115859-011LF](#) [10122859-009LF](#) [101269333204245CLF](#) [530555-1](#) [66925-516LF](#) [5145409-2](#) [73726-0005](#) [66308-1](#) [EBC05DRXN](#) [KSLX-62-BR](#) [CE100F26-7-C](#) [CE100F28-3-D](#) [CE100F28-4-D](#) [CE156F22-9-C](#) [CT100F24-3-D](#) [CT100F24-6-C](#) [MLSS100-12-C](#) [SCC100F-11-C](#) [SCC100F-20-C](#) [SCC100F-24-C](#) [SCC100F-25-C](#) [3-530656](#) [2512250177](#) [285-0112-12300](#) [346-068-556-300](#) [284-0492-11000](#) [287-0032-12301](#)