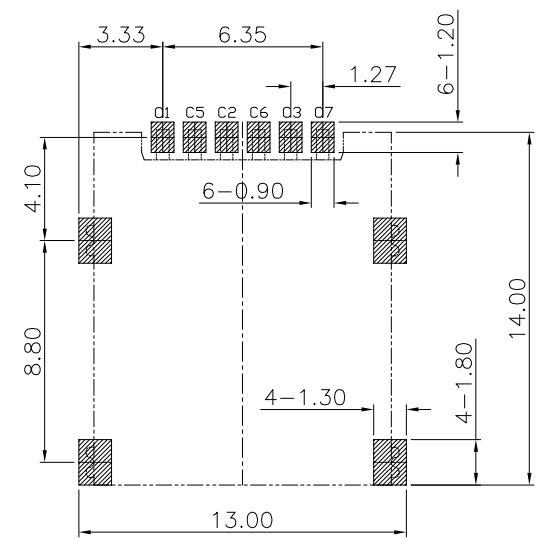
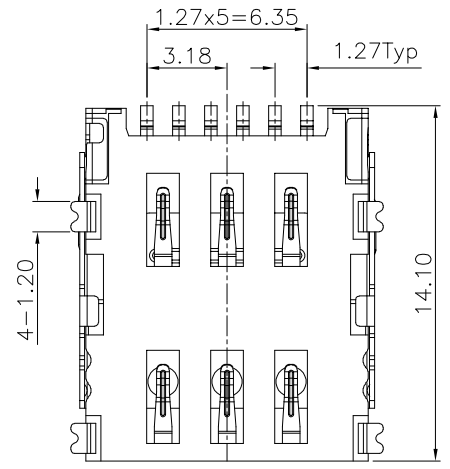
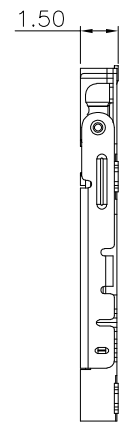
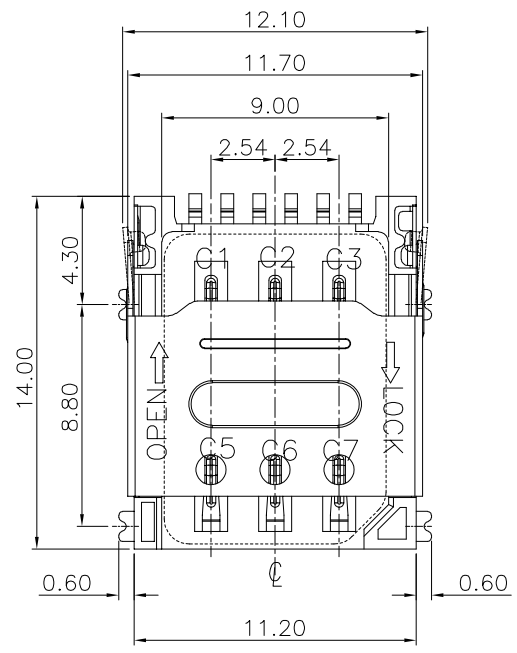
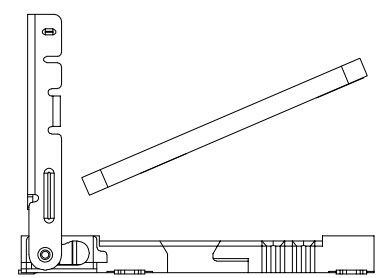
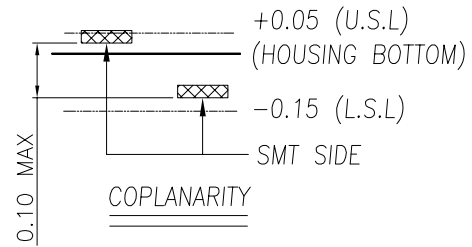


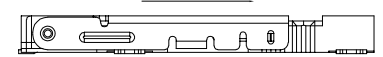
| Rev No. | Description of Revision | Date | Name | Approved | ECN No. |
|---------|-------------------------|------|------|----------|---------|
| ▲X | | | | | |



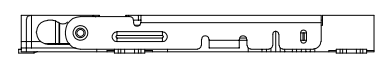
RECOMMENDED PCB LAYOUT
GENERAL TOLERANCE ±0.05



STEP 1 INSERT Micro-SIM CARD

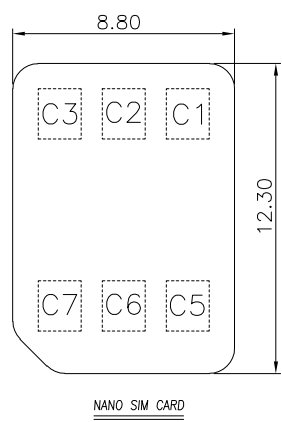


STEP 2 PUSH THE SHELL



STEP 3 FINISH

| SIM CARD | |
|----------|------|
| Pin No. | NAME |
| C1 | VCC |
| C2 | RST |
| C3 | CLK |
| C5 | GND |
| C6 | VPP |
| C7 | I/O |



NANO SIM CARD

NOTES:

- ELECTRICAL CHARACTERISTICS
 - CONTACT RESISTANCE: 60 Milliohms Max
 - INSULATION RESISTANCE: 1,000 Megohms Min.
 - VOLTAGE RATING: 50V.
 - CURRENT RATING: 1.0A.
- MECHANICAL CHARACTERISTICS
 - OPERATION TEMPERATURE RANGE: -20°C~+85°C
 - DURABILITY: 5000 CYCLES
- MATERIAL:
 - HOUSING: THERMOPLASTIC,UL 94-V0
 - TERMINAL: PHOSPHOR BRONZE,T=0.15
 - SHELL: STAINLESS STEEL,T=0.20
- FINISHED:
 - TERMINAL: Ni PLATED UNDER, 3U" Au MIN PLATED ON CONTACT AREA,AU PLATED ON SOLDER TAIL

| | | | | | |
|---------------------------------------|-------------|------------------------|-------------|----------------|--------|
| UNLESS OTHERWISE SPECIFIED TOLERANCES | | | | | |
| | | TITLE: 翻盖式 NanoSIM卡 卡座 | | | |
| DECIMALS: | ANGLES | Drawn. | PART NO | ZX-NSIM-281.4J | |
| X. ±0.20 | X°. ±2° | Checked. | SCALE: 3:10 | UNIT: mm | PROJ. |
| X.X ±0.15 | X.X° ±1° | Approved. | SIZE: A4 | SHEET: 1 OF 1 | REV. A |
| X.XX ±0.10 | X.XX° ±0.5° | | | | |
| X.XXX ±0.05 | | CUSTOMER COPY | | | |

X-ON Electronics

Largest Supplier of Electrical and Electronic Components

Click to view similar products for [Memory Card Connectors](#) category:

Click to view products by [Megastar](#) manufacturer:

Other Similar products are found below :

[6407-249V-25273P](#) [6407-249V-25343P](#) [6426-201-21343](#) [69.920.0553.0](#) [MCR60A-98D-2.54DSA\(70\)](#) [809180410000000](#) [DM3AT-SF-PEJM5\(41\)](#) [IC11S-BUR-PNEJL\(71\)](#) [C70210M0083692](#) [2041353-2](#) [308-DS1P0811-192](#) [HM2P09PDR360N9LF](#) [10014744-011TLF](#) [11327-001](#) [11327-002](#) [NX1-32T-KT3K\(05\)](#) [95622-003LF](#) [84648-056HLF](#) [CCM03-3109 B LFT](#) [MS3116J10-6PW](#) [2309923-1](#) [61126-050CAHLF](#) [GTFP08432B1HR](#) [G85D1160022HHR](#) [SCE2MSDZN76A121SN](#) [10014744-011ALF](#) [10014744-011LF](#) [10057542-1211FLF](#) [10067972-000LF](#) [10067972-050LF](#) [10122302-20110LF](#) [G85D1162022HHR](#) [TF-05A](#) [M6014-12](#) [XKNANO-1412](#) [SMN-304-ARP6](#) [MIS11-S1F1-2000-A](#) [SMN-308-ARSP7](#) [MCS-302S-KT1B](#) [SMN-308-ACSP7](#) [K-DYX-008](#) [K-DYX-004](#) [HYCW126-TF18-150B](#) [C7024-03](#) [SMO-1030](#) [MCS-110-KT](#) [SIM-217](#) [SNO-1355-KT](#) [SMO-1025-P10](#) [SIM-211S-P6](#)