

MEGLADON[®]

MANUFACTURING GROUP, LTD

A TyRex Technology Family Company



MPO / MTP[®] Patch Cables

The Megladon Difference

Megladon manufactures **MPO/MTP Patch Cables** to the highest standards, and utilizes the highest quality materials the industry has to offer. All cables are fully tested to exceed industry performance and geometry standards. Our MPO / MTP cables are designed to support high-density deployments, and compliment our other MPO / MTP distribution products.

For more information on Megladon's HLC[®] process and products, please visit megladonmfg.com.

KEY BENEFITS

- ✓ Factory-Terminated Solution provides highest level of performance and reliability
- ✓ Cables utilize the highest quality components from industry leaders
- ✓ Pre-Configured Cables help save Installation Time and Costs

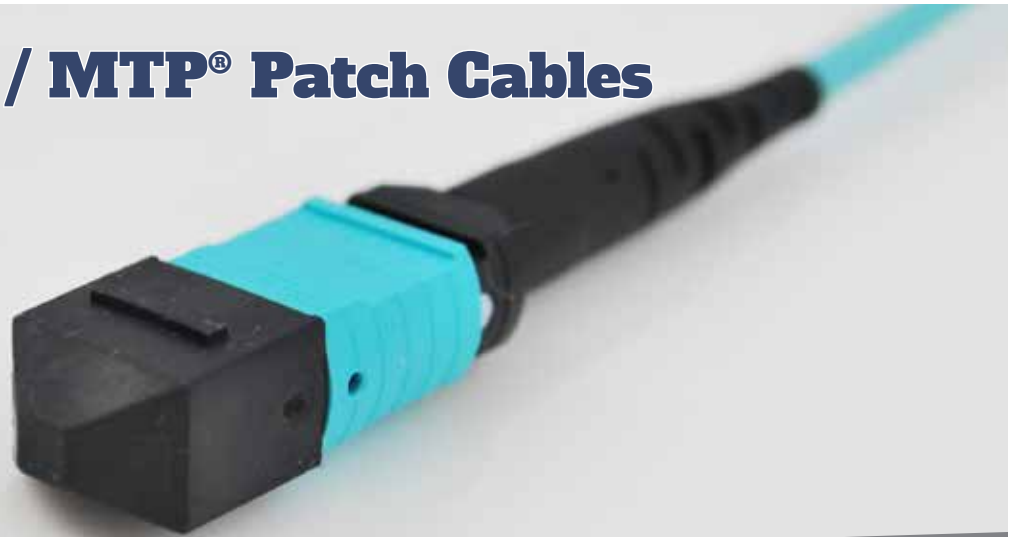
APPLICATIONS

- ▶ Backbone Installations
- ▶ Horizontal Cabling
- ▶ Cross Connects
- ▶ Data Centers



MEGLADON MANUFACTURING GROUP, LTD.
CERTIFIED TO ISO 9001:2015
CERTIFICATE NO. 1092256

MPO / MTP® Patch Cables



FEATURES

- ▶ Available with Standard or Elite, 12 or 24 Fiber MPO / MTP Connector Options
- ▶ Riser, Plenum, LSZH Jacket Options
- ▶ Ribbon and 3mm Round Jacket Options, custom length
- ▶ All common SM and MM Fibers available
- ▶ MTP® is a registered trademark of USConec

PERFORMANCE CHARACTERISTICS

Megladon MPO / MTP Patch Cables			
<i>Singlemode MPO / MTP Standard</i>			
	<i>Typical</i>	<i>Max</i>	<i>Units</i>
Insertion Loss (APC, 8 deg.)	0.25	0.5	dB
Reflectance (APC, 8 deg.)		-55	dB

Megladon MPO / MTP Patch Cables			
<i>Multimode MPO / MTP Standard</i>			
	<i>Typical</i>	<i>Max</i>	<i>Units</i>
Insertion Loss	0.2	0.5	dB
Reflectance		-20	dB

Megladon MPO / MTP Patch Cables			
<i>Singlemode MTP Elite</i>			
	<i>Typical</i>	<i>Max</i>	<i>Units</i>
Insertion Loss (APC, 8 deg.)	0.1	0.35	dB
Reflectance (APC, 8 deg.)		-55	dB

Megladon MPO / MTP Patch Cables			
<i>Multimode MTP Elite</i>			
	<i>Typical</i>	<i>Max</i>	<i>Units</i>
Insertion Loss	0.1	0.35	dB
Reflectance		-20	dB

MEGLADON®
MANUFACTURING GROUP, LTD

Your Fiber Optic Solutions Partner • Reliable - Rugged - Repeatable

12317 Technology Blvd., Ste. 100 • Austin, Texas • (512) 491-0006 • megladonmfg.com

X-ON Electronics

Largest Supplier of Electrical and Electronic Components

Click to view similar products for [Fibre Optic Cable Assemblies](#) category:

Click to view products by [Megladon Manufacturing](#) manufacturer:

Other Similar products are found below :

[7-21002-9](#) [760-1518](#) [FA04390-50-M-72-LC-N](#) [MLB 501 V RED](#) [MLB 501 V YELLOW](#) [1-3636-600-5208](#) [2061529-7](#) [1-6693182-0](#)
[1754898-1](#) [21055-6](#) [FXBSCSCE2LM002](#) [3000005](#) [3-21053-2](#) [MLB 2001 V RED](#) [MLB 2001 V YELLOW](#) [MLB 501 V BLACK](#) [5492011-6](#)
[106284-7000](#) [5492011-5](#) [5492011-8](#) [5492011-9](#) [8-21007-5](#) [2123524-2](#) [2123524-1](#) [106386-4447](#) [DFSM-SCSC-2M](#) [2123909-4](#) [2123909-8](#)
[106273-0629](#) [2125046-1](#) [2821236-3](#) [2821310-2](#) [2821310-3](#) [2821313-4](#) [FX2ERLNLNSNM0.5](#) [CF-980062-074](#) [CF-901200-394](#) [CF-980062-](#)
[073](#) [CF-980062-071](#) [CF-980062-075](#) [CF-980062-072](#) [17-300310-100](#) [2821236-2](#) [2821313-1](#) [G-FC-FC-S-002.0-DX-A-18-Y](#) [G-E2A-E2A-S-](#)
[003.0-SX-A-18-Y](#) [956-322-502214](#) [FA04474](#) [1083665](#) [1111540](#)