



MeiG Smart SLM770A Module






LTE Cat.4 Module With Mini PCIe Packaging

SLM770A is the latest LTE Cat.4 wireless communication module launched by MeiG Smart Technology Co., Ltd, which supports the maximum downlink rate of 150Mbps and uplink rate of 50Mbps. It is compatible with existing 3G and 2G networks to ensure network communication even in remote areas.

SLM770A module is developed based on ASR1803 platform, compatible with SLM750/SLM790/SLM320 module in package.

SLM770A module support diversity reception and MIMO technology, optimize the speed of data transmission and improve the communication quality. Support the sliding NCM/PPP/ECM/TCP/UDP/DTSL/HTTP(s)/FTP/MQTT dialing a variety of ways and built-in network protocol. Integrated UART/I2C/PCM/SPI/SDIO and other rich hardware interface. Widely used in industrial routing, security monitoring, CPE, vehicle DVR, sharing and other field.

Product Features:

-  Covers LTE-FDD/LTE-TDD/WCDMA/EDGE/GPRS/GSM networks
-  Support variety of voice coding (HR/FR/EFR/AMR/AMR-WB), support SRLTE/CSFB/VOLTE
-  Supports high-speed USB2.0 interfaces
-  Commonly used LCC package interface, strong versatility, release users to the traditional industry products quickly access the network
-  Supports TCP/UDP/DTLS/HTTP(S)/FTP/MQTT and other built-in protocol stack functions



LTE



PCM



Multiple OS Compatibility



PCIe



USB Port



MIMO



Embedded



-40°C-85°C

MeiG Smart SLM770A Module

LTE Cat.4 Module With Mini PCIe Packaging

General Features:

- Packaging: Mini-PCIe Packaging (52pin)
- Size: 51.0×30.0×5.2mm
- Weight: < 9.0g

Module Rate:

- LTE-FDD (Cat.4): Max 75Mbps(DL)/50Mbps(UL)
- LTE-TDD (Cat.4): Max 65Mbps(DL)/35Mbps(UL)
- DC-HSPA+: Max 42Mbps(DL)/5.76Mbps(UL)
- WCDMA: Max 384kbps(DL)/384kbps(UL)
- EDGE: Max 236.8kbps(DL)/236.8kbps(UL)
- GPRS: Max 85.6kbps(DL)/85.6kbps(UL)

Drivers & Tools:

- Drivers: Window series, Linux 2.6 or above, Android 4.0 or above
- Tools: One-click upgrade tool
- Upgrade: USB/FOTA upgrade

Protocols:

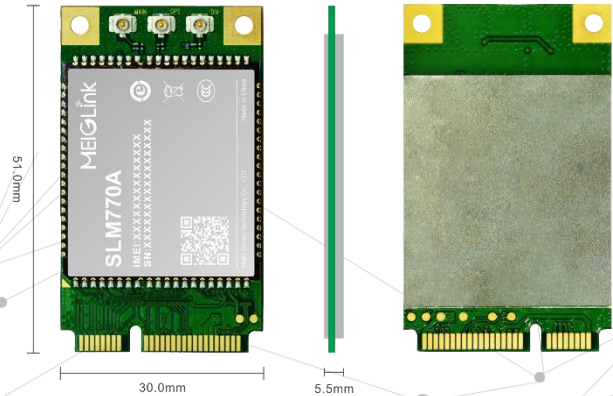
- PPP/ECM/TCP/UDP/DTLS/HTTP(s)/FTP/MQTT/DTMF*

Interfaces:

- USB2.0 1
- SIM Card interface (1.8 / 3.0V)
- PCM
- UART*2
- Antenna interface: Master/Diversity(optional)/GNSS (optional)

Certification:

- CCC/CTA/SRRC/CE



Working Environment:

- Temperature range: -40°C~+85°C (-40°C~-30°C, +75°C~85°C for the extended temperature range, some RF indicators will deteriorate)
- Storage Temperature: -45°C ~ +90°C
- Humidity: 5%~95%

Transmission Power:

- GSM850/900 33±2dBm, GSM1800/1900 30±2dBm, WCDMA/HSPA 23+1/-3dBm, LTE-TDD 23±2.7dBm, LTE-FDD 23±2.7dBm

Electrical Characteristics:

- 10uA@shutdown
- 3mA@sleep
- 30mA@free
- Supply voltage:3.3V~4.2V, typical value 3.8V

Band Description of SLM770A:

PID	Frequencies	RX Diversity	GNSS
SLM770A-CA MiniPCIe	LTE-FDD:B1/B3/B5/B8 LTE-TDD:B34/B38/B39/B40/B41 WCDMA:B1/B8 GSM:900/1800	Support	Support
SLM770A-CB MiniPCIe	LTE-FDD:B1/B3/B5/B8 LTE-TDD:B34/B38/B39/B40/B41 WCDMA:B1/B8 GSM:900/1800	Support	No support
SLM770A-CC MiniPCIe	LTE-FDD:B1/B3/B5/B8 LTE-TDD:B34/B38/B39/B40/B41 WCDMA:B1/B8 GSM:900/1800	No support	No support
SLM770A-CE MiniPCIe	LTE-FDD:B1/B3/B5/B7/B8/B20/B28 LTE-TDD:B38/B40/B41 WCDMA:B1/B8 GSM:900/1800	Support	Optional

Remarks: *In research and development.

MeiG Smart Technology Co.,Ltd
A Global Leading Supplier of Cellular Modules and Solutions

Add: 32/F, Building B, Shenzhen International Innovation Center,
No. 1006 Shennan Avenue, Futian District, Shenzhen, China

E-mail: ir@meigsmart.com
Tel: +86-755-83218588

Fax: +86-755-83219788
Web: www.meigsmart.com



MeiG Official Wechat QR Code

X-ON Electronics

Largest Supplier of Electrical and Electronic Components

Click to view similar products for [MEIG](#) manufacturer:

Other Similar products are found below :

[750VE71S](#) [770ACE4A](#) [770ACE4C](#) [M156LA0A](#) [M320PE1A](#) [M320PE2C](#) [M320PMPM](#) [M326E00A](#) [M326LZBA](#) [M336QE1B](#) [M750ZE1A](#)
[M815N44A](#) [M815NEVB](#) [M825N45A](#) [M825W5GH](#) [M82824AA](#) [M828G23B](#) [M828G23D](#) [M828GEVB](#) [MPEVB00B](#) [NBEVB00A](#)
[VE71SMPR](#) [ZE1AMP1B](#)