



MeiG Smart SLM750 Module

LTE Cat.1 Module With MiniPCle Packaging

MeiG Smart SLM750 series of M2M modules are designed to provide customers with wireless communication service. It covers three operators' network in domestic and the main operators's network of the world. It delivers maximum 10Mbps-DL and 5Mbps-UL data rates on LTE networks, and has backward compatibility with 3G and 2G networks to ensure that network communication is working in remote areas.

Rx diversity and MIMO technology is provided to improve communication quality and optimize data transmission rate; high-sensitivity GNSS function is also provided.

A rich set of protocols (TCP/FTP/HTTP) and multiple OS compatibility extend the applicability of the module to a wide range of M2M applications.

Key Technologies:

- Cover LTE-FDD/LTE-TDD/WCDMA/TD-SCDMA/EDGE/GPRS/GSM/EVDO&CDMA 1x networks
- Qualcomm® IZat™ Gen 8C engine, Support GPS/GLONASS/BeiDou/Galileo
- Support Voice Codec (HR/FR/EFR/AMR/AMR-WB), Support SRLTE/CSFB/VOLTE (optional)
- USB2.0 High Speed Interface
- Rx Diversity and MIMO Technology
- TCP/IP Embedded Protocol Stacks



LTE



PCM



Multiple OS Compatibility



MIMO



USB Port



GNSS



Embedded TCP/IP



-40°C-85°C

MeiG Smart SLM750 Module

LTE Cat.1 MiniPCle Packaging

General Features:

- ▣ Package: MiniPCle (52Pin)
- ▣ Size: 51.0×30.0×5.5mm
- ▣ Weight: About 11.5g

Data Features:

- ▣ LTE-FDD (Cat.1): Max 10Mbps(DL)/5Mbps(UL)
- ▣ LTE-TDD (Cat.1): Max 8.96Mbps(DL)/3.1Mbps(UL)
- ▣ DC-HSPA+:Max 42Mbps(DL)/5.76Mbps(UL)
- ▣ TD-SCDMA:Max 4.2Mbps(DL)/2.2Mbps(UL)
- ▣ WCDMA:Max 384kbps(DL)/384kbps(UL)
- ▣ EDGE:Max 236.8kbps(DL)/236.8kbps(UL)
- ▣ GPRS:Max 85.6kbps(DL)/85.6kbps(UL)
- ▣ EVDO RevA:Max 3.1Mbps(DL)/1.8Mbps(UL)
- ▣ CDMA1x:Max 153.6kbps(DL)/153.6kbps(UL)

Working Environment:

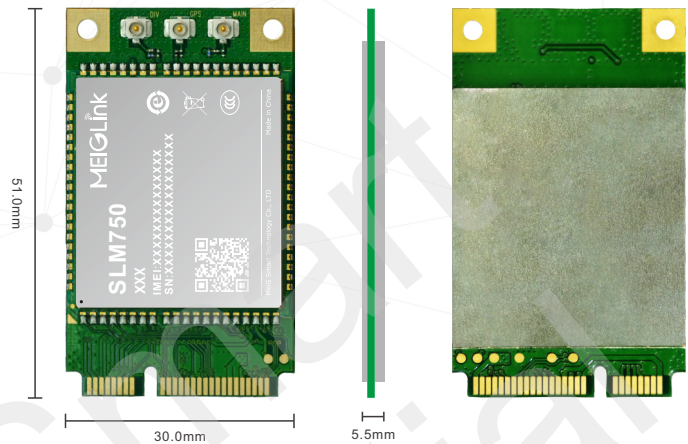
- ▣ Restrict Working Temperature: -40°C to 85°C
- ▣ Storage Temperature: -45°C to 90°C
- ▣ Humidity : 5%~95%

Drivers & Tools:

- ▣ Drivers : Windows XP, Windows Vista, Windows 7, Windows 8, Windows 8.1, Windows 10, Linux, Android
- ▣ Tools : One Click update tool, Gobinet Dial Tool
- ▣ *FOTA Update (Developing)

Interfaces:

- ▣ High speed USB 2.0
- ▣ Reset
- ▣ UART*2
- ▣ SIM card Interface(1.8 / 3.0V)
- ▣ Antenna Interface: Main/Diversity/GNSS (Optional)
- ▣ I2C
- ▣ LED indicator
- ▣ PCM
- ▣ WAKEUP-IN & WAKEUP-OUT
- ▣ Fly Mode



Transmit Power:

- ▣ GSM850/900 33±2dBm
- ▣ GSM1800/1900 30±2dBm
- ▣ CDMA/EVDO 23~30dBm
- ▣ WCDMA/HSPA 23+1/-3dBm
- ▣ TD-SCDMA 23+1/-3dBm
- ▣ LTE-TDD 23±2.7dBm
- ▣ LTE-FDD 23±2.7dBm

Protocols:

- ▣ TCP/UDP/HTTP(S)/FTP(S)/PPP/PING/DTMF/QMI/MQTT/SSL

Authentication information:

- ▣ CCC/SRRC/CTA/CE/FCC/ROHS/KC/JATE/TELEC/NCM/NCC

Band Description of SLM750 MiniPCle:

PID	Frequencies	RX Diversity	GNSS	PCM/Analog voice
SLM750-ZE MiniPCle	LTE-FDD: B1/3/5/7/8/20 LTE-TDD: B40 WCDMA: B1/5/8 GSM: 900/1800	Yes	Yes	Yes/Optional
SLM750-ZA MiniPCle	LTE-FDD: B2/4/5/12/13/17/18/25/26 LTE-TDD: B41 WCDMA: B2/4/5 CDMA&EVDO: BC0/BC1 GSM: 850/1900	Yes	Yes/Optional	Yes/Optional
SLM750-ZAU MiniPCle	LTE-FDD: B1/3/5/7/8/28 LTE-TDD: B40 WCDMA: B1/5/8 GSM: 850/900/1800	Yes	Yes/Optional	Yes/Optional
SLM750-ZSA MiniPCle	LTE-FDD: B2/4/5/7/8/28 LTE-TDD: B40 WCDMA: B2/5/8 GSM: 850/900/1900	Yes	Yes/Optional	Yes/Optional
SLM750-ZJ MiniPCle	LTE-FDD: B1/3/8/18/19/26 LTE-TDD: B41 WCDMA: B1/6/8/19	Yes	Yes/Optional	Yes/Optional



X-ON Electronics

Largest Supplier of Electrical and Electronic Components

Click to view similar products for [MEIG](#) manufacturer:

Other Similar products are found below :

[M815NEVB](#) [M326LZBA](#) [NBEVB00A](#) [M825W5GH](#) [M828GEVB](#) [M825N45A](#) [ZE1AMP1B](#) [MPEVB00B](#) [M336QE1B](#) [M815N44A](#)
[VE71SMPR](#) [M82824AA](#) [770ACE4C](#) [M320PMPM](#) [M828G23D](#) [M828G23B](#) [M326E00A](#) [M320PE1A](#) [750VE71S](#) [M156LA0A](#) [M750ZE1A](#)
[770ACE4A](#) [M320PE2C](#)