

# SPECIFICATIONS

---



---

Customer : \_\_\_\_\_

Customer P/N: \_\_\_\_\_ ACM-  Series

Drawing No : \_\_\_\_\_

Quantity : 0 Pcs. Date : 2017/09/06

Chilisin P/N : \_\_\_\_\_ ACM-  Series/参照

<b>SPECIFICATION</b>	
<b>ACCEPTED BY:</b>	
<b>COMPONENT ENGINEER</b>	
<b>ELECTRICAL ENGINEER</b>	
<b>MECHANICAL ENGINEER</b>	
<b>APPROVED</b>	
<b>REJECTED</b>	

**For Customer approval Only**

Qualification Status:     Full     Restricted     Rejected

Approved By	Verified By	Re-checked By	Checked By

Comments: \_\_\_\_\_

**Meled Electronics Co., Ltd.**

www.meledinc.com

---



---

### Version change history

Rev.	Effective Date	Changed Contents	Change Reasons	Approved By
01	/	New release	/	/

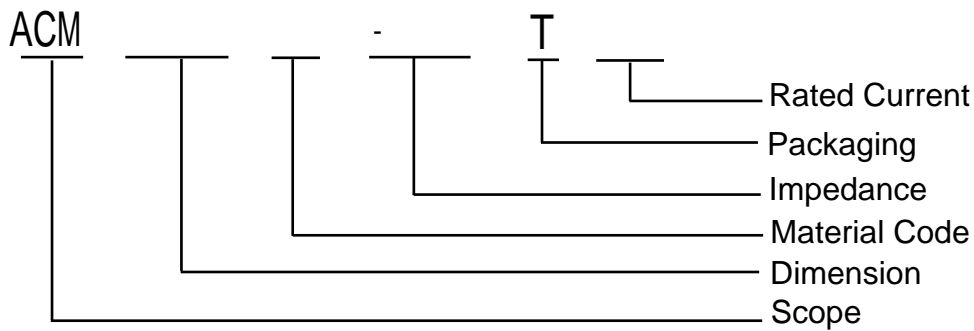
### 1. Features

1. High common mode impedance at high frequency cause excellent noise suppression performance.
2. ACM series realizes small size and low profile.
3. 100% Lead(Pb) & Halogen-Free and RoHS compliant.
4. Operating temperature-40~+125°C (Including self - temperature rise)

### 2.APPLICATIONS

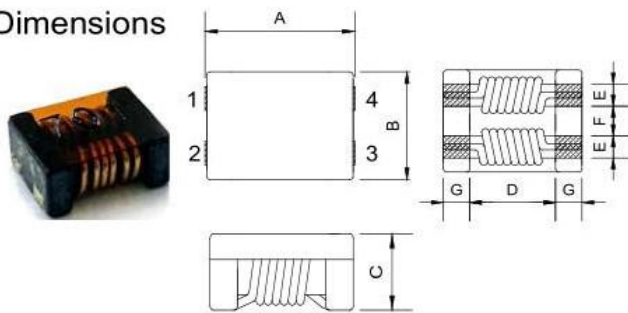
- USB2.0 of IEEE1394, PC, peripheral equipments, small digital AV equipments, etc.
- LVDS lines of Note PC, LCD
- Audio lines

### 3 PRODUCT IDENTIFICATION



### 4. ShapeandDimensions

#### ■ Dimensions



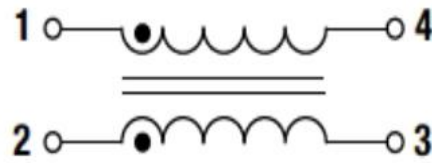
Dimensions	unit: mm
A	7.00±0.50
B	6.00±0.50
C	3.80 MAX
D	3.50 TYP.
E	1.50±0.50
F	1.50±0.50
G	1.70±0.50

[Table 4-1]

Unit: mm [inch]

Part Number	A	B	C	D	E	F	G
ACM4520	4.7±0.5	4.5±0.5	2.0 Max	2.7 Ref	0.7±0.2	1.2±0.2	1.0±0.2
ACM7060	7.0±0.5	6.0±0.5	3.8 Max	3.5 Ref	1.5±0.2	1.5±0.2	1.75±0.2
ACM9070	9.0±0.5	7.0±0.5	4.8 Max	5.7 Ref	1.5±0.2	2.0±0.2	1.70±0.2
ACM1211	12.0±0.5	10.8±0.5	6.4 Max	7.0 Ref	2.7±0.2	2.5±0.2	2.50±0.2
ACM1513	15.0±0.5	13.0±0.5	6.0 Max	10.4 Ref	2.7±0.2	3.8±0.2	2.30±0.2

## 5. Circuit Diagram



### Appendix A: Electrical Characteristics

#### I. ACM4520 Series Common Mode Filter

Part Number	Z( $\Omega$ ) at 100MHz		DCR Max. (m $\Omega$ )	I <sub>rated.</sub> (A)	IR (M $\Omega$ ) Min	Rated Voltage (V) Max
	Min	Typ.				
ACM4520□-301T30	100	300	45	3.0	10	50
ACM4520□-401T25	200	400	50	2.5	10	50
ACM4520□-701T22	500	700	59	2.2	10	50
ACM4520□-901T21	700	900	68	2.1	10	50
ACM4520□-102T21	800	1000	68	2.1	10	50
ACM4520□-122T20	1000	1200	74	2.0	10	50
ACM4520□-142T19	1200	1400	81	1.9	10	50

#### II. ACM7060 Series Common Mode Filter

Part Number	Z( $\Omega$ ) at 100MHz		DCR Max. (m $\Omega$ )	I <sub>rated.</sub> (A)	IR (M $\Omega$ ) Min	Rated Voltage (V) Max
	Min	Typ.				
ACM7060□-400T150	40	70	5	15.0	10	125
ACM7060□-101T90	100	140	10	9.0	10	125
ACM7060□-301T50	225	300	10	5.0	10	125
ACM7060□-501T50	275	350	10	5.0	10	125
ACM7060□-701T40	500	700	15	4.0	10	125
ACM7060□-102T30	800	1020	17	3.0	10	125
ACM7060□-132T25	910	1300	21	2.5	10	80
ACM7060□-272T10	2000	2700	63	1.0	10	125
ACM7060□-302T09	2500	3000	75	0.9	10	125

### III. ACM9070 Series Common Mode Filter

Part Number	Z( $\Omega$ ) at 100MHz		DCR Max. (m $\Omega$ )	I <sub>rated</sub> .(A)	IR (M $\Omega$ ) Min	Rated Voltage (V) Max
	Min	Typ.				
ACM9070□-301T60	225	300	6	6.0	10	50
ACM9070□-501T55	450	600	8	5.5	10	50
ACM9070□-701T50	500	700	10	5.0	10	50
ACM9070□-102T40	750	1000	13	4.0	10	50
ACM9070□-222T25	1700	2200	60	2.5	10	50

### IV. ACM1211 Series Common Mode Filter

Part Number	Z( $\Omega$ ) at 100MHz		DCR Max. (m $\Omega$ )	I <sub>rated</sub> .(A)	IR (M $\Omega$ ) Min	Rated Voltage (V) Max
	Min	Typ.				
ACM1211□-800T100	80	230	2.0	10.0	10	125
ACM1211□-701T80	500	700	6.0	8.0	10	125
ACM1211□-801T80	600	800	8.0	8.0	10	125
ACM1211□-102T60	750	1000	14.0	6.0	10	125
ACM1211□-222T18	2200	2500	35.0	1.8	10	125
ACM1211□-272T15	2300	2700	50.0	1.5	10	125

### IV. ACM1513 Series Common Mode Filter

Part Number	Z( $\Omega$ ) at 100MHz		DCR Max. (m $\Omega$ )	I <sub>rated</sub> .(A)	IR (M $\Omega$ ) Min	Rated Voltage (V) Max
	Min	Typ.				
ACM1513□-301T130	250	300	5	13.0	10	80
ACM1513□-551T100	450	550	6	10.5	10	80
ACM1513□-701T100	500	700	7	10.0	10	80
ACM1513□-152T100	1100	1500	9	10.0	10	80

Products with other electrical characteristic can be provided upon customer's request. Please contact your local sales.

[www.meledinc.com](http://www.meledinc.com)

## X-ON Electronics

Largest Supplier of Electrical and Electronic Components

*Click to view similar products for [Common Mode Chokes / Filters](#) category:*

*Click to view products by [Meled](#) manufacturer:*

Other Similar products are found below :

[74279408](#) [PE-62911NL](#) [PE-64683](#) [RD5122-6-9M6](#) [RGCMF1210900H3T](#) [ST6118T-R](#) [FE3X025-10-7NL](#) [T8114NLT](#) [RD5122-10-6M0](#)  
[TCM0806G-350-2P-T](#) [TCM0806G-650-2P-T](#) [IND-0110](#) [UAL21VR0802000](#) [UALSC023000000](#) [UALSC1020JH000](#) [UALSC1520JH000](#)  
[UALSU10VR15019](#) [UALSU9VD070100](#) [36-00037](#) [5701610000](#) [UALW21HS200290](#) [UALW21HS072450](#) [UALSU9HF050500](#)  
[UALSU9H0208000](#) [UAL24VK06450CH](#) [PLT10HH501100PNB](#) [PLT10HH401100PNB](#) [PLT10HH1026R0PNB](#) [PE-67531](#) [TLH10UB 113](#)  
[OR5](#) [2752045447](#) [CMS3-11-R](#) [7351V](#) [7408-RC](#) [CMF16-153131](#) [744252510](#) [T8116NLT](#) [CMS2-10-R](#) [DLW44SN101SK2L](#) [FE2X10-4-2NL](#)  
[744253200](#) [744253101](#) [744252220](#) [TX8111NLT](#) [UAL30VR3500470](#) [CTX01-19077-R](#) [T8003NLT](#) [CTX01-13663](#) [CTX66-19521-R](#)  
[7446630047](#)