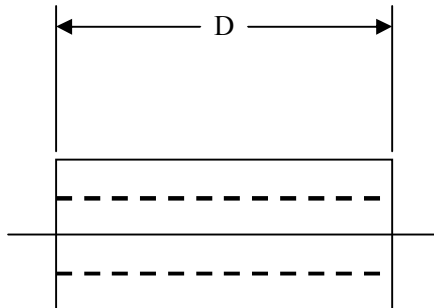
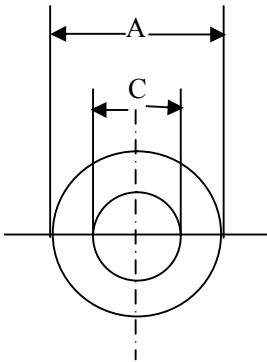


ITEM	SR71 ML 3.5*6.0*0.8TAPING
PART NO.	
ELECTRICAL REQUIREMENTS	IMPEDANCE Z:60 MIN OHM(100MHZ)

### TEST MEHOD

APPEARANCE STANDARD	VISION
INSPECTION LEVEL	MIL-SID-105D AQL=0.1
CHARACT&SIZE	LEVEL S-3
SURFACE	LEVEL II
TEST EQUIPMENT	HP-4191A
TEST FREQUENCY	100MHZ
COIL SPEC	

### DIMENSION (UNIT:mm)



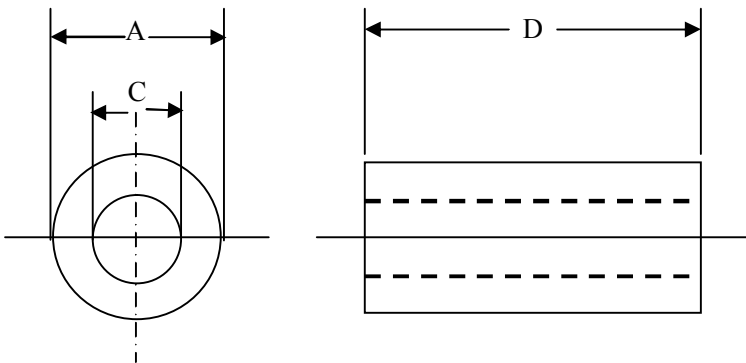
$$A=3.50 \pm 0.20\text{m/m}$$

$$C=0.80 \pm 0.20\text{m/m}$$

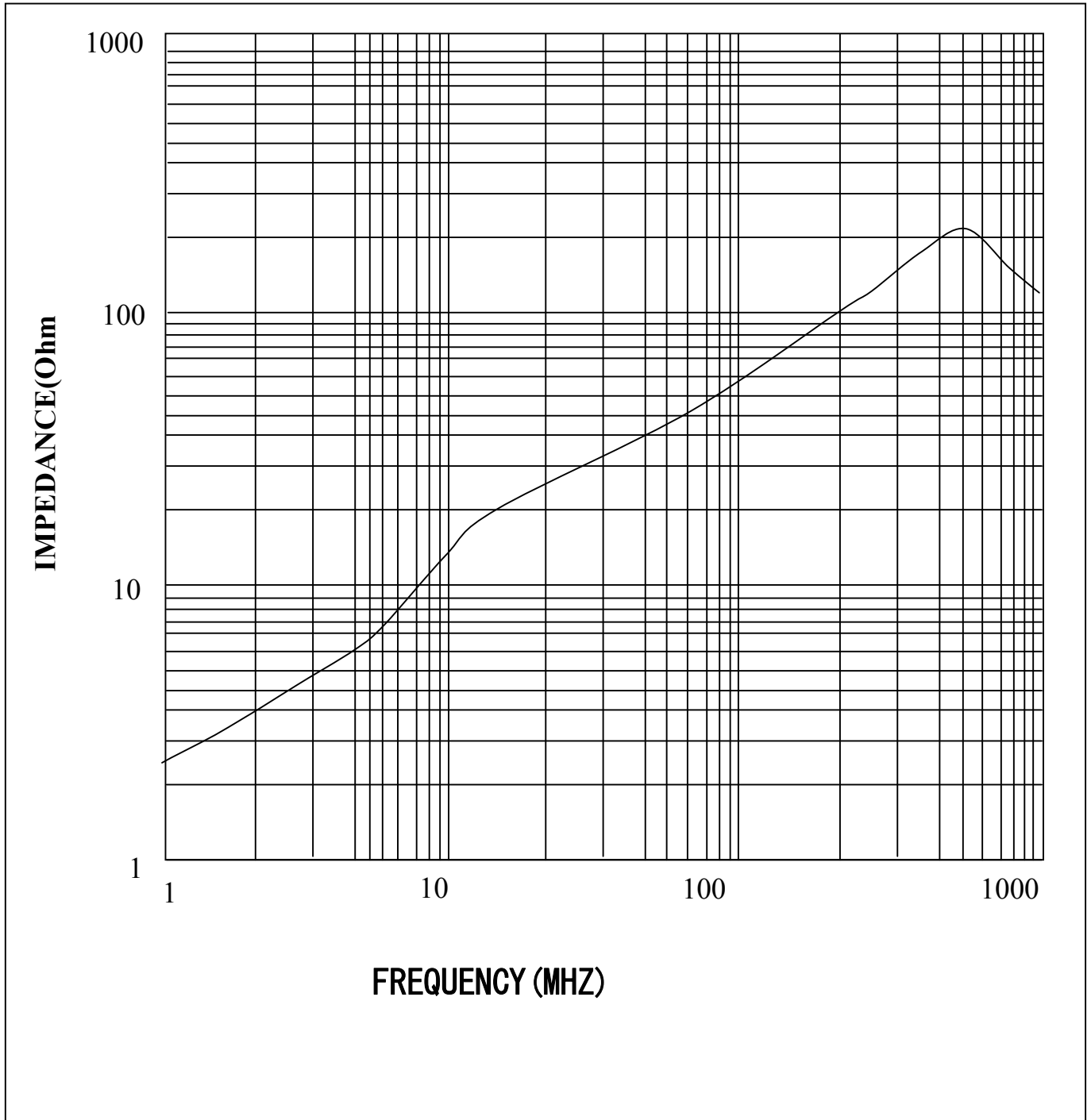
$$D=6.00 \pm 0.20\text{m/m}$$

## TEST DATA

CUSTOMER		QUANTITY							
ITEM	ML 3.5*6.0*0.8 TAPING	COIL SPEC							
PART NO.		TEST FREQUENCY	100MHZ						
HUMIDITY	63%	TEST EQUIPMENT	HP-4191A						
TEMPERATURE	23°C								
	TESTRESOLUTION		DIMENSION(UNIT:mm)						
	Z MHZ	Z MHZ	Z 100MHZ	A	B	C	D	E	F
SPEC	$\Omega$ MIN	$\Omega$ MIN	60 $\Omega$ MIN	3.50 $\pm 0.20$		0.80 $\pm 0.20$	6.00 $\pm 0.20$		
1			78	3.51		0.80	5.98		
2			76	3.50		0.85	6.00		
3			78	3.48		0.88	6.00		
4			81	3.56		0.90	6.01		
5			80	3.50		0.98	6.01		
6									
7									
8									
9									
10									
MEAN									
R									



**ITEM: SR71 M□3.5\*6.0\*0.8 TAPING**



METER: HP-4191A

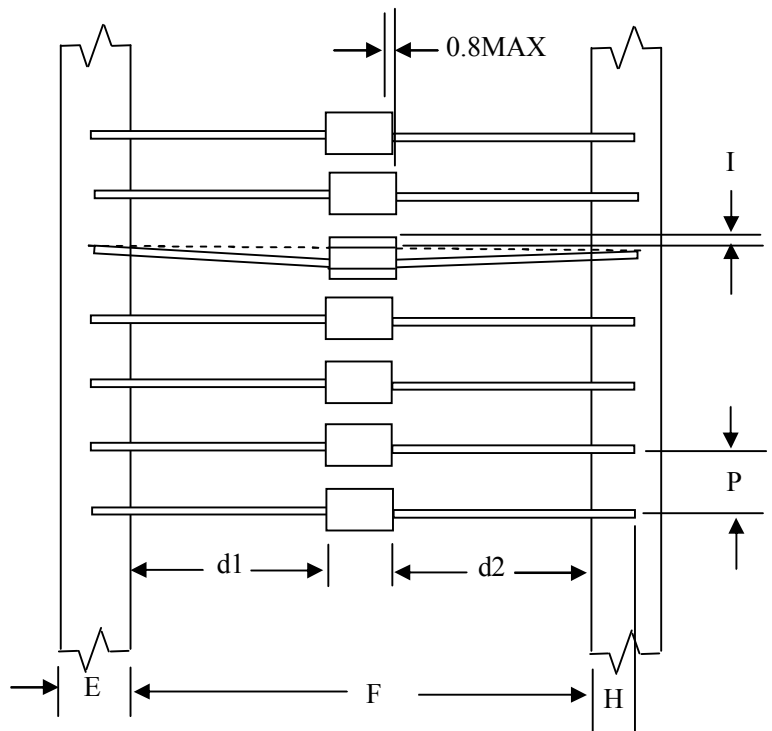
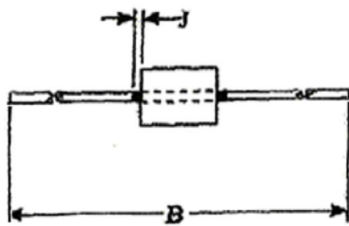
ITEM	SR71 ML 3.5*6.0*0.8TAPING
PART NO.	

**PACKAGING**

Available in tape and reel bulk

**TAPE DIMENSION:**

TYPE	B	E	F	H	I	J	P	d1-d2
ML3.5*6.0*0.8	63.00	6.00	52.2	4.20	1.35	0.80	5.00	1.20
	±3.00	±0.50	±1.50	MIN	MAX	MAX	±0.50	MAX



## X-ON Electronics

Largest Supplier of Electrical and Electronic Components

*Click to view similar products for [Ferrite Beads](#) category:*

*Click to view products by [Meled](#) manufacturer:*

Other Similar products are found below :

[2943778301](#) [BMB1J0120BN3JIT](#) [82350120560](#) [0261014605](#) [2643066902](#) [3061000011](#) [2673045901](#) [2643083601](#) [2643074901](#) [4361142521](#)  
[4078078621](#) [4078044821](#) [4078033621](#) [CZB2BFTTE121P](#) [BMB2A0120AN2](#) [BMB1J0200BN3JIT](#) [EMI0805R-220](#) [74279250](#) [7427924](#)  
[CZB1JGTTD202P](#) [MAF0603GWY551AT000](#) [MAF1005GWZ102AT000](#) [BLM18HE152SH1D](#) [2944778302](#) [BLM02PX600SN1D](#) [SMB2.5-1](#)  
[EMI1206R-600](#) [BLM02KX180SN1D](#) [BLM02BC100SN1D](#) [BLM02KX100SN1D](#) [BLM02BB101SN1D](#) [BLM02BC220SN1D](#)  
[BLE32PN260SH1L](#) [BLE32PN260SN1L](#) [BLE32PN260SZ1L](#) [74275013](#) [7427503](#) [BLM18HE601SH1D](#) [BLM15BD152SN1D](#)  
[BLM15BD152SZ1D](#) [BLE18PS080SZ1D](#) [BLM21PG221BH1D](#) [WLBD1005HCU330TL](#) [BLM21AG471BH1D](#) [BLE18PS080BH1D](#)  
[BLM21AG331BH1D](#) [BLM21PG300BH1D](#) [BLM21PG600BH1D](#) [BLM03HB401SZ1D](#) [BLM03HB401SN1D](#)