



MMC3630KJ-B Prototyping Board

MMC3630KJ -B

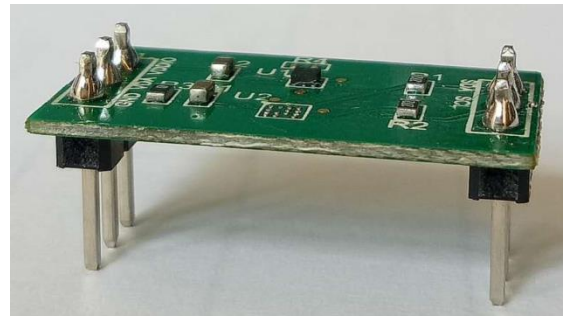
GENERAL DESCRIPTION

The MMC3630KJ-B provides a convenient and easy way to evaluate and prototype with the MMC3630KJ three axes magnetic sensor. The magnetic sensor and passive components needed for operations are SMT mounted on the board. Communication, power and ground pins of the MMC3630KJ SMT device are brought out to standard 0.10 inch on center connections on the sides of the prototyping board. Wires can either be soldered directly to the prototyping board or DIP pins can be used with widely available breadboard kits.

For complete performance specifications of the MMC3630KJ refer to the MMC3630KJ datasheet.

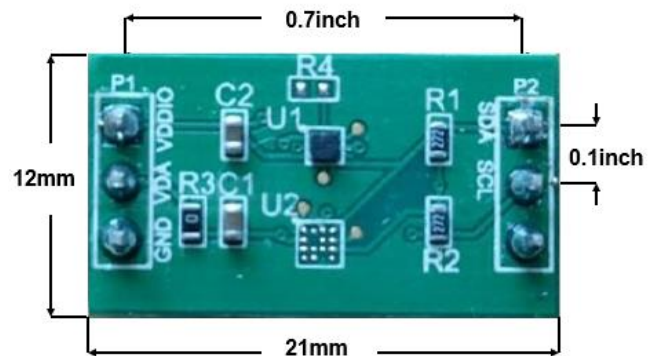
PIN DESCRIPTION

Pin	Name	Description
P1-1	VDDIO	I2C Supply Voltage
P1-2	VDD3V	Power
P1-3	GND	Ground
P2-1	SDA	I2C SDA
P2-2	SCL	I2C SCL
P2-3	NC	NOT CONNECTED



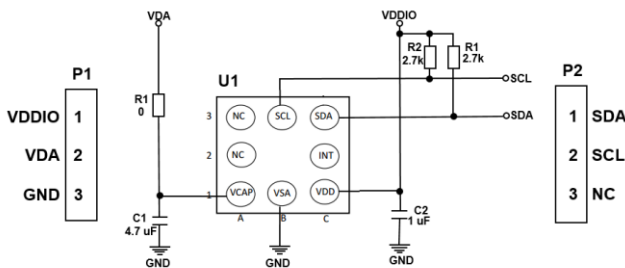
MMC3630KJ-B

PCB OUTLINE AND CONNECTION DIMENSIONS



MMC3630KJ-B

SCHEMATIC OF THE MMC3630KJ-B



MMC3630KJ-B

Information furnished by MEMSIC is believed to be accurate and reliable. However, no responsibility is assumed by MEMSIC for its use, nor for any infringements of patents or other rights of third parties, which may result from its use. No license is granted by implication or otherwise under any patent or patent rights of MEMSIC.

MEMSIC, Inc.
 One Technology Drive, Suite 325, Andover, MA, 01810, USA
 Tel: +1 978 738 0900 Fax: +1 978 738 0196
 www.memsic.com

X-ON Electronics

Largest Supplier of Electrical and Electronic Components

Click to view similar products for [Magnetic Sensor Development Tools](#) category:

Click to view products by [Memsic](#) manufacturer:

Other Similar products are found below :

[SEN0529](#) [5579](#) [MIKROE-5190](#) [EVB90395_QFN](#) [MIKROE-5125](#) [MIKROE-1647](#) [MK21P-KIT](#) [AS5047P-TS_EK_AB](#) [AS5048B-TS_EK_MB](#) [AS5245-QF_EK_PB](#) [AS526X-MF_EK_SB](#) [AS5510-WL_EK_AB](#) [AS5510-WL_EK_DB](#) [AS5600-SO_POTUINO](#) [AS5X47P-TS_EK_MB](#) [AS5X47-TS_EK_SB](#) [AS5X6X-EK-ST](#) [AS5115-SS_EK_DB](#) [AS5130-SS_EK_DB](#) [AS5145B-SS_EK_AB](#) [MMC34160PJ-B](#) [AS5170A-SO_EK_AB](#) [AS5147-EK-AB](#) [HAL APB V5.1](#) [DPP401G000](#) [4022](#) [4366](#) [AS5013-QF_EK_AB](#) [AS5040 AB](#) [AS5045 AB](#) [AS5047D-TS_EK_AB](#) [AS5048A-TS_EK_AB](#) [AS5048B-TS_EK_AB](#) [AS5048-TS_EK_DB](#) [AS5050A-QF_EK_AB](#) [AS5132 AB](#) [AS5132-PB](#) [AS5145B-EK-AB-STM1.0](#) [AS5147P-TS_EK_AB](#) [AS5162-EK-AB](#) [AS5247U-TQ_EK_AB](#) [AS5247U-TQ_EK_SB](#) [AS5306-TS_EK_AB](#) [AS5311-TS_EK_AB](#) [AS5510-SOIC8-AB](#) [AS5600-SO_EK_AB](#) [AS5600-SO_EK_ST](#) [AS5601-SO_EK_AB](#) [AS5601-SO_EK_ST](#) [AS5X47U-TS_EK_AB](#)