

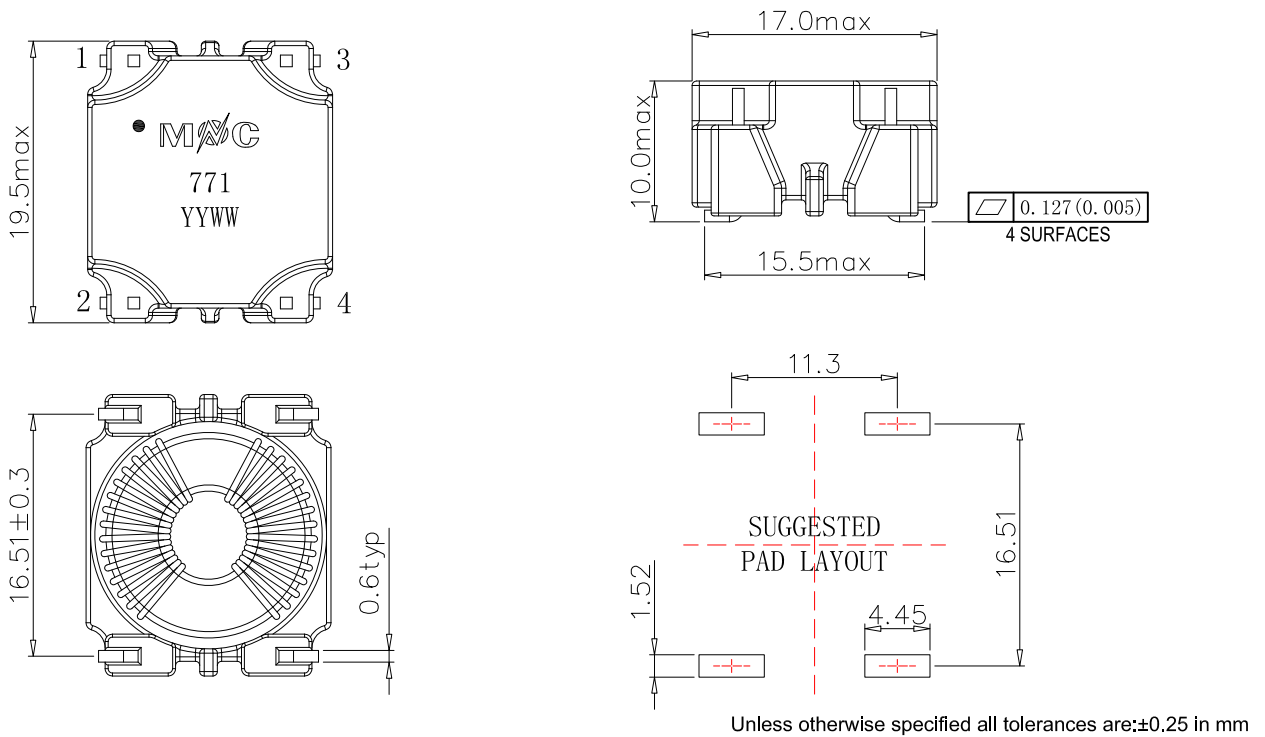
- Common mode chokes for AC Power lines
- High impedance to minimize common mode noise
- Excellent EMI performance
- Operate temperature range: -40 °C to +125 °C (Including self temperature rise)
- Storage temperature range: -40 °C to +125 °C



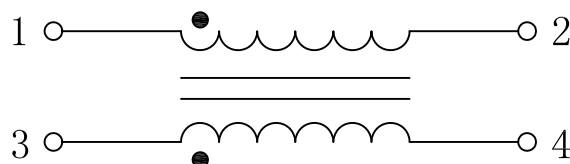
Electrical Specifications @25 °C

Part Number	OCL @10KHz, 0.1V	DCR	Turns Ratio	Rated Current $\Delta T \cong 40^{\circ}C$	Hi-Pot 1mA/1S/50Hz
	1-2, 3-4	1-2, 3-4	1-2 : 3-4		1-2 to 3-4
CM1385SG221N	225uH $\pm 35\%$	60m Ω Max.	1 : 1	2.3A Max.	1000Vac
CM1385SG591N	590uH $\pm 35\%$	25m Ω Max.	1 : 1	3.6A Max.	1000Vac
CM1385SG771N	770uH $\pm 35\%$	25m Ω Max.	1 : 1	3.6A Max.	1000Vac
CM1385SG132N	1320uH $\pm 35\%$	60m Ω Max.	1 : 1	2.25A Max.	1000Vac
CM1385SG152N	1470uH $\pm 35\%$	65m Ω Max.	1 : 1	2.2A Max.	1000Vac

MECHANICAL

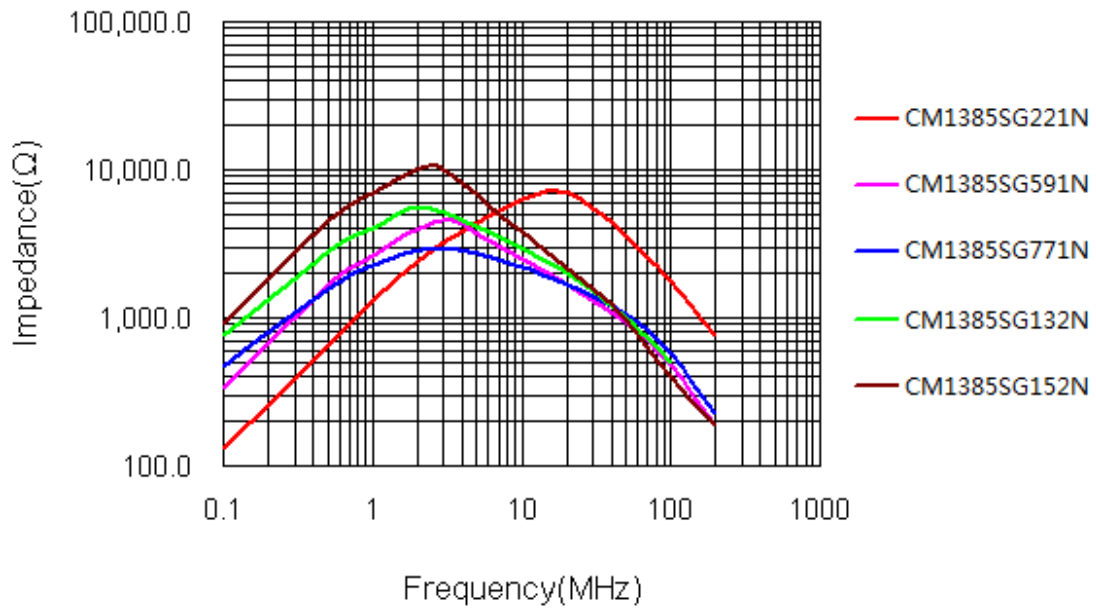


SCHEMATICS

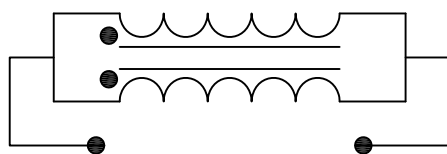
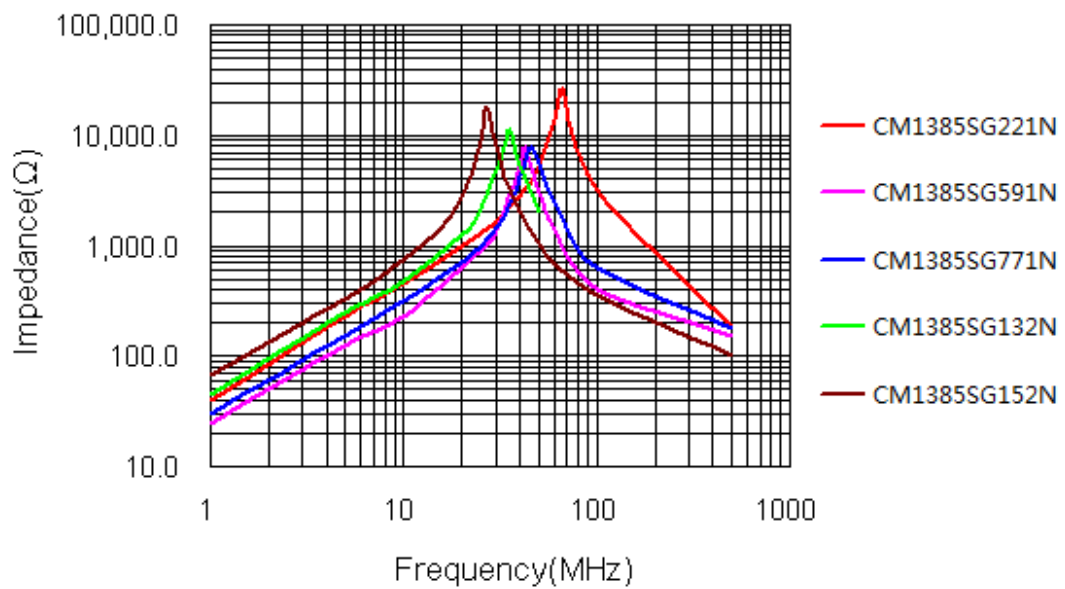


Impedance Vs Frequency

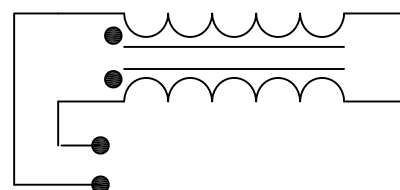
Common Mode



Different Mode



Common Mode



Different Mode

X-ON Electronics

Largest Supplier of Electrical and Electronic Components

Click to view similar products for [Common Mode Chokes / Filters](#) category:

Click to view products by [Mentech](#) manufacturer:

Other Similar products are found below :

[PE-64683](#) [ST6118T-R](#) [FE3X025-10-7NL](#) [T8114NLT](#) [TCM0806G-350-2P-T](#) [TCM0806G-650-2P-T](#) [IND-0110](#) [UAL21VR0802000](#)
[UALSC023000000](#) [UALSC1020JH000](#) [UALSU10VD20010](#) [UALSU9VD070100](#) [36-00037](#) [CM7060M132R-10](#) [UALW21HS072450](#)
[UALSU9H0208000](#) [UAL24VK06450CH](#) [PLT10HH501100PNB](#) [PLT10HH401100PNB](#) [PLT10HH1026R0PNB](#) [36-00029-01](#) [PE-67531](#)
[TLH10UB](#) [113 0R5](#) [2752045447](#) [CM8663Z161B-10](#) [7351V](#) [CMF16-153131](#) [T8116NLT](#) [CMS2-10-R](#) [FE2X10-4-2NL](#) [T8003NLT](#) [CTX01-](#)
[13663](#) [CTX66-19521-R](#) [RC212-0.5-10M](#) [RC112-0.4-15M](#) [RC212-0.6-6M8](#) [RC212-0.4-15M](#) [RC112-0.3-30M](#) [4534-3](#)
[WTCF2012Z0M751PB](#) [PH9408.814NLT](#) [B82498B3221J000](#) [PAC6006.364NLT](#) [PAC6006.444NLT](#) [PAC6006.204NLT](#) [PH9407.204NLT](#)
[PAC6006.264NLT](#) [PH9408.105NLT](#) [PH9408.494NLT](#) [PAC6006.104NLT](#)