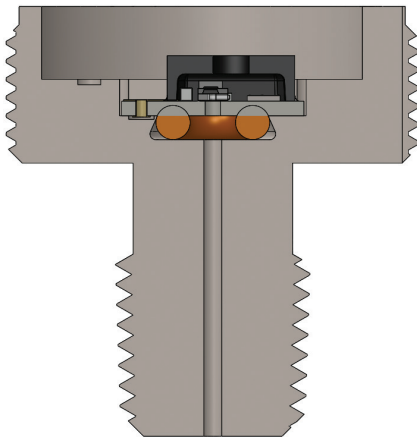
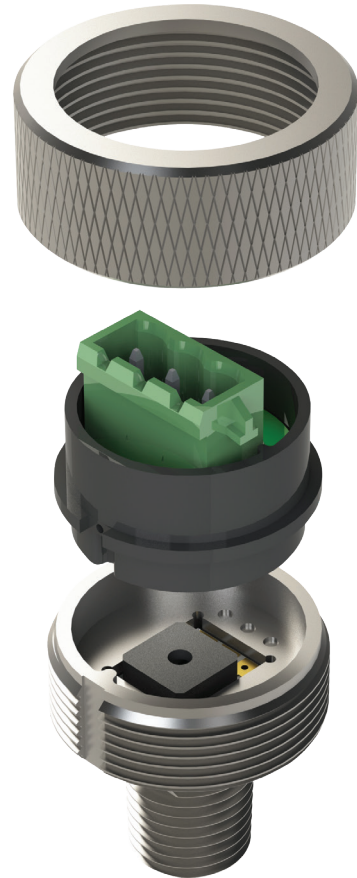




MeriTREK – TR Evaluation Kit A convenient solution to quickly assess the TR Series pressure sensor

FEATURES

- Stainless steel housing (1/4»NPT connection)
- TR-Series face seal ready
- Easy to handle (fixing screw)
- Valid reliability test support
- Suggested temperature range : 0..85°C
- 1..35bar gage/absolute pressure range supported (TR-Series)
- HNBR O-ring (interchangeable for different media)
- TR-Series final application design-in suggestion (sealing)
- Enjoy all TR-Series features without any external components
- TR-Series TR1-0100A-001 (included)



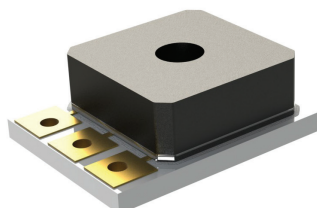
TR inside fitting



The TR Series pressure transducer is a rugged, direct-media pressure monitoring solution designed for today's toughest pressure sensing environments.

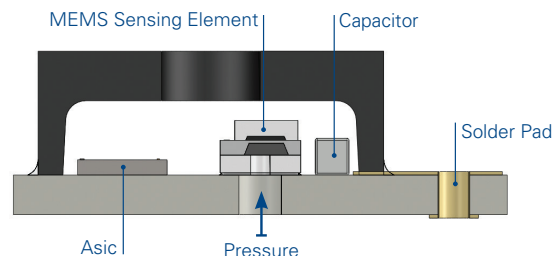
The TR Series pressure transducer is a fully compensated, amplified output pressure sensor package combining Merit Sensor's Sentium process harsh media MEMS piezoresistive die with state-of-the-art pressure sensor ASIC signal management.

TR1-0100A-001



Standard Face Seal

CROSS SECTION



Features	Min.	Typ.	Max.	Unit	Notes
Electrical					
Supply Voltage (Vdd)	4.5	5	5.5	Volts	
Supply Current			10	mA	
Output Current			2.5	mA	
Short Circuit Current	-25		25	mA	
Reverse Polarity Protection	-33			Volts	Device will cease operation during supply voltage fault.
Overvoltage Protection			33	Volts	Device will cease operation during supply voltage fault.
ESD	>4			kV	Human body model 1.5kOhm/100pF.
Performance					
Output Range (Vout)	5		95	%Vdd	
Resolution		0.03		%FS	12 bit DAC
Accuracy	-2.5	0	2.5	% FS	Accuracy includes all error for hysteresis and linearity over the entire operating temperature range. It does not include lifetime drift. -40°C to 150°C.
Static Proof Pressure		2X FS		PSIA	
Burst Pressure		3X FS		PSIA	
Lifetime Drift			0.5	%FS	
Repeatability			0.25	%FS	
Environmental					
Operating Temperature	-40		150	°C	
Storage Temperature	-55		150	°C	
Weight		1.08		Grams	

X-ON Electronics

Largest Supplier of Electrical and Electronic Components

Click to view similar products for [Pressure Sensor Development Tools](#) category:

Click to view products by [Merit Sensor](#) manufacturer:

Other Similar products are found below :

[1075](#) [MIKROE-2293](#) [PTC04_DB_PRESSURE01](#) [S2GOPRESSUREDPS310TOBO1](#) [SEN0068](#) [MEX-1031](#) [EVALSHNBV01TOBO1](#)
[MIKROE-2550](#) [SEN-09375](#) [SEN-08685](#) [SEN-09673](#) [PGA302EVM-037](#) [SEN0066](#) [DPP101G000](#) [DPP901G000](#) [2651](#) [3965](#) [4258](#) [4414](#)
[4494](#) [4633](#) [4816](#) [NPA-201-EV](#) [EVAL-CN0289-EB1Z](#) [BMP581 Shuttle Board 3.0](#) [KIT0139](#) [SEN0251](#) [SEN0295](#) [SEN0296](#) [SEN0297](#)
[SEN0298](#) [SEN0299](#) [SEN0343](#) [SEN0372](#) [SEN0371](#) [410-333](#) [MPRLS0015PA0000SAB](#) [MPRLS0025PA00001AB](#) [MPRLS0300YG00001BB](#)
[MPRSS0001PG00001CB](#) [SEK001](#) [EVALSHNBV01DPS310TOBO1](#) [EVALSHNBV01DPS368TOBO1](#) [KP254PS2GOKITTOBO1](#)
[KP215F1701PS2GOKITTOBO1](#) [KP229E3518PS2GOKITTOBO1](#) [KP275PS2GOKITTOBO1](#) [S2GOPRESSUREDPS368TOBO1](#)
[DPP101A000](#) [MIKROE-3411](#)