

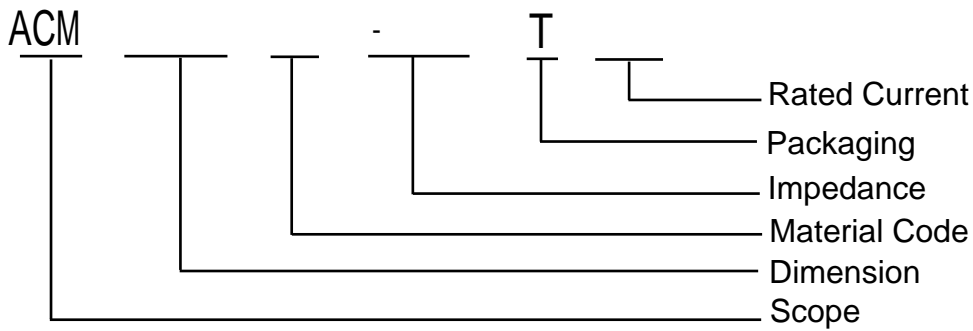
## 1. Features

1. High common mode impedance at high frequency cause excellent noise suppression performance.
2. ACM series realizes small size and low profile.
3. 100% Lead(Pb) & Halogen-Free and RoHS compliant.
4. Operating temperature-40~+125°C (Including self - temperature rise)

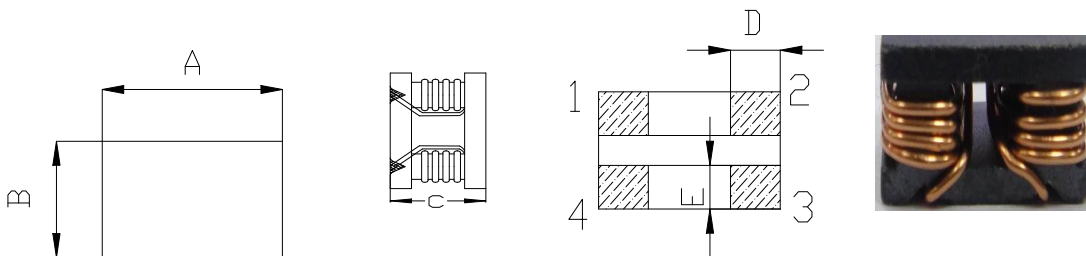
## 2. APPLICATIONS

- USB2.0 of IEEE1394, PC, peripheral equipments, small digital AV equipments, etc.
- LVDS lines of Note PC, LCD
- Audio lines

## 3 PRODUCT IDENTIFICATION



## 4. Shape and Dimensions

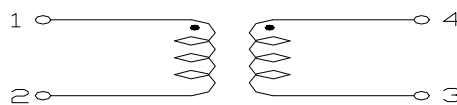


[Table 4-1]

Unit: mm [inch]

Part Number	A	B	C	D	E
ACM855050	8.5±0.3	5.0±0.3	5.1±0.3	2.5 min	2.00min

## 5. Circuit Diagram



**Appendix A: Electrical Characteristics**
**I. ACM855050 Series Common Mode Filter**

Part Number	Z( $\Omega$ ) 100MHz/0.1V	RDC (m $\Omega$ ) Max	Rated Current (A) Max	IR (M $\Omega$ ) Min	Rated Voltage (V) Max
	Typ				
ACM855050□-601T40	600	15	4.0	10	50
ACM855050□-102T30	1000	17	3.0	10	50
ACM855050□-122T30	1200	25	3.0	10	50
ACM855050□-152T20	1500	40	2.0	10	50
ACM855050□-202T15	2200	65	1.5	10	50

□F: Upper Plate Ceramics (Black)    M: Upper resin(Yellow)

## X-ON Electronics

Largest Supplier of Electrical and Electronic Components

*Click to view similar products for [Common Mode Chokes / Filters](#) category:*

*Click to view products by [MetalLions](#) manufacturer:*

Other Similar products are found below :

[PE-64683](#) [RD5122-6-9M6](#) [RD6137-6-7M5](#) [RD8147-16-3M0](#) [ST6118T-R](#) [FE3X025-10-7NL](#) [RD7147-25-0M7](#) [TCM0806G-350-2P-T](#)  
[TCM0806G-650-2P-T](#) [IND-0110](#) [UAL21VR0802000](#) [UALSC023000000](#) [UALSC1020JH000](#) [UALSU10VD20010](#) [UALSU9VD070100](#) [36-00037](#) [UALW21HS072450](#) [UALSU9H0208000](#) [UAL24VK06450CH](#) [PLT10HH501100PNB](#) [PLT10HH401100PNB](#) [PLT10HH1026R0PNB](#)  
[36-00029-01](#) [PE-67531](#) [TLH10UB](#) [113 0R5](#) [2752045447](#) [7351V](#) [CMF16-153131](#) [RD7147-6-6M0](#) [T8116NLT](#) [FE2X10-4-2NL](#) [36-00029-07](#)  
[T8003NLT](#) [CTX01-13663](#) [CTX66-19521-R](#) [RC212-0.5-10M](#) [RC112-0.4-15M](#) [RC212-0.6-6M8](#) [RC212-0.4-15M](#) [RC112-0.3-30M](#)  
[WTCF2012Z0M751PB](#) [PH9408.814NLT](#) [PAC6006.364NLT](#) [PAC6006.444NLT](#) [PAC6006.204NLT](#) [PH9407.204NLT](#) [PAC6006.264NLT](#)  
[PH9408.105NLT](#) [PH9408.494NLT](#) [PAC6006.104NLT](#)