

# SPECIFICATIONS

---



---

Customer : \_\_\_\_\_

Customer P/N: \_\_\_\_\_ **MSCD Series** \_\_\_\_\_

Drawing No : \_\_\_\_\_

Quantity : 0 Pcs. Date : 2017/09/06

Chilisin P/N : \_\_\_\_\_ **MSCD Series/参照** \_\_\_\_\_

|                            |  |
|----------------------------|--|
| <b>SPECIFICATION</b>       |  |
| <b>ACCEPTED BY:</b>        |  |
| <b>COMPONENT ENGINEER</b>  |  |
| <b>ELECTRICAL ENGINEER</b> |  |
| <b>MECHANICAL ENGINEER</b> |  |
| <b>APPROVED</b>            |  |
| <b>REJECTED</b>            |  |

**For Customer approval Only**

Qualification Status:     Full     Restricted     Rejected

| Approved By | Verified By | Re-checked By | Checked By |
|-------------|-------------|---------------|------------|
|             |             |               |            |

Comments: \_\_\_\_\_

**Meled Electronics Co., Ltd.**

www.meledinc.com

---



---

**Version change history**

| Rev. | Effective Date | Changed Contents | Change Reasons | Approved By |
|------|----------------|------------------|----------------|-------------|
| 01   | /              | New release      | /              | /           |

## 1. Features

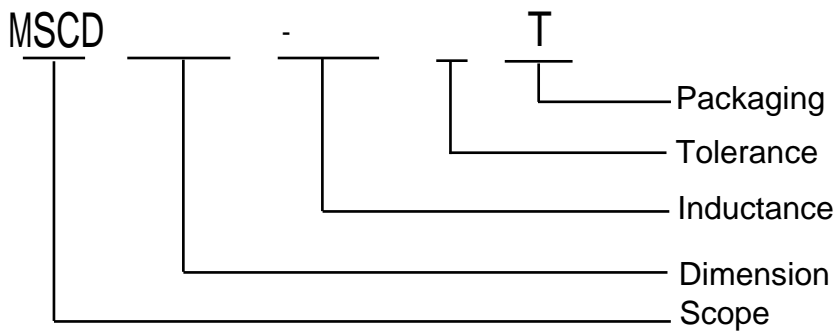
- High saturation current
- Magnetic shielded
- SMT type, suitable for reflow soldering.



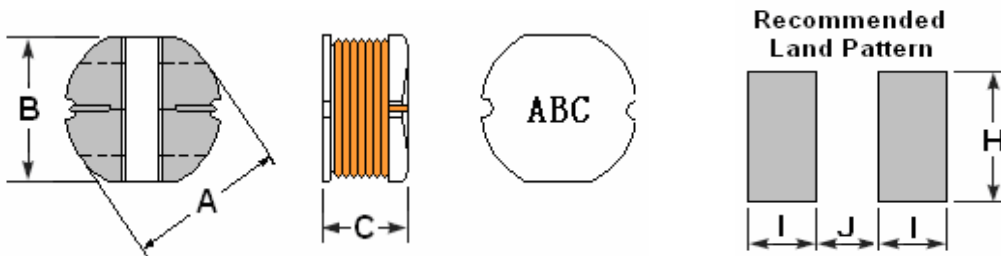
## 2. APPLICATIONS

- OA equipment, Notebook Computer
- LCD televisions
- DC/DC converters etc.

## 3. PRODUCT IDENTIFICATION



## 4. Shape and Dimensions



Unit: mm

| Series  | A        | B        | C       | I typ. | J typ. | H typ. |
|---------|----------|----------|---------|--------|--------|--------|
| MSCD31  | 3.5±0.15 | 3.0±0.15 | 1.6±0.3 | 1.6    | 0.8    | 3.5    |
| MSCD32  | 3.5±0.3  | 3.0±0.3  | 2.1±0.3 | 1.6    | 0.8    | 3.5    |
| MSCD42  | 4.5±0.3  | 4.0±0.3  | 2.0±0.3 | 1.9    | 1.2    | 4.5    |
| MSCD43  | 4.5±0.3  | 4.0±0.3  | 3.2±0.3 | 1.9    | 1.2    | 4.5    |
| MSCD52  | 5.8±0.3  | 5.2±0.3  | 2.0±0.3 | 2.2    | 1.6    | 5.4    |
| MSCD53  | 5.8±0.3  | 5.2±0.3  | 3.0±0.3 | 2.2    | 1.6    | 5.4    |
| MSCD54  | 5.8±0.3  | 5.2±0.3  | 4.5±0.3 | 2.2    | 1.6    | 5.4    |
| MSCD73  | 7.8±0.3  | 7.0±0.3  | 3.5±0.3 | 3.0    | 2.0    | 7.5    |
| MSCD75  | 7.8±0.3  | 7.0±0.3  | 5.0±0.3 | 3.0    | 2.0    | 7.5    |
| MSCD104 | 10.0±0.3 | 9.0±0.3  | 4.0±0.3 | 3.75   | 2.5    | 9.5    |
| MSCD105 | 10.0±0.3 | 9.0±0.3  | 5.4±0.3 | 3.75   | 2.5    | 9.5    |

**Appendix A: Electrical Characteristics**

**I. MSCD31 TYPE INDUCTORS ELECTRICAL CHARACTERISTICS&TEST CONDITIONS**

| Part Number  | L( $\mu$ H) | Tolerance  | Test Freq.   | DCR( $\Omega$ )Max | Isat(A) |
|--------------|-------------|------------|--------------|--------------------|---------|
| MSCD31-1R0MT | 1.0         | $\pm 20\%$ | 100 kHz,0.3V | 0.058              | 1.60    |
| MSCD31-1R5MT | 1.5         | $\pm 20\%$ | 100 kHz,0.3V | 0.078              | 1.55    |
| MSCD31-2R2MT | 2.2         | $\pm 20\%$ | 100 kHz,0.3V | 0.100              | 1.47    |
| MSCD31-3R3MT | 3.3         | $\pm 20\%$ | 100 kHz,0.3V | 0.126              | 1.34    |
| MSCD31-4R7MT | 4.7         | $\pm 20\%$ | 100kHz,0.3V  | 0.158              | 1.22    |
| MSCD31-5R6MT | 5.6         | $\pm 20\%$ | 100 kHz,0.3V | 0.186              | 1.09    |
| MSCD31-6R8MT | 6.8         | $\pm 20\%$ | 100 kHz,0.3V | 0.213              | 0.96    |
| MSCD31-8R2MT | 8.2         | $\pm 20\%$ | 100kHz,0.3V  | 0.238              | 0.84    |
| MSCD31-100KT | 10          | $\pm 10\%$ | 1kHz,0.3V    | 0.307              | 0.70    |
| MSCD31-150KT | 15          | $\pm 10\%$ | 1kHz,0.3V    | 0.466              | 0.59    |
| MSCD31-220KT | 22          | $\pm 10\%$ | 1kHz,0.3V    | 0.656              | 0.48    |
| MSCD31-270KT | 27          | $\pm 10\%$ | 1kHz,0.3V    | 0.774              | 0.43    |
| MSCD31-330KT | 33          | $\pm 10\%$ | 1kHz,0.3V    | 1.021              | 0.37    |
| MSCD31-390KT | 39          | $\pm 10\%$ | 1kHz,0.3V    | 1.122              | 0.32    |
| MSCD31-470KT | 47          | $\pm 10\%$ | 1kHz,0.3V    | 1.509              | 0.26    |
| MSCD31-560KT | 56          | $\pm 10\%$ | 1kHz,0.3V    | 1.675              | 0.24    |

**II. MSCD32TYPEINDUCTORSELECTRICALCHARACTERISTICS&TESTCONDITIONS**

| Part Number  | L( $\mu$ H) | Tolerance  | Test Freq.   | DCR( $\Omega$ )Max | Isat(A) |
|--------------|-------------|------------|--------------|--------------------|---------|
| MSCD32-1R0MT | 1.0         | $\pm 20\%$ | 100 kHz,0.3V | 0.048              | 1.75    |
| MSCD32-1R5MT | 1.5         | $\pm 20\%$ | 100 kHz,0.3V | 0.060              | 1.85    |
| MSCD32-1R8MT | 1.8         | $\pm 20\%$ | 100 kHz,0.3V | 0.070              | 1.70    |
| MSCD32-2R2MT | 2.2         | $\pm 20\%$ | 100 kHz,0.3V | 0.072              | 1.68    |
| MSCD32-2R7MT | 2.7         | $\pm 20\%$ | 100kHz,0.3V  | 0.090              | 1.55    |
| MSCD32-3R3MT | 3.3         | $\pm 20\%$ | 100 kHz,0.3V | 0.108              | 1.58    |
| MSCD32-3R9MT | 3.9         | $\pm 20\%$ | 100 kHz,0.3V | 0.115              | 1.30    |
| MSCD32-4R7MT | 4.7         | $\pm 20\%$ | 100kHz,0.3V  | 0.172              | 1.50    |
| MSCD32-5R6MT | 5.6         | $\pm 20\%$ | 100 kHz,0.3V | 0.192              | 1.36    |
| MSCD32-6R8MT | 6.8         | $\pm 20\%$ | 100 kHz,0.3V | 0.219              | 1.22    |
| MSCD32-8R2MT | 8.2         | $\pm 20\%$ | 100kHz,0.3V  | 0.247              | 1.09    |
| MSCD32-100KT | 10          | $\pm 10\%$ | 1kHz,0.3V    | 0.286              | 0.95    |
| MSCD32-120KT | 12          | $\pm 10\%$ | 1kHz,0.3V    | 0.325              | 0.88    |
| MSCD32-150KT | 15          | $\pm 10\%$ | 1kHz,0.3V    | 0.468              | 0.82    |
| MSCD32-180KT | 18          | $\pm 10\%$ | 1kHz,0.3V    | 0.546              | 0.76    |
| MSCD32-220KT | 22          | $\pm 10\%$ | 1kHz,0.3V    | 0.650              | 0.63    |
| MSCD32-270KT | 27          | $\pm 10\%$ | 1kHz,0.3V    | 0.850              | 0.62    |
| MSCD32-330KT | 33          | $\pm 10\%$ | 1kHz,0.3V    | 0.962              | 0.56    |
| MSCD32-390KT | 39          | $\pm 10\%$ | 1kHz,0.3V    | 1.05               | 0.51    |
| MSCD32-470KT | 47          | $\pm 10\%$ | 1kHz,0.3V    | 1.25               | 0.47    |
| MSCD32-560KT | 56          | $\pm 10\%$ | 1kHz,0.3V    | 1.59               | 0.42    |
| MSCD32-680KT | 68          | $\pm 10\%$ | 1kHz,0.3V    | 1.82               | 0.38    |
| MSCD32-820KT | 82          | $\pm 10\%$ | 1kHz,0.3V    | 2.44               | 0.34    |
| MSCD32-101KT | 100         | $\pm 10\%$ | 1kHz,0.3V    | 2.84               | 0.31    |
| MSCD32-151KT | 150         | $\pm 10\%$ | 1kHz,0.3V    | 2.62               | 0.25    |

### III. MSCD42 TYPE INDUCTORS ELECTRICAL CHARACTERISTICS & TEST CONDITIONS

| Part Number  | L(μ H) | Tolerance | Test Freq.  | DCR(Ω)Max | Isat(A) |
|--------------|--------|-----------|-------------|-----------|---------|
| MSCD42-1R0MT | 1.0    | ±20%      | 100kHz,0.3V | 0.050     | 3.00    |
| MSCD42-1R5MT | 1.5    | ±20%      | 100kHz,0.3V | 0.055     | 2.80    |
| MSCD42-2R2MT | 2.2    | ±20%      | 100kHz,0.3V | 0.065     | 1.50    |
| MSCD42-3R3MT | 3.3    | ±20%      | 100kHz,0.3V | 0.078     | 1.35    |
| MSCD42-4R7MT | 4.7    | ±20%      | 100kHz,0.3V | 0.095     | 1.20    |
| MSCD42-6R8MT | 6.8    | ±20%      | 100kHz,0.3V | 0.125     | 1.10    |
| MSCD42-8R2MT | 8.2    | ±20%      | 100kHz,0.3V | 0.150     | 1.02    |
| MSCD42-100KT | 10     | ±10%      | 1kHz,0.3V   | 0.180     | 0.90    |
| MSCD42-150KT | 15     | ±10%      | 1kHz,0.3V   | 0.470     | 0.82    |
| MSCD42-180KT | 18     | ±10%      | 1kHz,0.3V   | 0.480     | 0.75    |
| MSCD42-220KT | 22     | ±10%      | 1kHz,0.3V   | 0.450     | 0.60    |
| MSCD42-260KT | 26     | ±10%      | 1kHz,0.3V   | 0.470     | 0.55    |
| MSCD42-330KT | 33     | ±10%      | 1kHz,0.3V   | 0.500     | 0.54    |
| MSCD42-390KT | 39     | ±10%      | 1kHz,0.3V   | 0.700     | 0.50    |
| MSCD42-470KT | 47     | ±10%      | 1kHz,0.3V   | 0.800     | 0.48    |
| MSCD42-560KT | 56     | ±10%      | 1kHz,0.3V   | 0.900     | 0.45    |
| MSCD42-101KT | 100    | ±10%      | 1kHz,0.3V   | 1.500     | 0.10    |
| MSCD42-151KT | 150    | ±10%      | 1kHz,0.3V   | 2.300     | 0.09    |

### III. MSCD43 TYPE INDUCTORS ELECTRICAL CHARACTERISTICS & TEST CONDITIONS

| Part Number  | L(μ H) | Tolerance | Test Freq.  | DCR(Ω)Max | Isat(A) |
|--------------|--------|-----------|-------------|-----------|---------|
| MSCD43-1R0MT | 1.0    | ±20%      | 100kHz,0.3V | 0.033     | 2.85    |
| MSCD43-1R5MT | 1.5    | ±20%      | 100kHz,0.3V | 0.055     | 2.20    |
| MSCD43-2R2MT | 2.2    | ±20%      | 100kHz,0.3V | 0.047     | 1.95    |
| MSCD43-3R3MT | 3.3    | ±20%      | 100kHz,0.3V | 0.058     | 1.84    |
| MSCD43-3R9MT | 3.9    | ±20%      | 100kHz,0.3V | 0.090     | 1.70    |
| MSCD43-4R7MT | 4.7    | ±20%      | 100kHz,0.3V | 0.094     | 1.70    |
| MSCD43-5R6MT | 5.6    | ±20%      | 100kHz,0.3V | 0.120     | 1.60    |
| MSCD43-6R8MT | 6.8    | ±20%      | 100kHz,0.3V | 0.117     | 1.41    |
| MSCD43-8R2MT | 8.2    | ±20%      | 100kHz,0.3V | 0.132     | 1.26    |
| MSCD43-100KT | 10     | ±10%      | 1kHz,0.3V   | 0.182     | 1.15    |
| MSCD43-120KT | 12     | ±10%      | 1kHz,0.3V   | 0.210     | 1.05    |
| MSCD43-150KT | 15     | ±10%      | 1kHz,0.3V   | 0.235     | 0.92    |
| MSCD43-180KT | 18     | ±10%      | 1kHz,0.3V   | 0.338     | 0.84    |
| MSCD43-220KT | 22     | ±10%      | 1kHz,0.3V   | 0.378     | 0.76    |
| MSCD43-270KT | 27     | ±10%      | 1kHz,0.3V   | 0.522     | 0.71    |
| MSCD43-330KT | 33     | ±10%      | 1kHz,0.3V   | 0.540     | 0.64    |
| MSCD43-390KT | 39     | ±10%      | 1kHz,0.3V   | 0.650     | 0.59    |
| MSCD43-470KT | 47     | ±10%      | 1kHz,0.3V   | 0.844     | 0.54    |
| MSCD43-560KT | 56     | ±10%      | 1kHz,0.3V   | 0.937     | 0.50    |
| MSCD43-680KT | 68     | ±10%      | 1kHz,0.3V   | 1.117     | 0.46    |
| MSCD43-820KT | 82     | ±10%      | 1kHz,0.3V   | 1.180     | 0.43    |
| MSCD43-101KT | 100    | ±10%      | 1kHz,0.3V   | 1.190     | 0.41    |
| MSCD43-151KT | 150    | ±10%      | 1kHz,0.3V   | 1.40      | 0.35    |
| MSCD43-221KT | 220    | ±10%      | 1kHz,0.3V   | 2.26      | 0.29    |
| MSCD43-331KT | 330    | ±10%      | 1kHz,0.3V   | 4.50      | 0.20    |
| MSCD43-471KT | 470    | ±10%      | 1kHz,0.3V   | 5.50      | 0.16    |
| MSCD43-561KT | 560    | ±10%      | 1kHz,0.3V   | 6.00      | 0.14    |
| MSCD43-681KT | 680    | ±10%      | 1kHz,0.3V   | 6.80      | 0.13    |
| MSCD43-821KT | 820    | ±10%      | 1kHz,0.3V   | 8.00      | 0.12    |
| MSCD43-102KT | 1000   | ±10%      | 1kHz,0.3V   | 15.6      | 0.14    |

### III. MSCD52 TYPE INDUCTORS ELECTRICAL CHARACTERISTICS & TEST CONDITIONS

| Part Number  | L(μH) | Tolerance | Test Freq.  | DCR(Ω)Max | Isat(A) |
|--------------|-------|-----------|-------------|-----------|---------|
| MSCD52-1R0MT | 1.0   | ±20%      | 100kHz,0.3V | 0.050     | 3.20    |
| MSCD52-1R5MT | 1.5   | ±20%      | 100kHz,0.3V | 0.065     | 3.00    |
| MSCD52-2R2MT | 2.2   | ±20%      | 100kHz,0.3V | 0.080     | 2.80    |
| MSCD52-3R3MT | 3.3   | ±20%      | 100kHz,0.3V | 0.120     | 2.40    |
| MSCD52-4R7MT | 4.7   | ±20%      | 100kHz,0.3V | 0.150     | 1.80    |
| MSCD52-5R6MT | 5.6   | ±20%      | 100kHz,0.3V | 0.160     | 1.50    |
| MSCD52-100KT | 10    | ±10%      | 1kHz,0.3V   | 0.230     | 1.10    |
| MSCD52-150KT | 15    | ±10%      | 1kHz,0.3V   | 0.300     | 1.00    |
| MSCD52-220KT | 22    | ±10%      | 1kHz,0.3V   | 0.400     | 0.85    |
| MSCD52-330KT | 33    | ±10%      | 1kHz,0.3V   | 0.550     | 0.70    |
| MSCD52-470KT | 47    | ±10%      | 1kHz,0.3V   | 0.750     | 0.55    |
| MSCD52-680KT | 68    | ±10%      | 1kHz,0.3V   | 1.200     | 0.45    |
| MSCD52-101KT | 100   | ±10%      | 1kHz,0.3V   | 1.750     | 0.35    |
| MSCD52-151KT | 150   | ±10%      | 1kHz,0.3V   | 2.600     | 0.22    |
| MSCD52-221KT | 220   | ±10%      | 1kHz,0.3V   | 4.000     | 0.19    |
| MSCD52-271KT | 270   | ±10%      | 1kHz,0.3V   | 4.200     | 0.20    |

### IV. MSCD53 TYPE INDUCTORS ELECTRICAL CHARACTERISTICS & TEST CONDITIONS

| Part Number  | L(μH) | Tolerance | Test Freq.  | DCR(Ω)Max | Isat(A) |
|--------------|-------|-----------|-------------|-----------|---------|
| MSCD53-1R0MT | 1.0   | ±20%      | 100kHz,0.3V | 0.038     | 4.50    |
| MSCD53-1R5MT | 1.5   | ±20%      | 100kHz,0.3V | 0.041     | 4.00    |
| MSCD53-2R2MT | 2.2   | ±20%      | 100kHz,0.3V | 0.045     | 3.50    |
| MSCD53-3R3MT | 3.3   | ±20%      | 100kHz,0.3V | 0.055     | 2.80    |
| MSCD53-4R7MT | 4.7   | ±20%      | 100kHz,0.3V | 0.072     | 2.50    |
| MSCD53-6R8MT | 6.8   | ±20%      | 100kHz,0.3V | 0.090     | 2.20    |
| MSCD53-8R2MT | 8.2   | ±20%      | 100kHz,0.3V | 0.100     | 2.00    |
| MSCD53-100KT | 10    | ±10%      | 1kHz,0.3V   | 0.120     | 1.80    |
| MSCD53-150KT | 15    | ±10%      | 1kHz,0.3V   | 0.150     | 1.70    |
| MSCD53-220KT | 22    | ±10%      | 1kHz,0.3V   | 0.220     | 1.50    |
| MSCD53-270KT | 27    | ±10%      | 1kHz,0.3V   | 0.240     | 1.40    |
| MSCD53-330KT | 33    | ±10%      | 1kHz,0.3V   | 0.300     | 1.10    |
| MSCD53-470KT | 47    | ±10%      | 1kHz,0.3V   | 0.430     | 0.90    |
| MSCD53-680KT | 68    | ±10%      | 1kHz,0.3V   | 0.600     | 0.80    |
| MSCD53-101KT | 100   | ±10%      | 1kHz,0.3V   | 0.900     | 0.60    |
| MSCD53-151KT | 150   | ±10%      | 1kHz,0.3V   | 1.300     | 0.43    |
| MSCD53-181KT | 180   | ±10%      | 1kHz,0.3V   | 1.500     | 0.41    |
| MSCD53-221KT | 220   | ±10%      | 1kHz,0.3V   | 2.000     | 0.38    |
| MSCD53-331KT | 330   | ±10%      | 1kHz,0.3V   | 3.200     | 0.28    |

### VI. MSCD54 TYPE INDUCTORS ELECTRICAL CHARACTERISTICS & TEST CONDITIONS

| Part Number  | L(μH) | Tolerance | Test Freq.  | DCR(Ω)Max | Isat(A) |
|--------------|-------|-----------|-------------|-----------|---------|
| MSCD54-R47MT | 0.47  | ±20%      | 100kHz,0.3V | 0.012     | 4.80    |
| MSCD54-1R0MT | 1.0   | ±20%      | 100kHz,0.3V | 0.020     | 4.00    |
| MSCD54-1R5MT | 1.5   | ±20%      | 100kHz,0.3V | 0.025     | 3.80    |
| MSCD54-2R2MT | 2.2   | ±20%      | 100kHz,0.3V | 0.027     | 3.50    |
| MSCD54-3R3MT | 3.3   | ±20%      | 100kHz,0.3V | 0.034     | 3.00    |
| MSCD54-4R7MT | 4.7   | ±20%      | 100kHz,0.3V | 0.040     | 2.80    |
| MSCD54-6R8MT | 6.8   | ±20%      | 100kHz,0.3V | 0.080     | 2.50    |
| MSCD54-8R2MT | 8.2   | ±20%      | 100kHz,0.3V | 0.090     | 2.10    |
| MSCD54-100KT | 10    | ±10%      | 1kHz,0.3V   | 0.100     | 1.50    |

## VI. MSCD54 TYPE INDUCTORS ELECTRICAL CHARACTERISTICS & TEST CONDITIONS

| Part Number  | L(μH) | Tolerance | Test Freq. | DCR(Ω)Max | Isat(A) |
|--------------|-------|-----------|------------|-----------|---------|
| MSCD54-120KT | 12    | ±10%      | 1kHz,0.3V  | 0.120     | 1.40    |
| MSCD54-150KT | 15    | ±10%      | 1kHz,0.3V  | 0.140     | 1.30    |
| MSCD54-180KT | 18    | ±10%      | 1kHz,0.3V  | 0.150     | 1.23    |
| MSCD54-220KT | 22    | ±10%      | 1kHz,0.3V  | 0.180     | 1.11    |
| MSCD54-270KT | 27    | ±10%      | 1kHz,0.3V  | 0.200     | 0.97    |
| MSCD54-330KT | 33    | ±10%      | 1kHz,0.3V  | 0.230     | 0.88    |
| MSCD54-390KT | 39    | ±10%      | 1kHz,0.3V  | 0.320     | 0.80    |
| MSCD54-470KT | 47    | ±10%      | 1kHz,0.3V  | 0.370     | 0.72    |
| MSCD54-560KT | 56    | ±10%      | 1kHz,0.3V  | 0.420     | 0.68    |
| MSCD54-680KT | 68    | ±10%      | 1kHz,0.3V  | 0.460     | 0.61    |
| MSCD54-820KT | 82    | ±10%      | 1kHz,0.3V  | 0.600     | 0.58    |
| MSCD54-101KT | 100   | ±10%      | 1kHz,0.3V  | 0.700     | 0.52    |
| MSCD54-121KT | 120   | ±10%      | 1kHz,0.3V  | 0.930     | 0.48    |
| MSCD54-151KT | 150   | ±10%      | 1kHz,0.3V  | 1.100     | 0.40    |
| MSCD54-181KT | 180   | ±10%      | 1kHz,0.3V  | 1.380     | 0.38    |
| MSCD54-221KT | 220   | ±10%      | 1kHz,0.3V  | 1.570     | 0.35    |
| MSCD54-331KT | 330   | ±10%      | 1kHz,0.3V  | 3.000     | 0.22    |
| MSCD54-471KT | 470   | ±10%      | 1kHz,0.3V  | 4.000     | 0.19    |
| MSCD54-561KT | 560   | ±10%      | 1kHz,0.3V  | 4.000     | 0.18    |
| MSCD54-681KT | 680   | ±10%      | 1kHz,0.3V  | 4.500     | 0.15    |
| MSCD54-821KT | 820   | ±10%      | 1kHz,0.3V  | 5.200     | 0.17    |
| MSCD54-102KT | 1000  | ±10%      | 1kHz,0.3V  | 5.500     | 0.15    |

## V. MSCD73 TYPE INDUCTORS ELECTRICAL CHARACTERISTICS & TEST CONDITIONS

| Part Number  | L(μH) | Tolerance | Test Freq.  | DCR(Ω)Max | Isat(A) |
|--------------|-------|-----------|-------------|-----------|---------|
| MSCD73-1R0MT | 1.0   | ±20%      | 100kHz,0.3V | 0.018     | 5.50    |
| MSCD73-2R2MT | 2.2   | ±20%      | 100kHz,0.3V | 0.023     | 4.50    |
| MSCD73-2R5MT | 2.5   | ±20%      | 100kHz,0.3V | 0.023     | 4.20    |
| MSCD73-3R3MT | 3.3   | ±20%      | 100kHz,0.3V | 0.025     | 4.00    |
| MSCD73-4R7MT | 4.7   | ±20%      | 100kHz,0.3V | 0.039     | 3.50    |
| MSCD73-6R8MT | 6.8   | ±20%      | 100kHz,0.3V | 0.040     | 2.80    |
| MSCD73-100KT | 10    | ±10%      | 1kHz,0.3V   | 0.080     | 1.44    |
| MSCD73-120KT | 12    | ±10%      | 1kHz,0.3V   | 0.090     | 1.39    |
| MSCD73-150KT | 15    | ±10%      | 1kHz,0.3V   | 0.100     | 1.24    |
| MSCD73-180KT | 18    | ±10%      | 1kHz,0.3V   | 0.110     | 1.12    |
| MSCD73-220KT | 22    | ±10%      | 1kHz,0.3V   | 0.130     | 1.07    |
| MSCD73-270KT | 27    | ±10%      | 1kHz,0.3V   | 0.150     | 0.94    |
| MSCD73-330KT | 33    | ±10%      | 1kHz,0.3V   | 0.170     | 0.85    |
| MSCD73-390KT | 39    | ±10%      | 1kHz,0.3V   | 0.220     | 0.74    |
| MSCD73-470KT | 47    | ±10%      | 1kHz,0.3V   | 0.250     | 0.68    |
| MSCD73-560KT | 56    | ±10%      | 1kHz,0.3V   | 0.280     | 0.64    |
| MSCD73-680KT | 68    | ±10%      | 1kHz,0.3V   | 0.330     | 0.59    |
| MSCD73-820KT | 82    | ±10%      | 1kHz,0.3V   | 0.410     | 0.54    |
| MSCD73-101KT | 100   | ±10%      | 1kHz,0.3V   | 0.480     | 0.51    |
| MSCD73-121KT | 120   | ±10%      | 1kHz,0.3V   | 0.540     | 0.49    |
| MSCD73-151KT | 150   | ±10%      | 1kHz,0.3V   | 0.600     | 0.45    |
| MSCD73-181KT | 180   | ±10%      | 1kHz,0.3V   | 0.720     | 0.40    |
| MSCD73-221KT | 220   | ±10%      | 1kHz,0.3V   | 1.200     | 0.45    |
| MSCD73-271KT | 270   | ±10%      | 1kHz,0.3V   | 1.300     | 0.37    |
| MSCD73-331KT | 330   | ±10%      | 1kHz,0.3V   | 1.490     | 0.35    |
| MSCD73-471KT | 470   | ±10%      | 1kHz,0.3V   | 2.200     | 0.30    |
| MSCD73-561KT | 560   | ±10%      | 1kHz,0.3V   | 2.400     | 0.25    |

## VII. MSCD75 TYPE INDUCTORS ELECTRICAL CHARACTERISTICS & TEST CONDITIONS

| Part Number  | L(μ H) | Tolerance | Test Freq.  | DCR(Ω)Max | Isat(A) |
|--------------|--------|-----------|-------------|-----------|---------|
| MSCD75-1R0MT | 1.0    | ±20%      | 100kHz,0.3V | 0.019     | 5.80    |
| MSCD75-1R5MT | 1.5    | ±20%      | 100kHz,0.3V | 0.028     | 5.30    |
| MSCD75-2R2MT | 2.2    | ±20%      | 100kHz,0.3V | 0.035     | 4.50    |
| MSCD75-3R3MT | 3.3    | ±20%      | 100kHz,0.3V | 0.045     | 4.00    |
| MSCD75-4R7MT | 4.7    | ±20%      | 100kHz,0.3V | 0.058     | 3.20    |
| MSCD75-6R8MT | 6.8    | ±20%      | 100kHz,0.3V | 0.070     | 2.80    |
| MSCD75-8R2MT | 8.2    | ±20%      | 100kHz,0.3V | 0.075     | 2.50    |
| MSCD75-100KT | 10     | ±10%      | 1kHz,0.3V   | 0.078     | 2.30    |
| MSCD75-120KT | 12     | ±10%      | 1kHz,0.3V   | 0.085     | 2.00    |
| MSCD75-150KT | 15     | ±10%      | 1kHz,0.3V   | 0.090     | 1.80    |
| MSCD75-180KT | 18     | ±10%      | 1kHz,0.3V   | 0.100     | 1.60    |
| MSCD75-220KT | 22     | ±10%      | 1kHz,0.3V   | 0.110     | 1.50    |
| MSCD75-270KT | 27     | ±10%      | 1kHz,0.3V   | 0.120     | 1.30    |
| MSCD75-330KT | 33     | ±10%      | 1kHz,0.3V   | 0.130     | 1.20    |
| MSCD75-390KT | 39     | ±10%      | 1kHz,0.3V   | 0.160     | 1.10    |
| MSCD75-470KT | 47     | ±10%      | 1kHz,0.3V   | 0.180     | 1.00    |
| MSCD75-560KT | 56     | ±10%      | 1kHz,0.3V   | 0.240     | 0.94    |
| MSCD75-680KT | 68     | ±10%      | 1kHz,0.3V   | 0.280     | 0.85    |
| MSCD75-820KT | 82     | ±10%      | 1kHz,0.3V   | 0.370     | 0.78    |
| MSCD75-101KT | 100    | ±10%      | 1kHz,0.3V   | 0.430     | 0.72    |
| MSCD75-121KT | 120    | ±10%      | 1kHz,0.3V   | 0.470     | 0.66    |
| MSCD75-151KT | 150    | ±10%      | 1kHz,0.3V   | 0.640     | 0.58    |
| MSCD75-181KT | 180    | ±10%      | 1kHz,0.3V   | 0.710     | 0.51    |
| MSCD75-221KT | 220    | ±10%      | 1kHz,0.3V   | 0.960     | 0.49    |
| MSCD75-271KT | 270    | ±10%      | 1kHz,0.3V   | 1.110     | 0.42    |
| MSCD75-331KT | 330    | ±10%      | 1kHz,0.3V   | 1.260     | 0.40    |
| MSCD75-391KT | 390    | ±10%      | 1kHz,0.3V   | 1.770     | 0.36    |
| MSCD75-471KT | 470    | ±10%      | 1kHz,0.3V   | 1.960     | 0.34    |
| MSCD75-681KT | 680    | ±10%      | 1kHz,0.3V   | 2.180     | 0.27    |
| MSCD75-102KT | 1000   | ±10%      | 1kHz,0.3V   | 3.850     | 0.20    |

## VIII. MSCD104 TYPE INDUCTORS ELECTRICAL CHARACTERISTICS & TEST CONDITIONS

| Part Number   | L(μ H) | Tolerance | Test Freq.  | DCR(Ω)Max | Isat(A) |
|---------------|--------|-----------|-------------|-----------|---------|
| MSCD104-1R0MT | 1.0    | ±20%      | 100kHz,0.3V | 0.012     | 6.70    |
| MSCD104-2R2MT | 2.2    | ±20%      | 100kHz,0.3V | 0.020     | 5.40    |
| MSCD104-3R3MT | 3.3    | ±20%      | 100kHz,0.3V | 0.028     | 3.85    |
| MSCD104-4R7MT | 4.7    | ±20%      | 100kHz,0.3V | 0.038     | 3.25    |
| MSCD104-6R8MT | 6.8    | ±20%      | 100kHz,0.3V | 0.042     | 2.95    |
| MSCD104-8R2MT | 8.2    | ±20%      | 100kHz,0.3V | 0.048     | 2.70    |
| MSCD104-100KT | 10     | ±10%      | 1kHz,0.3V   | 0.050     | 2.38    |
| MSCD104-120KT | 12     | ±10%      | 1kHz,0.3V   | 0.060     | 2.10    |
| MSCD104-150KT | 15     | ±10%      | 1kHz,0.3V   | 0.070     | 1.87    |
| MSCD104-180KT | 18     | ±10%      | 1kHz,0.3V   | 0.080     | 1.73    |
| MSCD104-220KT | 22     | ±10%      | 1kHz,0.3V   | 0.090     | 1.60    |
| MSCD104-270KT | 27     | ±10%      | 1kHz,0.3V   | 0.100     | 1.44    |
| MSCD104-330KT | 33     | ±10%      | 1kHz,0.3V   | 0.120     | 1.26    |
| MSCD104-390KT | 39     | ±10%      | 1kHz,0.3V   | 0.150     | 1.20    |
| MSCD104-470KT | 47     | ±10%      | 1kHz,0.3V   | 0.170     | 1.10    |



## IX. MSCD104 TYPE INDUCTORS ELECTRICAL CHARACTERISTICS & TEST CONDITIONS

| Part Number   | L(μ H) | Tolerance | Test Freq. | DCR(Ω)Max | Isat(A) |
|---------------|--------|-----------|------------|-----------|---------|
| MSCD104-560KT | 56     | ±10%      | 1kHz,0.3V  | 0.200     | 1.01    |
| MSCD104-680KT | 68     | ±10%      | 1kHz,0.3V  | 0.220     | 0.91    |
| MSCD104-820KT | 82     | ±10%      | 1kHz,0.3V  | 0.250     | 0.85    |
| MSCD104-101KT | 100    | ±10%      | 1kHz,0.3V  | 0.340     | 0.74    |
| MSCD104-121KT | 120    | ±10%      | 1kHz,0.3V  | 0.400     | 0.69    |
| MSCD104-151KT | 150    | ±10%      | 1kHz,0.3V  | 0.540     | 0.61    |
| MSCD104-181KT | 180    | ±10%      | 1kHz,0.3V  | 0.620     | 0.56    |
| MSCD104-221KT | 220    | ±10%      | 1kHz,0.3V  | 0.720     | 0.53    |
| MSCD104-271KT | 270    | ±10%      | 1kHz,0.3V  | 0.950     | 0.45    |
| MSCD104-331KT | 330    | ±10%      | 1kHz,0.3V  | 1.100     | 0.42    |
| MSCD104-391KT | 390    | ±10%      | 1kHz,0.3V  | 1.240     | 0.38    |
| MSCD104-471KT | 470    | ±10%      | 1kHz,0.3V  | 1.530     | 0.35    |
| MSCD104-561KT | 560    | ±10%      | 1kHz,0.3V  | 1.900     | 0.32    |

## X. MSCD105 TYPE INDUCTORS ELECTRICAL CHARACTERISTICS & TEST CONDITIONS

| Part Number   | L(μ H) | Tolerance | Test Freq.  | DCR(Ω)Max | Isat(A) |
|---------------|--------|-----------|-------------|-----------|---------|
| MSCD105-1R0MT | 1.0    | ±20%      | 100kHz,0.3V | 0.010     | 8.63    |
| MSCD105-2R2MT | 2.2    | ±20%      | 100kHz,0.3V | 0.017     | 7.20    |
| MSCD105-3R3MT | 3.3    | ±20%      | 100kHz,0.3V | 0.019     | 6.50    |
| MSCD105-4R7MT | 4.7    | ±20%      | 100kHz,0.3V | 0.022     | 5.50    |
| MSCD105-6R8MT | 6.8    | ±20%      | 100kHz,0.3V | 0.040     | 4.50    |
| MSCD105-8R2MT | 8.2    | ±20%      | 100kHz,0.3V | 0.050     | 3.50    |
| MSCD105-100KT | 10     | ±10%      | 1kHz,0.3V   | 0.060     | 2.60    |
| MSCD105-120KT | 12     | ±10%      | 1kHz,0.3V   | 0.062     | 2.10    |
| MSCD105-150KT | 15     | ±10%      | 1kHz,0.3V   | 0.070     | 1.72    |
| MSCD105-180KT | 18     | ±10%      | 1kHz,0.3V   | 0.080     | 1.58    |
| MSCD105-220KT | 22     | ±10%      | 1kHz,0.3V   | 0.090     | 1.42    |
| MSCD105-270KT | 27     | ±10%      | 1kHz,0.3V   | 0.100     | 1.32    |
| MSCD105-330KT | 33     | ±10%      | 1kHz,0.3V   | 0.110     | 1.16    |
| MSCD105-390KT | 39     | ±10%      | 1kHz,0.3V   | 0.120     | 1.10    |
| MSCD105-470KT | 47     | ±10%      | 1kHz,0.3V   | 0.140     | 1.00    |
| MSCD105-560KT | 56     | ±10%      | 1kHz,0.3V   | 0.190     | 0.93    |
| MSCD105-680KT | 68     | ±10%      | 1kHz,0.3V   | 0.210     | 0.85    |
| MSCD105-820KT | 82     | ±10%      | 1kHz,0.3V   | 0.280     | 0.79    |
| MSCD105-101KT | 100    | ±10%      | 1kHz,0.3V   | 0.340     | 0.72    |
| MSCD105-121KT | 120    | ±10%      | 1kHz,0.3V   | 0.370     | 0.63    |
| MSCD105-151KT | 150    | ±10%      | 1kHz,0.3V   | 0.510     | 0.55    |
| MSCD105-181KT | 180    | ±10%      | 1kHz,0.3V   | 0.570     | 0.50    |
| MSCD105-221KT | 220    | ±10%      | 1kHz,0.3V   | 0.780     | 0.47    |
| MSCD105-271KT | 270    | ±10%      | 1kHz,0.3V   | 0.870     | 0.41    |
| MSCD105-331KT | 330    | ±10%      | 1kHz,0.3V   | 1.200     | 0.37    |
| MSCD105-391KT | 390    | ±10%      | 1kHz,0.3V   | 1.350     | 0.35    |
| MSCD105-471KT | 470    | ±10%      | 1kHz,0.3V   | 1.500     | 0.33    |
| MSCD105-561KT | 560    | ±10%      | 1kHz,0.3V   | 1.900     | 0.30    |
| MSCD105-681KT | 680    | ±10%      | 1kHz,0.3V   | 2.250     | 0.28    |
| MSCD105-821KT | 820    | ±10%      | 1kHz,0.3V   | 2.550     | 0.24    |
| MSCD105-102KT | 1000   | ±10%      | 1kHz,0.3V   | 2.600     | 0.30    |
| MSCD105-222KT | 2200   | ±10%      | 1kHz,0.3V   | 6.750     | 0.15    |

Isat: Saturation Current, the current when the inductance becomes 10% lower than its initial value.

## X-ON Electronics

Largest Supplier of Electrical and Electronic Components

*Click to view similar products for [Fixed Inductors](#) category:*

*Click to view products by [MetalLions](#) manufacturer:*

Other Similar products are found below :

[CR32NP-100KC](#) [70F224AI](#) [MHQ1005P10NJ](#) [MHQ1005P1N0S](#) [MHQ1005P2N4S](#) [MHQ1005P3N6S](#) [MHQ1005P5N1S](#) [MHQ1005P8N2J](#)  
[PE-53601NL](#) [PE-53602NL](#) [PG0936.113NLT](#) [9220-20](#) [9310-16](#) [PM06-2N7](#) [PM06-39NJ](#) [A01TK](#) [1206CS-471XJ](#) [HC2-R47-R](#) [HC8-1R2-R](#)  
[HCF1305-3R3-R](#) [1206CS-151XG](#) [RCH664NP-4R7M](#) [RCP1317NP-391L](#) [DH2280-4R7M](#) [DS1608C-106](#) [B10TJ](#) [B82498B3101J000](#) [ELJ-](#)  
[RE27NJF2](#) [1812CS-153XJ](#) [1812CS-183XJ](#) [1812CS-223XJ](#) [1812LS-104XJ](#) [1812LS-105XJ](#) [1812LS-124XJ](#) [1812LS-154XJ](#) [1812LS-223XJ](#)  
[1812LS-224XJ](#) [1812LS-563XJ](#) [1812LS-683XJ](#) [1812LS-824XJ](#) [NIN-FB101JTR110F](#) [NIN-FB471JTR62F](#) [NIN-FC1R5JTR220F](#) [NIN-](#)  
[HCR15JTRF](#) [NIN-HCR33JTRF](#) [NIN-HDR22JTRF](#) [NIN-HDR82JTRF](#) [NIN-HK2N7STRF](#) [NIN-PA150KTR370F](#) [NIN-PB100KTR550F](#)