

1. Features

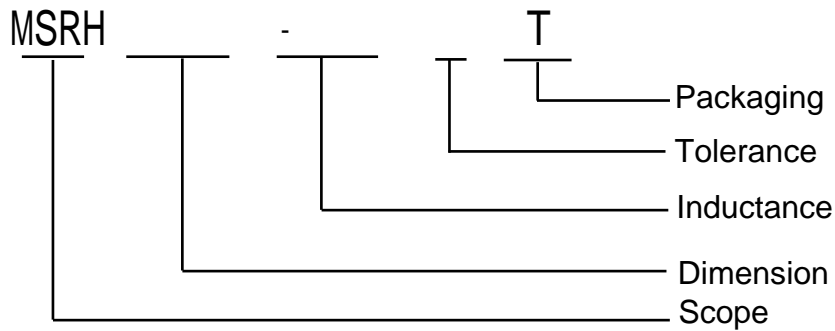
- High saturation current
- Magnetic shielded
- SMT type, suitable for reflow soldering.



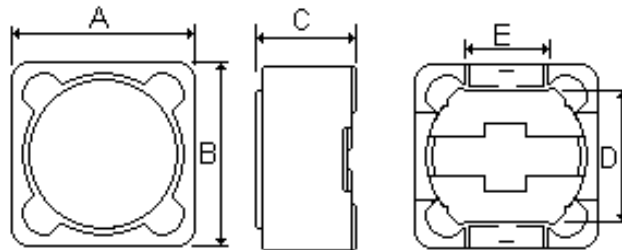
2. APPLICATIONS

- OA equipment, Notebook Computer
- LCD televisions
- DC/DC converters etc.

3. PRODUCT IDENTIFICATION



4. Shape and Dimensions



Unit: mm

| Part | A | B | C | D | E |
|----------|----------|----------|----------|-----|-----|
| MSRH73 | 7.3±0.3 | 7.3±0.3 | 3.4±0.3 | 5.0 | 2.0 |
| MSRH74 | 7.3±0.3 | 7.3±0.3 | 4.2±0.3 | 5.0 | 2.0 |
| MSRH124 | 12.2±0.4 | 12.2±0.4 | 4.5±0.3 | 7.6 | 5.0 |
| MSRH125 | 12.2±0.4 | 12.2±0.4 | 5.7±0.3 | 7.6 | 5.0 |
| MSRH127 | 12.2±0.4 | 12.2±0.4 | 7.5±0.3 | 7.6 | 5.0 |
| MSRH1210 | 12.2±0.4 | 12.2±0.4 | 10.0±0.3 | 7.6 | 5.0 |

Appendix A: Electrical Characteristics

I. MSRH73 TYPE INDUCTORS ELECTRICAL CHARACTERISTICS&TEST CONDITIONS

| Part Number | L (μH) | Tolerance | Test Freq. | DCR(Ω)Max | Isat(A) |
|--------------|--------|-----------|--------------|-----------|---------|
| MSRH73-1R0NT | 1.0 | ± 30% | 100kHz,0.25v | 0.025 | 3.60 |
| MSRH73-2R2NT | 2.2 | ± 30% | 100kHz,0.25v | 0.035 | 2.50 |
| MSRH73-3R3NT | 3.3 | ± 30% | 1kHz,0.25v | 0.035 | 2.50 |
| MSRH73-4R7NT | 4.7 | ± 30% | 1kHz,0.25v | 0.031 | 2.00 |
| MSRH73-6R8NT | 6.8 | ± 30% | 1kHz,0.25v | 0.045 | 1.85 |
| MSRH73-100MT | 10 | ± 20% | 1kHz,0.25v | 0.072 | 1.68 |
| MSRH73-120MT | 12 | ± 20% | 1kHz,0.25v | 0.098 | 1.52 |
| MSRH73-150MT | 15 | ± 20% | 1kHz,0.25v | 0.130 | 1.33 |
| MSRH73-180MT | 18 | ± 20% | 1kHz,0.25v | 0.140 | 1.20 |
| MSRH73-220MT | 22 | ± 20% | 1kHz,0.25v | 0.190 | 1.07 |
| MSRH73-270MT | 27 | ± 20% | 1kHz,0.25v | 0.210 | 0.96 |
| MSRH73-330MT | 33 | ± 20% | 1kHz,0.25v | 0.240 | 0.91 |
| MSRH73-390MT | 39 | ± 20% | 1kHz,0.25v | 0.320 | 0.77 |
| MSRH73-470MT | 47 | ± 20% | 1kHz,0.25v | 0.360 | 0.76 |
| MSRH73-560MT | 56 | ± 20% | 1kHz,0.25v | 0.470 | 0.68 |
| MSRH73-680MT | 68 | ± 20% | 1kHz,0.25v | 0.520 | 0.61 |
| MSRH73-820MT | 82 | ± 20% | 1kHz,0.25v | 0.690 | 0.57 |
| MSRH73-101MT | 100 | ± 20% | 1kHz,0.25v | 0.790 | 0.50 |
| MSRH73-121MT | 120 | ± 20% | 1kHz,0.25v | 0.890 | 0.49 |
| MSRH73-151MT | 150 | ± 20% | 1kHz,0.25v | 1.270 | 0.43 |
| MSRH73-181MT | 180 | ± 20% | 1kHz,0.25v | 1.450 | 0.39 |
| MSRH73-221MT | 220 | ± 20% | 1kHz,0.25v | 1.650 | 0.35 |
| MSRH73-271MT | 270 | ± 20% | 1kHz,0.25v | 2.310 | 0.32 |
| MSRH73-331MT | 330 | ± 20% | 1kHz,0.25v | 2.620 | 0.28 |
| MSRH73-391MT | 390 | ± 20% | 1kHz,0.25v | 2.940 | 0.26 |
| MSRH73-471MT | 470 | ± 20% | 1kHz,0.25v | 4.180 | 0.24 |
| MSRH73-102MT | 1000 | ± 20% | 1kHz,0.25v | 9.440 | 0.16 |

II. MSRH74TYPEINDUCTORSELECTRICALCHARACTERISTICS&TESTCONDITIONS

| Part Number | L (μH) | Tolerance | Test Freq. | DCR(Ω)Max | Isat(A) |
|--------------|--------|-----------|--------------|-----------|---------|
| MSRH74-1R0NT | 1.0 | ± 30% | 100kHz,0.25v | 0.022 | 7.00 |
| MSRH74-2R2NT | 2.2 | ± 30% | 100kHz,0.25v | 0.028 | 4.20 |
| MSRH74-3R3NT | 3.3 | ± 30% | 100kHz,0.25v | 0.030 | 3.90 |
| MSRH74-4R7NT | 4.7 | ± 30% | 100kHz,0.25v | 0.035 | 3.50 |
| MSRH74-6R8NT | 6.8 | ± 30% | 100kHz,0.25v | 0.040 | 2.50 |
| MSRH74-100MT | 10 | ± 20% | 1kHz,0.25v | 0.049 | 1.84 |
| MSRH74-120MT | 12 | ± 20% | 1kHz,0.25v | 0.058 | 1.71 |
| MSRH74-150MT | 15 | ± 20% | 1kHz,0.25v | 0.081 | 1.47 |
| MSRH74-180MT | 18 | ± 20% | 1kHz,0.25v | 0.091 | 1.31 |
| MSRH74-220MT | 22 | ± 20% | 1kHz,0.25v | 0.110 | 1.23 |
| MSRH74-330MT | 33 | ± 20% | 1kHz,0.25v | 0.170 | 0.96 |
| MSRH74-390MT | 39 | ± 20% | 1kHz,0.25v | 0.230 | 0.91 |
| MSRH74-470MT | 47 | ± 20% | 1kHz,0.25v | 0.260 | 0.88 |
| MSRH74-560MT | 56 | ± 20% | 1kHz,0.25v | 0.350 | 0.75 |
| MSRH74-680MT | 68 | ± 20% | 1kHz,0.25v | 0.380 | 0.69 |
| MSRH74-820MT | 82 | ± 20% | 1kHz,0.25v | 0.430 | 0.61 |
| MSRH74-101MT | 100 | ± 20% | 1kHz,0.25v | 0.610 | 0.60 |
| MSRH74-121MT | 120 | ± 20% | 1kHz,0.25v | 0.660 | 0.52 |
| MSRH74-151MT | 150 | ± 20% | 1kHz,0.25v | 0.880 | 0.46 |
| MSRH74-181MT | 180 | ± 20% | 1kHz,0.25v | 0.980 | 0.42 |
| MSRH74-221MT | 220 | ± 20% | 1kHz,0.25v | 1.170 | 0.36 |
| MSRH74-271MT | 270 | ± 20% | 1kHz,0.25v | 1.640 | 0.34 |
| MSRH74-331MT | 330 | ± 20% | 1kHz,0.25v | 1.860 | 0.32 |
| MSRH74-391MT | 390 | ± 20% | 1kHz,0.25v | 2.850 | 0.29 |
| MSRH74-471MT | 470 | ± 20% | 1kHz,0.25v | 3.010 | 0.26 |
| MSRH74-561MT | 560 | ± 20% | 1kHz,0.25v | 3.620 | 0.23 |
| MSRH74-681MT | 680 | ± 20% | 1kHz,0.25v | 4.630 | 0.22 |
| MSRH74-821MT | 820 | ± 20% | 1kHz,0.25v | 5.200 | 0.20 |
| MSRH74-102MT | 1000 | ± 20% | 1kHz,0.25v | 6.000 | 0.18 |

III. MSRH124 TYPE INDUCTORS ELECTRICAL CHARACTERISTICS & TEST CONDITIONS

| Part Number | L(μH) | Tolerance | Test Freq. | DCR(Ω)Max | Isat(A) |
|---------------|-------|-----------|--------------|-----------|---------|
| MSRH124-1R0NT | 1.0 | ± 30% | 100kHz,0.25v | 0.008 | 7.00 |
| MSRH124-2R2NT | 2.2 | ± 30% | 100kHz,0.25v | 0.009 | 5.70 |
| MSRH124-3R3NT | 3.3 | ± 30% | 100kHz,0.25v | 0.015 | 5.20 |
| MSRH124-4R7NT | 4.7 | ± 30% | 100kHz,0.25v | 0.018 | 4.90 |
| MSRH124-6R8NT | 6.8 | ± 30% | 100kHz,0.25v | 0.023 | 4.50 |
| MSRH124-8R2NT | 8.2 | ± 30% | 100kHz,0.25v | 0.026 | 4.20 |
| MSRH124-100MT | 10 | ± 20% | 1kHz,0.25v | 0.028 | 4.00 |
| MSRH124-120MT | 12 | ± 20% | 1kHz,0.25v | 0.038 | 3.50 |
| MSRH124-150MT | 15 | ± 20% | 1kHz,0.25v | 0.050 | 3.20 |
| MSRH124-180MT | 18 | ± 20% | 1kHz,0.25v | 0.057 | 3.10 |
| MSRH124-220MT | 22 | ± 20% | 1kHz,0.25v | 0.066 | 2.90 |
| MSRH124-270MT | 27 | ± 20% | 1kHz,0.25v | 0.080 | 2.80 |
| MSRH124-330MT | 33 | ± 20% | 1kHz,0.25v | 0.097 | 2.70 |
| MSRH124-390MT | 39 | ± 20% | 1kHz,0.25v | 0.132 | 2.10 |
| MSRH124-470MT | 47 | ± 20% | 1kHz,0.25v | 0.150 | 1.90 |
| MSRH124-560MT | 56 | ± 20% | 1kHz,0.25v | 0.190 | 1.80 |
| MSRH124-680MT | 68 | ± 20% | 1kHz,0.25v | 0.220 | 1.50 |
| MSRH124-820MT | 82 | ± 20% | 1kHz,0.25v | 0.260 | 1.30 |
| MSRH124-101MT | 100 | ± 20% | 1kHz,0.25v | 0.308 | 1.20 |
| MSRH124-121MT | 120 | ± 20% | 1kHz,0.25v | 0.380 | 1.10 |
| MSRH124-151MT | 150 | ± 20% | 1kHz,0.25v | 0.530 | 0.95 |
| MSRH124-181MT | 180 | ± 20% | 1kHz,0.25v | 0.620 | 0.85 |
| MSRH124-221MT | 220 | ± 20% | 1kHz,0.25v | 0.700 | 0.80 |
| MSRH124-271MT | 270 | ± 20% | 1kHz,0.25v | 0.876 | 0.60 |
| MSRH124-331MT | 330 | ± 20% | 1kHz,0.25v | 0.990 | 0.50 |
| MSRH124-471MT | 470 | ± 20% | 1kHz,0.25v | 1.300 | 0.40 |
| MSRH124-152MT | 1500 | ± 20% | 1kHz,0.25v | 4.000 | 0.29 |
| MSRH124-333MT | 33000 | ± 20% | 1kHz,0.25v | 95.000 | 0.07 |

III. MSRH125 TYPE INDUCTORS ELECTRICAL CHARACTERISTICS & TEST CONDITIONS

| Part Number | L(μH) | Tolerance | Test Freq. | DCR(Ω)Max | Isat(A) |
|---------------|-------|-----------|--------------|-----------|---------|
| MSRH125-1R0NT | 1.0 | ± 30% | 100kHz,0.25v | 0.010 | 8.00 |
| MSRH125-2R2NT | 2.2 | ± 30% | 100kHz,0.25v | 0.014 | 7.80 |
| MSRH125-3R3NT | 3.3 | ± 30% | 100kHz,0.25v | 0.014 | 7.60 |
| MSRH125-4R7NT | 4.7 | ± 30% | 100kHz,0.25v | 0.020 | 5.60 |
| MSRH125-6R8NT | 6.8 | ± 30% | 100kHz,0.25v | 0.020 | 5.20 |
| MSRH125-8R2NT | 8.2 | ± 30% | 100kHz,0.25v | 0.021 | 4.50 |
| MSRH125-100MT | 10 | ± 20% | 1kHz,0.25v | 0.025 | 4.20 |
| MSRH125-120MT | 12 | ± 20% | 1kHz,0.25v | 0.027 | 3.50 |
| MSRH125-150MT | 15 | ± 20% | 1kHz,0.25v | 0.030 | 3.30 |
| MSRH125-180MT | 18 | ± 20% | 1kHz,0.25v | 0.034 | 3.00 |
| MSRH125-220MT | 22 | ± 20% | 1kHz,0.25v | 0.042 | 2.80 |
| MSRH125-270MT | 27 | ± 20% | 1kHz,0.25v | 0.051 | 2.30 |
| MSRH125-330MT | 33 | ± 20% | 1kHz,0.25v | 0.065 | 2.10 |
| MSRH125-390MT | 39 | ± 20% | 1kHz,0.25v | 0.068 | 2.00 |
| MSRH125-470MT | 47 | ± 20% | 1kHz,0.25v | 0.075 | 1.80 |
| MSRH125-560MT | 56 | ± 20% | 1kHz,0.25v | 0.110 | 1.70 |
| MSRH125-680MT | 68 | ± 20% | 1kHz,0.25v | 0.120 | 1.50 |
| MSRH125-820MT | 82 | ± 20% | 1kHz,0.25v | 0.140 | 1.40 |
| MSRH125-101MT | 100 | ± 20% | 1kHz,0.25v | 0.198 | 1.30 |

III. MSRH125 TYPE INDUCTORS ELECTRICAL CHARACTERISTICS & TEST CONDITIONS

| Part Number | L (μ H) | Tolerance | Test Freq. | DCR(Ω)Max | Isat(A) |
|---------------|---------|-----------|------------|-----------|---------|
| MSRH125-121MT | 120 | ± 20% | 1kHz,0.25v | 0.220 | 1.10 |
| MSRH125-151MT | 150 | ± 20% | 1kHz,0.25v | 0.230 | 1.00 |
| MSRH125-181MT | 180 | ± 20% | 1kHz,0.25v | 0.290 | 0.90 |
| MSRH125-221MT | 220 | ± 20% | 1kHz,0.25v | 0.400 | 0.80 |
| MSRH125-271MT | 270 | ± 20% | 1kHz,0.25v | 0.460 | 0.75 |
| MSRH125-331MT | 330 | ± 20% | 1kHz,0.25v | 0.510 | 0.68 |
| MSRH125-391MT | 390 | ± 20% | 1kHz,0.25v | 0.690 | 0.65 |
| MSRH125-471MT | 470 | ± 20% | 1kHz,0.25v | 0.770 | 0.58 |
| MSRH125-561MT | 560 | ± 20% | 1kHz,0.25v | 0.860 | 0.54 |
| MSRH125-681MT | 680 | ± 20% | 1kHz,0.25v | 1.200 | 0.48 |
| MSRH125-821MT | 820 | ± 20% | 1kHz,0.25v | 1.340 | 0.43 |
| MSRH125-102MT | 1000 | ± 20% | 1kHz,0.25v | 1.900 | 0.40 |
| MSRH125-472MT | 4700 | ± 20% | 1kHz,0.25v | 8.280 | 0.30 |
| MSRH125-802MT | 8000 | ± 20% | 1kHz,0.25v | 15.000 | 0.22 |
| MSRH125-103MT | 10000 | ± 20% | 1kHz,0.25v | 20.000 | 0.12 |

IV. MSRH127 TYPE INDUCTORS ELECTRICAL CHARACTERISTICS & TEST CONDITIONS

| Part Number | L (μ H) | Tolerance | Test Freq. | DCR(Ω)Max | Isat(A) |
|---------------|---------|-----------|--------------|-----------|---------|
| MSRH127-1R0NT | 1.0 | ± 30% | 100kHz,0.25v | 0.0070 | 10.00 |
| MSRH127-2R2NT | 2.2 | ± 30% | 100kHz,0.25v | 0.0115 | 8.00 |
| MSRH127-3R3NT | 3.3 | ± 30% | 100kHz,0.25v | 0.0135 | 8.00 |
| MSRH127-4R7NT | 4.7 | ± 30% | 100kHz,0.25v | 0.0158 | 7.00 |
| MSRH127-6R8NT | 6.8 | ± 30% | 100kHz,0.25v | 0.0190 | 6.80 |
| MSRH127-8R2NT | 8.2 | ± 30% | 100kHz,0.25v | 0.0200 | 5.90 |
| MSRH127-100MT | 10 | ± 20% | 1kHz,0.25v | 0.0210 | 5.60 |
| MSRH127-120MT | 12 | ± 20% | 1kHz,0.25v | 0.0240 | 4.90 |
| MSRH127-150MT | 15 | ± 20% | 1kHz,0.25v | 0.0270 | 4.50 |
| MSRH127-180MT | 18 | ± 20% | 1kHz,0.25v | 0.0392 | 3.90 |
| MSRH127-220MT | 22 | ± 20% | 1kHz,0.25v | 0.0432 | 3.60 |
| MSRH127-270MT | 27 | ± 20% | 1kHz,0.25v | 0.0459 | 3.40 |
| MSRH127-330MT | 33 | ± 20% | 1kHz,0.25v | 0.0648 | 3.00 |
| MSRH127-390MT | 39 | ± 20% | 1kHz,0.25v | 0.0729 | 2.75 |
| MSRH127-470MT | 47 | ± 20% | 1kHz,0.25v | 0.1000 | 2.50 |
| MSRH127-560MT | 56 | ± 20% | 1kHz,0.25v | 0.110 | 2.35 |
| MSRH127-680MT | 68 | ± 20% | 1kHz,0.25v | 0.140 | 2.10 |
| MSRH127-820MT | 82 | ± 20% | 1kHz,0.25v | 0.160 | 1.95 |
| MSRH127-101MT | 100 | ± 20% | 1kHz,0.25v | 0.220 | 1.70 |
| MSRH127-121MT | 120 | ± 20% | 1kHz,0.25v | 0.250 | 1.60 |
| MSRH127-151MT | 150 | ± 20% | 1kHz,0.25v | 0.280 | 1.42 |
| MSRH127-181MT | 180 | ± 20% | 1kHz,0.25v | 0.350 | 1.30 |
| MSRH127-221MT | 220 | ± 20% | 1kHz,0.25v | 0.390 | 1.16 |
| MSRH127-271MT | 270 | ± 20% | 1kHz,0.25v | 0.560 | 1.06 |
| MSRH127-331MT | 330 | ± 20% | 1kHz,0.25v | 0.640 | 0.95 |
| MSRH127-391MT | 390 | ± 20% | 1kHz,0.25v | 0.700 | 0.88 |
| MSRH127-471MT | 470 | ± 20% | 1kHz,0.25v | 0.980 | 0.79 |
| MSRH127-561MT | 560 | ± 20% | 1kHz,0.25v | 1.070 | 0.73 |
| MSRH127-681MT | 680 | ± 20% | 1kHz,0.25v | 1.460 | 0.67 |
| MSRH127-821MT | 820 | ± 20% | 1kHz,0.25v | 1.640 | 0.60 |
| MSRH127-102MT | 1000 | ± 20% | 1kHz,0.25v | 1.820 | 0.55 |

V. MSRH1210 TYPE INDUCTORS ELECTRICAL CHARACTERISTICS & TEST CONDITIONS

| Part Number | L(μ H) | Tolerance | Test Freq. | DCR(Ω)Max | Isat(A) |
|----------------|-------------|------------|--------------|--------------------|---------|
| MSRH1210-1R0NT | 1.00 | $\pm 30\%$ | 100kHz,0.25v | 0.0070 | 10.1 |
| MSRH1210-2R2NT | 2.20 | $\pm 30\%$ | 100kHz,0.25v | 0.0100 | 8.59 |
| MSRH1210-3R3NT | 3.30 | $\pm 30\%$ | 100kHz,0.25v | 0.0117 | 8.00 |
| MSRH1210-4R7NT | 4.70 | $\pm 30\%$ | 100kHz,0.25v | 0.0134 | 7.55 |
| MSRH1210-6R8NT | 6.80 | $\pm 30\%$ | 100kHz,0.25v | 0.0168 | 6.86 |
| MSRH1210-8R2NT | 8.20 | $\pm 30\%$ | 100kHz,0.25v | 0.0185 | 6.68 |
| MSRH1210-100MT | 10.0 | $\pm 20\%$ | 1kHz,0.25v | 0.0200 | 6.51 |
| MSRH1210-120MT | 12.0 | $\pm 20\%$ | 1kHz,0.25v | 0.0220 | 6.20 |
| MSRH1210-150MT | 15.0 | $\pm 20\%$ | 1kHz,0.25v | 0.0255 | 5.76 |
| MSRH1210-180MT | 18.0 | $\pm 20\%$ | 1kHz,0.25v | 0.0273 | 5.57 |
| MSRH1210-220MT | 22.0 | $\pm 20\%$ | 1kHz,0.25v | 0.0305 | 5.27 |
| MSRH1210-270MT | 27.0 | $\pm 20\%$ | 1kHz,0.25v | 0.0329 | 5.07 |
| MSRH1210-330MT | 33.0 | $\pm 20\%$ | 1kHz,0.25v | 0.0390 | 4.66 |
| MSRH1210-390MT | 39.0 | $\pm 20\%$ | 1kHz,0.25v | 0.0514 | 4.06 |
| MSRH1210-470MT | 47.0 | $\pm 20\%$ | 1kHz,0.25v | 0.0590 | 3.79 |
| MSRH1210-560MT | 56.0 | $\pm 20\%$ | 1kHz,0.25v | 0.0638 | 3.64 |
| MSRH1210-680MT | 68.0 | $\pm 20\%$ | 1kHz,0.25v | 0.0830 | 3.19 |
| MSRH1210-820MT | 82.0 | $\pm 20\%$ | 1kHz,0.25v | 0.0940 | 3.00 |
| MSRH1210-101MT | 100 | $\pm 20\%$ | 1kHz,0.25v | 0.125 | 2.60 |
| MSRH1210-121MT | 120 | $\pm 20\%$ | 1kHz,0.25v | 0.140 | 2.46 |
| MSRH1210-151MT | 150 | $\pm 20\%$ | 1kHz,0.25v | 0.180 | 2.17 |
| MSRH1210-181MT | 180 | $\pm 20\%$ | 1kHz,0.25v | 0.200 | 2.06 |
| MSRH1210-221MT | 220 | $\pm 20\%$ | 1kHz,0.25v | 0.246 | 1.86 |
| MSRH1210-271MT | 270 | $\pm 20\%$ | 1kHz,0.25v | 0.324 | 1.62 |
| MSRH1210-331MT | 330 | $\pm 20\%$ | 1kHz,0.25v | 0.362 | 1.53 |
| MSRH1210-391MT | 390 | $\pm 20\%$ | 1kHz,0.25v | 0.396 | 1.46 |
| MSRH1210-471MT | 470 | $\pm 20\%$ | 1kHz,0.25v | 0.501 | 1.30 |
| MSRH1210-561MT | 560 | $\pm 20\%$ | 1kHz,0.25v | 0.546 | 1.25 |
| MSRH1210-681MT | 680 | $\pm 20\%$ | 1kHz,0.25v | 0.685 | 1.11 |
| MSRH1210-821MT | 820 | $\pm 20\%$ | 1kHz,0.25v | 0.836 | 0.98 |
| MSRH1210-102MT | 1000 | $\pm 20\%$ | 1kHz,0.25v | 0.955 | 0.94 |

Products with other electrical characteristic can be provided upon customer's request. Please contact your local sales.

X-ON Electronics

Largest Supplier of Electrical and Electronic Components

Click to view similar products for [Fixed Inductors](#) category:

Click to view products by [MetalLions](#) manufacturer:

Other Similar products are found below :

[CR32NP-100KC](#) [70F224AI](#) [MHQ1005P10NJ](#) [MHQ1005P1N0S](#) [MHQ1005P2N4S](#) [MHQ1005P3N6S](#) [MHQ1005P5N1S](#) [MHQ1005P8N2J](#)
[PE-53601NL](#) [PE-53602NL](#) [PG0936.113NLT](#) [9220-20](#) [9310-16](#) [PM06-2N7](#) [PM06-39NJ](#) [A01TK](#) [1206CS-471XJ](#) [HC2-R47-R](#) [HC8-1R2-R](#)
[HCF1305-3R3-R](#) [1206CS-151XG](#) [RCH664NP-4R7M](#) [RCP1317NP-391L](#) [DH2280-4R7M](#) [DS1608C-106](#) [B10TJ](#) [B82498B3101J000](#) [ELJ-](#)
[RE27NJF2](#) [1812CS-153XJ](#) [1812CS-183XJ](#) [1812CS-223XJ](#) [1812LS-104XJ](#) [1812LS-105XJ](#) [1812LS-124XJ](#) [1812LS-154XJ](#) [1812LS-223XJ](#)
[1812LS-224XJ](#) [1812LS-563XJ](#) [1812LS-683XJ](#) [1812LS-824XJ](#) [NIN-FB101JTR110F](#) [NIN-FB471JTR62F](#) [NIN-FC1R5JTR220F](#) [NIN-](#)
[HCR15JTRF](#) [NIN-HCR33JTRF](#) [NIN-HDR22JTRF](#) [NIN-HDR82JTRF](#) [NIN-HK2N7STRF](#) [NIN-PA150KTR370F](#) [NIN-PB100KTR550F](#)