

## 1. Features

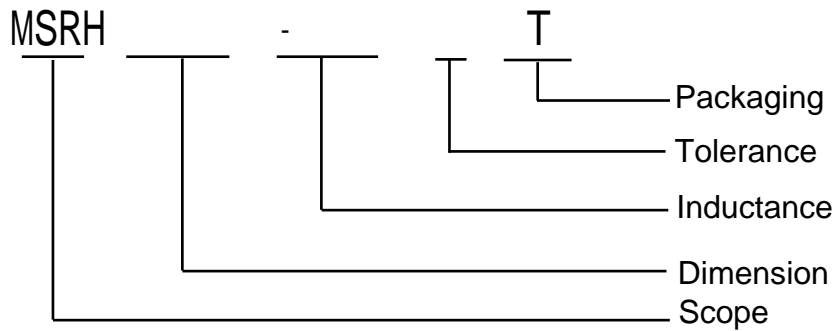
- High saturation current
- Magnetic shielded
- SMT type, suitable for reflow soldering.



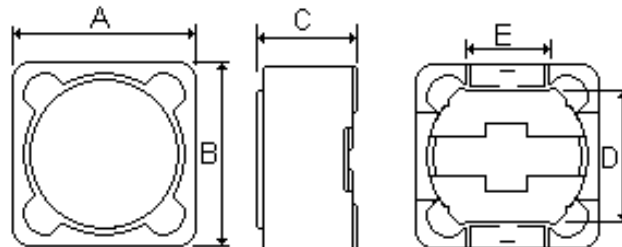
## 2. APPLICATIONS

- OA equipment, Notebook Computer
- LCD televisions
- DC/DC converters etc.

## 3. PRODUCT IDENTIFICATION



## 4. Shape and Dimensions



Unit: mm

| Part     | A        | B        | C        | D   | E   |
|----------|----------|----------|----------|-----|-----|
| MSRH73   | 7.3±0.3  | 7.3±0.3  | 3.4±0.3  | 5.0 | 2.0 |
| MSRH74   | 7.3±0.3  | 7.3±0.3  | 4.2±0.3  | 5.0 | 2.0 |
| MSRH124  | 12.2±0.4 | 12.2±0.4 | 4.5±0.3  | 7.6 | 5.0 |
| MSRH125  | 12.2±0.4 | 12.2±0.4 | 5.7±0.3  | 7.6 | 5.0 |
| MSRH127  | 12.2±0.4 | 12.2±0.4 | 7.5±0.3  | 7.6 | 5.0 |
| MSRH1210 | 12.2±0.4 | 12.2±0.4 | 10.0±0.3 | 7.6 | 5.0 |

## Appendix A: Electrical Characteristics

### I. MSRH73 TYPE INDUCTORS ELECTRICAL CHARACTERISTICS&TEST CONDITIONS

| Part Number  | L (μH) | Tolerance | Test Freq.   | DCR(Ω)Max | Isat(A) |
|--------------|--------|-----------|--------------|-----------|---------|
| MSRH73-1R0NT | 1.0    | ± 30%     | 100kHz,0.25v | 0.025     | 3.60    |
| MSRH73-2R2NT | 2.2    | ± 30%     | 100kHz,0.25v | 0.035     | 2.50    |
| MSRH73-3R3NT | 3.3    | ± 30%     | 1kHz,0.25v   | 0.035     | 2.50    |
| MSRH73-4R7NT | 4.7    | ± 30%     | 1kHz,0.25v   | 0.031     | 2.00    |
| MSRH73-6R8NT | 6.8    | ± 30%     | 1kHz,0.25v   | 0.045     | 1.85    |
| MSRH73-100MT | 10     | ± 20%     | 1kHz,0.25v   | 0.072     | 1.68    |
| MSRH73-120MT | 12     | ± 20%     | 1kHz,0.25v   | 0.098     | 1.52    |
| MSRH73-150MT | 15     | ± 20%     | 1kHz,0.25v   | 0.130     | 1.33    |
| MSRH73-180MT | 18     | ± 20%     | 1kHz,0.25v   | 0.140     | 1.20    |
| MSRH73-220MT | 22     | ± 20%     | 1kHz,0.25v   | 0.190     | 1.07    |
| MSRH73-270MT | 27     | ± 20%     | 1kHz,0.25v   | 0.210     | 0.96    |
| MSRH73-330MT | 33     | ± 20%     | 1kHz,0.25v   | 0.240     | 0.91    |
| MSRH73-390MT | 39     | ± 20%     | 1kHz,0.25v   | 0.320     | 0.77    |
| MSRH73-470MT | 47     | ± 20%     | 1kHz,0.25v   | 0.360     | 0.76    |
| MSRH73-560MT | 56     | ± 20%     | 1kHz,0.25v   | 0.470     | 0.68    |
| MSRH73-680MT | 68     | ± 20%     | 1kHz,0.25v   | 0.520     | 0.61    |
| MSRH73-820MT | 82     | ± 20%     | 1kHz,0.25v   | 0.690     | 0.57    |
| MSRH73-101MT | 100    | ± 20%     | 1kHz,0.25v   | 0.790     | 0.50    |
| MSRH73-121MT | 120    | ± 20%     | 1kHz,0.25v   | 0.890     | 0.49    |
| MSRH73-151MT | 150    | ± 20%     | 1kHz,0.25v   | 1.270     | 0.43    |
| MSRH73-181MT | 180    | ± 20%     | 1kHz,0.25v   | 1.450     | 0.39    |
| MSRH73-221MT | 220    | ± 20%     | 1kHz,0.25v   | 1.650     | 0.35    |
| MSRH73-271MT | 270    | ± 20%     | 1kHz,0.25v   | 2.310     | 0.32    |
| MSRH73-331MT | 330    | ± 20%     | 1kHz,0.25v   | 2.620     | 0.28    |
| MSRH73-391MT | 390    | ± 20%     | 1kHz,0.25v   | 2.940     | 0.26    |
| MSRH73-471MT | 470    | ± 20%     | 1kHz,0.25v   | 4.180     | 0.24    |
| MSRH73-102MT | 1000   | ± 20%     | 1kHz,0.25v   | 9.440     | 0.16    |

### II. MSRH74TYPEINDUCTORSELECTRICALCHARACTERISTICS&TESTCONDITIONS

| Part Number  | L (μH) | Tolerance | Test Freq.   | DCR(Ω)Max | Isat(A) |
|--------------|--------|-----------|--------------|-----------|---------|
| MSRH74-1R0NT | 1.0    | ± 30%     | 100kHz,0.25v | 0.022     | 7.00    |
| MSRH74-2R2NT | 2.2    | ± 30%     | 100kHz,0.25v | 0.028     | 4.20    |
| MSRH74-3R3NT | 3.3    | ± 30%     | 100kHz,0.25v | 0.030     | 3.90    |
| MSRH74-4R7NT | 4.7    | ± 30%     | 100kHz,0.25v | 0.035     | 3.50    |
| MSRH74-6R8NT | 6.8    | ± 30%     | 100kHz,0.25v | 0.040     | 2.50    |
| MSRH74-100MT | 10     | ± 20%     | 1kHz,0.25v   | 0.049     | 1.84    |
| MSRH74-120MT | 12     | ± 20%     | 1kHz,0.25v   | 0.058     | 1.71    |
| MSRH74-150MT | 15     | ± 20%     | 1kHz,0.25v   | 0.081     | 1.47    |
| MSRH74-180MT | 18     | ± 20%     | 1kHz,0.25v   | 0.091     | 1.31    |
| MSRH74-220MT | 22     | ± 20%     | 1kHz,0.25v   | 0.110     | 1.23    |
| MSRH74-330MT | 33     | ± 20%     | 1kHz,0.25v   | 0.170     | 0.96    |
| MSRH74-390MT | 39     | ± 20%     | 1kHz,0.25v   | 0.230     | 0.91    |
| MSRH74-470MT | 47     | ± 20%     | 1kHz,0.25v   | 0.260     | 0.88    |
| MSRH74-560MT | 56     | ± 20%     | 1kHz,0.25v   | 0.350     | 0.75    |
| MSRH74-680MT | 68     | ± 20%     | 1kHz,0.25v   | 0.380     | 0.69    |
| MSRH74-820MT | 82     | ± 20%     | 1kHz,0.25v   | 0.430     | 0.61    |
| MSRH74-101MT | 100    | ± 20%     | 1kHz,0.25v   | 0.610     | 0.60    |
| MSRH74-121MT | 120    | ± 20%     | 1kHz,0.25v   | 0.660     | 0.52    |
| MSRH74-151MT | 150    | ± 20%     | 1kHz,0.25v   | 0.880     | 0.46    |
| MSRH74-181MT | 180    | ± 20%     | 1kHz,0.25v   | 0.980     | 0.42    |
| MSRH74-221MT | 220    | ± 20%     | 1kHz,0.25v   | 1.170     | 0.36    |
| MSRH74-271MT | 270    | ± 20%     | 1kHz,0.25v   | 1.640     | 0.34    |
| MSRH74-331MT | 330    | ± 20%     | 1kHz,0.25v   | 1.860     | 0.32    |
| MSRH74-391MT | 390    | ± 20%     | 1kHz,0.25v   | 2.850     | 0.29    |
| MSRH74-471MT | 470    | ± 20%     | 1kHz,0.25v   | 3.010     | 0.26    |
| MSRH74-561MT | 560    | ± 20%     | 1kHz,0.25v   | 3.620     | 0.23    |
| MSRH74-681MT | 680    | ± 20%     | 1kHz,0.25v   | 4.630     | 0.22    |
| MSRH74-821MT | 820    | ± 20%     | 1kHz,0.25v   | 5.200     | 0.20    |
| MSRH74-102MT | 1000   | ± 20%     | 1kHz,0.25v   | 6.000     | 0.18    |

### III. MSRH124 TYPE INDUCTORS ELECTRICAL CHARACTERISTICS & TEST CONDITIONS

| Part Number   | L(μH) | Tolerance | Test Freq.   | DCR(Ω)Max | Isat(A) |
|---------------|-------|-----------|--------------|-----------|---------|
| MSRH124-1R0NT | 1.0   | ± 30%     | 100kHz,0.25v | 0.008     | 7.00    |
| MSRH124-2R2NT | 2.2   | ± 30%     | 100kHz,0.25v | 0.009     | 5.70    |
| MSRH124-3R3NT | 3.3   | ± 30%     | 100kHz,0.25v | 0.015     | 5.20    |
| MSRH124-4R7NT | 4.7   | ± 30%     | 100kHz,0.25v | 0.018     | 4.90    |
| MSRH124-6R8NT | 6.8   | ± 30%     | 100kHz,0.25v | 0.023     | 4.50    |
| MSRH124-8R2NT | 8.2   | ± 30%     | 100kHz,0.25v | 0.026     | 4.20    |
| MSRH124-100MT | 10    | ± 20%     | 1kHz,0.25v   | 0.028     | 4.00    |
| MSRH124-120MT | 12    | ± 20%     | 1kHz,0.25v   | 0.038     | 3.50    |
| MSRH124-150MT | 15    | ± 20%     | 1kHz,0.25v   | 0.050     | 3.20    |
| MSRH124-180MT | 18    | ± 20%     | 1kHz,0.25v   | 0.057     | 3.10    |
| MSRH124-220MT | 22    | ± 20%     | 1kHz,0.25v   | 0.066     | 2.90    |
| MSRH124-270MT | 27    | ± 20%     | 1kHz,0.25v   | 0.080     | 2.80    |
| MSRH124-330MT | 33    | ± 20%     | 1kHz,0.25v   | 0.097     | 2.70    |
| MSRH124-390MT | 39    | ± 20%     | 1kHz,0.25v   | 0.132     | 2.10    |
| MSRH124-470MT | 47    | ± 20%     | 1kHz,0.25v   | 0.150     | 1.90    |
| MSRH124-560MT | 56    | ± 20%     | 1kHz,0.25v   | 0.190     | 1.80    |
| MSRH124-680MT | 68    | ± 20%     | 1kHz,0.25v   | 0.220     | 1.50    |
| MSRH124-820MT | 82    | ± 20%     | 1kHz,0.25v   | 0.260     | 1.30    |
| MSRH124-101MT | 100   | ± 20%     | 1kHz,0.25v   | 0.308     | 1.20    |
| MSRH124-121MT | 120   | ± 20%     | 1kHz,0.25v   | 0.380     | 1.10    |
| MSRH124-151MT | 150   | ± 20%     | 1kHz,0.25v   | 0.530     | 0.95    |
| MSRH124-181MT | 180   | ± 20%     | 1kHz,0.25v   | 0.620     | 0.85    |
| MSRH124-221MT | 220   | ± 20%     | 1kHz,0.25v   | 0.700     | 0.80    |
| MSRH124-271MT | 270   | ± 20%     | 1kHz,0.25v   | 0.876     | 0.60    |
| MSRH124-331MT | 330   | ± 20%     | 1kHz,0.25v   | 0.990     | 0.50    |
| MSRH124-471MT | 470   | ± 20%     | 1kHz,0.25v   | 1.300     | 0.40    |
| MSRH124-152MT | 1500  | ± 20%     | 1kHz,0.25v   | 4.000     | 0.29    |
| MSRH124-333MT | 33000 | ± 20%     | 1kHz,0.25v   | 95.000    | 0.07    |

### III. MSRH125 TYPE INDUCTORS ELECTRICAL CHARACTERISTICS & TEST CONDITIONS

| Part Number   | L(μH) | Tolerance | Test Freq.   | DCR(Ω)Max | Isat(A) |
|---------------|-------|-----------|--------------|-----------|---------|
| MSRH125-1R0NT | 1.0   | ± 30%     | 100kHz,0.25v | 0.010     | 8.00    |
| MSRH125-2R2NT | 2.2   | ± 30%     | 100kHz,0.25v | 0.014     | 7.80    |
| MSRH125-3R3NT | 3.3   | ± 30%     | 100kHz,0.25v | 0.014     | 7.60    |
| MSRH125-4R7NT | 4.7   | ± 30%     | 100kHz,0.25v | 0.020     | 5.60    |
| MSRH125-6R8NT | 6.8   | ± 30%     | 100kHz,0.25v | 0.020     | 5.20    |
| MSRH125-8R2NT | 8.2   | ± 30%     | 100kHz,0.25v | 0.021     | 4.50    |
| MSRH125-100MT | 10    | ± 20%     | 1kHz,0.25v   | 0.025     | 4.20    |
| MSRH125-120MT | 12    | ± 20%     | 1kHz,0.25v   | 0.027     | 3.50    |
| MSRH125-150MT | 15    | ± 20%     | 1kHz,0.25v   | 0.030     | 3.30    |
| MSRH125-180MT | 18    | ± 20%     | 1kHz,0.25v   | 0.034     | 3.00    |
| MSRH125-220MT | 22    | ± 20%     | 1kHz,0.25v   | 0.042     | 2.80    |
| MSRH125-270MT | 27    | ± 20%     | 1kHz,0.25v   | 0.051     | 2.30    |
| MSRH125-330MT | 33    | ± 20%     | 1kHz,0.25v   | 0.065     | 2.10    |
| MSRH125-390MT | 39    | ± 20%     | 1kHz,0.25v   | 0.068     | 2.00    |
| MSRH125-470MT | 47    | ± 20%     | 1kHz,0.25v   | 0.075     | 1.80    |
| MSRH125-560MT | 56    | ± 20%     | 1kHz,0.25v   | 0.110     | 1.70    |
| MSRH125-680MT | 68    | ± 20%     | 1kHz,0.25v   | 0.120     | 1.50    |
| MSRH125-820MT | 82    | ± 20%     | 1kHz,0.25v   | 0.140     | 1.40    |
| MSRH125-101MT | 100   | ± 20%     | 1kHz,0.25v   | 0.198     | 1.30    |

### III. MSRH125 TYPE INDUCTORS ELECTRICAL CHARACTERISTICS & TEST CONDITIONS

| Part Number   | L (μ H) | Tolerance | Test Freq. | DCR(Ω)Max | Isat(A) |
|---------------|---------|-----------|------------|-----------|---------|
| MSRH125-121MT | 120     | ± 20%     | 1kHz,0.25v | 0.220     | 1.10    |
| MSRH125-151MT | 150     | ± 20%     | 1kHz,0.25v | 0.230     | 1.00    |
| MSRH125-181MT | 180     | ± 20%     | 1kHz,0.25v | 0.290     | 0.90    |
| MSRH125-221MT | 220     | ± 20%     | 1kHz,0.25v | 0.400     | 0.80    |
| MSRH125-271MT | 270     | ± 20%     | 1kHz,0.25v | 0.460     | 0.75    |
| MSRH125-331MT | 330     | ± 20%     | 1kHz,0.25v | 0.510     | 0.68    |
| MSRH125-391MT | 390     | ± 20%     | 1kHz,0.25v | 0.690     | 0.65    |
| MSRH125-471MT | 470     | ± 20%     | 1kHz,0.25v | 0.770     | 0.58    |
| MSRH125-561MT | 560     | ± 20%     | 1kHz,0.25v | 0.860     | 0.54    |
| MSRH125-681MT | 680     | ± 20%     | 1kHz,0.25v | 1.200     | 0.48    |
| MSRH125-821MT | 820     | ± 20%     | 1kHz,0.25v | 1.340     | 0.43    |
| MSRH125-102MT | 1000    | ± 20%     | 1kHz,0.25v | 1.900     | 0.40    |
| MSRH125-472MT | 4700    | ± 20%     | 1kHz,0.25v | 8.280     | 0.30    |
| MSRH125-802MT | 8000    | ± 20%     | 1kHz,0.25v | 15.000    | 0.22    |
| MSRH125-103MT | 10000   | ± 20%     | 1kHz,0.25v | 20.000    | 0.12    |

### IV. MSRH127 TYPE INDUCTORS ELECTRICAL CHARACTERISTICS & TEST CONDITIONS

| Part Number   | L (μ H) | Tolerance | Test Freq.   | DCR(Ω)Max | Isat(A) |
|---------------|---------|-----------|--------------|-----------|---------|
| MSRH127-1R0NT | 1.0     | ± 30%     | 100kHz,0.25v | 0.0070    | 10.00   |
| MSRH127-2R2NT | 2.2     | ± 30%     | 100kHz,0.25v | 0.0115    | 8.00    |
| MSRH127-3R3NT | 3.3     | ± 30%     | 100kHz,0.25v | 0.0135    | 8.00    |
| MSRH127-4R7NT | 4.7     | ± 30%     | 100kHz,0.25v | 0.0158    | 7.00    |
| MSRH127-6R8NT | 6.8     | ± 30%     | 100kHz,0.25v | 0.0190    | 6.80    |
| MSRH127-8R2NT | 8.2     | ± 30%     | 100kHz,0.25v | 0.0200    | 5.90    |
| MSRH127-100MT | 10      | ± 20%     | 1kHz,0.25v   | 0.0210    | 5.60    |
| MSRH127-120MT | 12      | ± 20%     | 1kHz,0.25v   | 0.0240    | 4.90    |
| MSRH127-150MT | 15      | ± 20%     | 1kHz,0.25v   | 0.0270    | 4.50    |
| MSRH127-180MT | 18      | ± 20%     | 1kHz,0.25v   | 0.0392    | 3.90    |
| MSRH127-220MT | 22      | ± 20%     | 1kHz,0.25v   | 0.0432    | 3.60    |
| MSRH127-270MT | 27      | ± 20%     | 1kHz,0.25v   | 0.0459    | 3.40    |
| MSRH127-330MT | 33      | ± 20%     | 1kHz,0.25v   | 0.0648    | 3.00    |
| MSRH127-390MT | 39      | ± 20%     | 1kHz,0.25v   | 0.0729    | 2.75    |
| MSRH127-470MT | 47      | ± 20%     | 1kHz,0.25v   | 0.1000    | 2.50    |
| MSRH127-560MT | 56      | ± 20%     | 1kHz,0.25v   | 0.110     | 2.35    |
| MSRH127-680MT | 68      | ± 20%     | 1kHz,0.25v   | 0.140     | 2.10    |
| MSRH127-820MT | 82      | ± 20%     | 1kHz,0.25v   | 0.160     | 1.95    |
| MSRH127-101MT | 100     | ± 20%     | 1kHz,0.25v   | 0.220     | 1.70    |
| MSRH127-121MT | 120     | ± 20%     | 1kHz,0.25v   | 0.250     | 1.60    |
| MSRH127-151MT | 150     | ± 20%     | 1kHz,0.25v   | 0.280     | 1.42    |
| MSRH127-181MT | 180     | ± 20%     | 1kHz,0.25v   | 0.350     | 1.30    |
| MSRH127-221MT | 220     | ± 20%     | 1kHz,0.25v   | 0.390     | 1.16    |
| MSRH127-271MT | 270     | ± 20%     | 1kHz,0.25v   | 0.560     | 1.06    |
| MSRH127-331MT | 330     | ± 20%     | 1kHz,0.25v   | 0.640     | 0.95    |
| MSRH127-391MT | 390     | ± 20%     | 1kHz,0.25v   | 0.700     | 0.88    |
| MSRH127-471MT | 470     | ± 20%     | 1kHz,0.25v   | 0.980     | 0.79    |
| MSRH127-561MT | 560     | ± 20%     | 1kHz,0.25v   | 1.070     | 0.73    |
| MSRH127-681MT | 680     | ± 20%     | 1kHz,0.25v   | 1.460     | 0.67    |
| MSRH127-821MT | 820     | ± 20%     | 1kHz,0.25v   | 1.640     | 0.60    |
| MSRH127-102MT | 1000    | ± 20%     | 1kHz,0.25v   | 1.820     | 0.55    |

## V. MSRH1210 TYPE INDUCTORS ELECTRICAL CHARACTERISTICS & TEST CONDITIONS

| Part Number    | L( $\mu$ H) | Tolerance  | Test Freq.   | DCR( $\Omega$ )Max | Isat(A) |
|----------------|-------------|------------|--------------|--------------------|---------|
| MSRH1210-1R0NT | 1.00        | $\pm 30\%$ | 100kHz,0.25v | 0.0070             | 10.1    |
| MSRH1210-2R2NT | 2.20        | $\pm 30\%$ | 100kHz,0.25v | 0.0100             | 8.59    |
| MSRH1210-3R3NT | 3.30        | $\pm 30\%$ | 100kHz,0.25v | 0.0117             | 8.00    |
| MSRH1210-4R7NT | 4.70        | $\pm 30\%$ | 100kHz,0.25v | 0.0134             | 7.55    |
| MSRH1210-6R8NT | 6.80        | $\pm 30\%$ | 100kHz,0.25v | 0.0168             | 6.86    |
| MSRH1210-8R2NT | 8.20        | $\pm 30\%$ | 100kHz,0.25v | 0.0185             | 6.68    |
| MSRH1210-100MT | 10.0        | $\pm 20\%$ | 1kHz,0.25v   | 0.0200             | 6.51    |
| MSRH1210-120MT | 12.0        | $\pm 20\%$ | 1kHz,0.25v   | 0.0220             | 6.20    |
| MSRH1210-150MT | 15.0        | $\pm 20\%$ | 1kHz,0.25v   | 0.0255             | 5.76    |
| MSRH1210-180MT | 18.0        | $\pm 20\%$ | 1kHz,0.25v   | 0.0273             | 5.57    |
| MSRH1210-220MT | 22.0        | $\pm 20\%$ | 1kHz,0.25v   | 0.0305             | 5.27    |
| MSRH1210-270MT | 27.0        | $\pm 20\%$ | 1kHz,0.25v   | 0.0329             | 5.07    |
| MSRH1210-330MT | 33.0        | $\pm 20\%$ | 1kHz,0.25v   | 0.0390             | 4.66    |
| MSRH1210-390MT | 39.0        | $\pm 20\%$ | 1kHz,0.25v   | 0.0514             | 4.06    |
| MSRH1210-470MT | 47.0        | $\pm 20\%$ | 1kHz,0.25v   | 0.0590             | 3.79    |
| MSRH1210-560MT | 56.0        | $\pm 20\%$ | 1kHz,0.25v   | 0.0638             | 3.64    |
| MSRH1210-680MT | 68.0        | $\pm 20\%$ | 1kHz,0.25v   | 0.0830             | 3.19    |
| MSRH1210-820MT | 82.0        | $\pm 20\%$ | 1kHz,0.25v   | 0.0940             | 3.00    |
| MSRH1210-101MT | 100         | $\pm 20\%$ | 1kHz,0.25v   | 0.125              | 2.60    |
| MSRH1210-121MT | 120         | $\pm 20\%$ | 1kHz,0.25v   | 0.140              | 2.46    |
| MSRH1210-151MT | 150         | $\pm 20\%$ | 1kHz,0.25v   | 0.180              | 2.17    |
| MSRH1210-181MT | 180         | $\pm 20\%$ | 1kHz,0.25v   | 0.200              | 2.06    |
| MSRH1210-221MT | 220         | $\pm 20\%$ | 1kHz,0.25v   | 0.246              | 1.86    |
| MSRH1210-271MT | 270         | $\pm 20\%$ | 1kHz,0.25v   | 0.324              | 1.62    |
| MSRH1210-331MT | 330         | $\pm 20\%$ | 1kHz,0.25v   | 0.362              | 1.53    |
| MSRH1210-391MT | 390         | $\pm 20\%$ | 1kHz,0.25v   | 0.396              | 1.46    |
| MSRH1210-471MT | 470         | $\pm 20\%$ | 1kHz,0.25v   | 0.501              | 1.30    |
| MSRH1210-561MT | 560         | $\pm 20\%$ | 1kHz,0.25v   | 0.546              | 1.25    |
| MSRH1210-681MT | 680         | $\pm 20\%$ | 1kHz,0.25v   | 0.685              | 1.11    |
| MSRH1210-821MT | 820         | $\pm 20\%$ | 1kHz,0.25v   | 0.836              | 0.98    |
| MSRH1210-102MT | 1000        | $\pm 20\%$ | 1kHz,0.25v   | 0.955              | 0.94    |

Products with other electrical characteristic can be provided upon customer's request. Please contact your local sales.

## X-ON Electronics

Largest Supplier of Electrical and Electronic Components

*Click to view similar products for [Fixed Inductors](#) category:*

*Click to view products by [MetalLions](#) manufacturer:*

Other Similar products are found below :

[CR32NP-100KC](#) [70F224AI](#) [MHQ1005P10NJ](#) [MHQ1005P1N0S](#) [MHQ1005P2N4S](#) [MHQ1005P3N6S](#) [MHQ1005P5N1S](#) [MHQ1005P8N2J](#)  
[PE-53601NL](#) [PE-53602NL](#) [PG0936.113NLT](#) [9220-20](#) [9310-16](#) [PM06-2N7](#) [PM06-39NJ](#) [A01TK](#) [1206CS-471XJ](#) [HC2-R47-R](#) [HC8-1R2-R](#)  
[HCF1305-3R3-R](#) [1206CS-151XG](#) [RCH664NP-4R7M](#) [RCP1317NP-391L](#) [DH2280-4R7M](#) [DS1608C-106](#) [B10TJ](#) [B82498B3101J000](#) [ELJ-](#)  
[RE27NJF2](#) [1812CS-153XJ](#) [1812CS-183XJ](#) [1812CS-223XJ](#) [1812LS-104XJ](#) [1812LS-105XJ](#) [1812LS-124XJ](#) [1812LS-154XJ](#) [1812LS-223XJ](#)  
[1812LS-224XJ](#) [1812LS-563XJ](#) [1812LS-683XJ](#) [1812LS-824XJ](#) [NIN-FB101JTR110F](#) [NIN-FB471JTR62F](#) [NIN-FC1R5JTR220F](#) [NIN-](#)  
[HCR15JTRF](#) [NIN-HCR33JTRF](#) [NIN-HDR22JTRF](#) [NIN-HDR82JTRF](#) [NIN-HK2N7STRF](#) [NIN-PA150KTR370F](#) [NIN-PB100KTR550F](#)