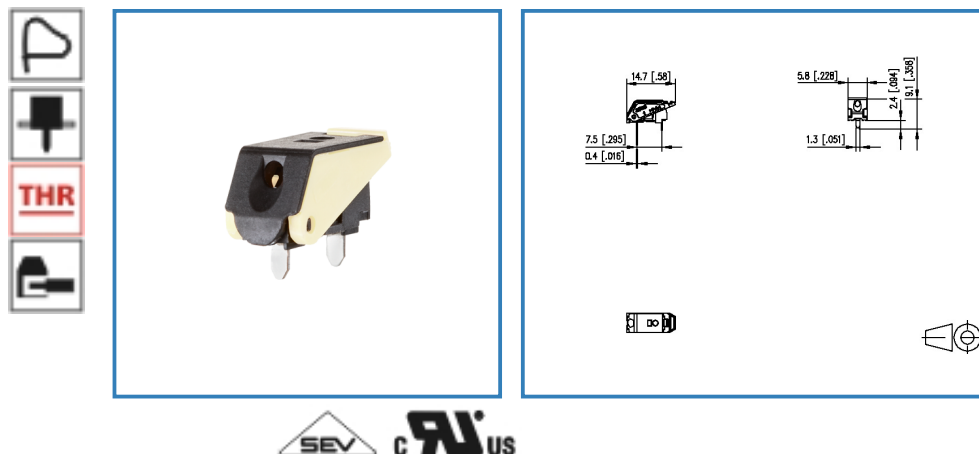


# Data Sheet

## SR99S01VBNN0001 creme white

### Illustration



see enlarged drawing at the end of the document

### Product specification

- spring clamp terminal block, THR solderable, double solder pins
- direction of connection 90°
- fittable without loss of poles
- color white
- finger push-button
- test point and wire connection indicator
- Variants: black, creme white, yellow, green, red, blue, orange

# Data Sheet

## SR99S01VBNN0001 creme white

### Technical Data



#### General Data

|                           |         |
|---------------------------|---------|
| Solder pin length         | 2.4 mm  |
| min. number of poles      | 1       |
| max. number of poles      | 1       |
| Insulating material class | CTI 600 |
| protection category       | IP 00   |
| Min. insul. strip length  | 7 mm    |

#### Connection data

|                            |   |
|----------------------------|---|
| Rated wiring solid wire    | 0.2 - 1.5 mm <sup>2</sup> / AWG 24 - 16 |
| Rated wiring stranded wire | 0.2 - 1.5 mm <sup>2</sup> / AWG 24 - 16 |

#### Approvals

|   |                   |
|---|-------------------|
|  V / A / AWG          | 300 / 9 / 24 - 16 |
|  0,75 mm <sup>2</sup> | T60               |

#### Material

|                             |              |
|-----------------------------|--------------|
| insulating material         | PA66/6T      |
| flammability class          | V0           |
| spring material             | Spring steel |
| contact material            | CuSn         |
| Glow-Wire Flammability GWFI | 960          |
| Glow-Wire Flammability GWIT | 775          |
| contact surface             | Sn           |

#### Climatic properties

|                         |        |
|-------------------------|--------|
| upper limit temperature | 105 °C |
| lower limit temperature | -40 °C |

#### General

|               |                                    |
|---------------|------------------------------------|
| solderability | Acc. to IPC/JEDEC J-STD-020D-MSL 1 |
| Tolerance     | ISO 2768 -mH                       |



# Data Sheet

## SR99S01VBNN0001 creme white

Page 3/4

P/N

SR99S01VBNN0001

2017/07/11

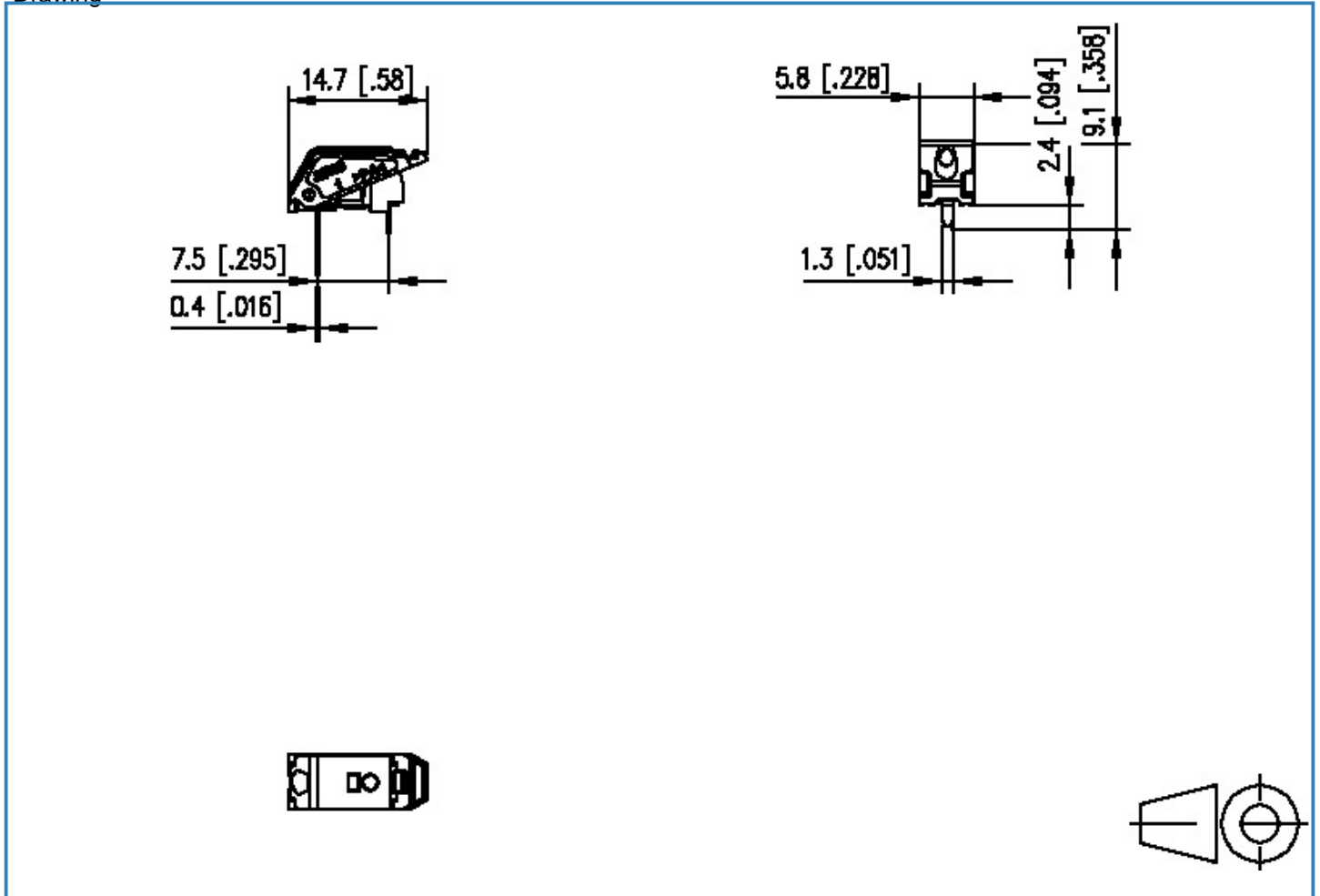


# Data Sheet

## SR99S01VBNN0001 creme white

### Illustration

Drawing



© 2017 METZ CONNECT - Technische Änderungen vorbehalten! Subject to modifications! Sous réserve de modifications techniques!



## X-ON Electronics

Largest Supplier of Electrical and Electronic Components

*Click to view similar products for [Metz manufacturer](#):*

Other Similar products are found below :

[142M4D95050](#) [AST0410604](#) [31249103](#) [ASP0631006](#) [142M2X15020](#) [4897-227G](#) [142M2X19020](#) [142M2X25005](#) [ASP0440222](#) [1108861321](#)  
[1108311319](#) [1108501319](#) [11089313](#) [142M2X1C050](#) [832WC-3L](#) [130920-E](#) [150240C30610E](#) [11027605](#) [1108841319](#) [110304412004](#)  
[1108831326](#) [15024AD206-E](#) [150240C30310S](#) [135015-SSC-E](#) [1528SBGT19E](#) [1401110012KE](#) [142M2X15010](#) [31189102](#) [11085813](#) [810-500](#)  
[31336104](#) [ASP0430922](#) [AST0450504](#) [SP06502VBNF](#) [142M1D11100](#) [142M4D15100](#) [142M1D19020](#) [31213102](#) [31251104](#) [31359104](#)  
[AST0820406](#) [834B-375ML](#) [8DG-30-1](#) [841ER-1.17L](#) [31009105](#) [31020205](#) [31024102](#) [31027103](#) [ASP0251204](#) [1308455055-E](#)