

# Prototyping

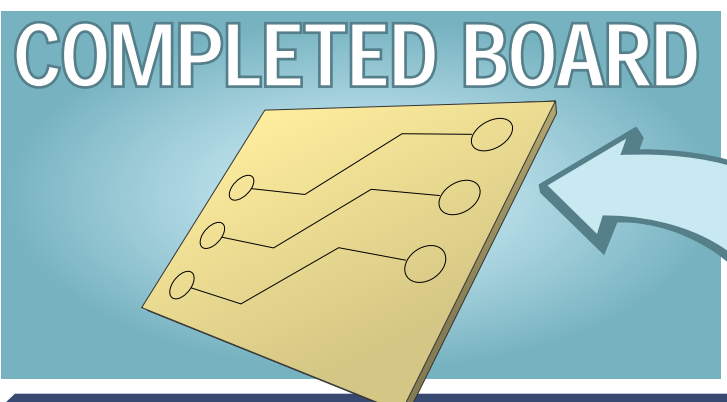
## WHO IS BUYING PROTOTYPING MATERIALS?

- 4 Education institutes
  - Secondary schools
  - Post secondary schools
- 4 Technical institutes
- 4 Engineers
  - Automotive
  - Aerospace
  - Electronics
- 4 Hobbyists



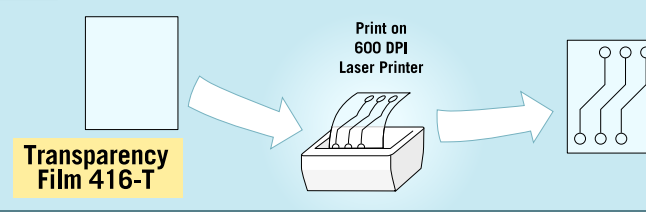
## WHAT IS PROTOTYPING?

It is the process of creating your own circuitboard. Computer generated artwork defines the copper traces on the resulting board, making virtually any design possible.

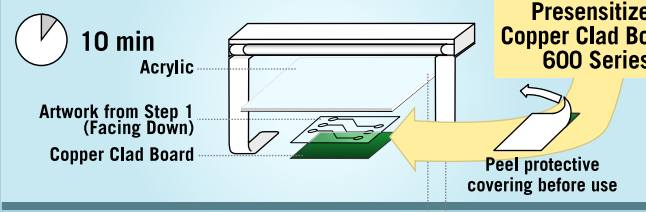


## THE PROCESS

### 1 Create Artwork



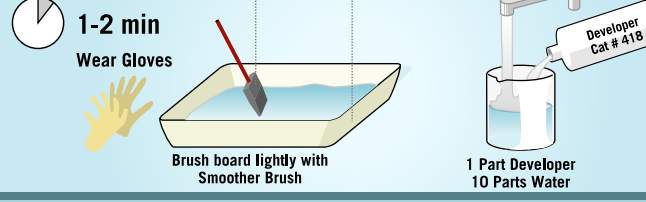
### 2 Expose



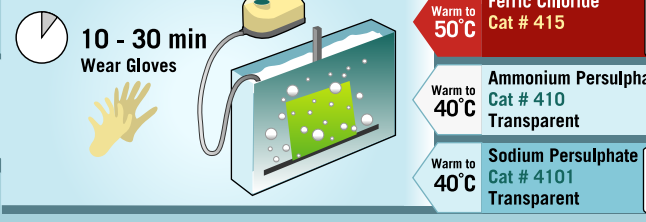
Exposure Kit 4

Photofabrication Kit 4

### 3 Develop



### 4 Etch



E-mail :: [salesusa@mgchemicals.com](mailto:salesusa@mgchemicals.com)

Phone 1-800-201-8822 Ext. 130  
1-604-888-3084 Ext. 130

Fax 1-604-888-7754  
1-800-708-9888

Visit [www.mgchemicals.com](http://www.mgchemicals.com)  
For technical specifications, MSDS, tech support and more

ISO 9001 Reg

# Merchandise Guide

## Prototyping Kits



Stock Code	Product Name	Form	Case Qty
416-K	Photofabrication Kit	Kit	1
416-X	Exposure Kit	Kit	1
416-ES	Etching Process Kit - Student	Kit	1
416-E	Premium Etching Kit	Kit	1

## Boards 1 / 16"



Stock Code	Product Name	Size	Form	Case Qty
503	Single Sided Copper Clad Board	3X5	CCB	5
506	Single Sided Copper Clad Board	4X6	CCB	5
509	Single Sided Copper Clad Board	6X6	CCB	5
512	Single Sided Copper Clad Board	6X9	CCB	5
515	Single Sided Copper Clad Board	8X10	CCB	5
550	Double Sided Copper Clad Board	6X6	CCB	5
555	Double Sided Copper Clad Board	12X12	CCB	5
603	Single Sided Copper Clad Board Presensitized	3X5	CCB	5
606	Single Sided Copper Clad Board Presensitized	4X6	CCB	5
609	Single Sided Copper Clad Board Presensitized	6X6	CCB	5
612	Single Sided Copper Clad Board Presensitized	6X9	CCB	5
630	Single Sided Copper Clad Board Presensitized	8X12	CCB	5
650	Double Sided Copper Clad Board Presensitized	6X6	CCB	5
660	Double Sided Copper Clad Board Presensitized	6X9	CCB	5

## Prototyping Chemicals



### Developer

Stock Code	Product Name	Size	Form	Case Qty
418-500ML	Developer	17 oz	Liquid	10

### Ferric Chloride Copper Etchants

Stock Code	Product Name	Size	Form	Case Qty
415-115G	Ferric Chloride Powder, makes one pint	4 oz	Powder	5
415-500ML	Ferric Chloride Solution	17 oz	Liquid	10
415-1L	Ferric Chloride Solution	33 oz	Liquid	6
415-4L	Ferric Chloride Solution	1 gallon	Liquid	1

### Sodium Persulphate Copper Etchant

Stock Code	Product Name	Size	Form	Case Qty
4101-1KG	Sodium Persulphate	2.2 lbs.	Crystals	6

### Ammonium Persulphate Copper Etchant

Stock Code	Product Name	Size	Form	Case Qty
410-1KG	Ammonium Persulphate	2.2 lbs.	Crystals	6

### Liquid Tin

Stock Code	Product Name	Size	Form	Case Qty
421-500ML	Liquid Tin	17 oz	Liquid	4

## Prototyping Accessories



Stock Code	Product Name	Size	Form	Case Qty
416-T	Transparency Film, 5 Per Envelope		Sheets	1
416-RP	Etch Resist Pen		Pen	2
8420-P	Silver Print - Conductive Pen	8.5 grams	Pen	2
842-20G	Silver Print	20 grams	Liquid	1
843-250G	Silver Coated Copper Print - Bulk	250 grams	Liquid	1
840-20G	Nickel Print	20 grams	Liquid	5

Refer to website [www.mgchemicals.com/prototyping](http://www.mgchemicals.com/prototyping) for more prototyping products

E-mail :: [salesusa@mgchemicals.com](mailto:salesusa@mgchemicals.com)

Phone

1-800-201-8822 Ext. 130

1-604-888-3084 Ext. 130

Fax

1-604-888-7754

1-800-708-9888

Visit

[www.mgchemicals.com](http://www.mgchemicals.com)

For technical specifications,  
MSDS, tech support and more

ISO 9001 Reg

## X-ON Electronics

Largest Supplier of Electrical and Electronic Components

*Click to view similar products for [Copper Clad Boards](#) category:*

*Click to view products by [MG Chemicals](#) manufacturer:*

Other Similar products are found below :

[510-1](#) [510-3](#) [510-5](#) [510-6](#) [510-7](#) [510-7A](#) [510-8](#) [511-4](#) [511-5](#) [511-6](#) [511-7](#) [511-8](#) [520-3](#) [520-4](#) [520-5](#) [520-8](#) [610-6](#) [610-8](#) [611-4](#) [611-7](#)  
[611-8](#) [12X12C1](#) [550](#) [586](#) [589](#) [540](#) [521](#) [512](#) [503](#) [689](#) [609](#) [603](#) [587](#) [510-2](#) [511-1](#) [511-2](#) [520-1](#) [520-2](#) [520-6](#) [588](#) [610-2](#) [610-4](#) [610-5](#) [611-2](#)  
[611-5](#) [611-6](#) [620-2](#) [620-4](#) [620-6](#) [575](#)