



BRIGHTTEK
BRIGHTTEK (EUROPE) LIMITED

Brighten up The World With LED!



ISO/TS 16949:2009



BS EN ISO 14001:2004



QC 080000 IECQ HSPM

PRODUCT DATASHEET

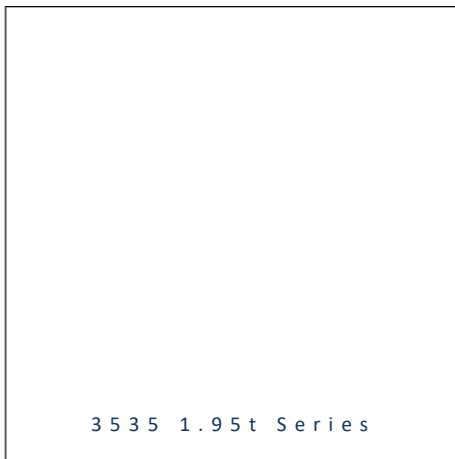


- ▶ Ceramic High Power
- ▶ 3535 1.95t Series
- ▶ Red / Green / Blue

NOM53S12



Release Date: 09 October 2020 Version: A1.0



3 5 3 5 1 . 9 5 t S e r i e s

3535 1.95t Series

RoHS
Compliant



FEATURES (Red/Green/Blue*):

- **Package:** Ceramic SMT Package with Silicon Lens
- **Forward Current:** 350/350/350mA
- **Forward Voltage (typ.):** 2.2/3.2/3.2V
- **Luminous Flux (typ.):** 35/75/15lm@350mA
- **Colour:** Red/Green/Blue
- **Wavelength:** 627/525/460nm
- **Viewing angle:** 125°
- **Materials:**
 - Die: AlGaInP/InGaN/InGaN
 - Resin: Silicon (Water Clear)
- **Operating Temperature:** -40~+80°C
- **Storage Temperature:** -40~+100°C
- **Grouping parameters:**
 - Forward voltage
 - Luminous flux
 - Wavelength
- **Soldering methods:** Reflow soldering
- **Preconditioning:** MSL 3 according to J-STD020
- **Packing:** 12mm tape Max.1000pcs/reel, ø180mm (7")

* In the order of Red/Green/Blue.

APPLICATIONS:

- Decoration Lighting
- Wall Washer
- Spot Light
- Outdoor Lighting
- Mini Projector
- Architectural Lighting
- Commercial Lighting
- Stage Lighting

CHARACTERISTICS:

Absolute Maximum Characteristics (Ta=25°C)

| Parameter | Symbol | Ratings | Unit |
|---|------------------|----------|------|
| Maximum Forward Current | I _{MAX} | 350 | mA |
| Pulse Current D=0.01s Duty 1/10 | I _{FP} | 500 | mA |
| Reverse Voltage | V _R | 5 | V |
| Reverse Current @5V | I _R | 10 | μA |
| Junction Temperature | T _J | 115 | °C |
| Thermal Resistance Junction to Solder Point | R _{TH} | 20 | °C/W |
| Operating Temperature | T _{OPR} | -40~+80 | °C |
| Storage Temperature | T _{STG} | -40~+100 | °C |

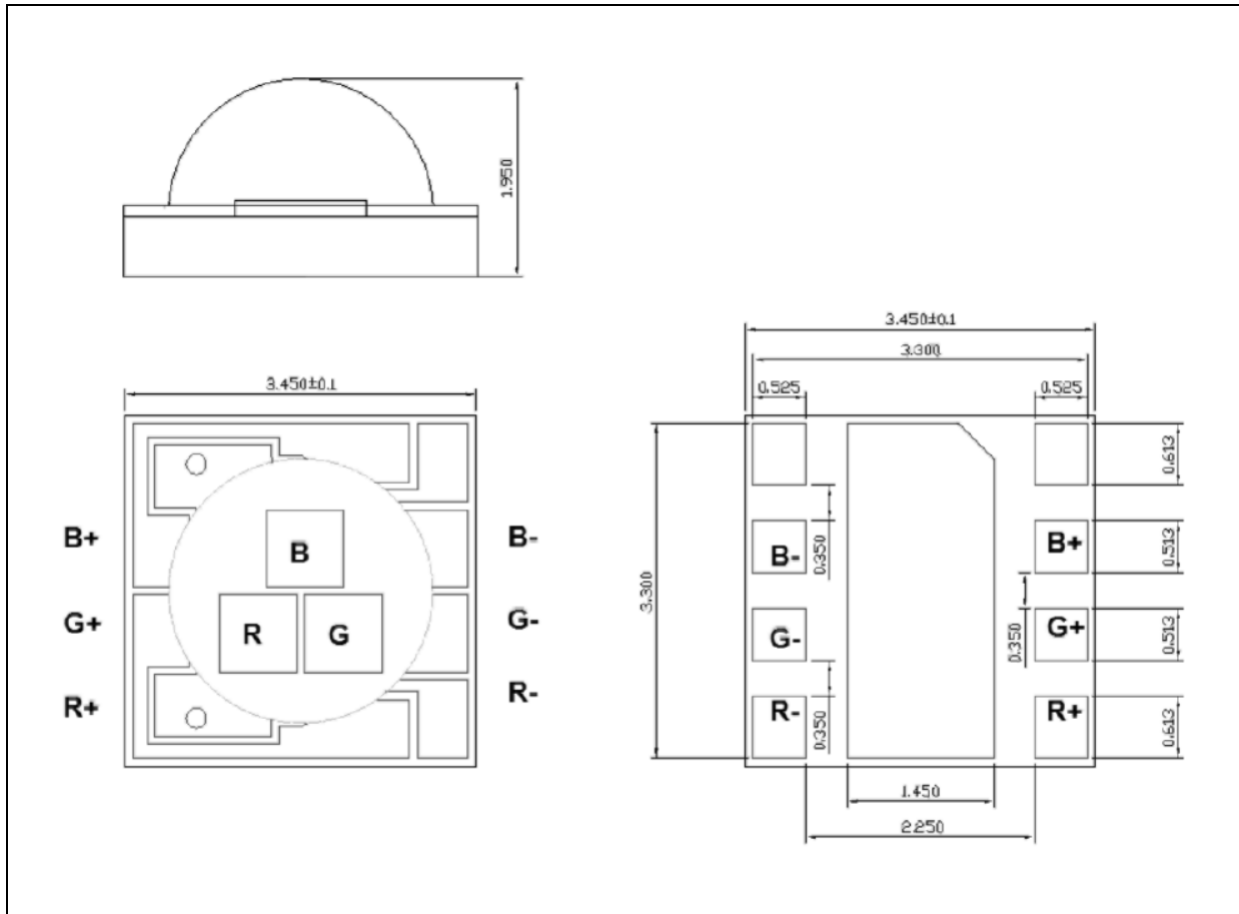
Electrical & Optical Characteristics (Ta=25°C)

| Parameter | Symbol | Values | | | Unit | Test Condition |
|-------------------------|-------------------|--------|------|------|------|-----------------------|
| | | Min. | Typ. | Max. | | |
| Red - Forward Voltage | V _F | 1.8 | 2.2 | 2.6 | V | I _F =350mA |
| Red - Luminous Flux | Φ _V | 30 | --- | 40 | lm | I _F =350mA |
| Red - Wavelength | W _P | 620 | --- | 635 | nm | I _F =350mA |
| Green - Forward Voltage | V _F | 2.8 | 3.2 | 3.6 | V | I _F =350mA |
| Green - Luminous Flux | Φ _V | 70 | --- | 80 | lm | I _F =350mA |
| Green - Wavelength | W _P | 515 | --- | 530 | nm | I _F =350mA |
| Blue - Forward Voltage | V _F | 2.8 | 3.2 | 3.6 | V | I _F =350mA |
| Blue - Luminous Flux | Φ _V | 10 | --- | 20 | lm | I _F =350mA |
| Blue - Wavelength | W _P | 450 | --- | 465 | nm | I _F =350mA |
| Viewing Angle | 2θ _{1/2} | --- | 125 | --- | deg | I _F =350mA |

1. Luminous intensity (I_v) ±5%, Forward Voltage (V_F) ±0.1V

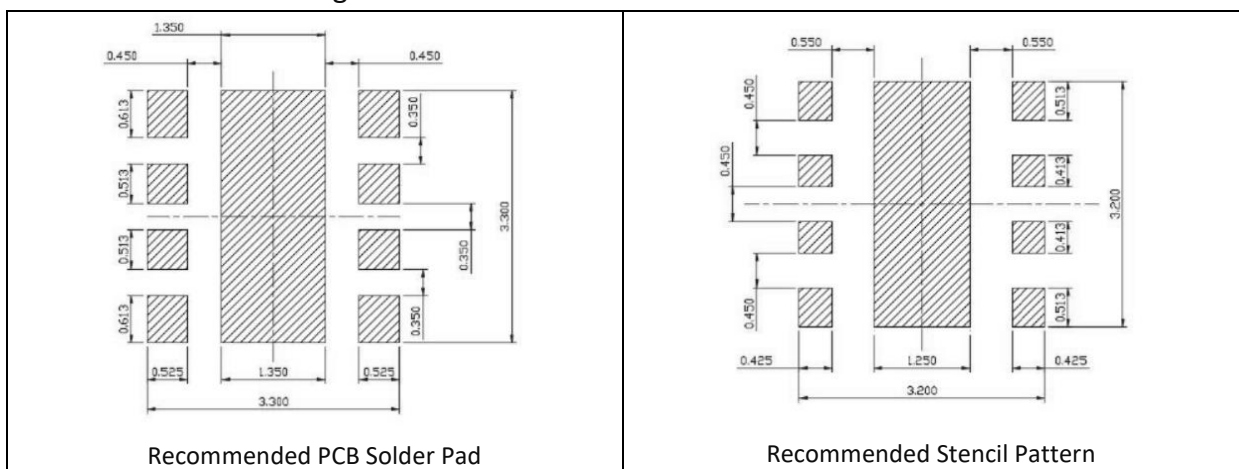
OUTLINE DIMENSION:

Package Dimension:



1. All dimensions are in millimetre (mm).
2. Tolerance ± 0.1 mm, unless otherwise noted.

Recommended Soldering Pad Dimension:



1. Dimensions are in millimetre (mm).
2. Tolerance ± 0.1 mm with angle tolerance $\pm 0.5^\circ$.

BINNING GROUPS:

 Forward Voltage Classifications ($I_F = 350\text{mA}$):

| Code | | Min. | Max. | Unit |
|------|---|------|------|------|
| VA | R | 1.8 | 2.2 | V |
| | | 2.2 | 2.6 | |
| | G | 2.8 | 3.2 | |
| | | 3.2 | 3.6 | |
| | B | 2.8 | 3.2 | |
| | | 3.2 | 3.6 | |

 CCT/Wavelength Classifications ($I_F = 350\text{mA}$):

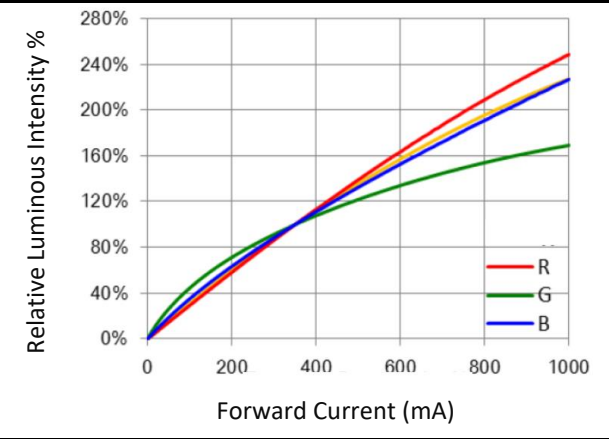
| Code | Min. | Max. | Unit |
|-------|------|------|------|
| Red | 620 | 635 | nm |
| Green | 515 | 530 | nm |
| Blue | 450 | 465 | nm |

 Lumen Flux Classifications ($I_F = 350\text{mA}$):

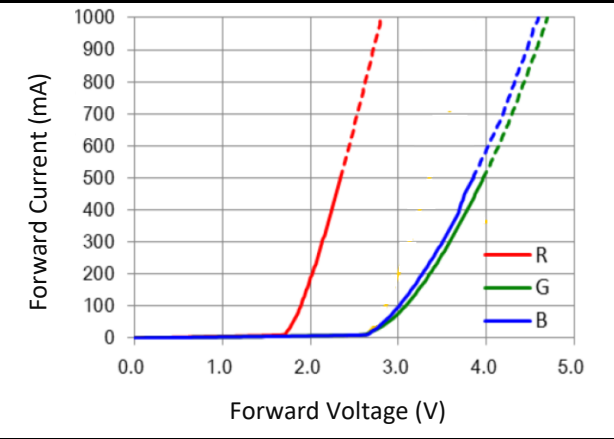
| Code | Min. | Max. | Unit |
|-------|------|------|------|
| Red | 30 | 40 | lm |
| Green | 70 | 80 | lm |
| Blue | 10 | 20 | lm |

ELECTRO-OPTICAL CHARACTERISTICS:

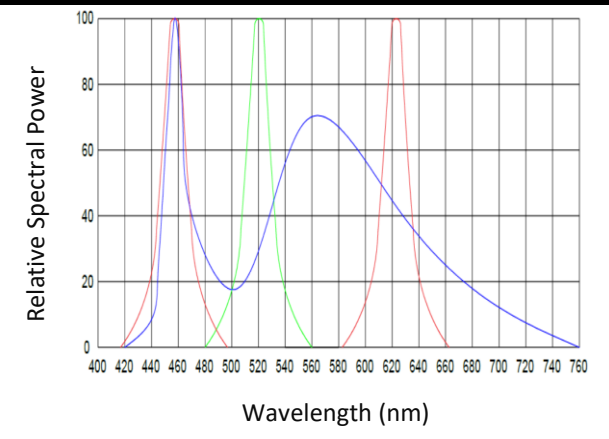
Relative Luminous Intensity v.s. Forward Current



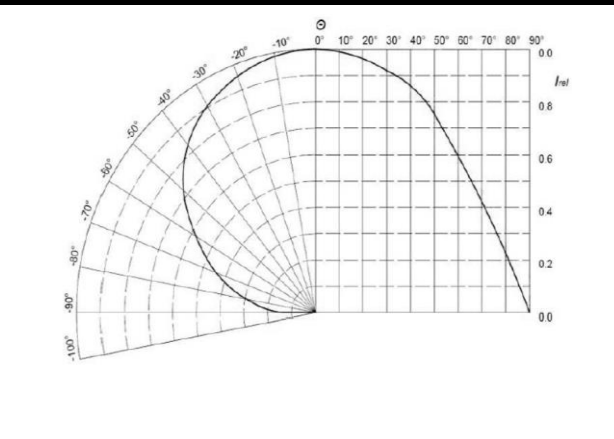
Forward Current v.s. Forward Voltage



Luminous Spectrum

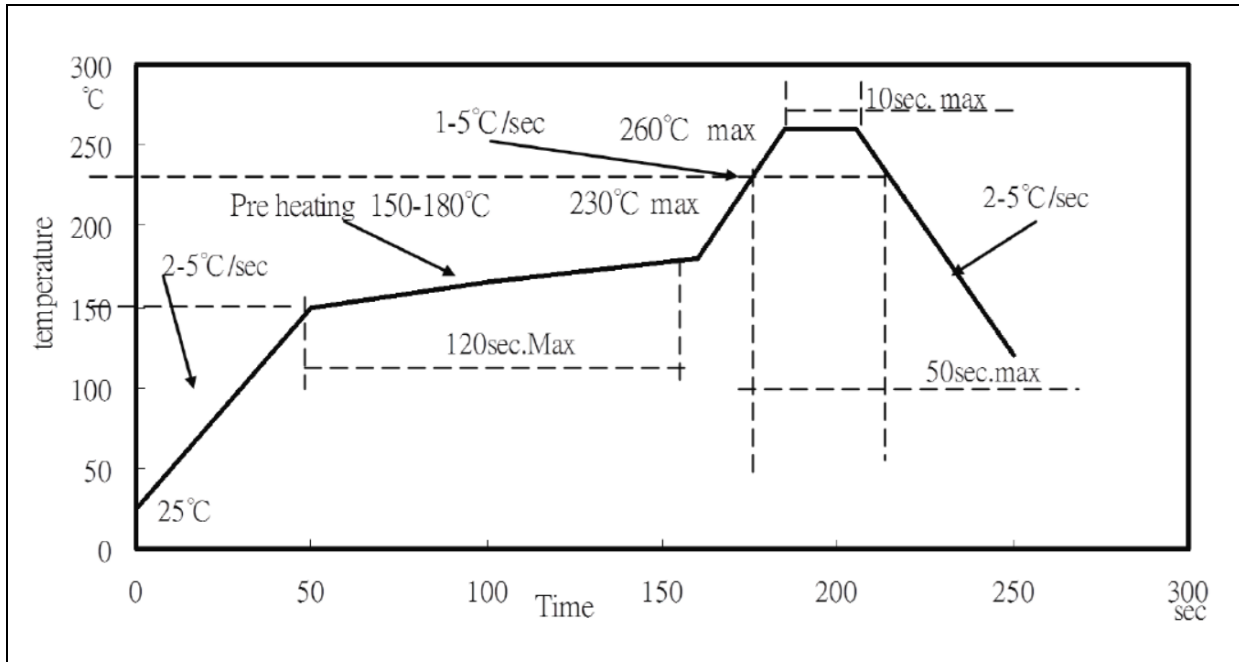


Directive Radiation



RECOMMENDED SOLDERING PROFILE:

Lead-free Solder:

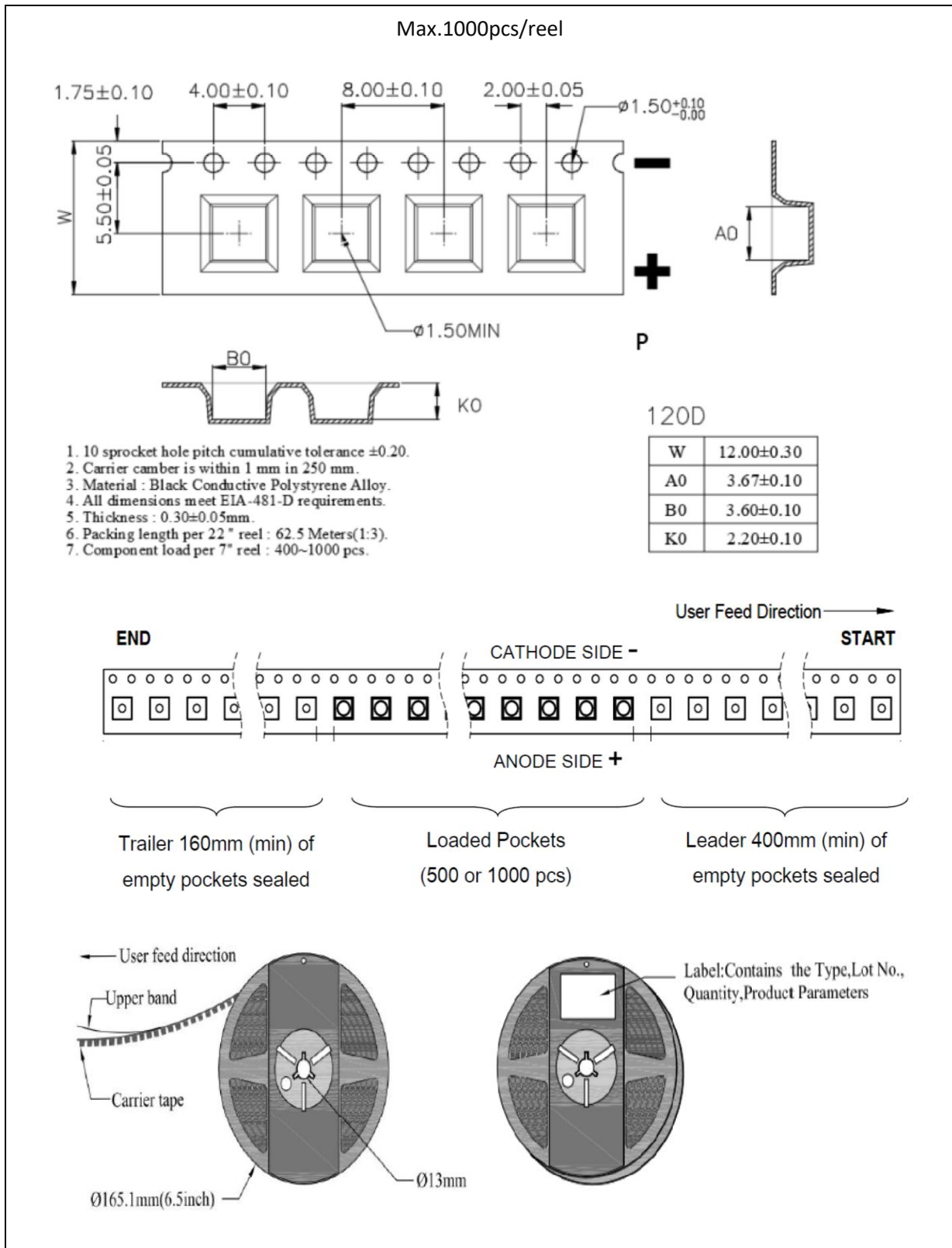


Note:

1. Maximum reflow soldering: 2 times with no more than 24 hours gap in between.
2. Die slug is to be soldered.
3. The recommended reflow temperature is 240°C. The maximum soldering temperature should be limited to 260°C.
4. Before, during, and after soldering, should not apply stress on the components and PCB board.

PACKING SPECIFICATION:

Reel Dimension:



PRECAUTIONS OF USE:

Storage:

It is recommended to store the products in the following conditions:

- Humidity: 60% R.H. Max.
- Temperature: 5°C~30°C (41°F ~86°F).

Shelf life in sealed bag: 12 months at 5°C~30°C and <60% R.H.

Once the package is opened, the products should be used within a week. Otherwise, they should be kept in a damp-proof box with desiccating agent <10% R.H. and apply baking.

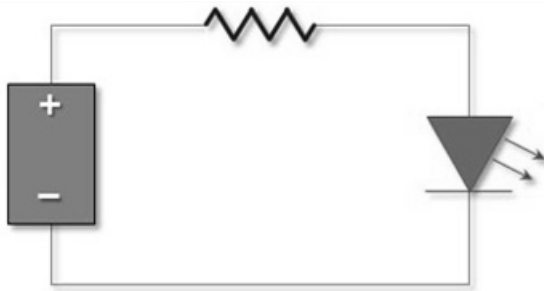
Baking:

It is recommended to bake the LED before soldering if the pack has been unsealed for longer than 24hrs. The suggested baking conditions are as followings:

- 60±3°C x 24hrs and <5%RH, taped / reel package.

It's normal to see slight color fading of carrier (light yellow) after baking in process.

Testing Circuit:



Must apply resistor(s) for protection (over current proof).

Cleaning:

Use alcohol-based cleaning solvents such as isopropyl alcohol to clean the LED carrier / package. Avoid putting any stress force directly on to the LED lens.

ESD (Electrostatic Discharge):

Static Electricity or power surge will damage the LED. Use of a conductive wrist band or anti-electrostatic glove is recommended when handling the LED all time. All devices, equipment, machinery, work tables, and storage racks must be properly grounded.

In the events of manual working in process, make sure the devices are well protected from ESD at any time.

REVISION RECORD:

| Version | Date | Summary of Revision |
|---------|------------|---------------------|
| A1.0 | 09/10/2020 | Datasheet set-up. |

X-ON Electronics

Largest Supplier of Electrical and Electronic Components

Click to view similar products for [High Power LEDs - Single Colour](#) category:

Click to view products by [MGT Brightek](#) manufacturer:

Other Similar products are found below :

[AA2810ASYSK](#) [L1CU-VLT1000000000](#) [GB CS8PM1.13-HYHZ-35-0-350-R18](#) [LR B6SP-T1U2-1-A3D3+DAEA-46-G3R3](#) [GH](#)
[CSSRM4.24-V7V9-1-1-700-R33](#) [PBLA-15LTE](#) [020010030060020](#) [AA2810AVBS/D](#) [KT CSLNM1.13-MXMZ-34-0](#) [ELUC3535NUB-](#)
[P7085Q05075020-S21Q](#) [KB CSLNM1.14-5A8A-23](#) [GY CSHPM1.23-KPKR-36-0-350-R18](#) [LZ4-V4UVH0-0000](#) [KB CULPM1.14-BPBQ-W2](#)
[KB CULPM1.14-AUBQ-W3](#) [XEGAHR-H2-0000-000-000000H8001](#) [OSR53535C1H-700MA](#) [OSR7XNE1E1E](#) [PM6B-3LFE-B](#) [PM6B-3LFS-](#)
[B](#) [N0M53S12](#) [XPEBRY-L1-0000-00S02](#) [XQEAPA-00-0000-000000701](#) [XQEBLU-00-0000-000000Z02](#) [SPHWH2L3D30ED4V0H3](#)
[XQEBLU-00-0000-000000202](#) [L1SP-DRD0002000000](#) [L1SP-LME0002000000](#) [LHUV-0405-A065](#) [LTPL-C034UVH410](#) [XPGDRY-L1-](#)
[0000-00601-SB01](#) [XQEGRN-H0-0000-000000901](#) [XPEEPR-L1-0000-00B01](#) [XPGDRY-L1-0000-00501](#) [XPGDRY-L1-0000-00401](#)
[XQEEPR-00-0000-000000901](#) [XQEEPR-00-0000-000000A01](#) [15335340AA350](#) [XPCRDO-L1-R250-00701](#) [XPEBGR-L1-0000-00D03](#)
[XPEGRN-L1-0000-00F02](#) [LR H9PP-HZJZ-1-1](#) [15335339AA350](#) [XQERDO-02-0000-000000701](#) [XPEBGR-L1-0000-00E02](#) [15335338AA350](#)
[XPEROY-L1-R250-00903](#) [XPEBRY-L1-R250-00R01](#) [XPEEPR-L1-0000-00C01](#) [MLESBL-A1-0000-000U01](#)