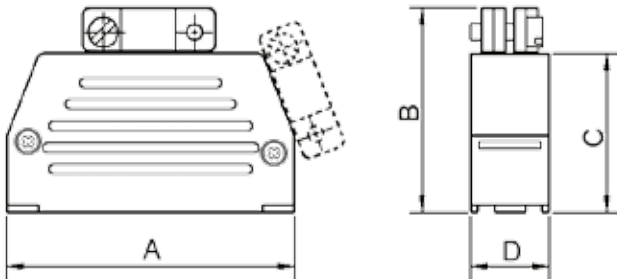


**TECHNICAL SPECIFICATIONS**

**Material:** UL 94 V-0 Plastic Material  
**Operating Temperature:** -55°C to +110°C  
**Cable Entry:** Top + Side Entry  
**Cable O.D:** Up to 9mm  
**Colour:** Black



**Features:**

- Suitable for sizes 9, 15, 25, 37 and 50-way
- Easy to re-open
- Slide-Lock system integrated inside hood with special spring and slide lever
- Hoods are supplied complete with Slide-Lock system
- Slide-Lock and Spring Lever also available as accessories - Please see page 187
- Hood without Slide-Lock delivered on request
- Metalized version available on special request

Size	A	B	C	D
9	32,2	28,6	22,1	15,0
15	39,8	34,1	26,1	15,0
25	54,2	38,3	30,3	15,0
37	70,7	46,2	38,2	15,0
50	68,0	46,2	38,2	18,0

**Ordering information:** Hood with Slide-Locks

Size:	P/N - Kitted:	Product Code:
9-way	2801-0101-01	MHED-DS09S-K
15-way	2801-0101-02	MHED-DS15S-K
25-way	2801-0101-03	MHED-DS25S-K
37-way	2801-0101-04	MHED-DS37S-K
50-way	2801-0101-05	MHED-DS50S-K

## X-ON Electronics

Largest Supplier of Electrical and Electronic Components

*Click to view similar products for [mh connectors manufacturer](#):*

Other Similar products are found below :

[MHDCMR37-ULP](#) [CCOV-37SC-BLACK](#) [C88E310000](#) [DSSKP15L-DB15S-K](#) [MHD45ZK25-DM25P-K](#) [MHHDS26-F-T-B-S](#) [MHCCOV-25SC-BK](#) [MHDTZK15-RA-K](#) [DSSKM15L-DB15S-K](#) [MHDM25-DM25P-K](#) [BNC4MML1MRG58](#) [RJ45SRB-RET-O](#) [MHDPPK25-Y-K](#) [MHDM9-DB9P-K](#) [MHCCOV-9ME](#) [BNCL2.0MRG58](#) [MHDD15-F-T-B-M](#) [MHDTZK25-K](#) [MHRJ126P6CR](#) [RJ45SRB-LGREY](#) [MHED-DS25S](#) [BNCL1.0MRG58](#) [MHDM25-K](#) [RG58SRB-G](#) [MHD45PK37-K](#) [MHDTPPK25-DB25SK](#) [MHDU45ZK09-K](#) [DA9-PMJ8-B-K](#) [MHD45ZK50-K](#) [MHDD25-M-T-B-S](#) [RG58SRB-R](#) [MHDB50SP](#) [MH3101S-8821](#) [RJ45SRB-RED](#) [MHRJ116P4CR](#) [MHTRI-M-9-K](#) [MHDM35-9-K](#) [DSSKM25L-DB25P-K](#) [MHDPPK-M-37-K](#) [MHDTPPK37-K](#) [MHRJJ44NFV](#) [GA0909FFLGK-RC](#) [DA9-SMJ8-R-K](#) [RG58SRB-BE](#) [MHDM25-DB25P-K](#) [MHCCOV-15SN-LG](#) [MHDTZK9-RA-K](#) [MHDVSL25-K](#) [MHCCOV-25SC-LG](#) [DJF-14](#)