



# **KSZ8041NL**

## **10Base-T/100Base-TX Physical Layer Transceiver**

### **Evaluation Board User's Guide**

**Revision 1.1 / May 2007**

© Micrel, Inc. 2007  
All rights reserved

Micrel is a registered trademark of Micrel and its subsidiaries in the United States and certain other countries. All other trademarks are the property of their respective owners.

---

The information furnished by Micrel in this datasheet is believed to be accurate and reliable. However, no responsibility is assumed by Micrel for its use. Micrel reserves the right to change circuitry and specifications at any time without notification to the customer. Micrel Products are not designed or authorized for use as components in life support appliances, devices or systems where malfunction of a product can reasonably be expected to result in personal injury. Life support devices or systems are devices or systems that (a) are intended for surgical implant into the body or (b) support or sustain life, and whose failure to perform can be reasonably expected to result in a significant injury to the user. A Purchaser's use or sale of Micrel Products for use in life support appliances, devices or systems is at Purchaser's own risk and Purchaser agrees to fully indemnify Micrel for any damages resulting from such use or sale.

---

**Micrel, Inc. ♦ 2180 Fortune Drive ♦ San Jose, CA 95131 ♦ U.S.A.**  
**408-944-0800 (voice) ♦ 408-474-1000 (fax)**  
<http://www.Micrel.com>

## **Revision History**

<b>Revision</b>	<b>Date</b>	<b>Summary of Changes</b>
1.0	4/3/07	Initial Release
1.1	5/24/07	Added 100pF capacitor (C53) to BOM.

## Table of Contents

<b>1.0</b>	<b>Introduction .....</b>	<b>5</b>
<b>2.0</b>	<b>Board Features .....</b>	<b>5</b>
<b>3.0</b>	<b>Evaluation Kit Contents.....</b>	<b>5</b>
<b>4.0</b>	<b>Hardware Description .....</b>	<b>6</b>
4.1	MII (Media Independent Interface).....	7
4.1.1	<i>RMII (Reduced Media Independent Interface) Option .....</i>	<i>8</i>
4.2	Jumper Setting & Definition .....	10
4.3	Test Point Definition.....	12
4.4	RJ-45 Connector .....	12
4.5	LED Indicators .....	12
<b>5.0</b>	<b>Bill of Materials.....</b>	<b>13</b>

## **List of Figures**

Figure 1. KSZ8041NL Evaluation Board .....	6
Figure 2. KSZ8041NL-EVAL MII Interface Connection with Spirent SmartBits .....	7
Figure 3. KSZ8041NL-EVAL interfacing with KSZ8893MQL Evaluation Board.....	7

## **List of Tables**

Table 1. Connector J2 - MII Pin Definition.....	8
Table 2. Connector J2 - RMII Pin Definition .....	9
Table 3. KSZ8041NL-EVAL Jumper Definition .....	10
Table 4. Strapping Pin Definitions for KSZ8041NL-EVAL Jumpers.....	11
Table 5. KSZ8041NL-EVAL Test Point Definition .....	12
Table 6. KSZ8041NL-EVAL LED Definition .....	12

## **1.0 Introduction**

The KSZ8041NL is a 10Base-T/100Base-TX Physical Layer Transceiver with MII and RMII MAC interfaces. It utilizes a unique mixed-signal design to extend signaling distance while reducing power consumption, and offers HP Auto MDI/MDI-X for reliable detection of and correction for crossover and straight-through cables, eliminating the need to differentiate between crossover and straight-through cables.

The KSZ8041NL comes in a 32-pin, lead-free MLF<sup>®</sup> (QFN per JDEC) package and provides an ideal solution for 10Base-T/100Base-TX applications that have tight PCB board space.

The KSZ8041NL Eval Board (KSZ8041NL-EVAL) provides a convenient platform to evaluate the KSZ8041NL features. All KSZ8041NL configuration pins are accessible either by jumpers, test points or interface connectors.

## **2.0 Board Features**

- Micrel KSZ8041NL 10Base-T/100Base-TX Physical Layer Transceiver
- RJ-45 Jack for Fast Ethernet cable interface
- HP Auto-MDIX for automatic detection and correction for straight-through and crossover cables
- MII (Media Independent Interface) Connector to interface with a MAC controller
- RMII (Reduced MII) option using MII Connector
- 2 LED Indicators for status and activity
- Jumpers to configure strapping pins
- Manual Reset Button for quick reboot after re-configuration of strapping pins

## **3.0 Evaluation Kit Contents**

The KSZ8041NL Evaluation Kit includes the following hardware:

- KSZ8041NL Evaluation Board

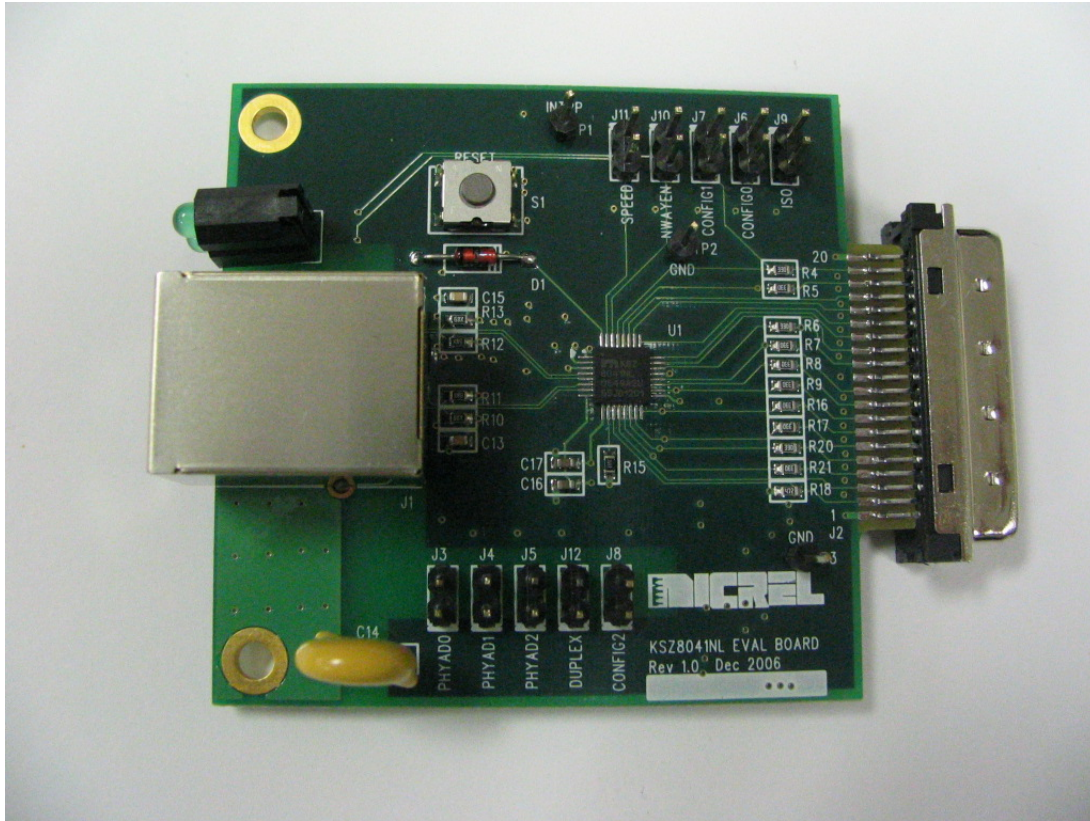
A design package with the following collaterals that can be downloaded from Micrel's website at <http://www.micrel.com>

- KSZ8041NL Eval Board Schematic (PDF and OrCAD DSN file)
- KSZ8041NL\_TL-FTL Eval Boards Gerber Files (PDF version included)
- KSZ8041NL Eval Board User's Guide (this document)
- KSZ8041NL Recommended Land Pattern for PCB Layout
- KSZ8041NL IBIS Model

and the KSZ8041NL Datasheet which is also available from Micrel's website.

## **4.0 Hardware Description**

The KSZ8041NL-EVAL (shown in Figure 1) comes in a compact form factor and plugs directly into industry standard test equipment such as Spirent SmartBits, or other boards with Ethernet MACs that expose the MII interface. Configuration of the KSZ8041NL is accomplished through on-board jumper selections and/or by PHY register access via the MDC/MDIO management pins of the MII Interface.



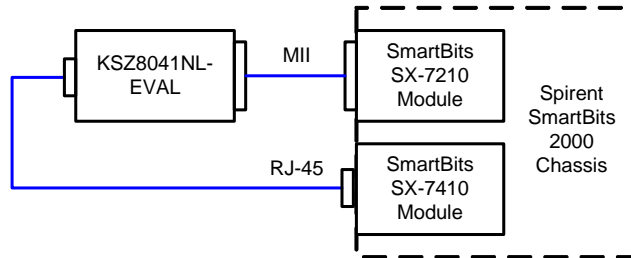
**Figure 1. KSZ8041NL Evaluation Board**

Other features include a RJ-45 Jack for Fast Ethernet cable connection, programmable LED indicators for reporting link status and activity, and a manual reset button for quick reboot after re-configuration of strapping pins.

The KSZ8041NL-EVAL receives +5V DC input power through its MII connector.

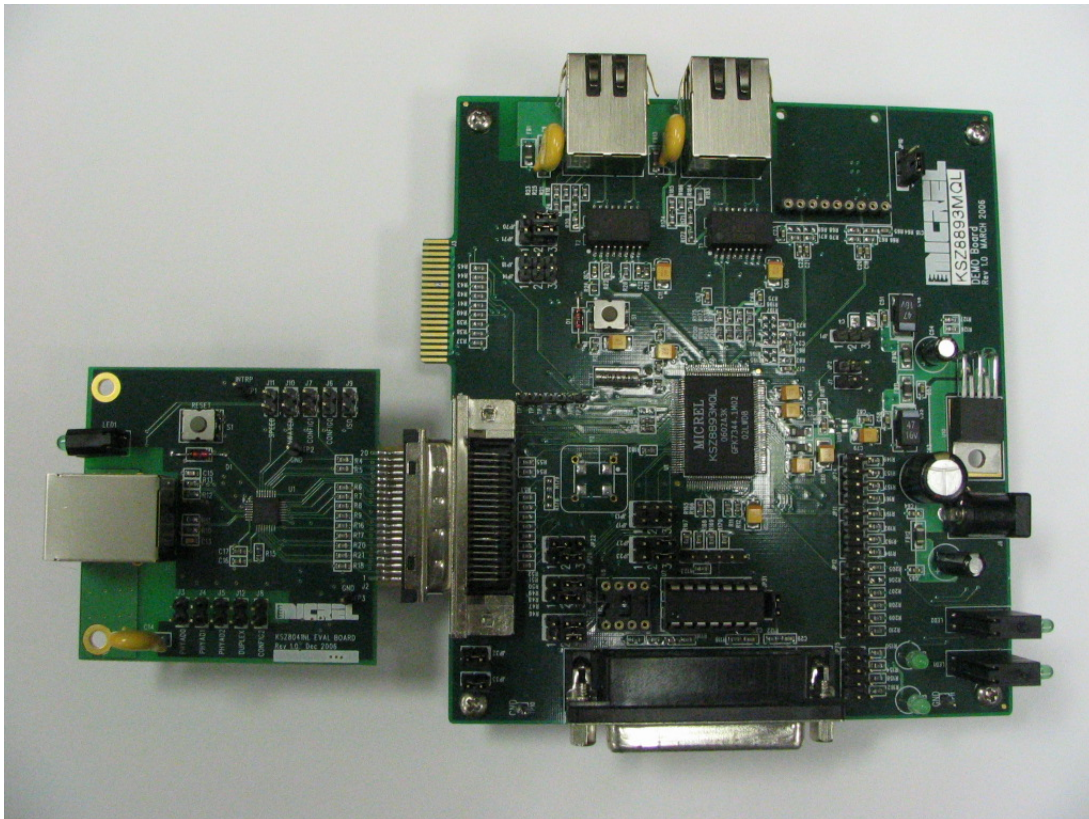
## 4.1 MII (Media Independent Interface)

The KSZ8041NL-EVAL receives power and accesses MII data and management information from the MII connector J2. Figure 2 shows the MII interface connection with Spirent SmartBits.



**Figure 2. KSZ8041NL-EVAL MII Interface Connection with Spirent SmartBits**

Connections with other boards that also expose the MII interface are possible. Figure 3 shows the KSZ8041NL-EVAL connected to the Micrel KSZ8893MQL Evaluation Board.



**Figure 3. KSZ8041NL-EVAL interfacing with KSZ8893MQL Evaluation Board**

The MII interface is defined by Clause 22 of the IEEE 802.3 Specification. MII Management (MIIM) is conducted thru pins MDC (clock line) and MDIO (data line). MIIM allows upper-layer devices to monitor and control the states of the KSZ8041NL. An external device with MDC/MDIO capability can be used to read the PHY status or configure the PHY registers. The MIIM frame format and timing information can be found in the KSZ8041NL Datasheet and in Clause 22 of the IEEE 802.3 Specification.

The KSZ8041NL-EVAL has a 40-pin male edge connector that interfaces with and plugs directly into the SmartBits SX-7210 Module or other Fast Ethernet MAC boards with the mating AMP 787170-4 (40-pin, right angle, female) connector. Table 1 lists the pin outs for the MII interface on connector J2.

Pin #	Signal	Pin #	Signal
1	+5V	21	+5V
2	MDIO	22	Ground
3	MDC	23	Ground
4	RXD3	24	Ground
5	RXD2	25	Ground
6	RXD1	26	Ground
7	RXD0	27	Ground
8	RXDV	28	Ground
9	RXCLK	29	Ground
10	RXER	30	Ground
11	TXER	31	Ground
12	TXCLK	32	Ground
13	TXEN	33	Ground
14	TXD0	34	Ground
15	TXD1	35	Ground
16	TXD2	36	Ground
17	TXD3	37	Ground
18	COL	38	Ground
19	CRS	39	Ground
20	+5V	40	+5V

**Table 1. Connector J2 - MII Pin Definition**

#### **4.1.1 RMII (Reduced Media Independent Interface) Option**

The KSZ8041NL-EVAL can use its 40-pin male edge connector (J2) with some minor board population changes to interface with RMII MACs. Like MII mode, the KSZ8041NL-EVAL receives power and accesses RMII data and management information via connector J2 in RMII mode.

Figure 3 shows the KSZ8041NL-EVAL interfacing with the KSZ8893MQL Evaluation Board in MII mode. Alternatively, both KSZ8041NL and KSZ8893MQL devices can be configured to RMII mode and interface with each other using the same J2 connector interface. For this setup, the



RMII 50MHz reference clock is sourced from the KSZ8893MQL Evaluation Board side. Refer to KSZ8893MQL Eval Board Schematic for additional population changes on the KSZ8893MQL side. For the KSZ8041NL-EVAL side, the board changes to support RMII mode are as follows:

1. Remove crystal circuit (Y1, C16, C17) and TXC clock termination (R6).
2. Populate R14 with 0 Ohm and R19 with 33 Ohm to connect RMII 50MHz reference clock (provided by MAC side via J2 pin 12) to U1 pin 9 (XI input).
3. Select RMII mode by setting strapping pins CONFIG[2:0] to '001'.

These board changes can also be found in the KSZ8041NL Eval Board Schematic.

Table 2 lists the pin outs for the RMII interface on connector J2.

Pin #	Signal	Pin #	Signal
1	+5V	21	+5V
2	MDIO	22	Ground
3	MDC	23	Ground
4	<not used>	24	Ground
5	<not used>	25	Ground
6	RXD[1]	26	Ground
7	RXD[0]	27	Ground
8	CRSDV	28	Ground
9	<not used>	29	Ground
10	RXER	30	Ground
11	<not used>	31	Ground
12	REF_CLK	32	Ground
13	TXEN	33	Ground
14	TXD0	34	Ground
15	TXD1	35	Ground
16	<not used>	36	Ground
17	<not used>	37	Ground
18	<not used>	38	Ground
19	<not used>	39	Ground
20	+5V	40	+5V

**Table 2. Connector J2 - RMII Pin Definition**

## 4.2 Jumper Setting & Definition

The KSZ8041NL-EVAL does not require any jumper for normal operation. At power-up, the KSZ8041NL is configured using the chip's internal pull-up and pull-down resistors with its default strapping pin values. Jumpers are provided to override the default settings, allowing for quick configuration and re-configuration of the board. To override the default settings, simply select and close the desired jumper setting(s) and toggle the on-board manual reset button (S1) for the new setting(s) to take effect.

The KSZ8041NL-EVAL jumper settings are defined in Table 3 below.

Jumper	Definition	Open (default)	Close										
J3	PHYAD0	1	0										
J4	PHYAD1	0	1										
J5	PHYAD2	0	1										
J6	CONFIG0	<table border="1"> <thead> <tr> <th>CONFIG[2:0]</th> <th>Mode</th> </tr> </thead> <tbody> <tr> <td>[open, open, open]</td> <td>MII (default)</td> </tr> <tr> <td>[open, open, close]</td> <td>RMII</td> </tr> <tr> <td>[close, open, open]</td> <td>PCS Loopback</td> </tr> <tr> <td colspan="2">All other CONFIG[2:0] settings not listed are reserved (not used).</td> </tr> </tbody> </table>		CONFIG[2:0]	Mode	[open, open, open]	MII (default)	[open, open, close]	RMII	[close, open, open]	PCS Loopback	All other CONFIG[2:0] settings not listed are reserved (not used).	
CONFIG[2:0]	Mode												
[open, open, open]	MII (default)												
[open, open, close]	RMII												
[close, open, open]	PCS Loopback												
All other CONFIG[2:0] settings not listed are reserved (not used).													
J7	CONFIG1												
J8	CONFIG2												
J9	Isolate Mode	Disable	Enable										
J10	Auto-Negotiation	Enable	Disable										
J11	Forced Speed	100Base-TX	10Base-T										
J12	Forced Duplex	Half	Full										

**Table 3. KSZ8041NL-EVAL Jumper Definition**

Table 4 lists the strapping pin definitions for the KSZ8041NL-EVAL jumpers.

Jumper	Pin	Pin Name	Pin Function								
J5 J4 J3	15 14 13	PHYAD2 PHYAD1 PHYAD0	The PHY Address is latched at power-up / reset and is configurable to any value from 1 to 7. The default PHY Address is 00001. PHY Address bits [4:3] are always set to '00'.								
J8 J7 J6	18 29 28	CONFIG2 CONFIG1 CONFIG0	The CONFIG[2:0] strap-in pins are latched at power-up / reset and are defined as follows: <table border="1" style="margin-left: 20px;"> <thead> <tr> <th>CONFIG[2:0]</th> <th>Mode</th> </tr> </thead> <tbody> <tr> <td>000</td> <td>MII (default)</td> </tr> <tr> <td>001</td> <td>RMII</td> </tr> <tr> <td>100</td> <td>PCS Loopback</td> </tr> </tbody> </table> <p>All other CONFIG[2:0] settings not listed are reserved (not used).</p>	CONFIG[2:0]	Mode	000	MII (default)	001	RMII	100	PCS Loopback
CONFIG[2:0]	Mode										
000	MII (default)										
001	RMII										
100	PCS Loopback										
J9	20	ISO	ISOLATE mode Pull-up = Enable Pull-down (default) = Disable During power-up / reset, this pin value is latched into register 0h bit 10.								
J11	31	SPEED	SPEED mode Pull-up (default) = 100Mbps Pull-down = 10Mbps During power-up / reset, this pin value is latched into register 0h bit 13 as the Speed Select, and also is latched into register 4h (Auto-Negotiation Advertisement) as the Speed capability support.								
J12	16	DUPLEX	DUPLEX mode Pull-up (default) = Half Duplex Pull-down = Full Duplex During power-up / reset, this pin value is latched into register 0h bit 8 as the Duplex Mode.								
J10	30	NWAYEN	Nway Auto-Negotiation Enable Pull-up (default) = Enable Auto-Negotiation Pull-down = Disable Auto-Negotiation During power-up / reset, this pin value is latched into register 0h bit 12.								

**Table 4. Strapping Pin Definitions for KSZ8041NL-EVAL Jumpers**

### 4.3 Test Point Definition

The KSZ8041NL-EVAL has three test points. They are defined in the following table.

Test Point	Definition
TP1	Interrupt Signal (pin 21) with external pull-up
TP2	Signal Ground
TP3	Signal Ground

**Table 5. KSZ8041NL-EVAL Test Point Definition**

### 4.4 RJ-45 Connector

The RJ-45 Connector (J1) is a TDK TLA-6T718 integrated magnetic jack. It connects to standard CAT-5 Ethernet cable to interface with 10Base-T/100Base-TX Ethernet devices.

J1 also supports Auto-MDIX and Auto-Negotiation / Forced Modes.

### 4.5 LED Indicators

A dual LED indicator (LED1) is located adjacent to the RJ-45 Connector. The top LED and bottom LED are connected to LED1 (pin 31) and LED0 (pin 30) of the KSZ8041NL, respectively.

The two LEDs are programmable to LED mode '00' or '01' via register 1Eh bits [15:14], and are defined in the following table.

LED Mode	LED1 (pin 31)	LED0 (pin 30)																					
00	<table border="1"> <thead> <tr> <th>Speed</th> <th>Pin State</th> <th>LED Definition</th> </tr> </thead> <tbody> <tr> <td>10BT</td> <td>H</td> <td>OFF</td> </tr> <tr> <td>100BT</td> <td>L</td> <td>ON</td> </tr> </tbody> </table>	Speed	Pin State	LED Definition	10BT	H	OFF	100BT	L	ON	<table border="1"> <thead> <tr> <th>Link/ Activity</th> <th>Pin State</th> <th>LED Definition</th> </tr> </thead> <tbody> <tr> <td>No Link</td> <td>H</td> <td>OFF</td> </tr> <tr> <td>Link</td> <td>L</td> <td>ON</td> </tr> <tr> <td>Activity</td> <td>Toggle</td> <td>Blinking</td> </tr> </tbody> </table>	Link/ Activity	Pin State	LED Definition	No Link	H	OFF	Link	L	ON	Activity	Toggle	Blinking
	Speed	Pin State	LED Definition																				
	10BT	H	OFF																				
	100BT	L	ON																				
Link/ Activity	Pin State	LED Definition																					
No Link	H	OFF																					
Link	L	ON																					
Activity	Toggle	Blinking																					
01	<table border="1"> <thead> <tr> <th>Activity</th> <th>Pin State</th> <th>LED Definition</th> </tr> </thead> <tbody> <tr> <td>No Activity</td> <td>H</td> <td>OFF</td> </tr> <tr> <td>Activity</td> <td>L</td> <td>ON</td> </tr> </tbody> </table>	Activity	Pin State	LED Definition	No Activity	H	OFF	Activity	L	ON	<table border="1"> <thead> <tr> <th>Link</th> <th>Pin State</th> <th>Definition</th> </tr> </thead> <tbody> <tr> <td>No Link</td> <td>H</td> <td>OFF</td> </tr> <tr> <td>Link</td> <td>L</td> <td>ON</td> </tr> </tbody> </table>	Link	Pin State	Definition	No Link	H	OFF	Link	L	ON			
	Activity	Pin State	LED Definition																				
	No Activity	H	OFF																				
Activity	L	ON																					
Link	Pin State	Definition																					
No Link	H	OFF																					
Link	L	ON																					
10	Reserved – not used	Reserved – not used																					
11	Reserved – not used	Reserved – not used																					

**Table 6. KSZ8041NL-EVAL LED Definition**

## 5.0 Bill of Materials

KSZ8041NL Eval Board  
Revision 1.1

Item	Quantity	Reference	Description	Package
1	2	C1,C2	47uF / Tantalum	C-size
2	1	C3	22uF / Tantalum	B-size
3	8	C4,C5,C7,C10,C11,C12,C13, C15	0.1uF	0603
4	3	C6,C8,C9	10uF / Tantalum	A-size
5	1	C14	1000pF / 2kV	radial lead
6	2	C16,C17	22pF	0603
7	1	C53	100pF	0603
8	1	D1	1N4148	DO-35 / axial lead
9	1	FB1	Ferrite Bead	1206
10	1	J1	RJ-45 Mag Jack	thru hole / PC mount
11	1	J2	Male MII Connector	
12	10	J3,J4,J5,J6,J7,J8,J9,J10, J11,J12	Header 2X1	thru hole / 0.1" pitch
13	1	LED1	LEDx2 / Green	thru hole / 0.1" pitch
14	1	R1	100K	0603
15	1	R2	10K	0603
16	8	R3,R18,R25,R26,R27,R28, R29,R30	4.7K	0603
17	10	R4,R5,R6,R7,R8,R9,R16, R17,R20,R21	33	0603
18	4	R10,R11,R12,R13	49.9	0603
19	2	R14,R19	NC	0603
20	1	R15	6.49K	0603
21	2	R22,R24	220	0603
22	4	R23,R31,R32,R33	1K	0603
23	1	S1	SW PUSHBUTTON	SMT
24	3	TP1,TP2,TP3	TestPoint	thru hole / 0.1" pitch
25	1	U1	KSZ8041NL	32-pin MLF
26	1	U2	MIC5216-3.3BM5	SOT-23-5
27	1	Y1	25MHz +/-50ppm	cylinder

## X-ON Electronics

Largest Supplier of Electrical and Electronic Components

*Click to view similar products for [Ethernet Development Tools](#) category:*

*Click to view products by [Micrel](#) manufacturer:*

Other Similar products are found below :

[KSZ8863FLL-EVAL](#) [KSZ8873MLL-EVAL](#) [PD-IM-7648M](#) [PD-IM-7648T4](#) [PD70101EVB15F-12](#) [PD70101EVB6F](#) [PD70211EVB50FW-5](#)  
[PD70211EVB72FW-12](#) [EV44F42A](#) [WIZ550S2E-232-EVB](#) [DFR0272](#) [A000024](#) [DFR0125](#) [UKIT-006GP](#) [UKIT-003FE](#) [UKIT-002GB](#) [UKIT-](#)  
[001FE](#) [EVB-KSZ9477](#) [OM-E-ETH](#) [DP83867ERGZ-R-EVM](#) [UP-POE-A20-0001](#) [2971](#) [3785](#) [ASX00006](#) [ASX00021](#) [ASX00026](#) [XTIB-E](#)  
[ESP32-ETHERNET-KIT-VE](#) [EVB-KSZ9897-1](#) [KSZ9031MNX-EVAL](#) [AC164121](#) [AC164132](#) [AC320004-5](#) [AC320004-6](#) [AC320004-7](#)  
[DM320114](#) [DM990004](#) [EV02N47A](#) [EV44C93A](#) [EV57N07A](#) [EVB-KSZ8563](#) [EVB-KSZ9477-1](#) [EVB-KSZ9893](#) [EVB-LAN7430](#) [EVB-](#)  
[LAN7431-EDS](#) [EVB-LAN7800LC-1](#) [EVB-LAN7850](#) [EVB-LAN9252-3PORT](#) [EVB-LAN9252-ADD-ON](#) [EVB-LAN9252-DIGIO](#)