

## MODULE ADAPTER BOARDS

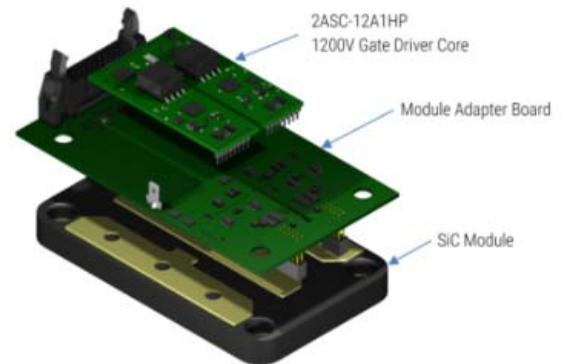


### WHAT ARE MODULE ADAPTER BOARDS?

- Each Module Adapter Board is compatible with a [2ASC Series Gate Driver Core](#)
- Each Module Adapter Board is compatible with a specific type of SiC Device
- Designed for Evaluation Purposes only

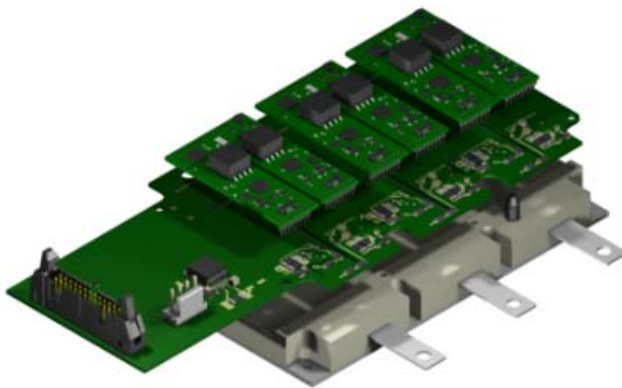
### AVAILABILITY

- Standard Designs available in distribution
- Design Files (Schematic, Layout, BOM) available for Design-Your-Own Boards
- Custom Designs - Contact AgileSwitch (NRE)



## ASEP - AUTOMOTIVE SiC EVALUATION PLATFORM

Part Number: ASEP-00001  
Status: **New**



### FEATURES

- Connects 3 Cores for Full Inverter Evaluation
- LEDs to indicate Power, Faults
- Wide 18V-48V Power Supply Range
- Isolated DC Link & Temperature PWM Output, Fault Reporting

### 2ASC COMPATIBILITY

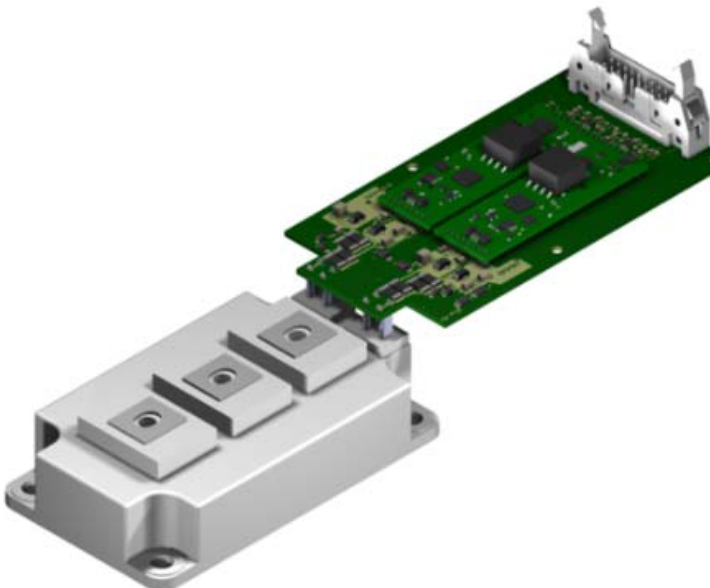
- 2ASC-12A1HP

### MODULE COMPATIBILITY

- Automotive Six-Pack Modules

## 62CA1 - 1200V 62MM ADAPTER

Part Number: 62CA1  
Status: **New**



### FEATURES

- Half Bridge Design
- 5V/15V Single Ended or 5V Differential

### CORE COMPATIBILITY

- [2ASC-12A1HP](#)

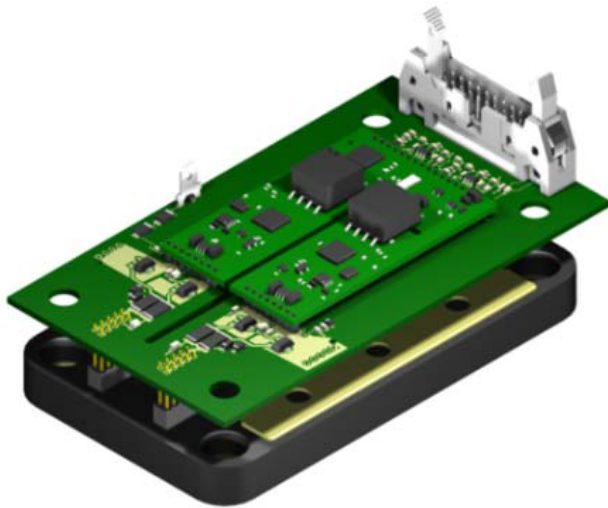
### MODULE COMPATIBILITY

- 2ASTANDARD 1200V HALF-BRIDGE 62MM SiC DEVICES

## 62CA2 - 1200V HIGH PERFORMANCE 62MM ADAPTER

Part Number: 62CA2

Status: **New**



### FEATURES

- Half-Bridge Design
- Top Mount
- 5V/15V Single Ended or 5V Differential

### 2ASC COMPATIBILITY

- [2ASC-12A1HP](#)

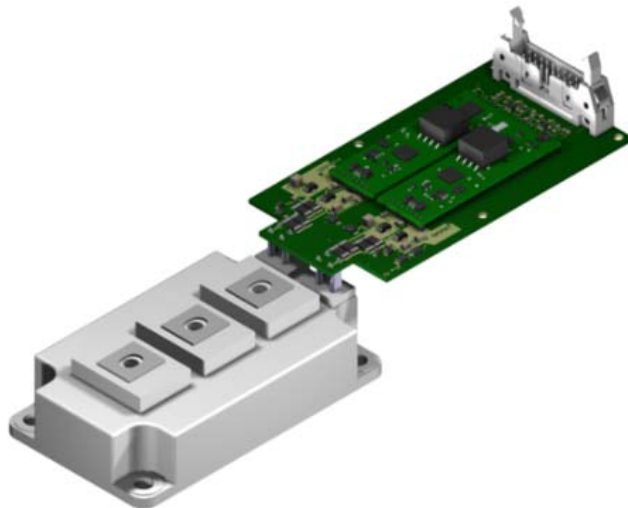
### MODULE COMPATIBILITY

- CAS325M12HM2

## 62CA4 - 1700V 62MM ADAPTER

Part Number: 62CA4

Status: **New**



### FEATURES

- Half-Bridge Design
- Side-car Mounted
- 5V/15V Single Ended or 5V Differential

### 2ASC COMPATIBILITY

- 2ASC-17A1HP

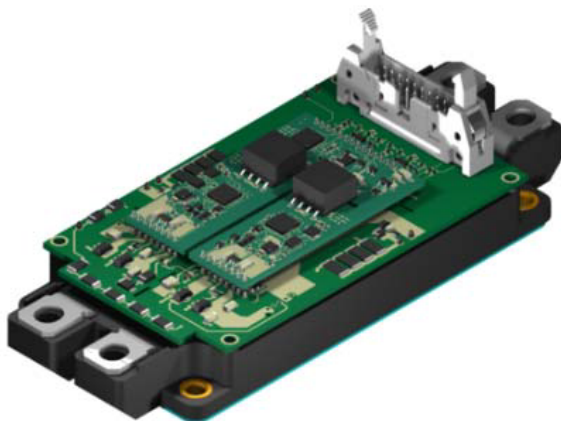
### MODULE COMPATIBILITY

- STANDARD 1700V HALF-BRIDGE 62MM SiC DEVICES

## EDCA1 - 1200V ROHM E/G TYPE ADAPTER

Part Number: EDCA1

Status: **In Development**



### FEATURES

- Half-Bridge Design
- Direct Mount
- 5V/15V Single Ended or 5V Differential

### 2ASC COMPATIBILITY

- 2ASC-12A1HP

### MODULE COMPATIBILITY

- 1200V ROHM E/G Type SiC Modules

## X-ON Electronics

Largest Supplier of Electrical and Electronic Components

*Click to view similar products for [Modules Accessories](#) category:*

*Click to view products by [Microchip](#) manufacturer:*

Other Similar products are found below :

[7010-0001](#) [AX98219](#) [A1UL8RISER](#) [F1UJPMICRISER](#) [FHW1U16RISER](#) [20-101-0440](#) [2828736-1](#) [MBCDROM](#) [AX61221TM](#) [VM-105](#)  
[EA CARREDIPTFT02](#) [AMO-R022E](#) [RK-210E-B](#) [E226171106](#) [88606200030E](#) [8816K6400A0E](#) [MIC-75M13-00A1E](#) [FPM-1000T-SMKE](#)  
[AMK-R004E](#) [96FMCF-ST2ADAPTER1](#) [AHWKPTP12GBGB](#) [AXXSTCPUCAR](#) [FPK-07-R10](#) [Mini Din 6P to 6P HARNESS](#) [FPF1320](#)  
[POWER MULTIPLEXER CARRIER](#) [881261510A0E](#) [AXXP3SWX08080](#) [conga-B7XD/CSP-Cu-B](#) [881281021A0E](#) [HFT for mounting KIT](#)  
[FN928X\\_FN929X](#) [BB-MH112-1A](#) [15100600](#) [9-5000-1116](#) [70763](#) [98R3612003E](#) [881261910A0E](#) [CORAL 5MP CAMERA](#) [106897](#) [48222R](#)  
[BREAK OUT BOARD 20](#) [20926110901](#) [PYCASE GREEN](#) [PYCASE BLUE](#) [FP15072\\_ZORYA-SC-HEKLA](#) [20952000004](#) [20953000007](#)  
[DP-DVI-R10](#) [575-BBIS](#) [RACK-220GW/A130B](#) [492-BBKM](#)