



Atmel QT600 Quick Start Guide

Touch Solutions





Introduction

Looking to take your design to the next level? You have made the right choice in purchasing the Atmel® QT600 Development Kit. It allows you to demo Atmel button, slider and wheel technology and add additional modules/boards. The kit also enables you to validate your own design/board while leveraging the best touch and microcontroller solutions available.



Download the latest software

To get started, visit <http://www.atmel.com/qtouchsuite> and download four pieces of software:

- Atmel QTouch Studio® (version 4.3 or later) - Visual Studio + .NET (version 3.5 or later)
- Atmel AVR® Studio (version 4.18 or later) AND ALL Service Packs (SPx)
- Atmel QTouch® Library (version 4.3 or later)
- GNU Compiler – Download at <http://sourceforge.net/projects/winavr/files>

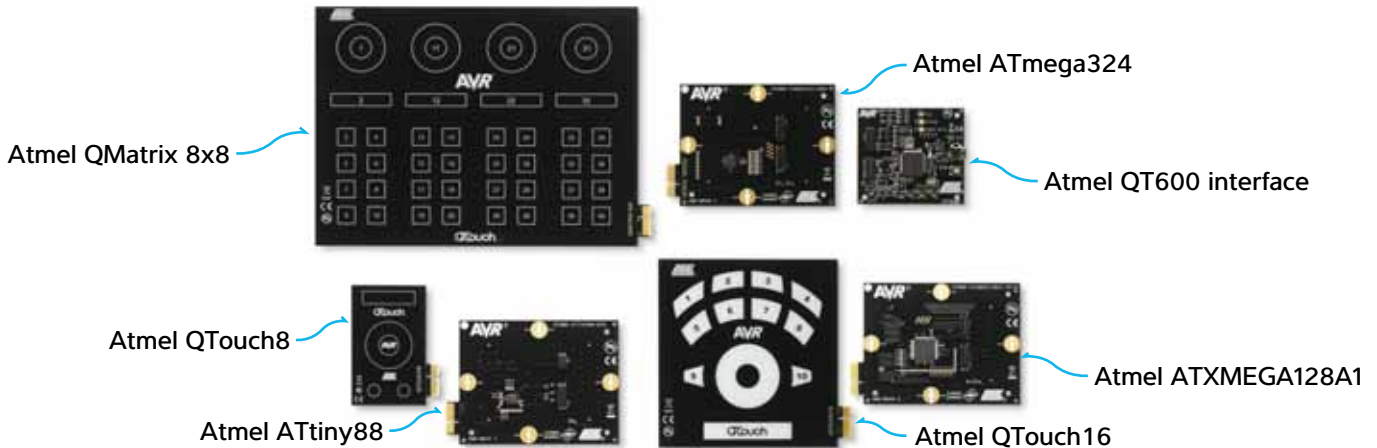
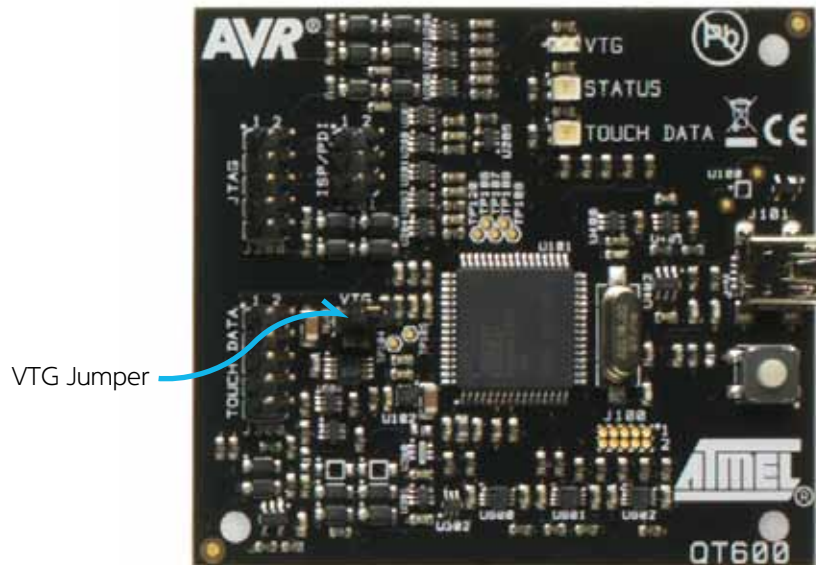


Figure 1 – The Atmel QT600 Evaluation Kit includes these microcontroller and sensor boards

The photo above shows three sets of boards (sensor board and corresponding microcontroller board):

- QTouch8 with the ATtiny88
- QTouch16 with either the ATXMEGA128A1 or the ATmega324
- QMatrix 8x8 with either the ATXMEGA128A1 or the ATmega324

*UC3L MCU board in 2011



Affix the rubber stoppers to QTouch8 (4), QTouch16 (4), QMatrix 8x8 (6), and the QT600 main controller board (4) leaving two spares.

Figure 2 – Close-up of the Atmel QT600 interface board and location of the VTG

Note: On the main QT600 control board, make sure the jumper is in place on the VTG. The board should be configured as above:

Connect the kit modules

- 1 QTouch8 with ATtiny88
Choose the QTouch8 and the ATtiny88:
 - 1.1 Open the Atmel AVR Studio®
 - 1.2 Select Open in Project Wizard window
 - 1.3 Select `C:\Program Files\Atmel\Atmel_QTouch_Libraries_4.3\Generic_QTouch_Libraries\AVR_Tiny_Mega_XMega\QTouch\example_projects\QT600_ATtiny88_gnu_qt8`
 - 1.4 Connect the 6-conductor ribbon cable from the ISP header on the ATtiny88 board to the ISP/PDI header on the QT600 Interface board
 - 1.5 Connect the flex cable from the QTouch8 board to the ATtiny88 board
 - 1.6 Connect the USB cable between your PC and the QT600 Interface board (Three LEDs should light up—then hold the button down for five seconds until the 'Touch Data' LED turns off)
 - 1.7 In AVR Studio, click the 'Con' button on the top toolbar
 - 1.8 Select QT600 as the Platform and USB as the Port, and then click **connect**



Program and run the demo



1.9 Select Main tab

- 1.9.1 Device and Signature Bytes = ATtiny88
- 1.9.2 Programming Mode and Target Settings = ISP Mode
 - 1.9.2.1 Settings ISP Freq = 200.0kHz (click Write)

1.10 Select HW Settings tab

- 1.10.1 VTarget = Target Voltage: 3.3V (click Write)

1.11 Select Program tab

- 1.11.1 Flash
 - 1.11.1.1 Input HEX File = C:\Program Files\Atmel\Atmel_QTouch_Libraries_4.3\Generic_QTouch_Libraries\AVR_Tiny_Mega_XMega\QTouch\example_projects\QT600_ATtiny88_gnu.hex
 - 1.11.1.2 Click Program (STATUS LED on Interface Board turns red during programming then back to green when programming is complete)

1.12 Disconnect the USB cable from PC

1.13 Remove the 6-conductor ribbon cable

1.14 Connect the 10-conductor ribbon cable between the TOUCH DATA headers on the ATtiny88 and interface boards

1.15 Reconnect the USB cable to PC

1.16 In Atmel® AVR Studio®, click on the 'QT' icon in the toolbar to launch Atmel QTouch Studio®

1.17 In QTouch Studio

- 1.17.1 Make sure that the Application Mode on the left side is set to **Analysis Mode**
- 1.17.2 Just below (under Touch Data Read Control), click **Start Reading**
- 1.17.3 QTouch Studio is now reading touch data from your QT600. You will see changes in the Virtual Kit View as you touch the sensor regions on the QTouch8 board.



Figure 3 – Atmel QTouch8 Sensor Board Displayed on CPU Monitor

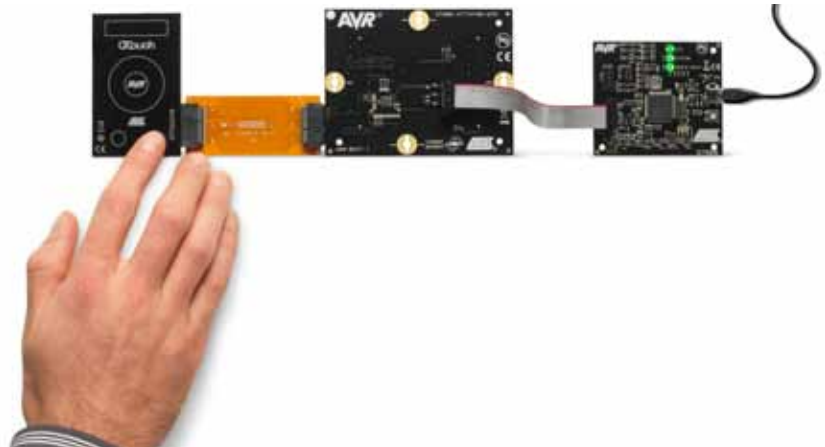


Figure 4 – Complete Set-up for the Atmel QTouch8 sensor board: The sensor board is connected to the ATtiny88, which in turn is connected to the interface board

Connect Kit Modules

2 QTouch16 with ATmega324 and QMatrix 8x8 with ATXMEGA128A1

2.1 By using the table below and following the same procedures as in step number 1 above, you can program and run both of these boards

Sensor Board / MCU Board	1.2) To Program	1.6.1) Main Lab - Device and Signature Bytes	1.6.1) Main Tab - Programming Mode and Target Settings	1.7) HW Setting tab	1.11) To Program and Run	1.8) Program Tab --> Flash Hex Files c:\Programs Files\Atmel_QTouch_Libraries_4.3\Generic_QTouch_Libraries\AVR_Tiny_Mega_XMega\
QTouch8 / ATtiny88	6-conductor ribbon cable into ISP pins	ATtiny88	ISP Mode (Settings = ISP Frequency = 200kHz)	VTarget = Target Voltage: 3.3V (click Write)	10-conductor ribbon cable into TOUCH DATA	QTouch\example_projects\QT600_ATtiny88_gnu.hex
ATouch16 / ATXMEGA128A1	10-conductor ribbon cable into JTAG pins	ATxmega128A1	JTAG Mode (Settings = 'Target device is not part of a JTAG daisy chain')	VTarget = Target Voltage: 3.3V (click Write)	10-conductor ribbon cable into TOUCH DATA	QTouch\example_projects\QT600_ATxmega128a1_qt16_gnu.hex
QMatrix 8x8 / ATmega324	10-conductor ribbon cable into JTAG pins	ATmega324PA	JTAG Mode (Settings = 'Target device is not part of a JTAG daisy chain')	VTarget = Target Voltage: 3.3V (click Write)	10-conductor ribbon cable into TOUCH DATA	QMatrix\example_projects\QT600_ATmega324_qm64_gnu.hex

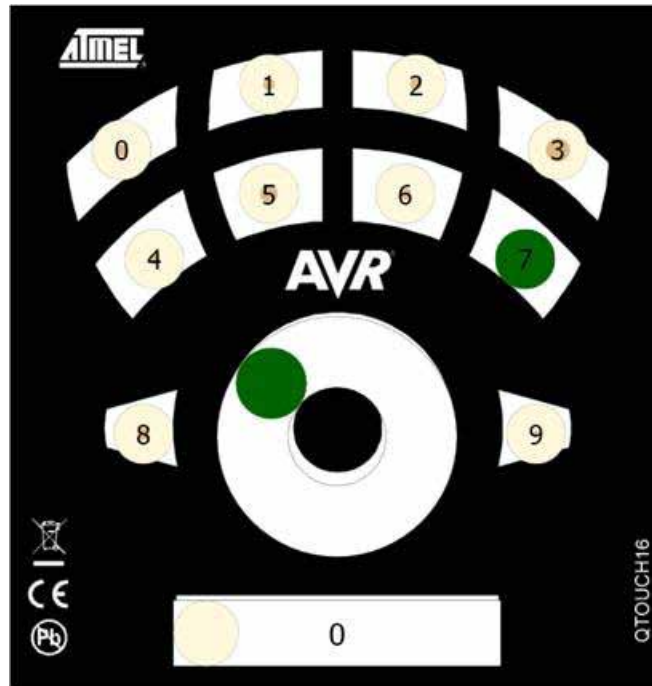


Figure 5 – Atmel® QTouch16 sensor board displayed on CPU monitor

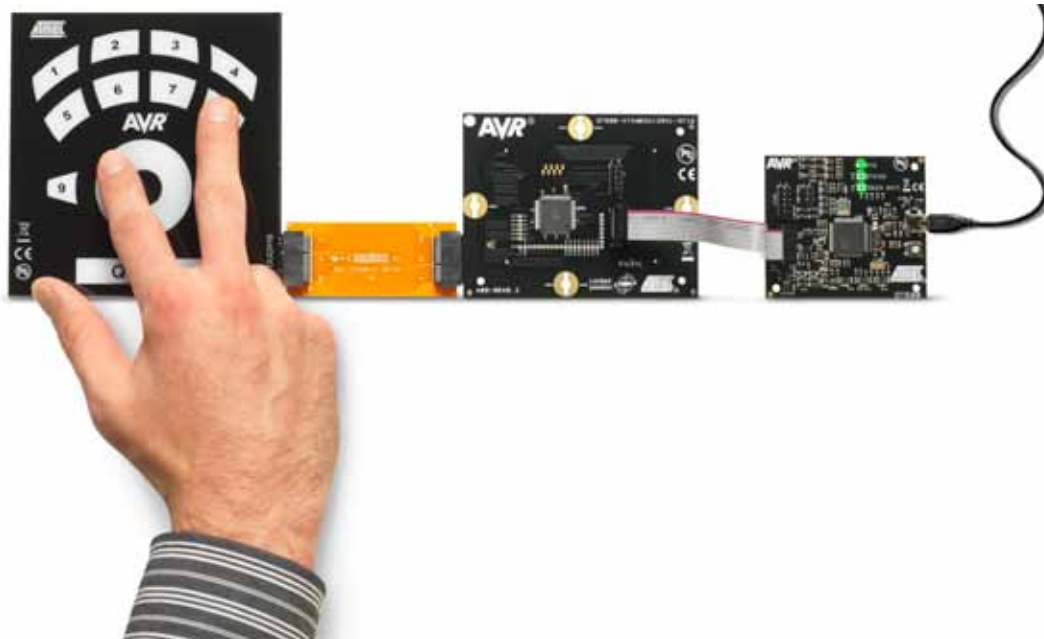


Figure 6 – Complete set-up for the Atmel QTouch16 sensor board: The sensor board is connected to the Atmel ATXMEGA128A1, which in turn is connected to the interface board

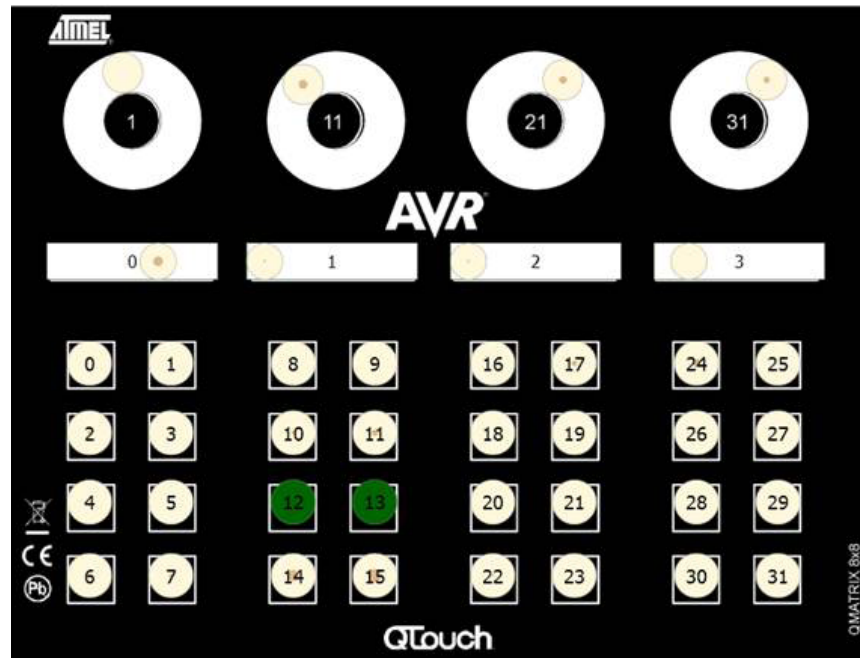


Figure 7 – Atmel QMatrix 8x8 sensor board displayed on CPU monitor

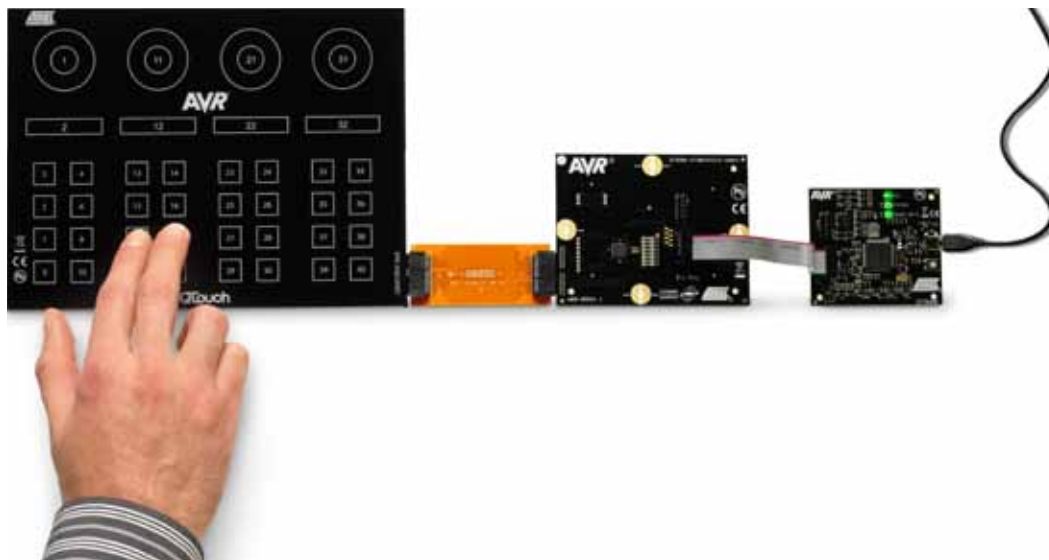


Figure 8 – Complete set-up for the Atmel® QMatrix 8x8 sensor board: The sensor board is connected to the Atmel ATmega324, which in turn is connected to the interface board

References

Atmel QTouch® Library User Guide - http://www.atmel.com/lib/pdf/Atmel_TLib3-1_CreateProjectV14_IAR+GCC.pdf

Atmel Touch Sensors Design Guide - http://www.atmel.com/dyn/resources/prod_documents/doc10620.pdf

Application Notes - http://www.atmel.com/dyn/products/app_notes.asp?family_id=697

Atmel® QT600 Application Note – Coming soon

**Atmel Corporation**

2325 Orchard Parkway
San Jose, CA 95131
USA

Tel: (+1)(408) 441-0311

Fax: (+1)(408) 487-2600

www.atmel.com

Atmel Asia Limited

Unit 01-5 & 16, 19F
BEA Tower, Millennium City 5
418 Kwun Tong Road
Kwun Tong, Kowloon
HONG KONG

Tel: (+852) 2245-6100

Fax: (+852) 2722-1369

Atmel Munich GmbH

Business Campus
Parkring 4
D-85748 Garching b. Munich
GERMANY

Tel: (+49) 89-31970-0

Fax: (+49) 89-3194621

Atmel Japan

9F, Tonetsu Shinkawa Bldg.
1-24-8 Shinkawa
Chuo-ku, Tokyo 104-0033
JAPAN

Tel: (+81)(3) 3523-3551

Fax: (+81)(3) 3523-7581

© 2011 Atmel Corporation. All rights reserved. / Rev.: QT600QSG

Atmel®, logo and combinations thereof, TINYAVR®, AVR®, AVR UC3®, AVR STUDIO®, QTOUCH®, QTOUCH STUDIO®, PICOPOWER® and others are registered trademarks or trademarks of Atmel Corporation or its subsidiaries. Other terms and product names may be trademarks of others.

Disclaimer: The information in this document is provided in connection with Atmel products. No license, express or implied, by estoppel or otherwise, to any intellectual property right is granted by this document or in connection with the sale of Atmel products. EXCEPT AS SET FORTH IN THE ATMEL TERMS AND CONDITIONS OF SALES LOCATED ON THE ATMEL WEBSITE, ATMEL ASSUMES NO LIABILITY WHATSOEVER AND DISCLAIMS ANY EXPRESS, IMPLIED OR STATUTORY WARRANTY RELATING TO ITS PRODUCTS INCLUDING, BUT NOT LIMITED TO, THE IMPLIED WARRANTY OF MERCHANTABILITY, FITNESS FOR A PARTICULAR PURPOSE, OR NON-INFRINGEMENT. IN NO EVENT SHALL ATMEL BE LIABLE FOR ANY DIRECT, INDIRECT, CONSEQUENTIAL, PUNITIVE, SPECIAL OR INCIDENTAL DAMAGES (INCLUDING, WITHOUT LIMITATION, DAMAGES FOR LOSS AND PROFITS, BUSINESS INTERRUPTION, OR LOSS OF INFORMATION) ARISING OUT OF THE USE OR INABILITY TO USE THIS DOCUMENT, EVEN IF ATMEL HAS BEEN ADVISED OF THE POSSIBILITY OF SUCH DAMAGES. Atmel makes no representations or warranties with respect to the accuracy or completeness of the contents of this document and reserves the right to make changes to specifications and products descriptions at any time without notice. Atmel does not make any commitment to update the information contained herein. Unless specifically provided otherwise, Atmel products are not suitable for, and shall not be used in, automotive applications. Atmel products are not intended, authorized, or warranted for use as components in applications intended to support or sustain life.

X-ON Electronics

Largest Supplier of Electrical and Electronic Components

Click to view similar products for [Touch Sensor Development Tools](#) category:

Click to view products by [Microchip](#) manufacturer:

Other Similar products are found below :

[ATMXT1066T2-DEV-PCB](#) [ATMXT336UDEVPCB](#) [ATMXT641TDAT-I2C-PCB](#) [1374](#) [MIKROE-1906](#) [1602](#) [SEN0164](#) [1982](#) [STEVAL-PCC009V3](#) [ATSAMD20-QTRDEMO](#) [ATQT2-XPRO](#) [ATQT6-XPRO](#) [2340](#) [DM160221](#) [DM160229](#) [DM160222](#) [ATQT5-XPRO](#) [DFR0129](#) [SEN0170](#) [SLEXP8019A](#) [SLEXP8018A](#) [1375](#) [DFR0386](#) [SEN0186](#) [SEN0148](#) [DK-000013-03](#) [ROB0103](#) [cs-useful-01](#) [DFR0385](#) [SEN0184](#) [SX8651EVKA](#) [1362](#) [1580](#) [2024](#) [3575](#) [4830](#) [AS8579-TS_EK_DB](#) [ATQT600](#) [IQS227/228ASEV01](#) [SKU-6515](#) [CY3280-MBR2](#) [CY3280-MBR3](#) [DFR0030](#) [DM160219](#) [AC160219](#) [AC320007](#) [ATEVK-MXT1066T2-A](#) [ATEVK-MXT1189TAT-C](#) [ATEVK-MXT1189TDAT-A](#) [ATEVK-MXT1665TAT-C](#)