

---

**Appendix A - ATtiny87/ATtiny167 Automotive  
Specification at 150°C**

---

**DATASHEET****Description**

---

This document contains information specific to devices operating at temperatures up to 150°C. Only deviations are covered in this appendix, all other information can be found in the complete Automotive datasheet. The complete Automotive datasheet can be found on <http://www.atmel.com>

# 1. Electrical Characteristics

## 1.1 Absolute Maximum Ratings

Stresses beyond those listed under “Absolute Maximum Ratings” may cause permanent damage to the device. This is a stress rating only and functional operation of the device at these or any other conditions beyond those indicated in the operational sections of this specification is not implied. Exposure to absolute maximum rating conditions for extended periods may affect device reliability.

Parameters	Test Conditions	Unit
Operating temperature	–55 to +150	°C
Storage temperature	–65 to +175	°C
Voltage on any pin except $\overline{\text{RESET}}$ with respect to ground	–0.5 to $V_{\text{CC}} + 0.5$	V
Voltage on $\overline{\text{RESET}}$ with respect to ground	–0.5 to +13.0	V
Maximum operating voltage	6.0	V
DC current per I/O pin	30	mA
DC current $V_{\text{CC}}$ and GND	200.0	

## 1.2 DC Characteristics

$T_A = -40^\circ\text{C}$  to  $+150^\circ\text{C}$ ,  $V_{\text{CC}} = 4.5\text{V}$  to  $5.5\text{V}$  (unless otherwise noted)

Parameters	Test Conditions	Symbol	Min.	Typ.	Max.	Unit
Input low voltage, except XTAL1 and $\overline{\text{RESET}}$ pin	$V_{\text{CC}} = 4.5\text{V} - 5.5\text{V}$	$V_{\text{IL}}$	–0.5		$+0.2V_{\text{CC}}^{(1)}$	V
Input high voltage, except XTAL1 and $\overline{\text{RESET}}$ pins	$V_{\text{CC}} = 4.5\text{V} - 5.5\text{V}$	$V_{\text{IH}}$	$0.6V_{\text{CC}}^{(2)}$		$V_{\text{CC}} + 0.5$	V
Input low voltage, XTAL1 pin	$V_{\text{CC}} = 4.5\text{V} - 5.5\text{V}$	$V_{\text{IL1}}$	–0.5		$+0.1V_{\text{CC}}^{(1)}$	V
Input high voltage, XTAL1 pin	$V_{\text{CC}} = 4.5\text{V} - 5.5\text{V}$	$V_{\text{IH1}}$	$0.7V_{\text{CC}}^{(2)}$		$V_{\text{CC}} + 0.5$	V
Input low voltage, $\overline{\text{RESET}}$ pin	$V_{\text{CC}} = 4.5\text{V} - 5.5\text{V}$	$V_{\text{IL2}}$	–0.5		$0.2V_{\text{CC}}^{(1)}$	V
Input high voltage, $\overline{\text{RESET}}$ pin	$V_{\text{CC}} = 4.5\text{V} - 5.5\text{V}$	$V_{\text{IH2}}$	$0.9V_{\text{CC}}^{(2)}$		$V_{\text{CC}} + 0.5$	V
Input low voltage, $\overline{\text{RESET}}$ pin as I/O	$V_{\text{CC}} = 4.5\text{V} - 5.5\text{V}$	$V_{\text{IL3}}$	–0.5		$0.2V_{\text{CC}}^{(1)}$	V
Input high voltage, $\overline{\text{RESET}}$ pin as I/O	$V_{\text{CC}} = 4.5\text{V} - 5.5\text{V}$	$V_{\text{IH3}}$	$0.8V_{\text{CC}}^{(2)}$		$V_{\text{CC}} + 0.5$	V
Output low voltage <sup>(3)</sup> , I/O pin except $\overline{\text{RESET}}$	$I_{\text{OL}} = 10\text{mA}$ , $V_{\text{CC}} = 5\text{V}$	$V_{\text{OL}}$			0.8	V

- Notes:
- “Max” means the highest value where the pin is guaranteed to be read as low
  - “Min” means the lowest value where the pin is guaranteed to be read as high
  - Although each I/O port can sink more than the test conditions (20mA at  $V_{\text{CC}} = 5\text{V}$ ) under steady state conditions (non-transient), the following must be observed:
    - The sum of all  $I_{\text{OL}}$ , for all ports, should not exceed 400mA.
    - The sum of all  $I_{\text{OL}}$ , for ports C0 - C5, should not exceed 200mA.
    - The sum of all  $I_{\text{OL}}$ , for ports C6, D0 - D4, should not exceed 300mA.
    - The sum of all  $I_{\text{OL}}$ , for ports B0 - B7, D5 - D7, should not exceed 300mA.
 If  $I_{\text{OL}}$  exceeds the test condition,  $V_{\text{OL}}$  may exceed the related specification. Pins are not guaranteed to sink current greater than the listed test condition.
  - For temperature range  $+125^\circ\text{C}$  to  $+150^\circ\text{C}$  only. For  $-40^\circ\text{C}$  to  $+125^\circ\text{C}$ , refer to ATtiny167 automotive datasheet.

## 1.2 DC Characteristics (Continued)

$T_A = -40^{\circ}\text{C}$  to  $+150^{\circ}\text{C}$ ,  $V_{CC} = 4.5\text{V}$  to  $5.5\text{V}$  (unless otherwise noted) (Continued)

Parameters	Test Conditions	Symbol	Min.	Typ.	Max.	Unit
Output high voltage <sup>(4)</sup> , I/O pin except RESET	$I_{OH} = -10\text{mA}$ , $V_{CC} = 5\text{V}$	$V_{OH}$	4.0			V
Input leakage current I/O pin	$V_{CC} = 5.5\text{V}$ , pin low (absolute value)	$I_{IL}$			1	$\mu\text{A}$
Input leakage current I/O Pin	$V_{CC} = 5.5\text{V}$ , pin high (absolute value)	$I_{IH}$			1	$\mu\text{A}$
Reset pull-up resistor		$R_{RST}$	35		65	$\text{k}\Omega$
I/O pin pull-up resistor		$R_{PU}$	20		50	$\text{k}\Omega$
Power supply current active mode	16MHz, $V_{CC} = 5\text{V}$	$I_{CC}$		10	15	mA
	8MHz, $V_{CC} = 5\text{V}$	$I_{CC}$		5.5	8.0	mA
	8MHz, $V_{CC} = 3\text{V}$	$I_{CC}$		2.8	4.0	mA
	4MHz, $V_{CC} = 3\text{V}$	$I_{CC}$		1.8	3.0	mA
Power supply current idle mode	16MHz, $V_{CC} = 5\text{V}$	$I_{CC}$		3.5	6.0	mA
	8MHz, $V_{CC} = 5\text{V}$	$I_{CC}$		1.8	3.0	mA
	8MHz, $V_{CC} = 3\text{V}$	$I_{CC}$		1.0	2.0	mA
	4MHz, $V_{CC} = 3\text{V}$	$I_{CC}$		0.5	1.0	mA
Power supply current power-down mode	WDT enabled, $V_{CC} = 5\text{V}$	$I_{CC}$		7	150	$\mu\text{A}$
	WDT disabled, $V_{CC} = 5\text{V}$	$I_{CC}$		0.18	150	$\mu\text{A}$
	WDT enabled, $V_{CC} = 3\text{V}$	$I_{CC}$		5	150	$\mu\text{A}$
	WDT disabled, $V_{CC} = 3\text{V}$	$I_{CC}$		0.15	100	$\mu\text{A}$
Analog comparator input leakage current	$V_{CC} = 5\text{V}$ $V_{in} = V_{CC}/2$	$I_{ACLK}$	-50		+50	nA
Analog comparator propagation delay	$V_{CC} = 4.0\text{V}$	$t_{ACPD}$		180		ns

- Notes:
1. "Max" means the highest value where the pin is guaranteed to be read as low
  2. "Min" means the lowest value where the pin is guaranteed to be read as high
  3. Although each I/O port can sink more than the test conditions (20mA at  $V_{CC} = 5\text{V}$ ) under steady state conditions (non-transient), the following must be observed:
    - 1] The sum of all IOL, for all ports, should not exceed 400mA.
    - 2] The sum of all IOL, for ports C0 - C5, should not exceed 200mA.
    - 3] The sum of all IOL, for ports C6, D0 - D4, should not exceed 300mA.
    - 4] The sum of all IOL, for ports B0 - B7, D5 - D7, should not exceed 300mA.
 If IOL exceeds the test condition, VOL may exceed the related specification. Pins are not guaranteed to sink current greater than the listed test condition.
  4. For temperature range  $+125^{\circ}\text{C}$  to  $+150^{\circ}\text{C}$  only. For  $-40^{\circ}\text{C}$  to  $+125^{\circ}\text{C}$ , refer to ATtiny167 automotive datasheet.

### 1.3 ADC Characteristics

$T_A = -40^{\circ}\text{C}$  to  $+150^{\circ}\text{C}$ ,  $V_{CC} = 4.5\text{V}$  to  $5.5\text{V}$  (unless otherwise noted)

Parameters	Test Conditions	Symbol	Min.	Typ.	Max.	Unit
Resolution	Single ended			10		Bit
Absolute accuracy	$V_{CC} = 4\text{V}$ , $V_{REF} = 4\text{V}$ , ADC clock = 200kHz	TUE		2.0	3.5	LSB
Integral non linearity	$V_{CC} = 4\text{V}$ , $V_{REF} = 4\text{V}$ , ADC clock = 200kHz	INL		0.6	2.0	LSB
Differential non linearity	$V_{CC} = 4\text{V}$ , $V_{REF} = 4\text{V}$ , ADC clock = 200kHz, Temp = $-40^{\circ}\text{C}$ to $+150^{\circ}\text{C}$	DNL		0.4	1.5	LSB
Gain error	$V_{CC} = 4\text{V}$ , $V_{REF} = 4\text{V}$ , ADC clock = 200kHz, Temp = $-40^{\circ}\text{C}$ to $+150^{\circ}\text{C}$		-6.0	-2.5	+2.0	LSB
Offset error	$V_{CC} = 4\text{V}$ , $V_{REF} = 4\text{V}$ , ADC clock = 200kHz, Temp = $-40^{\circ}\text{C}$ to $+150^{\circ}\text{C}$		-3.5	+1.5	+3.5	LSB
Ref voltage		$V_{REF}$	2.56		AVCC	V

### 1.4 Memory Endurance

EEPROM endurance: 50,000 write/erase cycles.

Flash endurance: 10,000 write/erase cycles.

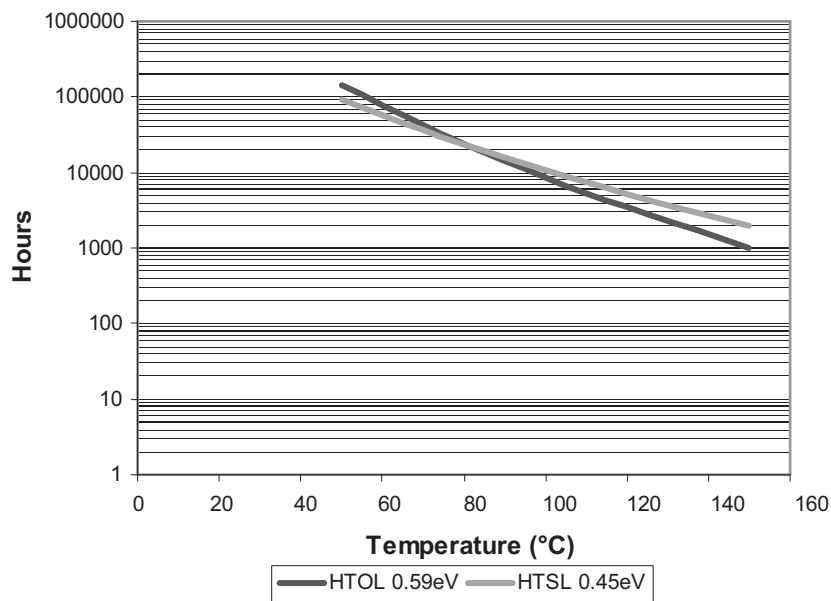
## 2. Grade 0 Qualification

The ATtiny87/ATtiny167 has been developed and manufactured according to the most stringent quality assurance requirements of ISO-TS-16949 and verified during product qualification as per AEC-Q100 grade 0.

AEC-Q100 qualification relies on temperature accelerated stress testing. High temperature field usage however may result in less significant stress test acceleration. In order to prevent the risk that ATtiny87/ATtiny167 lifetime would not satisfy the application end-of-life reliability requirements, Atmel® has extended the testing, whenever applicable (high temperature operating life test, high temperature storage life, data retention, thermal cycles), far beyond the AEC-Q100 requirements. Thereby, Atmel verified the ATtiny87/ATtiny167 has a long safe lifetime period after the grade 0 qualification acceptance limits.

The valid domain calculation depends on the activation energy of the potential failure mechanism that is considered. Therefore any temperature mission profile which could exceed the AEC-Q100 equivalence domain shall be submitted to Atmel for a thorough reliability analysis

**Figure 2-1. AEC-Q100 Lifetime Equivalence**



### 3. Ordering Information

Speed (MHz)	Power Supply	Ordering Code	Package <sup>(1)</sup>	Operation Range
16 <sup>(2)</sup>	4.5V - 5.5V	ATtiny87-A15MD	PN	Extended (–40°C to +150°C)
16 <sup>(2)</sup>	4.5V - 5.5V	ATtiny87-A15XD	6G	Extended (–40°C to +150°C)
16 <sup>(2)</sup>	4.5V - 5.5V	ATtiny167-A15MD	PN	Extended (–40°C to +150°C)
16 <sup>(2)</sup>	4.5V - 5.5V	ATtiny167-A15XD	6G	Extended (–40°C to +150°C)

- Notes:
1. Pb-free packaging, complies to the european directive for restriction of hazardous substances (RoHS directive). Also halide free and fully green.
  2. For speed versus  $V_{CC}$ , see complete datasheet.

### 4. Package Information

Package Type	
PN	32-pad, 5 × 5 × 1.0mm body, lead pitch 0.50mm, quad flat no-lead/micro lead frame package (QFN/MLF): E2/D2 3.1 ±0.1mm
6G	20-leads, 4.4 × 6.5mm body - 0.65mm pitch - lead length: 0.6mm, thin shrink small outline package (TSSOP)

Figure 4-1. PN

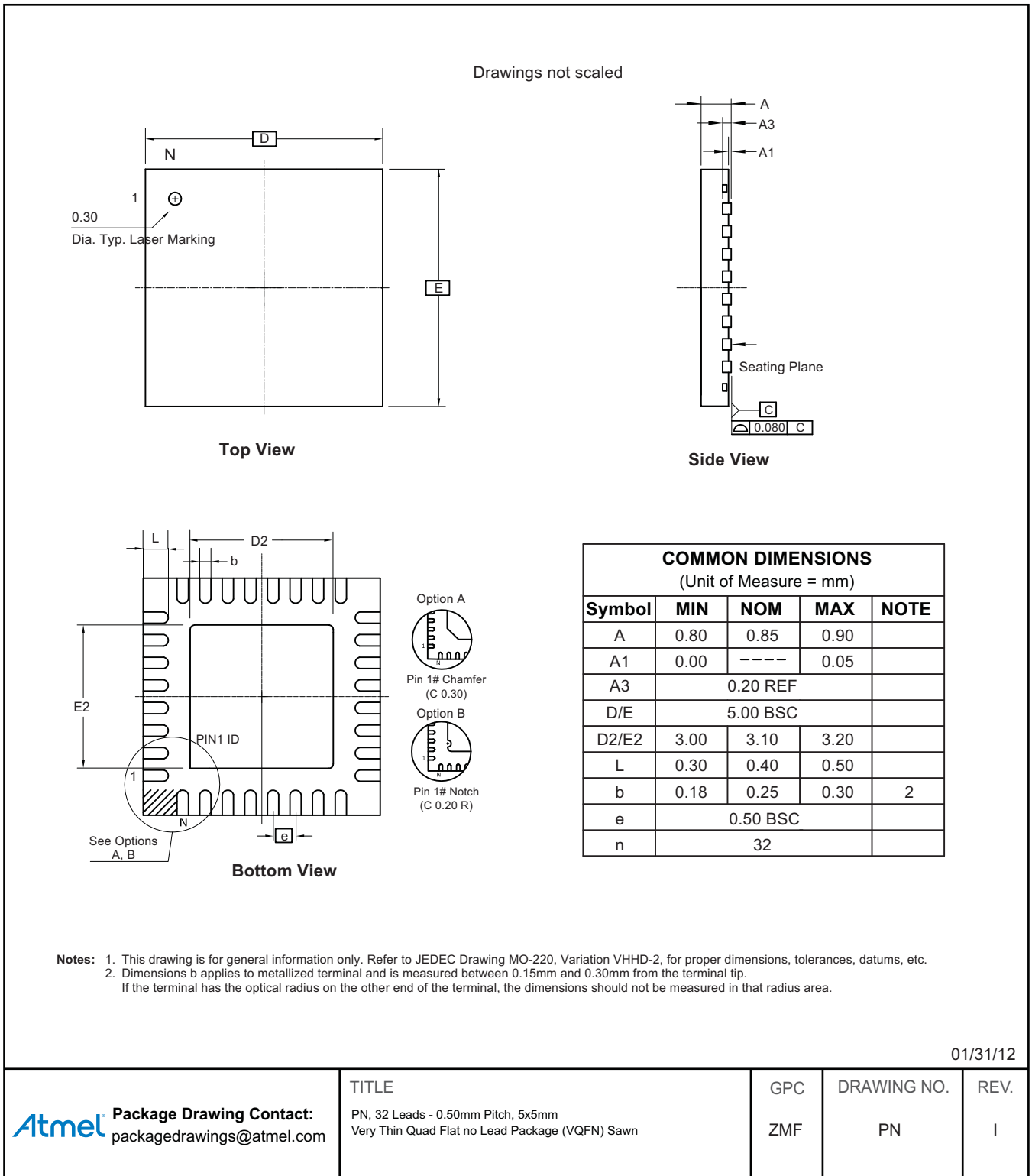
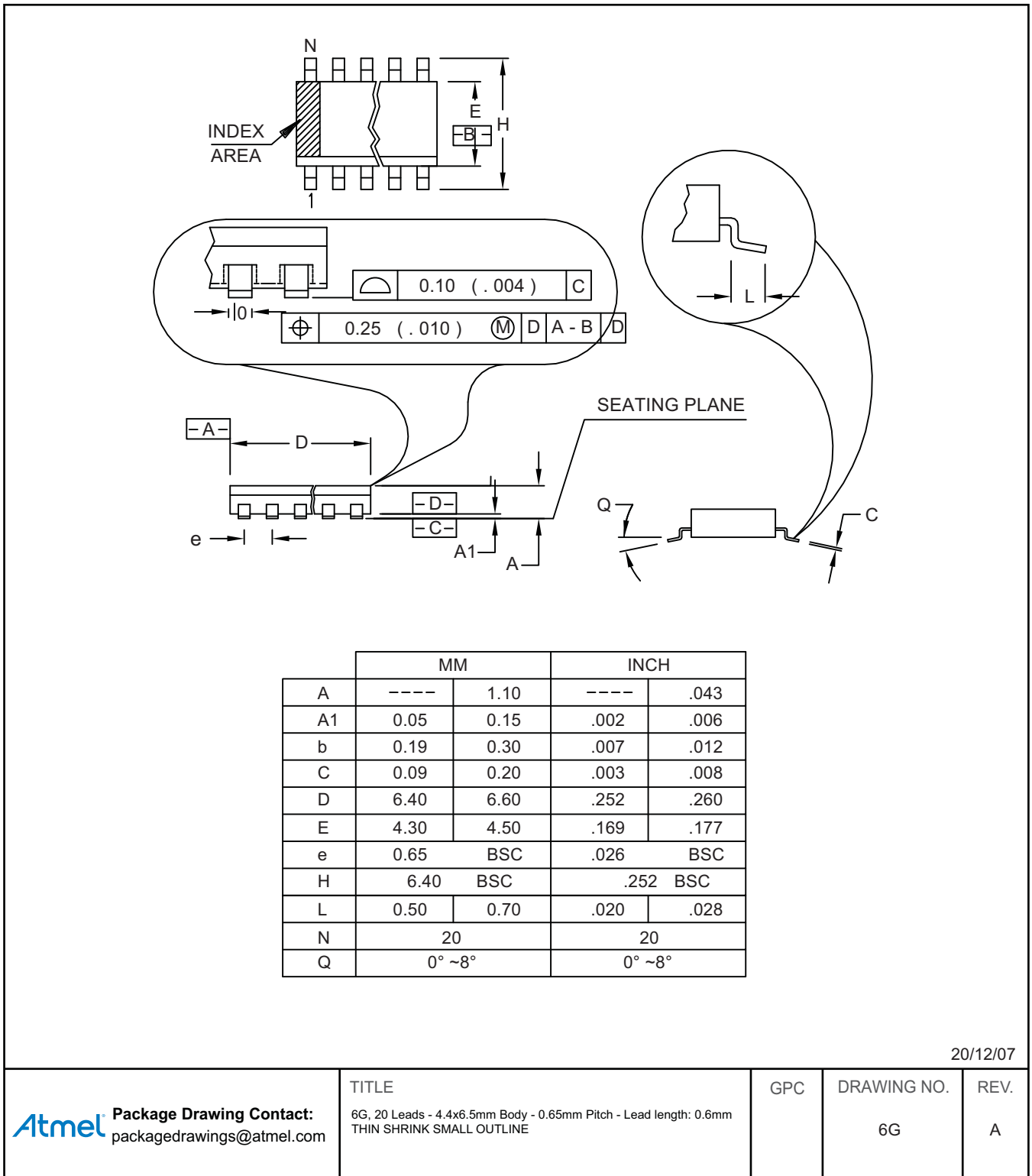


Figure 4-2. 6G



20/12/07

**Atmel** Package Drawing Contact:  
packagedrawings@atmel.com

TITLE  
6G, 20 Leads - 4.4x6.5mm Body - 0.65mm Pitch - Lead length: 0.6mm  
THIN SHRINK SMALL OUTLINE

GPC	DRAWING NO.	REV.
	6G	A



## 5. Revision History

Please note that the following page numbers referred to in this section refer to the specific revision mentioned, not to this document.

Revision No.	History
7792D-AVR-08/14	• Put datasheet in the latest template
7792C-AVR-01/14	• Section 3 “Ordering Information” on page 6 updated
7792B-AVR-05/09	• Section 1 “Electrical Characteristics” on pages 2 to 4 updated



## X-ON Electronics

Largest Supplier of Electrical and Electronic Components

*Click to view similar products for [8-bit Microcontrollers - MCU category](#):*

*Click to view products by [Microchip manufacturer](#):*

Other Similar products are found below :

[CY8C20524-12PVXIT](#) [MB95F013KPMC-G-SNE2](#) [MB95F263KPF-G-SNE2](#) [MB95F264KPFT-G-SNE2](#) [MB95F398KPMC-G-SNE2](#)  
[MB95F478KPMC2-G-SNE2](#) [MB95F564KPF-G-SNE2](#) [MB95F636KWQN-G-SNE1](#) [MB95F696KPMC-G-SNE2](#) [MB95F698KPMC2-G-SNE2](#)  
[MB95F698KPMC-G-SNE2](#) [MB95F818KPMC1-G-SNE2](#) [901015X](#) [CY8C3MFIDOCK-125](#) [403708R](#) [MB95F354EPF-G-SNE2](#)  
[MB95F564KWQN-G-SNE1](#) [MB95F636KP-G-SH-SNE2](#) [MB95F694KPMC-G-SNE2](#) [MB95F778JPMC1-G-SNE2](#) [MB95F818KPMC-G-SNE2](#)  
[LC87F0G08AUJA-AH](#) [CP8361BT](#) [CG8421AF](#) [MB95F202KPF-G-SNE2](#) [DF36014FPV](#) [5962-8768407MUA](#) [MB95F318EPMC-G-SNE2](#)  
[MB94F601APMC1-GSE1](#) [MB95F656EPF-G-SNE2](#) [LC78615E-01US-H](#) [LC87F5WC8AVU-QIP-H](#) [MB95F108AJSPMC-G-JNE1](#) [73S1210F-](#)  
[68M/F/PJ](#) [MB89F538-101PMC-GE1](#) [LC87F7DC8AVU-QIP-H](#) [MB95F876KPMC-G-SNE2](#) [MB88386PMC-GS-BNDE1](#) [LC87FBK08AU-](#)  
[SSOP-H](#) [LC87F2C64AU-QFP-H](#) [MB95F636KNWQN-G-118-SNE1](#) [MB95F136NBSTPFV-GS-N2E1](#) [LC87F5NC8AVU-QIP-E](#)  
[LC87F76C8AU-TQFP-E](#) [LC87F2G08AU-SSOP-E](#) [CP8085AT](#) [MB95F564KPF-G-UNE2](#) [MC9S08PA4VWJ](#) [MC9S08QG8CDTE](#)  
[MC9S08SH4CWJR](#)