



MICROCHIP

Dawn GUI User's Guide

Note the following details of the code protection feature on Microchip devices:

- Microchip products meet the specification contained in their particular Microchip Data Sheet.
- Microchip believes that its family of products is one of the most secure families of its kind on the market today, when used in the intended manner and under normal conditions.
- There are dishonest and possibly illegal methods used to breach the code protection feature. All of these methods, to our knowledge, require using the Microchip products in a manner outside the operating specifications contained in Microchip's Data Sheets. Most likely, the person doing so is engaged in theft of intellectual property.
- Microchip is willing to work with the customer who is concerned about the integrity of their code.
- Neither Microchip nor any other semiconductor manufacturer can guarantee the security of their code. Code protection does not mean that we are guaranteeing the product as "unbreakable."

Code protection is constantly evolving. We at Microchip are committed to continuously improving the code protection features of our products. Attempts to break Microchip's code protection feature may be a violation of the Digital Millennium Copyright Act. If such acts allow unauthorized access to your software or other copyrighted work, you may have a right to sue for relief under that Act.

Information contained in this publication regarding device applications and the like is provided only for your convenience and may be superseded by updates. It is your responsibility to ensure that your application meets with your specifications. MICROCHIP MAKES NO REPRESENTATIONS OR WARRANTIES OF ANY KIND WHETHER EXPRESS OR IMPLIED, WRITTEN OR ORAL, STATUTORY OR OTHERWISE, RELATED TO THE INFORMATION, INCLUDING BUT NOT LIMITED TO ITS CONDITION, QUALITY, PERFORMANCE, MERCHANTABILITY OR FITNESS FOR PURPOSE. Microchip disclaims all liability arising from this information and its use. Use of Microchip devices in life support and/or safety applications is entirely at the buyer's risk, and the buyer agrees to defend, indemnify and hold harmless Microchip from any and all damages, claims, suits, or expenses resulting from such use. No licenses are conveyed, implicitly or otherwise, under any Microchip intellectual property rights unless otherwise stated.

Trademarks

The Microchip name and logo, the Microchip logo, dsPIC, FlashFlex, flexPWR, JukeBlox, KEELOQ, KEELOQ logo, Kleer, LANCheck, MediaLB, MOST, MOST logo, MPLAB, OptoLyzer, PIC, PICSTART, PIC³² logo, RightTouch, SpyNIC, SST, SST Logo, SuperFlash and UNI/O are registered trademarks of Microchip Technology Incorporated in the U.S.A. and other countries.

The Embedded Control Solutions Company and mTouch are registered trademarks of Microchip Technology Incorporated in the U.S.A.

Analog-for-the-Digital Age, BodyCom, chipKIT, chipKIT logo, CodeGuard, dsPICDEM, dsPICDEM.net, ECAN, In-Circuit Serial Programming, ICSP, Inter-Chip Connectivity, KleerNet, KleerNet logo, MiWi, motorBench, MPASM, MPF, MPLAB Certified logo, MPLIB, MPLINK, MultiTRAK, NetDetach, Omniscient Code Generation, PICDEM, PICDEM.net, PICkit, PICtail, RightTouch logo, REAL ICE, SQI, Serial Quad I/O, Total Endurance, TSHARC, USBCheck, VariSense, ViewSpan, WiperLock, Wireless DNA, and ZENA are trademarks of Microchip Technology Incorporated in the U.S.A. and other countries.

SQTP is a service mark of Microchip Technology Incorporated in the U.S.A.

Silicon Storage Technology is a registered trademark of Microchip Technology Inc. in other countries.

GestIC is a registered trademark of Microchip Technology Germany II GmbH & Co. KG, a subsidiary of Microchip Technology Inc., in other countries.

All other trademarks mentioned herein are property of their respective companies.

© 2015, Microchip Technology Incorporated, Printed in the U.S.A., All Rights Reserved.

ISBN: 978-1-5224-0048-6

**QUALITY MANAGEMENT SYSTEM
CERTIFIED BY DNV
= ISO/TS 16949 =**

Microchip received ISO/TS-16949:2009 certification for its worldwide headquarters, design and wafer fabrication facilities in Chandler and Tempe, Arizona; Gresham, Oregon and design centers in California and India. The Company's quality system processes and procedures are for its PIC[®] MCUs and dsPIC[®] DSCs, KEELOQ[®] code hopping devices, Serial EEPROMs, microperipherals, nonvolatile memory and analog products. In addition, Microchip's quality system for the design and manufacture of development systems is ISO 9001:2000 certified.

Table of Contents

Preface	5
Chapter 1. Introduction	
1.1 System Requirement	9
1.2 Installation	10
1.3 Communication Protocol	10
1.3.1 Write Byte	10
1.3.2 Read Byte	10
1.3.3 Write Block	11
1.3.4 Read Block	11
1.4 Data Interpretation	11
Chapter 2. Dawn GUI Panel Layout and Operation	
2.1 Toolbar	13
2.2 Variable Control Panel	15
2.2.1 Add and Remove Variables	15
2.2.2 Read and Write Variable	16
2.3 Signal Control Panel	18
2.3.1 Add and remove signal	18
2.3.2 Signal display control	19
2.4 Signal Plotter Pattern	19
2.5 Signal Level Plotter	20
2.6 Event Log Panel	21
2.7 Dawn Application Setting Window	22
2.7.1 System Tab	22
2.7.2 User Interface Tab	23
2.7.3 Device Profile Panel	24
Worldwide Sales and Service	25

Dawn GUI User's Guide

NOTES:

Preface

NOTICE TO CUSTOMERS

All documentation becomes dated, and this manual is no exception. Microchip tools and documentation are constantly evolving to meet customer needs, so some actual dialogs and/or tool descriptions may differ from those in this document. Please refer to our website (www.microchip.com) to obtain the latest documentation available.

Documents are identified with a “DS” number. This number is located on the bottom of each page, in front of the page number. The numbering convention for the DS number is “DSXXXXA”, where “XXXX” is the document number and “A” is the revision level of the document.

For the most up-to-date information on development tools, see the MPLAB IDE online help. Select the Help menu, and then Topics to open a list of available online help files.

INTRODUCTION

This chapter contains general information that will be useful to know before using the Dawn GUI. Items discussed in this chapter include:

- [Document Layout](#)
- [Conventions Used in this Guide](#)
- [Warranty Registration](#)
- [Recommended Reading](#)
- [The Microchip Website](#)
- [Customer Support](#)
- [Document Revision History](#)

DOCUMENT LAYOUT

This document describes how to use the Dawn GUI as a development tool and debug firmware on a target board. The manual layout is as follows:

- **Chapter 1. “Introduction”** – Describes the system requirement and communication protocol of the Dawn GUI.
- **Chapter 2. “Dawn GUI Panel Layout and Operation”** – Explains the interface and operation of Dawn GUI in detail.

Dawn GUI User's Guide

CONVENTIONS USED IN THIS GUIDE

This manual uses the following documentation conventions:

DOCUMENTATION CONVENTIONS

Description	Represents	Examples
Arial font:		
Italic characters	Referenced books	"MPLAB [®] IDE User's Guide"
	Emphasized text	...is the <i>only</i> compiler...
Initial caps	A window	the Output window
	A dialog	the Settings dialog
	A menu selection	select Enable Programmer
Quotes	A field name in a window or dialog	"Save project before build"
Underlined, italic text with right angle bracket	A menu path	<u>File</u> > <i>Save</i>
Bold characters	A dialog button	Click OK
	A tab	Click the Power tab
Text in angle brackets < >	A key on the keyboard	Press <Enter>, <F1>
Courier New font:		
Plain Courier New	Sample source code	#define START
	Filenames	autoexec.bat
	File paths	c:\mcc18\h
	Keywords	_asm, _endasm, static
	Command-line options	-Opa+, -Opa-
	Bit values	0, 1
	Constants	0xFF, 'A'
Italic Courier New	A variable argument	<i>file.o</i> , where <i>file</i> can be any valid filename
Square brackets []	Optional arguments	mcc18 [options] <i>file</i> [options]
Curly brackets and pipe character: { }	Choice of mutually exclusive arguments; an OR selection	errorlevel {0 1}
Ellipses...	Replaces repeated text	var_name [, var_name...]
	Represents code supplied by user	

WARRANTY REGISTRATION

Please complete the enclosed Warranty Registration Card and mail it promptly. Sending in the Warranty Registration Card entitles users to receive new product updates. Interim software releases are available on the Microchip website.

RECOMMENDED READING

This user's guide describes how to use the Dawn GUI. Other useful documents are listed below. The following Microchip documents are available and recommended as supplemental reference resources.

Readme Files

For the latest information on using other tools, read the tool-specific Readme files in the Readmes subdirectory of the MPLAB® X IDE installation directory. The Readme files contain updated information and known issues that may not be included in this user's guide.

Low-Cost mTouch® Evaluation Kit User's Guide (DS40001818)

This user's guide gives an example of how to use the Dawn GUI for the mTouch applications.

THE MICROCHIP WEBSITE

Microchip provides online support via our website at www.microchip.com. This website is used as a means to make files and information easily available to customers. Accessible by using your favorite Internet browser, the website contains the following information:

- **Product Support** – Data sheets and errata, application notes and sample programs, design resources, user's guides and hardware support documents, latest software releases and archived software
- **General Technical Support** – Frequently Asked Questions (FAQs), technical support requests, online discussion groups, Microchip consultant program member listing
- **Business of Microchip** – Product selector and ordering guides, latest Microchip press releases, listing of seminars and events, listing of Microchip sales offices, distributors and factory representatives

CUSTOMER SUPPORT

Users of Microchip products can receive assistance through several channels:

- Distributor or Representative
- Local Sales Office
- Field Application Engineer (FAE)
- Technical Support
- Development Systems Information Line

Customers should contact their distributor, representative or Field Application Engineer (FAE) for support. Local sales offices are also available to help customers. A listing of sales offices and locations is included in the back of this document.

Technical support is available through the website at: <http://support.microchip.com>.

DOCUMENT REVISION HISTORY

Revision A (December 2015)

Initial Release of this Document.

Chapter 1. Introduction

The Dawn GUI is a PC utility designed to visualize the real-time data and configure the register of mTouch[®] firmware-based devices. A generic I²C communication protocol is used to communicate with the target board, so any products with the same protocol can also use this utility to monitor and/or configure the system, such as the Microchip CAP1xxx capacitive sensing devices, MCP9800 temperature sensing device, etc.

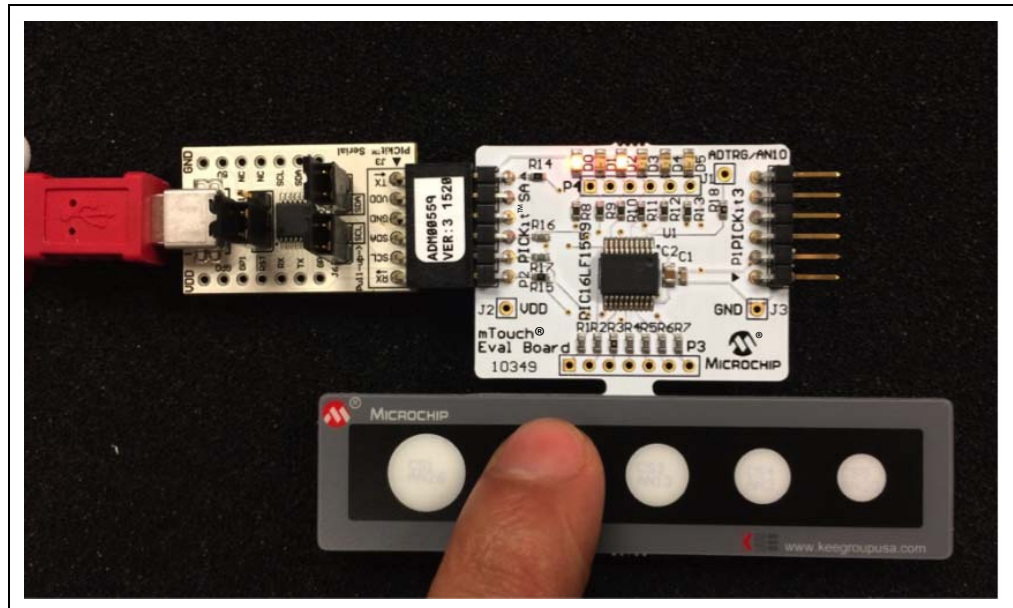
1.1 SYSTEM REQUIREMENT

In order to use the Dawn GUI, the user needs:

- The MCP2221 Breakout module, or other equivalent of the MCP2221 communication board with USB and I²C interface
- A PC running Windows[®] XP or higher with USB 2.0 port
- Mini-USB cable
- A product that uses compatible I²C protocol

Figure 1-1 shows a typical hardware setup for the low-cost mTouch evaluation kit.

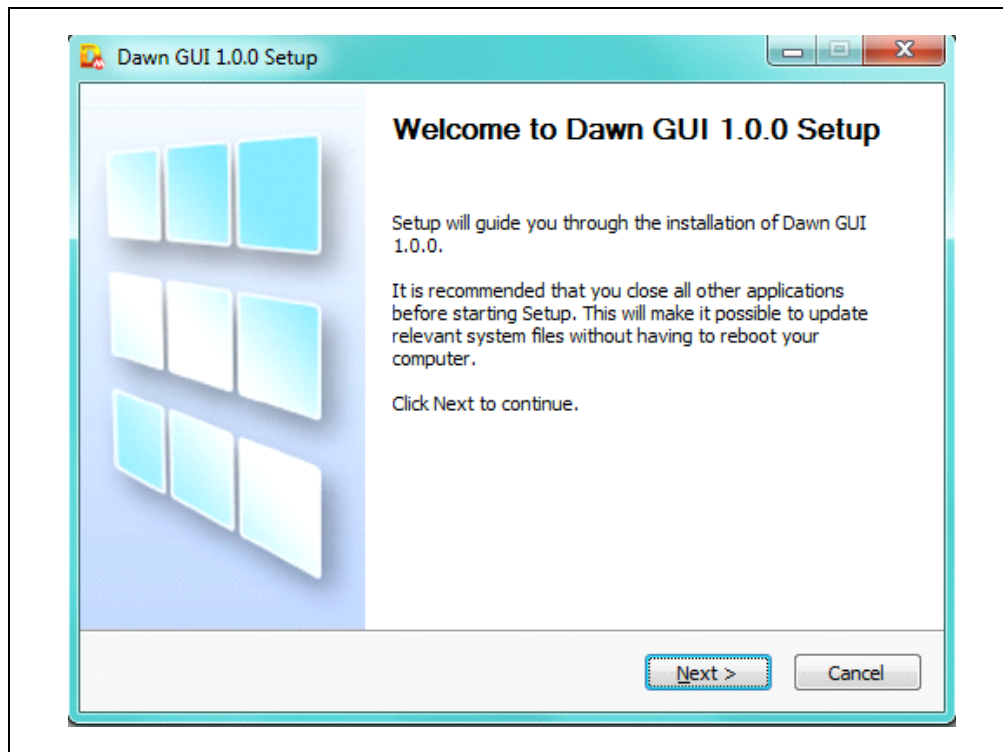
FIGURE 1-1: TYPICAL HARDWARE SETUP FOR DAWN GUI



1.2 INSTALLATION

The Dawn GUI can be downloaded from the Microchip website (www.microchip.com/dm160227). Unzip the file and run the Dawn 1.0 setup.exe; the installation process will start with [Figure 1-2](#), and then follow the installation to finish the setup.

FIGURE 1-2: DAWN GUI INSTALLATION



1.3 COMMUNICATION PROTOCOL

The Dawn GUI is implemented as the host of a generic I²C communication, which supports Read/Write byte and Read/Write block.

1.3.1 Write Byte

The Write Byte protocol is used to write one byte of data to a specific register as shown in [Table 1-1](#).

TABLE 1-1: WRITE BYTE PROTOCOL

Start	Slave Address	W	ACK	Register Address	ACK	Register Address	ACK	Stop
1->0	0b101000	0	0	XXh	0	XXh	0	0->1

1.3.2 Read Byte

The Read Byte protocol is used to read one byte of data from the register shown in [Table 1-3](#).

TABLE 1-2: READ BYTE PROTOCOL

Start	Slave Address	W	ACK	Register Address	ACK	Start	Slave Address	R	ACK	Register Data	Nack
1->0	0b101000	0	0	XXh	0	1->0	0b101000	1	0	XXh	1

1.3.3 Write Block

The Write Block protocol is used to read multiple bytes to a group of contiguous registers as shown in [Table 1-3](#).

TABLE 1-3: WRITE BLOCK PROTOCOL

Start	Slave Address	W	ACK	Register Address	ACK	Register Data	ACK	...	Register Data	ACK	Stop
1->0	0b101000	0	0	XXh	0	XXh	0	...	XXh	0	0->1
						data @ start address	data @ (start address + n)				

1.3.4 Read Block

The Read Block protocol is used to read multiple bytes from a group of contiguous registers as shown in [Table 1-4](#).

TABLE 1-4: READ BLOCK PROTOCOL

Start	Slave Address	W	ACK	Register Address	ACK	Start	Slave Address	R	ACK	Register Address	ACK
1->0	0b101000	0	0	XXh	0	1->0	0b101000	1	0	XXh	0
...	Register data n	Nack	Stop	data @ (start address + n)							
...	XXh	1	0->1								

1.4 DATA INTERPRETATION

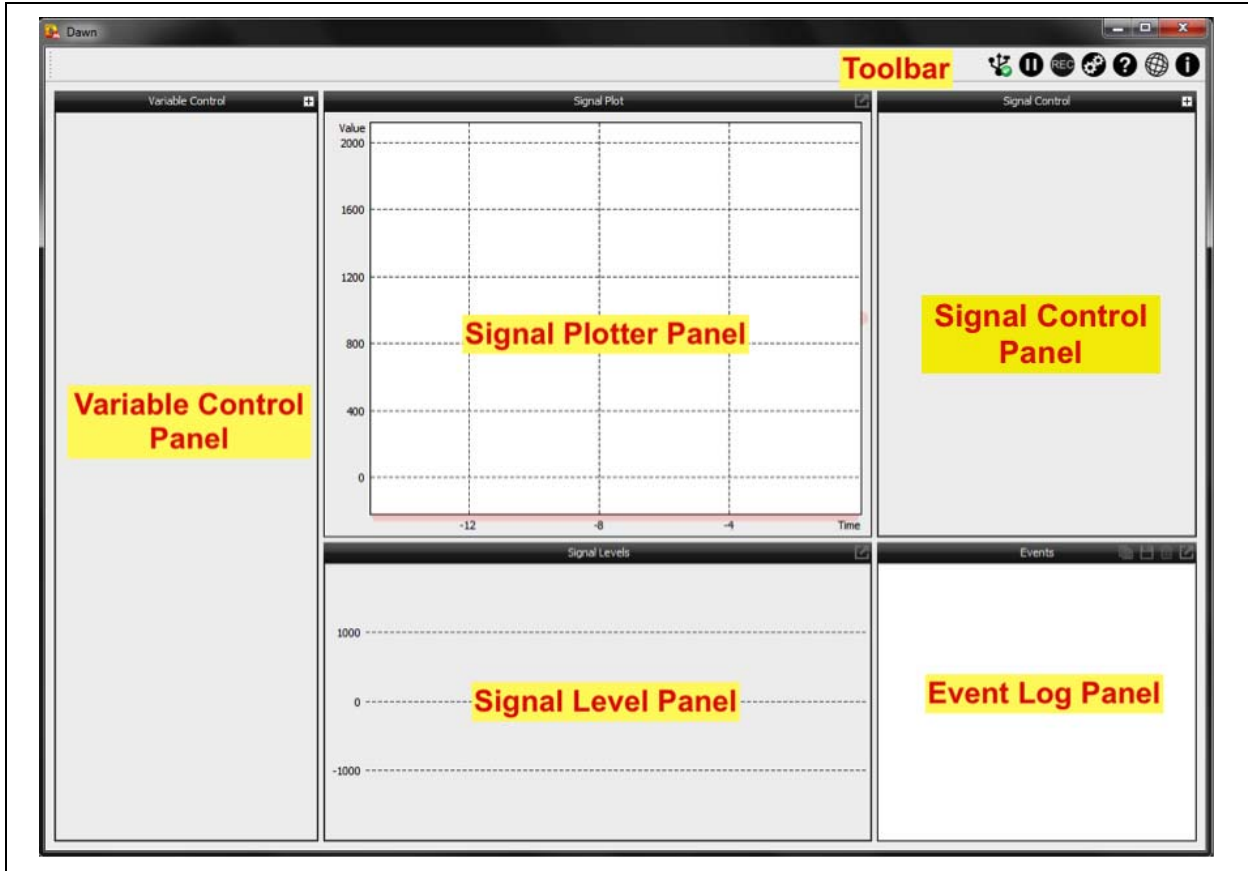
The data readout from the devices can be interpreted as different data type, including signed/unsigned 8-bit, 16-bit, 24-bit and 32-bit integer. More details will be discussed in the next chapter.

NOTES:

Chapter 2. Dawn GUI Panel Layout and Operation

The Dawn GUI Main window consists of a toolbar and five panels as shown in [Figure 2-1](#).

FIGURE 2-1: DAWN GUI MAIN WINDOW

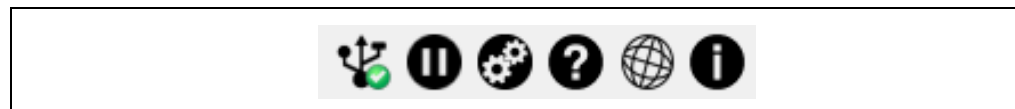


The size of each panel can be adjusted by dragging the edge of the panel container.

2.1 TOOLBAR

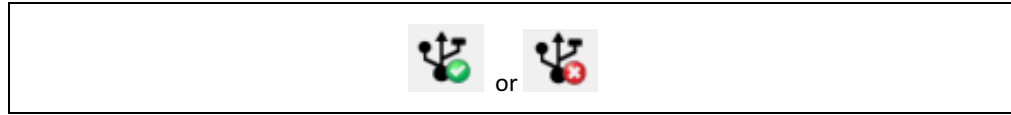
The Toolbar is located at the top of the Main window, it contains six icons as shown below (see [Figure 2-2](#)):

FIGURE 2-2: TOOLBAR



The first icon is an indicator of hardware connection. If the GUI detects the target board, then it will have the green check signed on the icon, otherwise, the red cross sign will appear (see [Figure 2-3](#)).

FIGURE 2-3: CONNECTION ICON



Clicking this icon will pause the data display in the signal plotter and the level panel (see [Figure 2-4](#)).

FIGURE 2-4: PAUSE ICON



Clicking this icon will bring up a Setting window, which will be discussed in the next section (see [Figure 2-5](#)).

FIGURE 2-5: SETTING ICON



This is a quick link to this user's guide (see [Figure 2-6](#)).

FIGURE 2-6: USER'S GUIDE ICON



Clicking this icon will open up the link specified in the profile (the Dawn profile will be covered in [Section 2.7.3 "Device Profile Panel"](#)), as can be seen in [Figure 2-7](#).

FIGURE 2-7: LINK ICON



Clicking this icon will bring up the Information window for the current GUI (see [Figure 2-8](#)).

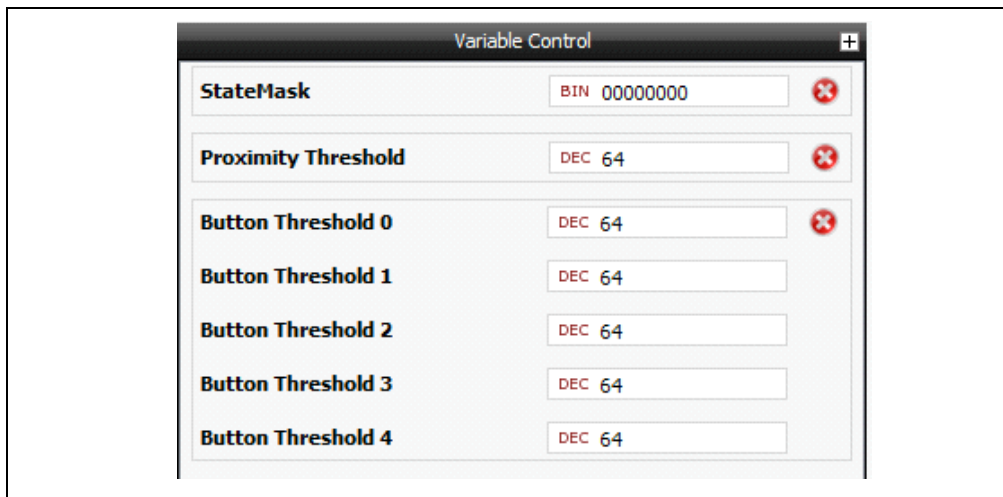
FIGURE 2-8: INFORMATION ICON



2.2 VARIABLE CONTROL PANEL

The Variable Control Panel displays the register value at the location that is assigned by the user. [Figure 2-9](#) shows an example of the mTouch evaluation kit.

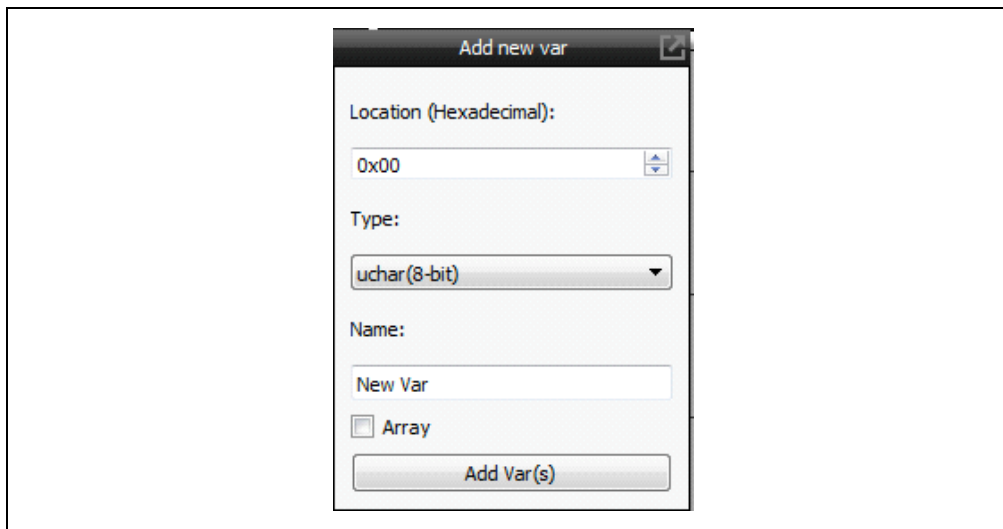
FIGURE 2-9: VARIABLE CONTROL PANEL



2.2.1 Add and Remove Variables

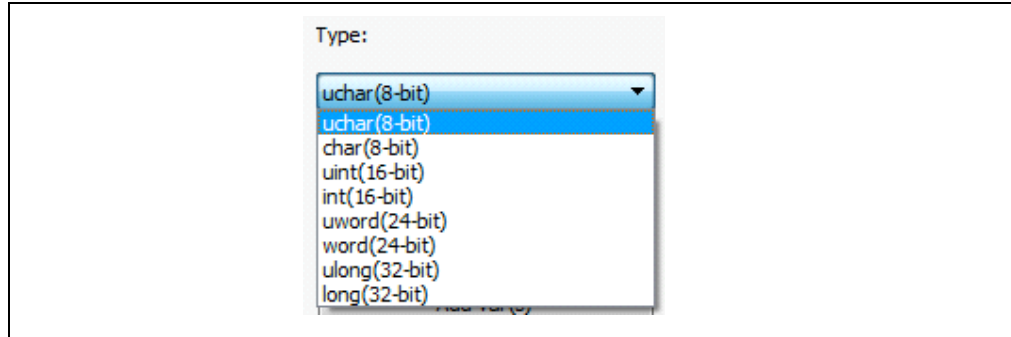
To add a variable to the panel, click the "+" on the top right corner. A window titled "Add new var" will be opened up as shown in [Figure 2-10](#).

FIGURE 2-10: NEW VARIABLE WINDOW



The variable address, type and name will be assigned in this window. There are eight variable type options as shown in [Figure 2-11](#).

FIGURE 2-11: VARIABLE TYPE LIST



By selecting a different variable type, the Dawn GUI will determine how many bytes need to be read from the target device. For instance, if "word (24-bit)" type is assigned to the address of 0x10, then the GUI will read three bytes from 0x10, 0x11 and 0x13 locations, and concatenate the three bytes following the little endian.

The "Array" checkbox is used to add an array variable and, as shown in [Figure 2-11](#), the "Button Threshold" variables were added as char (8-bit) array.

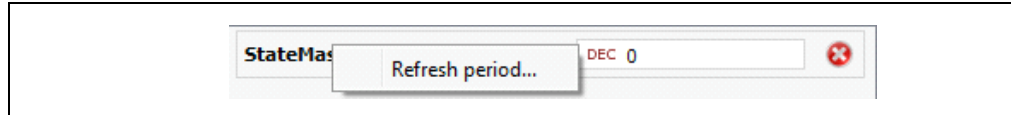
To remove any variable, click the cross icon to the right of the variable name.

Note 1: The array is considered a group, so the remove operation will remove all the array members.

2.2.2 Read and Write Variable

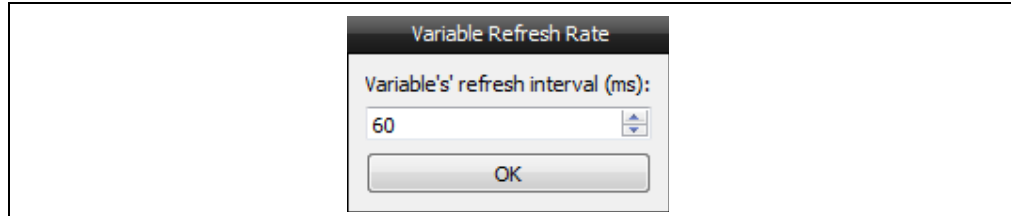
The GUI reads each variable from the target device at a fixed rate, and this rate can be altered by right clicking the variable name, as shown in [Figure 2-12](#).

FIGURE 2-12: REFRESH PERIOD



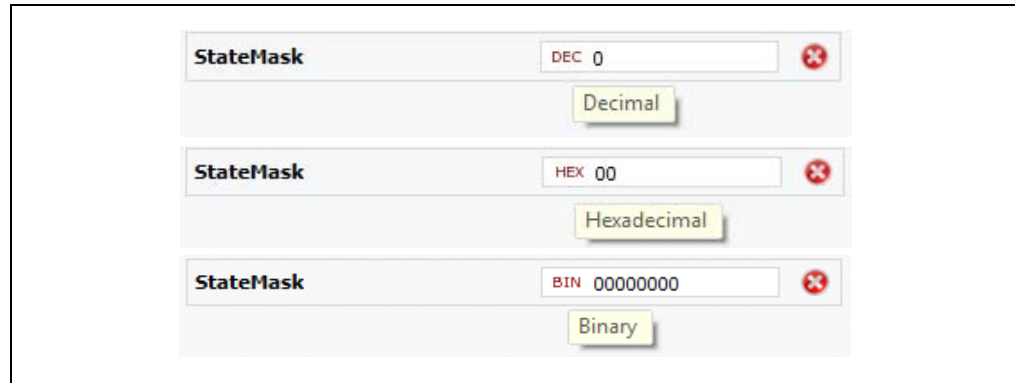
Click **Refresh period**, and the refresh period can be changed in the window as shown in [Figure 2-13](#).

FIGURE 2-13: REFRESH PERIOD SETTING



The GUI also allows displaying the variable in different formats, such as decimal, hexadecimal and binary. Clicking the red characters in front of the variable value will toggle the display format. The three display formats are shown in [Figure 2-14](#).

FIGURE 2-14: TOGGLE DISPLAY FORMAT



The GUI supports writing variable value back to the target device. For example, set the mouse cursor into the textbox as shown in [Figure 2-15](#), then the variable value can be edited. Hitting **Enter** on the keyboard will finalize the edit and write the value back to the target device.

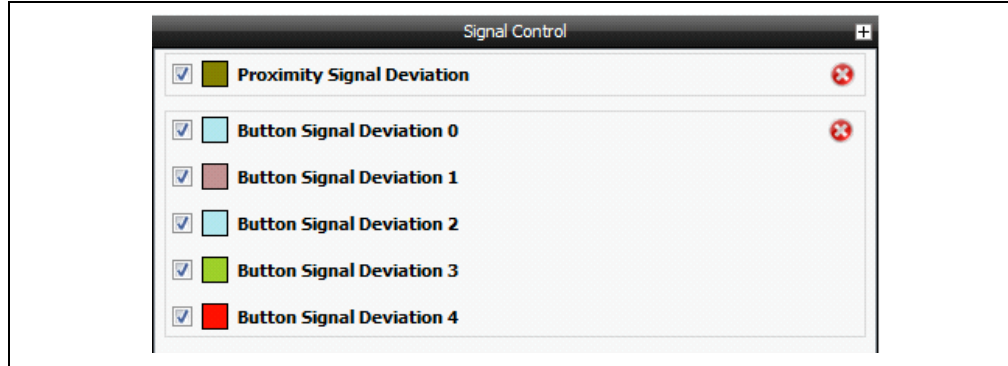
FIGURE 2-15: MODIFY REGISTER VALUE



2.3 SIGNAL CONTROL PANEL

The Signal Control Panel is very similar to the Variable Control Panel. It allows the user to observe the register value, but instead of displaying the value in digit format, the variable will be plotted in the Signal Plotter Panel and shown as a bar graph in the Signal Level panel (see [Figure 2-16](#)).

FIGURE 2-16: SIGNAL CONTROL PANEL



2.3.1 Add and Remove Signal

Clicking the "+" sign on the right top corner will bring up the window to specify the signal location, type and name as shown in [Figure 2-17](#).

FIGURE 2-17: NEW SIGNAL WINDOW



The signal level bar is optional, and a horizontal threshold bar can also be added for each signal in the Signal Level Panel. Note that the threshold is also a value read from target device, not an arbitrary number that can be set in the GUI.

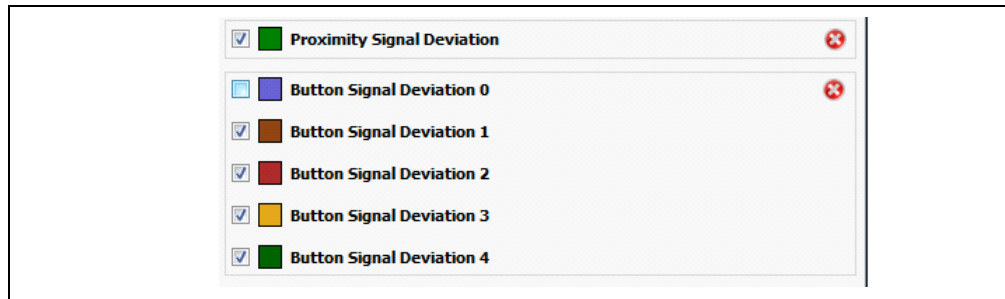
To remove any signal, click the **cross icon** to the right of the signal name, which is the same as the variable control.

2.3.2 Signal Display Control

Each signal will be assigned a color for plotter and level bar; the color indication is shown to the left of the signal names, and the refresh period of the signal can also be changed in the same fashion as the variable.

Unchecking the checkbox to the left of the signal color indication can temporarily disable the signal display. For example, the “Button Signal Deviation 0” signal display is disabled, as shown in [Figure 2-18](#).

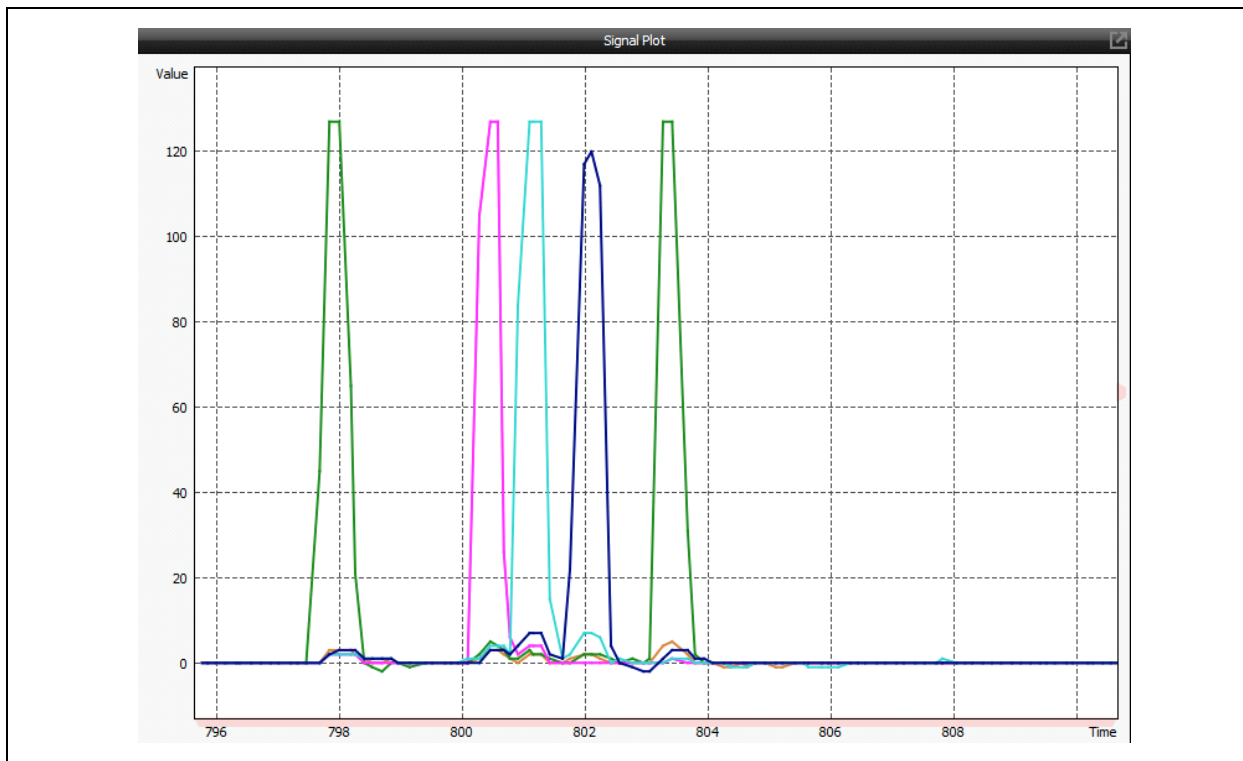
FIGURE 2-18: SIGNAL ENABLE WINDOW



2.4 SIGNAL PLOTTER PATTERN

The Signal Plotter Panel plots the signals that are enabled in the Signal Control Panel. Each signal is color-coded as shown in [Figure 2-19](#).

FIGURE 2-19: SIGNAL PLOTTER PANEL



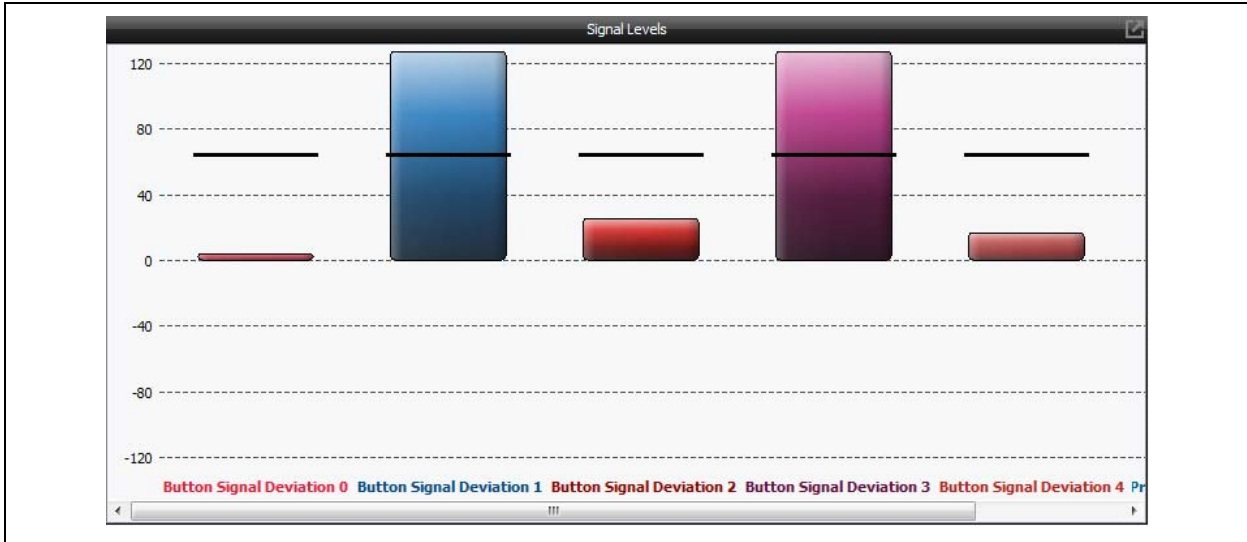
By default the plotter is in Auto-Zoom mode, which means the Y axis will be automatically adjusted, based of the signal value.

Scrolling up using the mouse wheel will zoom in the plotter, scrolling down will zoom out the plotter in the Y axis. Right clicking the plotter panel will restore the Auto-Zoom mode. For better observation, clicking the icon on the top right corner will put the plotter in Full-Screen mode.

2.5 SIGNAL LEVEL PLOTTER

The Signal Level Panel displays the signals in the bar graph as shown in [Figure 2-20](#).

FIGURE 2-20: SIGNAL LEVEL PANEL

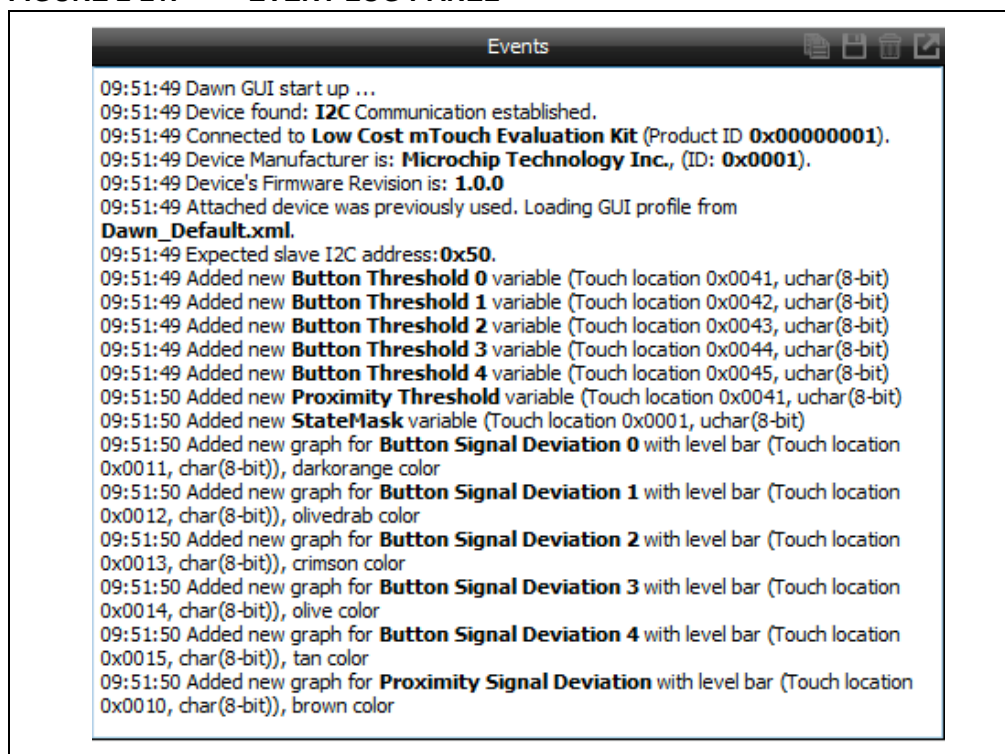


Similar to the Signal Plotter Panel, right clicking will auto-zoom the graph scale and Full-Screen mode can be enabled by clicking the icon on the top right corner.

2.6 EVENT LOG PANEL

The Event Log panel records the board information and the signal operations as shown in [Figure 2-21](#).

FIGURE 2-21: EVENT LOG PANEL

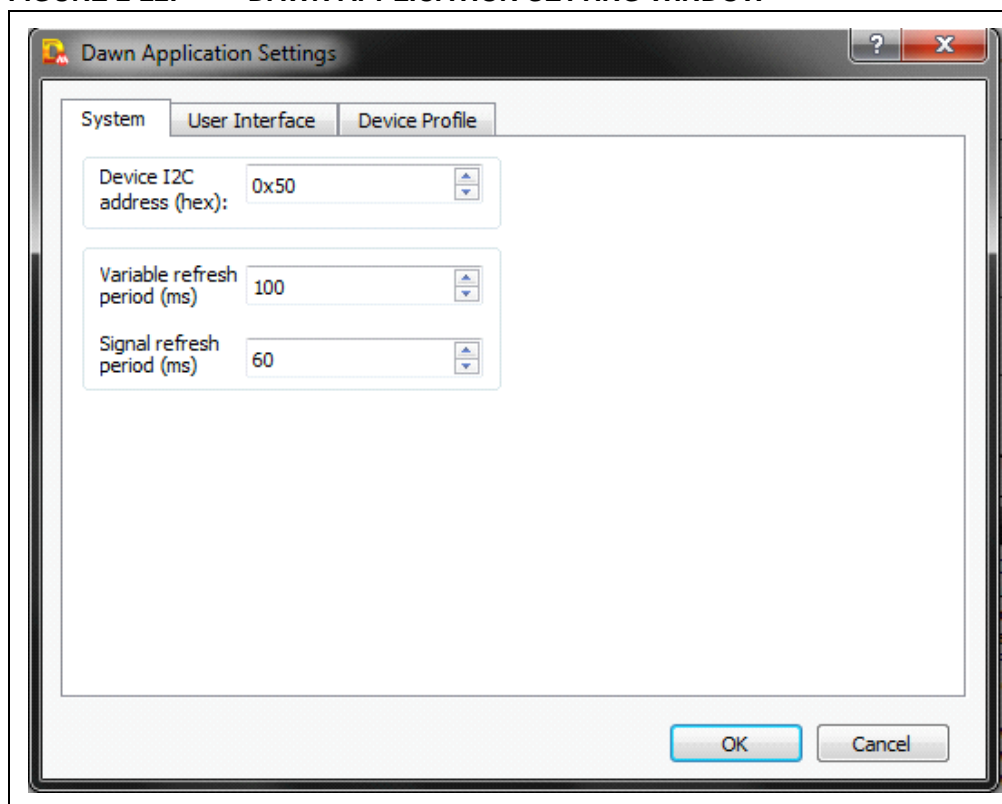


The events log can be saved to the system clipboard or to a .txt file by clicking the first two icons on the top right corner. The third icon will clear the Log window to give it a refresh start. The last icon is the same as in the Signal Plotter/Level Panel, which puts the panel into Full-Screen mode.

2.7 DAWN APPLICATION SETTING WINDOW

As mentioned in the Toolbar section, the 'Gear' icon will bring up the Dawn Application Settings window as shown in [Figure 2-22](#).

FIGURE 2-22: DAWN APPLICATION SETTING WINDOW



2.7.1 System Tab

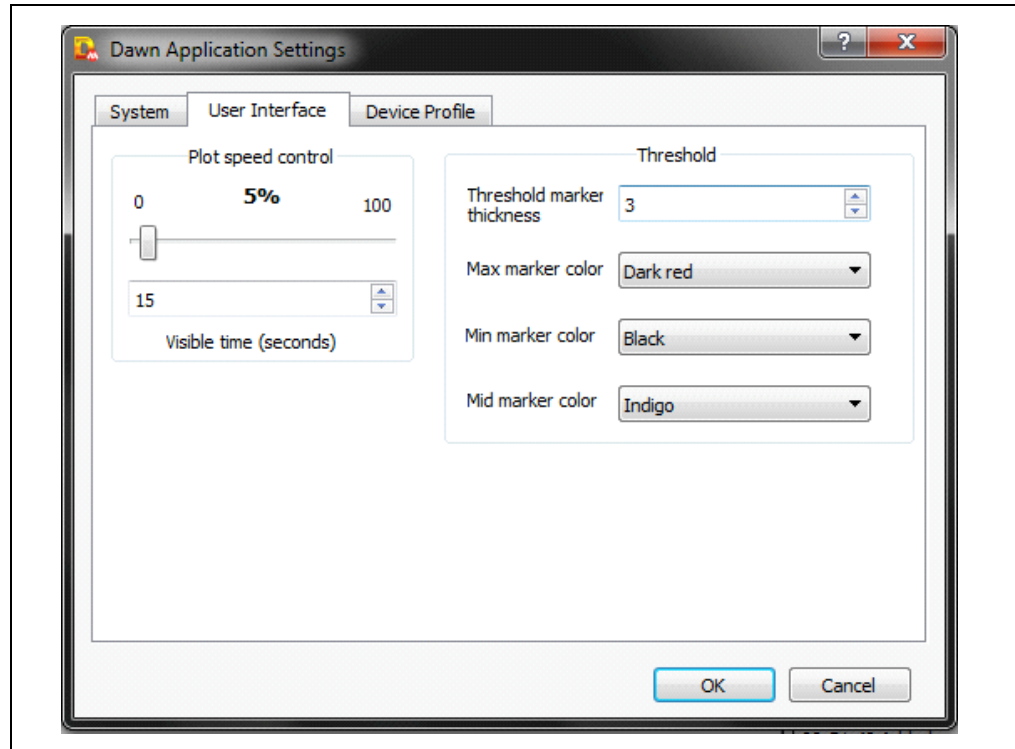
The **System** tab allows the user to change the expected target device address and refresh period of Variable and Signal display.

Note 1: The I²C address is in 8-bit format, which is the 7-bit address and a Read/Write bit.

2.7.2 User Interface Tab

The **User Interface** tab controls how the signals are displayed as shown in [Figure 2-23](#).

FIGURE 2-23: USER INTERFACE TAB

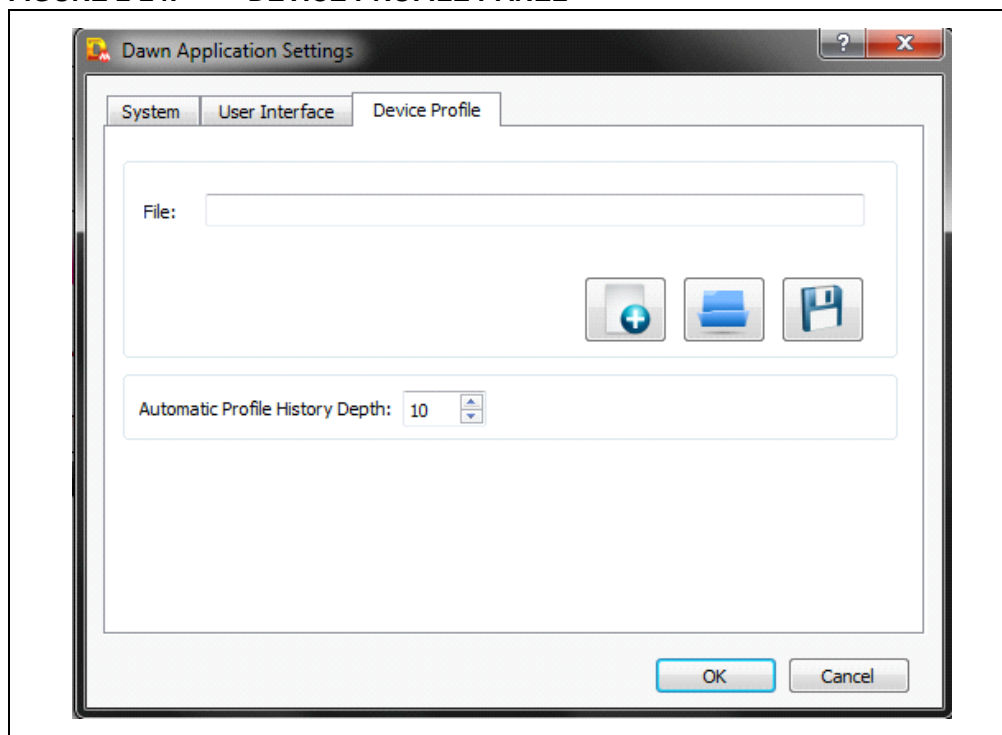


The plot speed control determines how many samples will be plotted in the Plotter window. The more visible time the user selects, the more samples the plotter displays, and the slower the plotter scrolls. The threshold container specifies the attributes for the threshold bar in the Signal Level Panel.

2.7.3 Device Profile Panel

The Device Profile Panel is a very handy feature, which eases the management of multiple profiles for different firmware/hardware.

FIGURE 2-24: DEVICE PROFILE PANEL



The profile of the Dawn GUI stores the device information and signal/variable configuration. Each time the user exits the Dawn GUI, the current information and configuration will be automatically stored in the `Dawn_default.xml` file in the installation folder, so next time the GUI can restore the last-time configuration. At the same time, the user can save and load profiles manually through the **Device Profile** tab as shown in [Figure 2-24](#).



MICROCHIP

Worldwide Sales and Service

AMERICAS

Corporate Office

2355 West Chandler Blvd.
Chandler, AZ 85224-6199
Tel: 480-792-7200
Fax: 480-792-7277
Technical Support:
<http://www.microchip.com/support>

Web Address:

www.microchip.com

Atlanta

Duluth, GA
Tel: 678-957-9614
Fax: 678-957-1455

Austin, TX

Tel: 512-257-3370

Boston

Westborough, MA
Tel: 774-760-0087
Fax: 774-760-0088

Chicago

Itasca, IL
Tel: 630-285-0071
Fax: 630-285-0075

Cleveland

Independence, OH
Tel: 216-447-0464
Fax: 216-447-0643

Dallas

Addison, TX
Tel: 972-818-7423
Fax: 972-818-2924

Detroit

Novi, MI
Tel: 248-848-4000

Houston, TX

Tel: 281-894-5983

Indianapolis

Noblesville, IN
Tel: 317-773-8323
Fax: 317-773-5453

Los Angeles

Mission Viejo, CA
Tel: 949-462-9523
Fax: 949-462-9608

New York, NY

Tel: 631-435-6000

San Jose, CA

Tel: 408-735-9110

Canada - Toronto

Tel: 905-673-0699
Fax: 905-673-6509

ASIA/PACIFIC

Asia Pacific Office

Suites 3707-14, 37th Floor
Tower 6, The Gateway
Harbour City, Kowloon

Hong Kong

Tel: 852-2943-5100
Fax: 852-2401-3431

Australia - Sydney

Tel: 61-2-9868-6733
Fax: 61-2-9868-6755

China - Beijing

Tel: 86-10-8569-7000
Fax: 86-10-8528-2104

China - Chengdu

Tel: 86-28-8665-5511
Fax: 86-28-8665-7889

China - Chongqing

Tel: 86-23-8980-9588
Fax: 86-23-8980-9500

China - Dongguan

Tel: 86-769-8702-9880

China - Hangzhou

Tel: 86-571-8792-8115
Fax: 86-571-8792-8116

China - Hong Kong SAR

Tel: 852-2943-5100
Fax: 852-2401-3431

China - Nanjing

Tel: 86-25-8473-2460
Fax: 86-25-8473-2470

China - Qingdao

Tel: 86-532-8502-7355
Fax: 86-532-8502-7205

China - Shanghai

Tel: 86-21-5407-5533
Fax: 86-21-5407-5066

China - Shenyang

Tel: 86-24-2334-2829
Fax: 86-24-2334-2393

China - Shenzhen

Tel: 86-755-8864-2200
Fax: 86-755-8203-1760

China - Wuhan

Tel: 86-27-5980-5300
Fax: 86-27-5980-5118

China - Xian

Tel: 86-29-8833-7252
Fax: 86-29-8833-7256

ASIA/PACIFIC

China - Xiamen

Tel: 86-592-2388138
Fax: 86-592-2388130

China - Zhuhai

Tel: 86-756-3210040
Fax: 86-756-3210049

India - Bangalore

Tel: 91-80-3090-4444
Fax: 91-80-3090-4123

India - New Delhi

Tel: 91-11-4160-8631
Fax: 91-11-4160-8632

India - Pune

Tel: 91-20-3019-1500

Japan - Osaka

Tel: 81-6-6152-7160
Fax: 81-6-6152-9310

Japan - Tokyo

Tel: 81-3-6880-3770
Fax: 81-3-6880-3771

Korea - Daegu

Tel: 82-53-744-4301
Fax: 82-53-744-4302

Korea - Seoul

Tel: 82-2-554-7200
Fax: 82-2-558-5932 or
82-2-558-5934

Malaysia - Kuala Lumpur

Tel: 60-3-6201-9857
Fax: 60-3-6201-9859

Malaysia - Penang

Tel: 60-4-227-8870
Fax: 60-4-227-4068

Philippines - Manila

Tel: 63-2-634-9065
Fax: 63-2-634-9069

Singapore

Tel: 65-6334-8870
Fax: 65-6334-8850

Taiwan - Hsin Chu

Tel: 886-3-5778-366
Fax: 886-3-5770-955

Taiwan - Kaohsiung

Tel: 886-7-213-7828

Taiwan - Taipei

Tel: 886-2-2508-8600
Fax: 886-2-2508-0102

Thailand - Bangkok

Tel: 66-2-694-1351
Fax: 66-2-694-1350

EUROPE

Austria - Wels

Tel: 43-7242-2244-39
Fax: 43-7242-2244-393

Denmark - Copenhagen

Tel: 45-4450-2828
Fax: 45-4485-2829

France - Paris

Tel: 33-1-69-53-63-20
Fax: 33-1-69-30-90-79

Germany - Dusseldorf

Tel: 49-2129-3766400

Germany - Karlsruhe

Tel: 49-721-625370

Germany - Munich

Tel: 49-89-627-144-0
Fax: 49-89-627-144-44

Italy - Milan

Tel: 39-0331-742611
Fax: 39-0331-466781

Italy - Venice

Tel: 39-049-7625286

Netherlands - Drunen

Tel: 31-416-690399
Fax: 31-416-690340

Poland - Warsaw

Tel: 48-22-3325737

Spain - Madrid

Tel: 34-91-708-08-90
Fax: 34-91-708-08-91

Sweden - Stockholm

Tel: 46-8-5090-4654

UK - Wokingham

Tel: 44-118-921-5800
Fax: 44-118-921-5820

07/14/15

X-ON Electronics

Largest Supplier of Electrical and Electronic Components

Click to view similar products for [Touch Sensor Development Tools](#) category:

Click to view products by [Microchip](#) manufacturer:

Other Similar products are found below :

[ATMXT1066T2-DEV-PCB](#) [ATMXT336UDEVPCB](#) [ATMXT641TDAT-I2C-PCB](#) [1374](#) [MIKROE-1906](#) [1602](#) [SEN0164](#) [1982](#) [STEVAL-PCC009V3](#) [ATSAMD20-QTRDEMO](#) [ATQT2-XPRO](#) [ATQT6-XPRO](#) [2340](#) [DM160221](#) [DM160229](#) [DM160222](#) [ATQT5-XPRO](#) [DFR0129](#) [SEN0170](#) [SLEXP8019A](#) [SLEXP8018A](#) [1375](#) [DFR0386](#) [SEN0186](#) [SEN0148](#) [DK-000013-03](#) [ROB0103](#) [cs-useful-01](#) [DFR0385](#) [SEN0184](#) [SX8651EVKA](#) [1362](#) [1580](#) [2024](#) [3575](#) [4830](#) [AS8579-TS_EK_DB](#) [ATQT600](#) [IQS227/228ASEV01](#) [SKU-6515](#) [CY3280-MBR2](#) [CY3280-MBR3](#) [DFR0030](#) [DM160219](#) [AC160219](#) [AC320007](#) [ATEVK-MXT1066T2-A](#) [ATEVK-MXT1189TAT-C](#) [ATEVK-MXT1189TDAT-A](#) [ATEVK-MXT1665TAT-C](#)