



**MICROCHIP**

---

**MCP23008/MCP23S08  
Evaluation Board  
User's Guide**

---

**Note the following details of the code protection feature on Microchip devices:**

- Microchip products meet the specification contained in their particular Microchip Data Sheet.
- Microchip believes that its family of products is one of the most secure families of its kind on the market today, when used in the intended manner and under normal conditions.
- There are dishonest and possibly illegal methods used to breach the code protection feature. All of these methods, to our knowledge, require using the Microchip products in a manner outside the operating specifications contained in Microchip's Data Sheets. Most likely, the person doing so is engaged in theft of intellectual property.
- Microchip is willing to work with the customer who is concerned about the integrity of their code.
- Neither Microchip nor any other semiconductor manufacturer can guarantee the security of their code. Code protection does not mean that we are guaranteeing the product as "unbreakable."

Code protection is constantly evolving. We at Microchip are committed to continuously improving the code protection features of our products. Attempts to break Microchip's code protection feature may be a violation of the Digital Millennium Copyright Act. If such acts allow unauthorized access to your software or other copyrighted work, you may have a right to sue for relief under that Act.

---

Information contained in this publication regarding device applications and the like is provided only for your convenience and may be superseded by updates. It is your responsibility to ensure that your application meets with your specifications. MICROCHIP MAKES NO REPRESENTATIONS OR WARRANTIES OF ANY KIND WHETHER EXPRESS OR IMPLIED, WRITTEN OR ORAL, STATUTORY OR OTHERWISE, RELATED TO THE INFORMATION, INCLUDING BUT NOT LIMITED TO ITS CONDITION, QUALITY, PERFORMANCE, MERCHANTABILITY OR FITNESS FOR PURPOSE. Microchip disclaims all liability arising from this information and its use. Use of Microchip devices in life support and/or safety applications is entirely at the buyer's risk, and the buyer agrees to defend, indemnify and hold harmless Microchip from any and all damages, claims, suits, or expenses resulting from such use. No licenses are conveyed, implicitly or otherwise, under any Microchip intellectual property rights.

**Trademarks**

The Microchip name and logo, the Microchip logo, Accuron, dsPIC, KEELOQ, microID, MPLAB, PIC, PICmicro, PICSTART, PRO MATE, PowerSmart, rPIC and SmartShunt are registered trademarks of Microchip Technology Incorporated in the U.S.A. and other countries.

AmpLab, FilterLab, Migratable Memory, MXDEV, MXLAB, SEEVAL, SmartSensor and The Embedded Control Solutions Company are registered trademarks of Microchip Technology Incorporated in the U.S.A.

Analog-for-the-Digital Age, Application Maestro, dsPICDEM, dsPICDEM.net, dsPICworks, ECAN, ECONOMONITOR, FanSense, FlexROM, fuzzyLAB, In-Circuit Serial Programming, ICSP, ICEPIC, Linear Active Thermistor, Mindi, MiWi, MPASM, MPLIB, MPLINK, PICKit, PICDEM, PICDEM.net, PICLAB, PICTail, PowerCal, PowerInfo, PowerMate, PowerTool, REAL ICE, rLAB, rPICDEM, Select Mode, Smart Serial, SmartTel, Total Endurance, UNI/O, WiperLock and ZENA are trademarks of Microchip Technology Incorporated in the U.S.A. and other countries.

SQTP is a service mark of Microchip Technology Incorporated in the U.S.A.

All other trademarks mentioned herein are property of their respective companies.

© 2006, Microchip Technology Incorporated, Printed in the U.S.A., All Rights Reserved.

 Printed on recycled paper.

**QUALITY MANAGEMENT SYSTEM  
CERTIFIED BY DNV  
== ISO/TS 16949:2002 ==**

*Microchip received ISO/TS-16949:2002 certification for its worldwide headquarters, design and wafer fabrication facilities in Chandler and Tempe, Arizona, Gresham, Oregon and Mountain View, California. The Company's quality system processes and procedures are for its PICmicro® 8-bit MCUs, KEELOQ® code hopping devices, Serial EEPROMs, microperipherals, nonvolatile memory and analog products. In addition, Microchip's quality system for the design and manufacture of development systems is ISO 9001:2000 certified.*



# MCP23008/MCP23S08 EVALUATION BOARD USER'S GUIDE

---

---

## Table of Contents

---

---

<b>Preface</b> .....	<b>1</b>
Introduction.....	1
Document Layout .....	1
Conventions Used in this Guide .....	2
Recommended Reading.....	2
The Microchip Web Site .....	3
Customer Support .....	3
Document Revision History .....	3
<b>Chapter 1. Product Overview</b>	
1.1 Introduction .....	5
1.2 What is the MCP23008/MCP23S08 Evaluation Board? .....	5
1.3 What the MCP23008/MCP23S08 Evaluation Board Kit Includes .....	5
<b>Chapter 2. Installation and Operation</b>	
2.4 Introduction .....	7
2.5 Features .....	7
2.6 Getting Started .....	8
2.7 Firmware Description .....	9
<b>Appendix A. Schematic and Layouts</b>	
A.1 Introduction .....	11
<b>Appendix B. Bill Of Materials (BOM)</b>	
<b>Appendix C. Firmware</b>	
C.1 Device Firmware .....	21
<b>Worldwide Sales and Service</b> .....	<b>22</b>

# MCP23008/MCP23S08 Evaluation Board User's Guide

---

---

NOTES:



# MCP23008/MCP23S08 EVALUATION BOARD USER'S GUIDE

---

---

## Preface

---

---

### NOTICE TO CUSTOMERS

All documentation becomes dated, and this manual is no exception. Microchip tools and documentation are constantly evolving to meet customer needs, so some actual dialogs and/or tool descriptions may differ from those in this document. Please refer to our web site ([www.microchip.com](http://www.microchip.com)) to obtain the latest documentation available.

Documents are identified with a “DS” number. This number is located on the bottom of each page, in front of the page number. The numbering convention for the DS number is “DSXXXXA”, where “XXXX” is the document number and “A” is the revision level of the document.

## INTRODUCTION

This chapter contains general information that will be useful to know before using the MCP23008/MCP23S08 Evaluation Board. Items discussed in this chapter include:

- Document Layout
- Conventions Used in this Guide
- Recommended Reading
- The Microchip Web Site
- Customer Support
- Document Revision History

## DOCUMENT LAYOUT

This document describes how to use the MCP23008/MCP23S08 Evaluation Board as a development tool. The manual layout is as follows:

- **Chapter 1. “Product Overview”** – Important information about the MCP23008/MCP23S08 Evaluation Board.
- **Chapter 2. “Installation and Operation”** – Includes instructions on how to get started with the MCP23008/MCP23S08 Evaluation Board.
- **Appendix A. “Schematic and Layouts”** – Shows the schematic and layout diagrams for the MCP23008/MCP23S08 Evaluation Board.
- **Appendix B. “Bill Of Materials (BOM)”** – Lists the parts used to build the MCP23008/MCP23S08 Evaluation Board.
- **Appendix C. “Firmware”** – Identifies where to obtain the latest version of firmware.

# MCP23008/MCP23S08 Evaluation Board User's Guide

## CONVENTIONS USED IN THIS GUIDE

This manual uses the following documentation conventions:

### DOCUMENTATION CONVENTIONS

Description	Represents	Examples
<b>Arial font:</b>		
Italic characters	Referenced books	<i>MPLAB® IDE User's Guide</i>
	Emphasized text	...is the <i>only</i> compiler...
Initial caps	A window	the Output window
	A dialog	the Settings dialog
	A menu selection	select Enable Programmer
Quotes	A field name in a window or dialog	"Save project before build"
Underlined, italic text with right angle bracket	A menu path	<u>File</u> > <i>Save</i>
Bold characters	A dialog button	Click <b>OK</b>
	A tab	Click the <b>Power</b> tab
N'Rnnnn	A number in verilog format, where N is the total number of digits, R is the radix and n is a digit.	4'b0010, 2'hF1
Text in angle brackets < >	A key on the keyboard	Press <Enter>, <F1>
<b>Courier New font:</b>		
Plain Courier New	Sample source code	#define START
	Filenames	autoexec.bat
	File paths	c:\mcc18\h
	Keywords	_asm, _endasm, static
	Command-line options	-Opa+, -Opa-
	Bit values	0, 1
	Constants	0xFF, 'A'
Italic Courier New	A variable argument	<i>file.o</i> , where <i>file</i> can be any valid filename
Square brackets [ ]	Optional arguments	mcc18 [options] <i>file</i> [options]
Curly brackets and pipe character: {   }	Choice of mutually exclusive arguments; an OR selection	errorlevel {0 1}
Ellipses...	Replaces repeated text	var_name [, var_name...]
	Represents code supplied by user	void main (void) { ... }

## RECOMMENDED READING

This user's guide describes how to use MCP23008/MCP23S08 Evaluation Board. The following Microchip documents are available and recommended as supplemental reference resources.

### **MCP23008/MCP23S08 Data Sheet, "8-Bit I/O Expander with Serial Interface" (DS21919)**

This data sheet provides detailed information regarding the MCP23008/MCP23S08 devices.

## THE MICROCHIP WEB SITE

Microchip provides online support via our web site at [www.microchip.com](http://www.microchip.com). This web site is used as a means to make files and information easily available to customers. Accessible by using your favorite Internet browser, the web site contains the following information:

- **Product Support** – Data sheets and errata, application notes and sample programs, design resources, user's guides and hardware support documents, latest software releases and archived software
- **General Technical Support** – Frequently Asked Questions (FAQs), technical support requests, online discussion groups, Microchip consultant program member listing
- **Business of Microchip** – Product selector and ordering guides, latest Microchip press releases, listing of seminars and events, listings of Microchip sales offices, distributors and factory representatives

## CUSTOMER SUPPORT

Users of Microchip products can receive assistance through several channels:

- Distributor or Representative
- Local Sales Office
- Field Application Engineer (FAE)
- Technical Support
- Development Systems Information Line

Customers should contact their distributor, representative or field application engineer for support. Local sales offices are also available to help customers. A listing of sales offices and locations is included in the back of this document.

Technical support is available through the web site at: <http://support.microchip.com>

## DOCUMENT REVISION HISTORY

### Revision B (July 2006)

- Added disclaimer to Bill of Materials regarding RoHS-compliant part numbers.

### Revision A (January 2005)

- Initial Release of this Document.

# MCP23008/MCP23S08 Evaluation Board User's Guide

---

NOTES:





# MCP23008/MCP23S08 EVALUATION BOARD USER'S GUIDE

---

---

## Chapter 1. Product Overview

---

---

### 1.1 INTRODUCTION

This chapter provides an overview of the MCP23008/MCP23S08 Evaluation Board and covers the following topics:

- What is the MCP23008/MCP23S08 Evaluation Board?
- What the MCP23008/MCP23S08 Evaluation Board Kit includes

### 1.2 WHAT IS THE MCP23008/MCP23S08 EVALUATION BOARD?

The MCP23008/MCP23S08 Evaluation Board allows the system designer to quickly evaluate the operation of the MCP23X08 8-bit GPIO expanders. The board demonstrates the I/O expansion capabilities/operation of both the MCP23008 (I<sup>2</sup>C™ interface) and MCP23S08 (SPI™ interface).

### 1.3 WHAT THE MCP23008/MCP23S08 EVALUATION BOARD KIT INCLUDES

This MCP23008/MCP23S08 Evaluation Board Kit includes:

- One MCP23008/MCP23S08 Evaluation Board
  - MCP23008 GPIO Expander with I<sup>2</sup>C interface (installed)
  - MCP23S08 GPIO Expander with SPI interface (installed)
- MCP23008/MCP23S08 Data Sheet (DS21919)  
(Electronic Version on CD)
- MCP23008/MCP23S08 Evaluation Board User's Guide (DS51530)  
(Electronic Version on CD)

# MCP23008/MCP23S08 Evaluation Board User's Guide

---

---

NOTES:

---

## Chapter 2. Installation and Operation

---

### 2.4 INTRODUCTION

This chapter discusses the setup and operation of the MCP23008/MCP23S08 Evaluation Board.

The MCP23008/MCP23S08 Evaluation Board is designed to demonstrate simple, low-cost input/output expansion using the MCP23X08 devices and a 6-pin PIC10F202 Microcontroller (MCU).

Four MCP23X08 pins are configured as inputs and four as outputs. When an input level is changed, the associated output pin is driven to the same level. This is accomplished by the MCU reading the input pins and writing the appropriate value to the output pins.

The MCP23X08 are provided in small, space-saving 20-lead SSOP packages. Adding the small 6-lead PIC10F202 device in a SOT-23 package makes for small overall PCB area.

### 2.5 FEATURES

The MCP23008/MCP23S08 Evaluation Board has the following features:

- Two (2) 8-bit GPIO expanders:
  - MCP23008 with I<sup>2</sup>C™ interface
  - MCP23S08 with SPI interface
- Switch for selecting between the two GPIO expanders
- Four switches and four LEDs (each connected to an individual GPIO pin) to demonstrate the input/output functionality
- Headers for the serial interface and GPIO port to allow evaluation in a user-defined application
- Jumpers (shorted by trace on the bottom of the PCB by default) to isolate the MCP23X08 device from the LEDs, switches and a PICmicro® MCU so that they can be evaluated in a custom circuit (See Figure 2-1)
- Header used for programming the PIC10F device using the Baseline Flash Microcontroller Programmer (BFMP)

**Note:** The ICD 2 can also be used to program the PICmicro MCU if the cable is modified to use an appropriate connector.

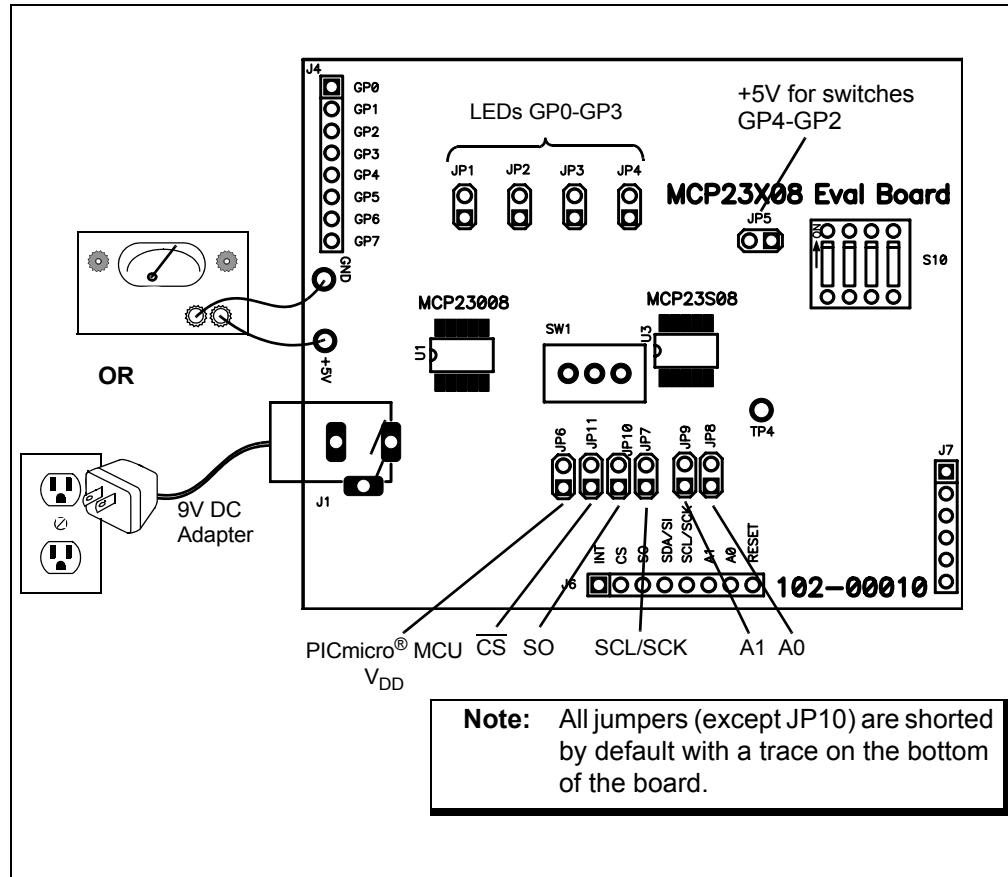
# MCP23008/MCP23S08 Evaluation Board User's Guide

## 2.6 GETTING STARTED

The MCP23008/MCP23S08 Evaluation Board is a fully functional, assembled and tested board for evaluation of the MCP23008 (I<sup>2</sup>C interface) and MCP23S08 (SPI interface) general purpose I/O expanders. The following describes the basic set-up and operation (see Figure 2-1):

1. Either connect a power supply (5 V) using the V<sub>DD</sub> and GND test points, or plug a 9V power supply or power adapter into the plug.
2. The "Power" LED will illuminate.
3. The device selector switch (SW1) selects between the two devices. Slide the switch towards the device of choice to select it.
4. Toggling the four switches will change the level on the associated GPIO pin configured as inputs.
5. Firmware will read the inputs and drive the corresponding MCP23X08 device output to the same level.

**FIGURE 2-1: JUMPER LOCATIONS**

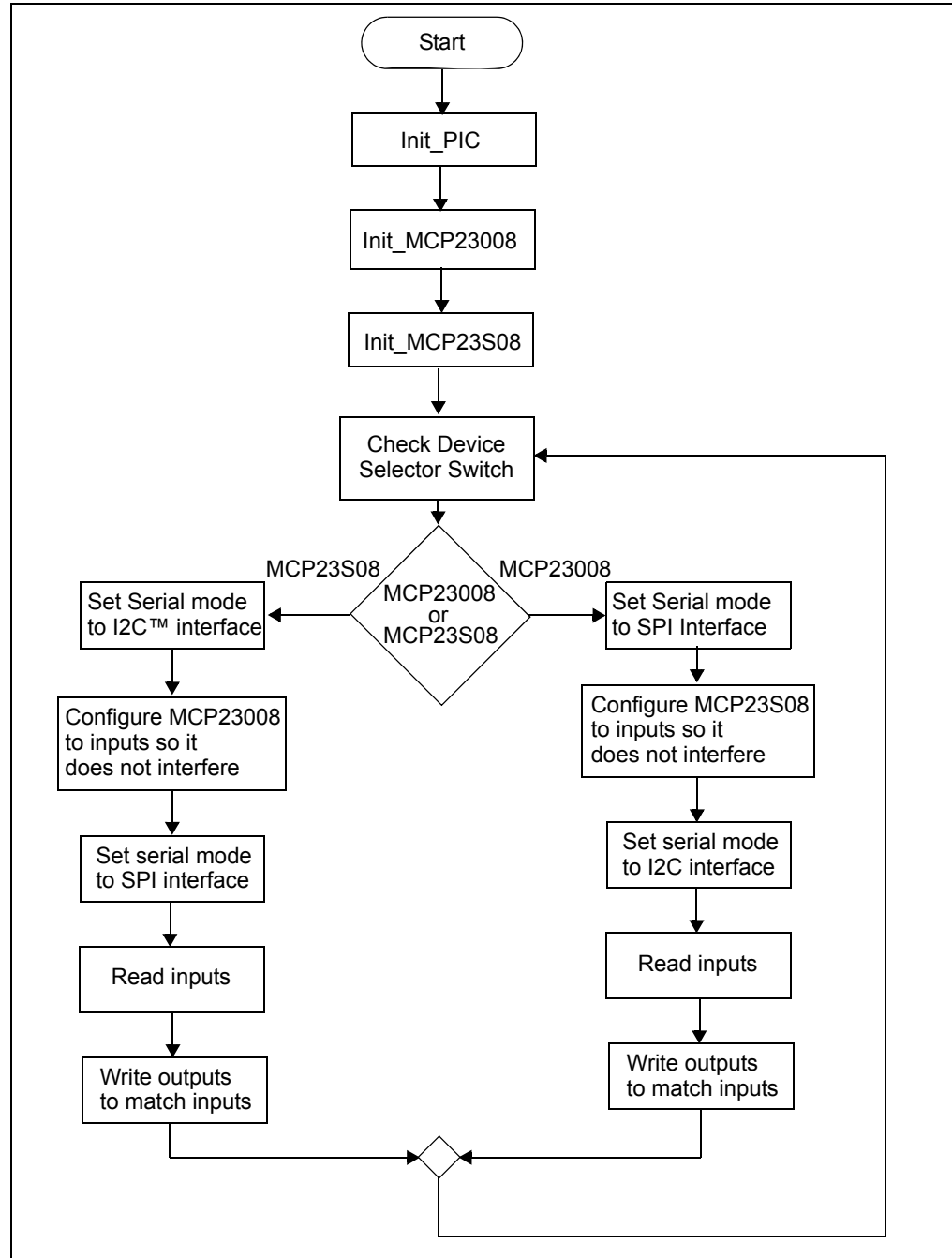


## 2.7 FIRMWARE DESCRIPTION

See Figure 2-2 for a simple firmware flow diagram.

1. The firmware first configures the PIC10F202 device followed by the two MCP23X08 devices.
2. The firmware checks the device selector switch to determine which device to communicate with during the main loop.
3. The appropriate MCP23X08 device inputs are sampled and the associated outputs are driven to the same level.
4. The program loops back to the toggle switch check.

**FIGURE 2-2: FIRMWARE FLOW DIAGRAM**



# MCP23008/MCP23S08 Evaluation Board User's Guide

---

NOTES:



# MCP23008/MCP23S08 EVALUATION BOARD USER'S GUIDE

---

---

## Appendix A. Schematic and Layouts

---

---

### A.1 INTRODUCTION

This appendix contains the schematic and PCB layout for the MCP23008/MCP23S08 Evaluation Board. Diagrams included:

- Board Schematic (Sheet 1 thru 4)
- Board - Top Layer (with silk screen only)
- Board - Top Layer
- Board - Bottom Layer

# MCP23008/MCP23S08 Evaluation Board User's Guide

FIGURE A-1: BOARD SCHEMATIC (SHEET 1 OF 4)

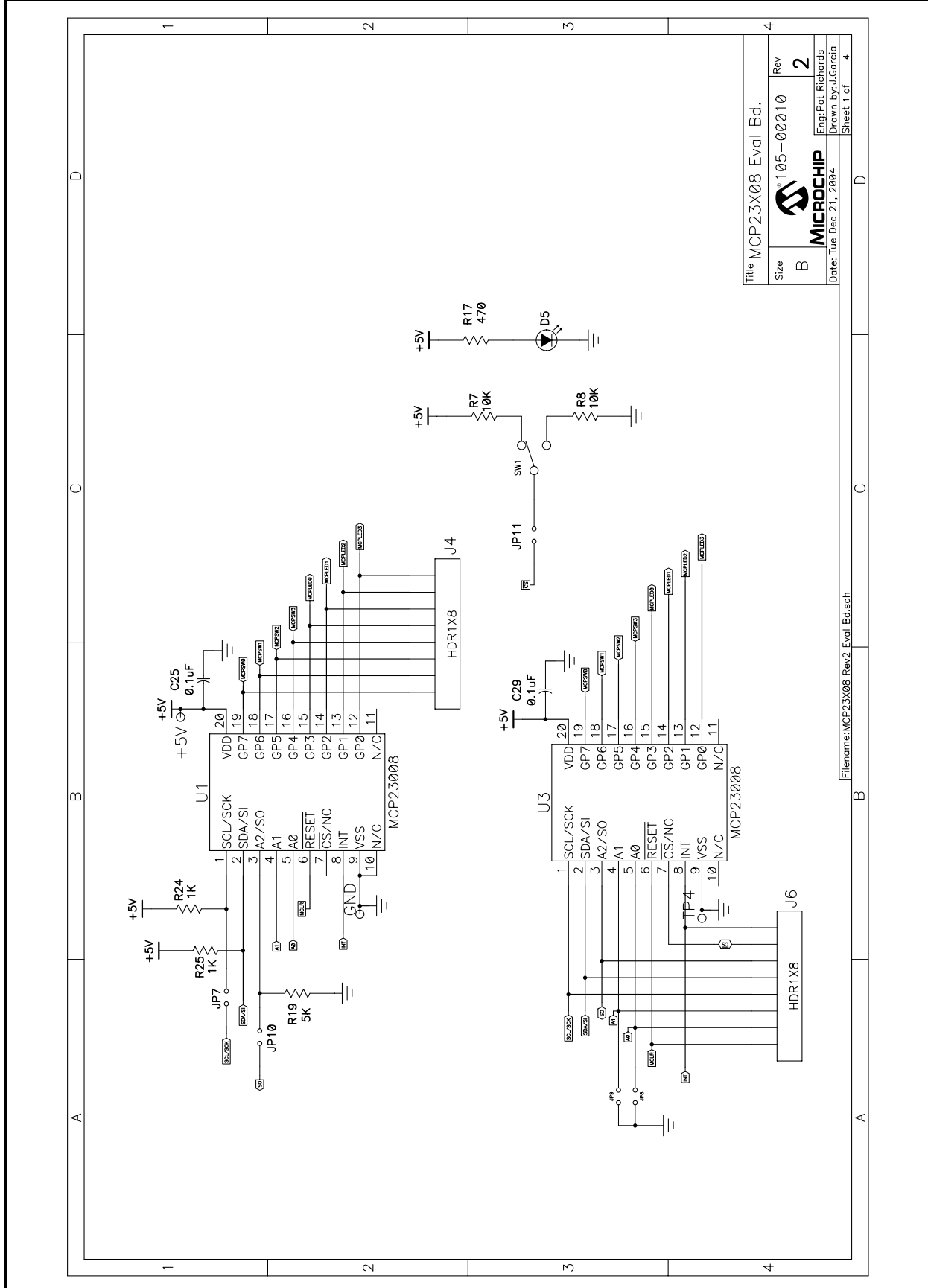
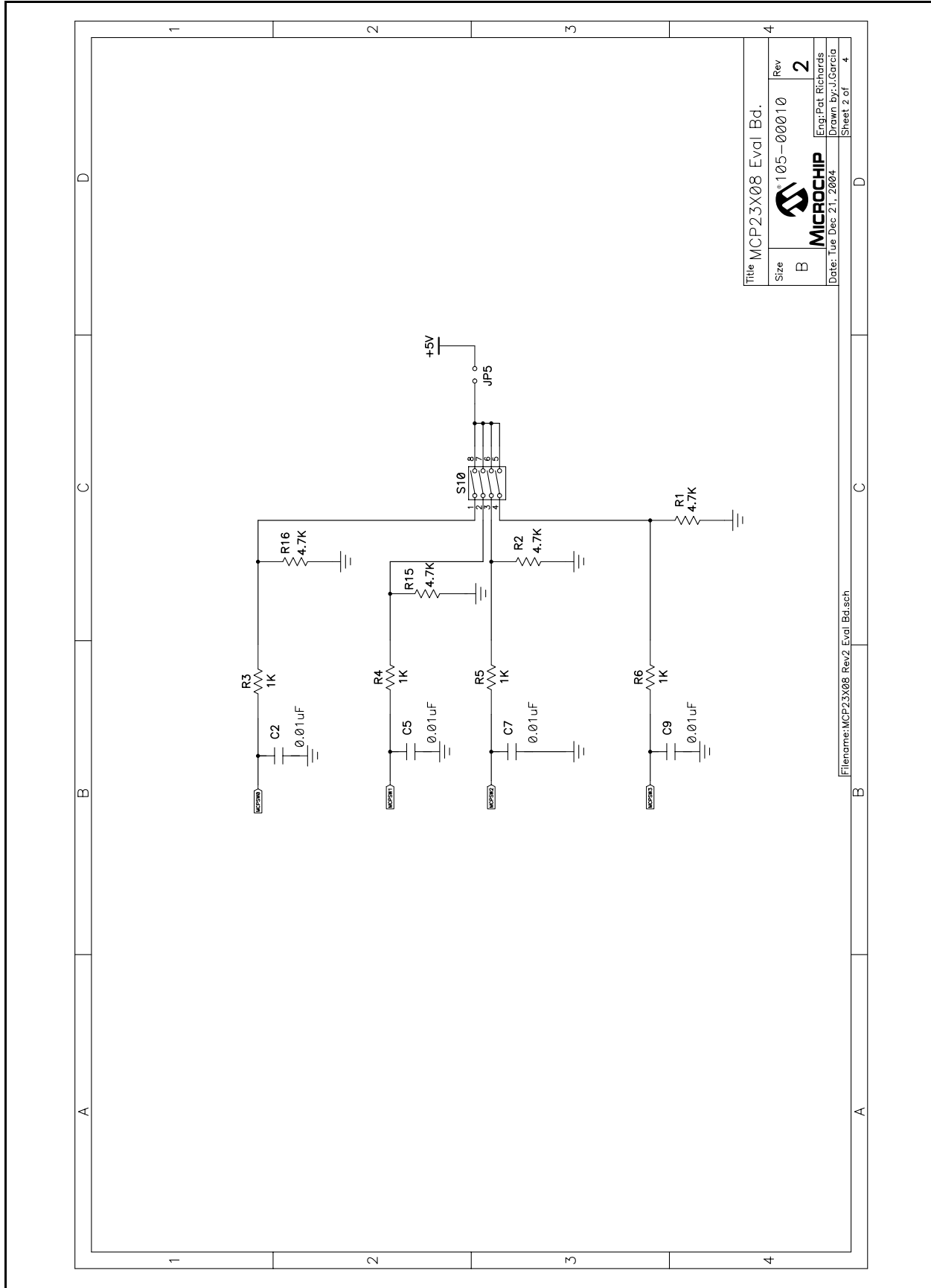




FIGURE A-2: BOARD SCHEMATIC (SHEET 2 OF 4)



# MCP23008/MCP23S08 Evaluation Board User's Guide

FIGURE A-3: BOARD SCHEMATIC (SHEET 3 OF 4)

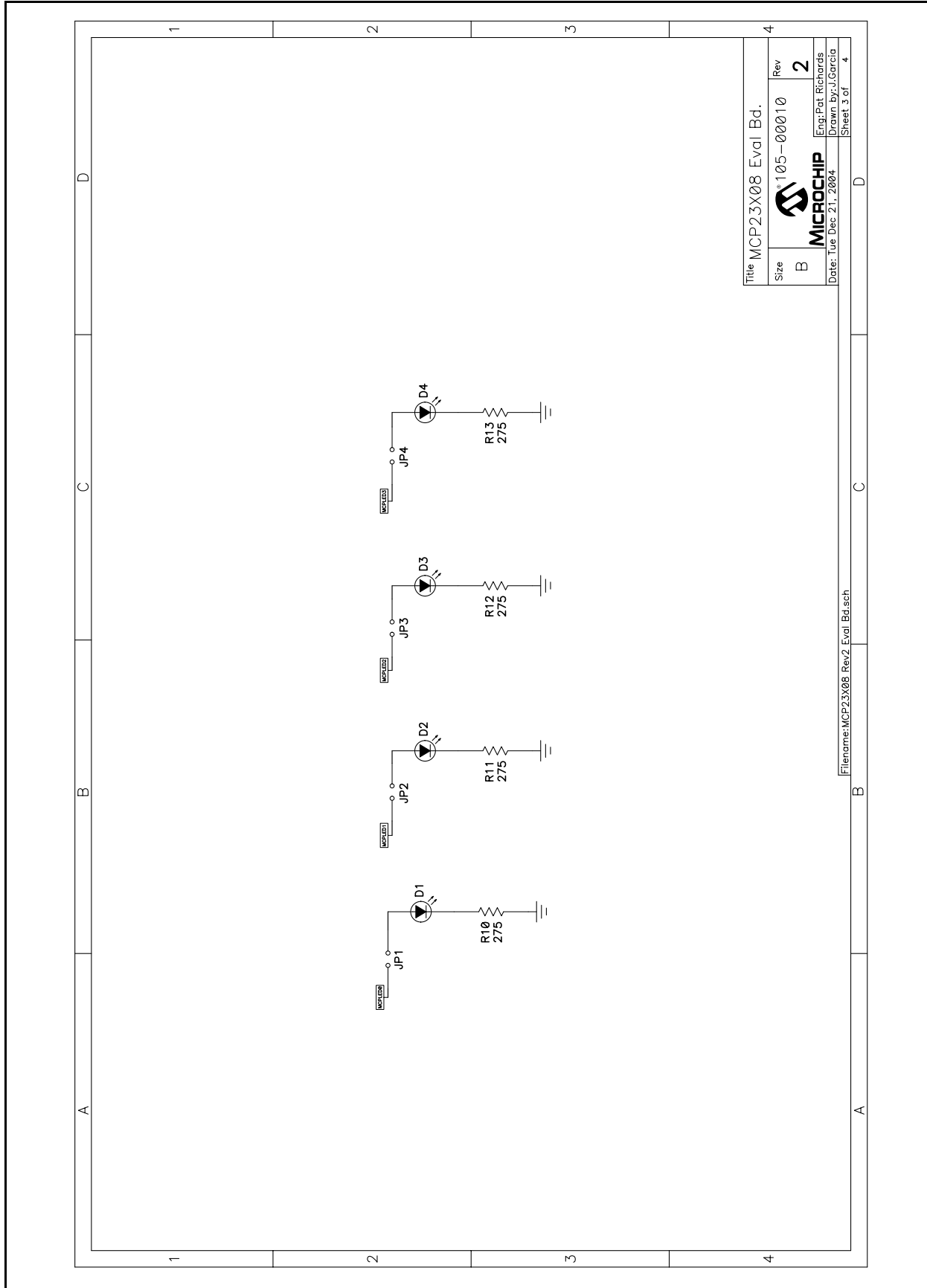
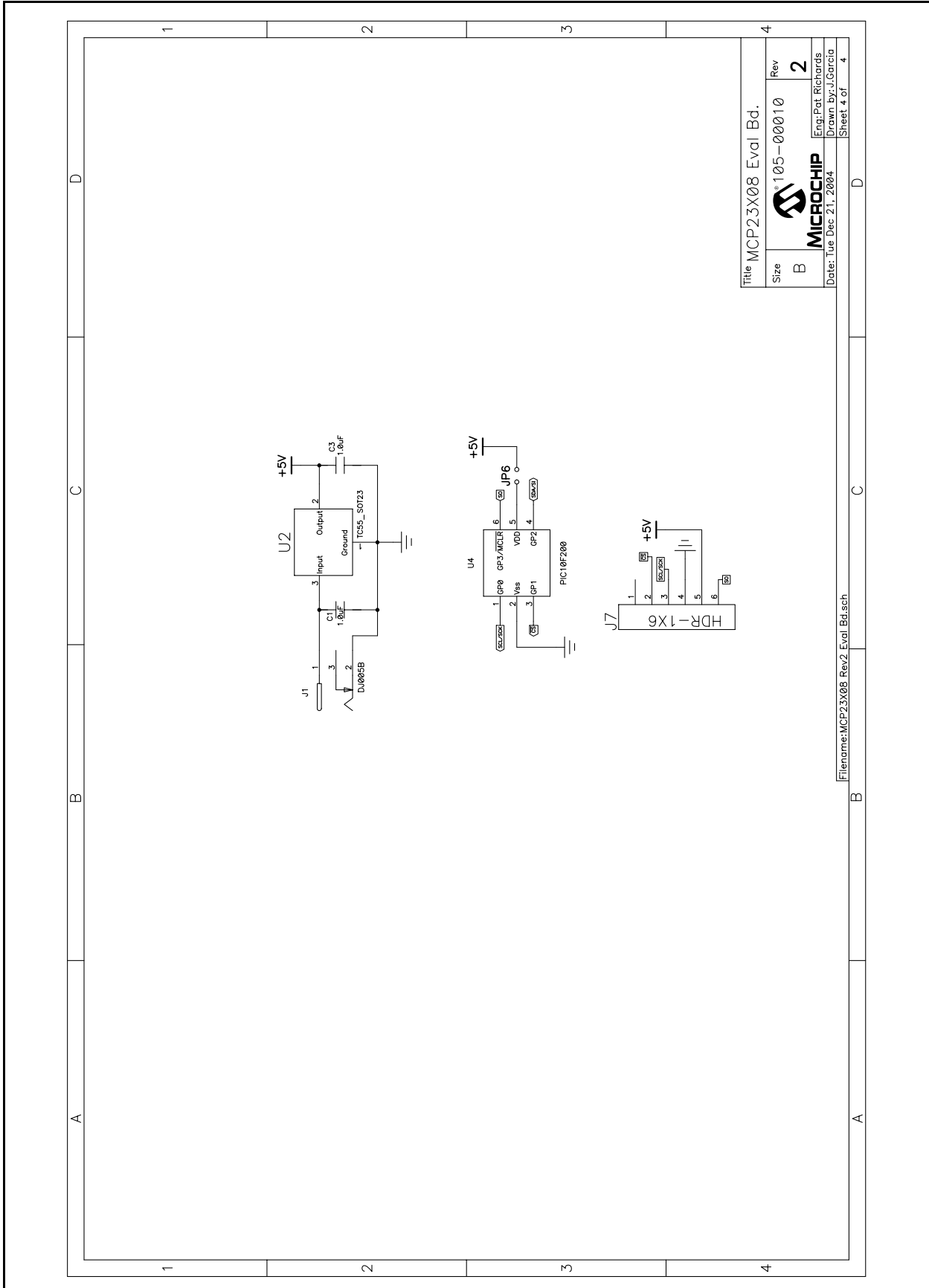


FIGURE A-4: BOARD SCHEMATIC (SHEET 4 OF 4)



# MCP23008/MCP23S08 Evaluation Board User's Guide

FIGURE A-5: BOARD - TOP LAYER (WITH SILK SCREEN ONLY)

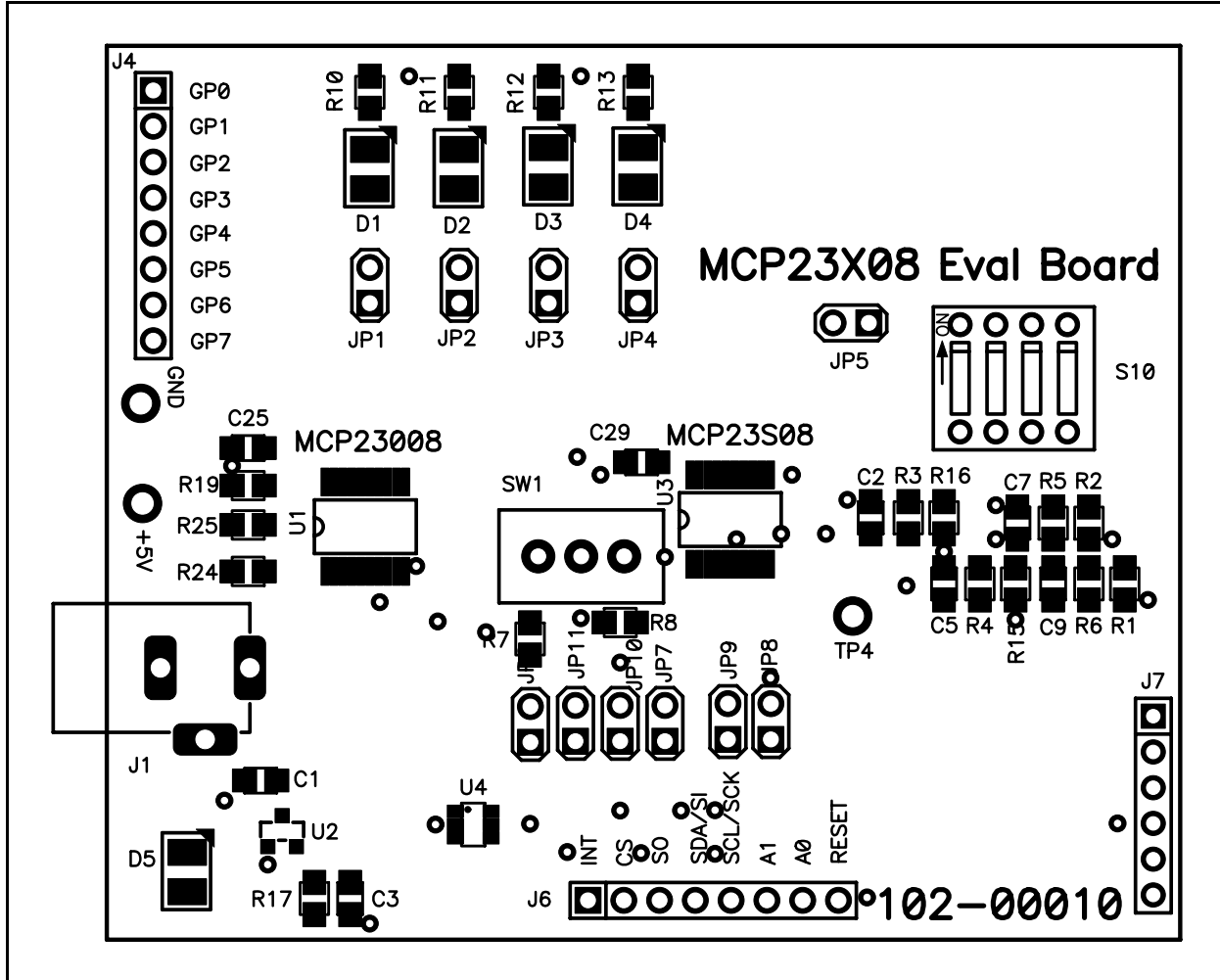
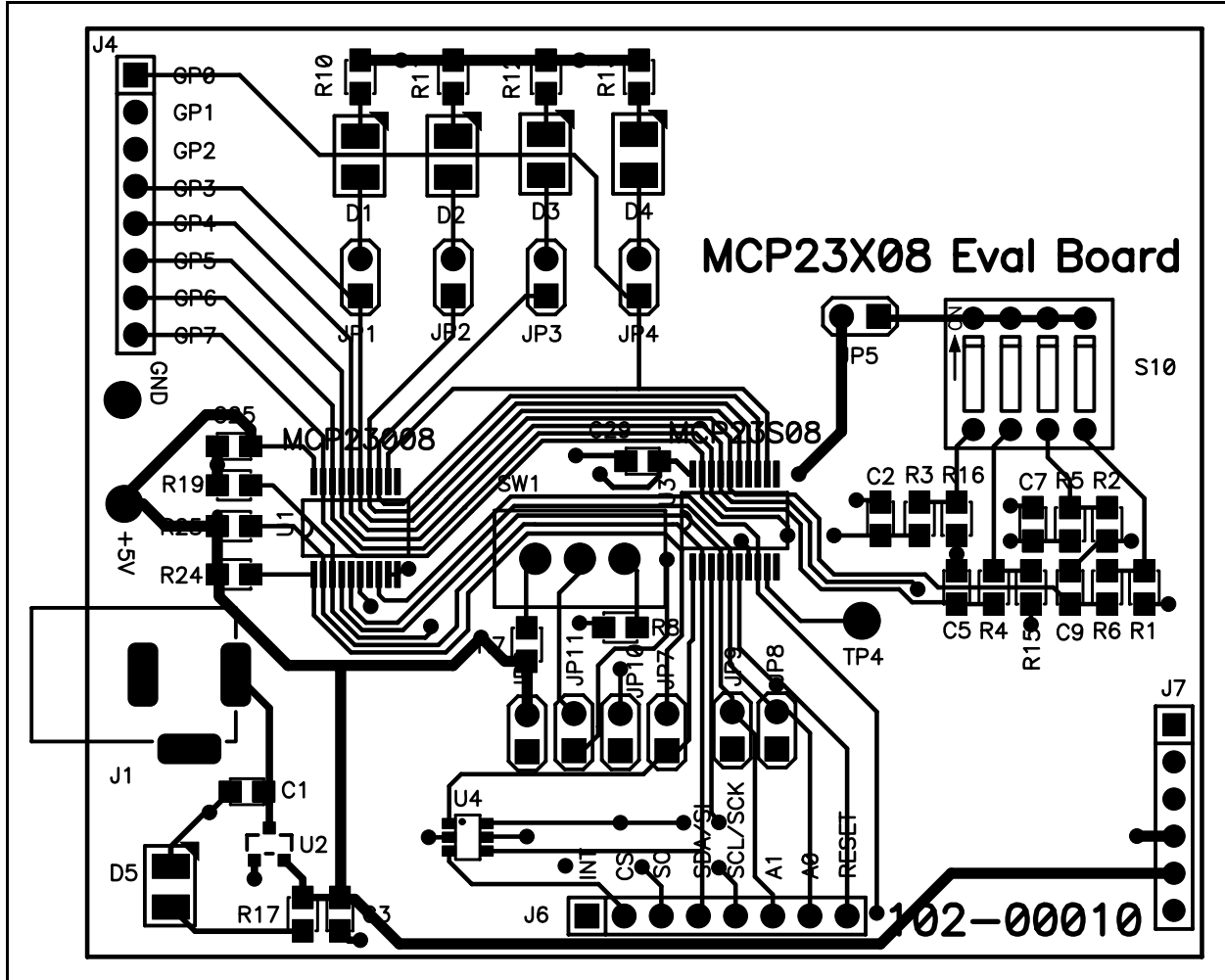
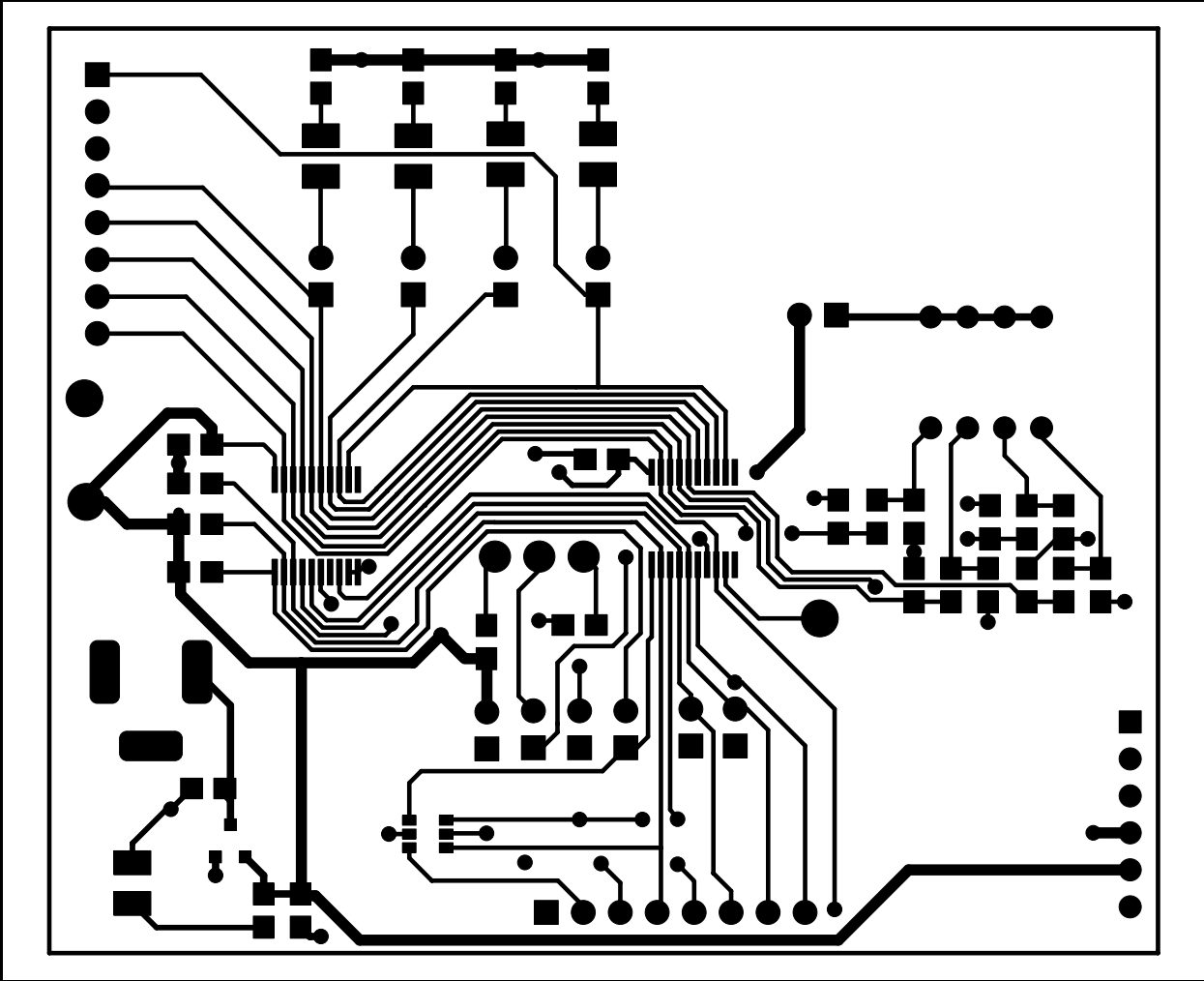


FIGURE A-6: BOARD - TOP LAYER



# MCP23008/MCP23S08 Evaluation Board User's Guide

FIGURE A-7: BOARD - BOTTOM LAYER





# MCP23008/MCP23S08 EVALUATION BOARD USER'S GUIDE

## Appendix B. Bill Of Materials (BOM)

**TABLE B-1: BILL OF MATERIALS (BOM)**

Qty	Reference	Description	Manufacturer	Part Number
2	C1,C3	Cap 1 $\mu$ F 16V CERAMIC Y5V 0805	Panasonic <sup>®</sup> - ECG	ECJ-2VF1C105Z
4	C2,C5,C7,C9	Cap 10000 PF 50V CERAMIC X7R 0805	KEMET <sup>®</sup>	C0805C103K5RACTU
2	C25,C29	Cap .1 $\mu$ F 16V CERAMIC X7R 0805	Panasonic - ECG	ECJ-2VB1C104K
4	D1-D4	LED, RED, 635NM PLCC 120DEG	Lite-On Trading USA, Inc.	LTST-T670EKT
1	D5	LED, GREEN, 565NM PLCC 120DEG	Lite-On Trading USA, Inc.	LTST-T670GKT
1	J1	Conn Power JACK 2.5MM PCB CIRC	CUI Inc	PJ-102B
2	J4,J6	Conn Header 8-POS .100 VERT TIN	Molex <sup>®</sup> /Waldom <sup>®</sup> Electronics Corp	22-28-4080
1	J7	Conn Header 6-POS .100 VERT TIN	Molex/Waldom Electronics Corp	22-28-4060
9	JP1 - JP9,JP11	Conn Header 2-POS .100VERTTIN NOT POPULATED	Molex/Waldom Electronics Corp	22-28-4020
1	JP10	Conn Header 2-POS .100 VERT TIN	Molex/Waldom Electronics Corp	22-28-4019
4	R1,R2,R15,R16	Res 4.75 k $\Omega$ , 1/10W, 1%, 0805 SMD	Panasonic - ECG	ERJ-6ENF4751V
6	R3,R4,R5,R6 R24,R25	Res 1.00 k $\Omega$ , 1/10W, 1%, 0805 SMD	Panasonic - ECG	ERJ-6ENF1001V
2	R7,R8	Res 10.0 k $\Omega$ , 1/10W, 1%, 0805 SMD	Panasonic - ECG	ERJ-6ENF1002V
4	R10,R11 R12,R13	Res 274 $\Omega$ , 1/10W, 1%, 0805 SMD	Panasonic - ECG	ERJ-6ENF2740V
1	R17	Res 475 $\Omega$ , 1/10W, 1%, 0805 SMD	Panasonic - ECG	ERJ-6ENF4750V
1	R19	Res 4.99 k $\Omega$ , 1/10W, 1%, 0805 SMD	Panasonic - ECG	ERJ-6ENF4991V
1	S2	Switch, SLD, MIN, SPDT, ON-ON, PCB MTG, 50VDC@.5A, SOLDER PINS		
1	S10	Switch, 4-POS DIP EXT ROCK UNSEALD	Grayhill Inc.	76SB04
2	GND,TP4	Test Point PC MULTI-PURPOSE BLK	Keystone Electronics <sup>®</sup>	5011
1	+5V	Test Point PC MULTI-PURPOSE RED	Keystone Electronics	5010
1	U1	8-Bit I/O Expander with I <sup>2</sup> C™ Interface	Microchip Technology Inc.	MCP23008-E/SS
1	U2	1 $\mu$ A Low Dropout Positive Voltage Regulator	Microchip Technology Inc.	TC55RP5002ECB713
1	U3	8-Bit I/O Expander with SPI™ Interface	Microchip Technology Inc.	MCP23S08-E/SS
1	U4	6-Pin, 8-Bit Flash Microcontroller	Microchip Technology Inc.	PIC10F202T-E/OTG

**Note 1:** The components listed in this Bill of Materials (BOM) are representative of the PCB assembly. The released BOM used in manufacturing uses all RoHS-compliant parts.

# MCP23008/MCP23S08 Evaluation Board User's Guide

---

NOTES:





# MCP23008/MCP23S08 EVALUATION BOARD USER'S GUIDE

---

---

## Appendix C. Firmware

---

---

### C.1 DEVICE FIRMWARE

For the latest version of the MCP23008/MCP23S08 Evaluation Board firmware, visit the Microchip web site @ [www.microchip.com](http://www.microchip.com).



**MICROCHIP**

---

---

## WORLDWIDE SALES AND SERVICE

---

---

### AMERICAS

#### Corporate Office

2355 West Chandler Blvd.  
Chandler, AZ 85224-6199  
Tel: 480-792-7200  
Fax: 480-792-7277  
Technical Support:  
<http://support.microchip.com>  
Web Address:  
[www.microchip.com](http://www.microchip.com)

#### Asia Pacific Office

Suites 3707-14, 37th Floor  
Tower 6, The Gateway  
Harbour City, Kowloon  
Hong Kong  
Tel: 852-2401-1200  
Fax: 852-2401-3431

#### Atlanta

Alpharetta, GA  
Tel: 770-640-0034  
Fax: 770-640-0307

#### Boston

Westborough, MA  
Tel: 774-760-0087  
Fax: 774-760-0088

#### Chicago

Itasca, IL  
Tel: 630-285-0071  
Fax: 630-285-0075

#### Dallas

Addison, TX  
Tel: 972-818-7423  
Fax: 972-818-2924

#### Detroit

Farmington Hills, MI  
Tel: 248-538-2250  
Fax: 248-538-2260

#### Kokomo

Kokomo, IN  
Tel: 765-864-8360  
Fax: 765-864-8387

#### Los Angeles

Mission Viejo, CA  
Tel: 949-462-9523  
Fax: 949-462-9608

#### San Jose

Mountain View, CA  
Tel: 650-215-1444  
Fax: 650-961-0286

#### Toronto

Mississauga, Ontario,  
Canada  
Tel: 905-673-0699  
Fax: 905-673-6509

### ASIA/PACIFIC

#### Australia - Sydney

Tel: 61-2-9868-6733  
Fax: 61-2-9868-6755

#### China - Beijing

Tel: 86-10-8528-2100  
Fax: 86-10-8528-2104

#### China - Chengdu

Tel: 86-28-8676-6200  
Fax: 86-28-8676-6599

#### China - Fuzhou

Tel: 86-591-8750-3506  
Fax: 86-591-8750-3521

#### China - Hong Kong SAR

Tel: 852-2401-1200  
Fax: 852-2401-3431

#### China - Qingdao

Tel: 86-532-8502-7355  
Fax: 86-532-8502-7205

#### China - Shanghai

Tel: 86-21-5407-5533  
Fax: 86-21-5407-5066

#### China - Shenyang

Tel: 86-24-2334-2829  
Fax: 86-24-2334-2393

#### China - Shenzhen

Tel: 86-755-8203-2660  
Fax: 86-755-8203-1760

#### China - Shunde

Tel: 86-757-2839-5507  
Fax: 86-757-2839-5571

#### China - Wuhan

Tel: 86-27-5980-5300  
Fax: 86-27-5980-5118

#### China - Xian

Tel: 86-29-8833-7250  
Fax: 86-29-8833-7256

### ASIA/PACIFIC

#### India - Bangalore

Tel: 91-80-4182-8400  
Fax: 91-80-4182-8422

#### India - New Delhi

Tel: 91-11-5160-8631  
Fax: 91-11-5160-8632

#### India - Pune

Tel: 91-20-2566-1512  
Fax: 91-20-2566-1513

#### Japan - Yokohama

Tel: 81-45-471- 6166  
Fax: 81-45-471-6122

#### Korea - Gumi

Tel: 82-54-473-4301  
Fax: 82-54-473-4302

#### Korea - Seoul

Tel: 82-2-554-7200  
Fax: 82-2-558-5932 or  
82-2-558-5934

#### Malaysia - Penang

Tel: 60-4-646-8870  
Fax: 60-4-646-5086

#### Philippines - Manila

Tel: 63-2-634-9065  
Fax: 63-2-634-9069

#### Singapore

Tel: 65-6334-8870  
Fax: 65-6334-8850

#### Taiwan - Hsin Chu

Tel: 886-3-572-9526  
Fax: 886-3-572-6459

#### Taiwan - Kaohsiung

Tel: 886-7-536-4818  
Fax: 886-7-536-4803

#### Taiwan - Taipei

Tel: 886-2-2500-6610  
Fax: 886-2-2508-0102

#### Thailand - Bangkok

Tel: 66-2-694-1351  
Fax: 66-2-694-1350

### EUROPE

#### Austria - Wels

Tel: 43-7242-2244-3910  
Fax: 43-7242-2244-393

#### Denmark - Copenhagen

Tel: 45-4450-2828  
Fax: 45-4485-2829

#### France - Paris

Tel: 33-1-69-53-63-20  
Fax: 33-1-69-30-90-79

#### Germany - Munich

Tel: 49-89-627-144-0  
Fax: 49-89-627-144-44

#### Italy - Milan

Tel: 39-0331-742611  
Fax: 39-0331-466781

#### Netherlands - Drunen

Tel: 31-416-690399  
Fax: 31-416-690340

#### Spain - Madrid

Tel: 34-91-708-08-90  
Fax: 34-91-708-08-91

#### UK - Wokingham

Tel: 44-118-921-5869  
Fax: 44-118-921-5820

06/08/06

## X-ON Electronics

Largest Supplier of Electrical and Electronic Components

*Click to view similar products for [Development Boards & Kits - ARM category](#):*

*Click to view products by [Microchip manufacturer](#):*

Other Similar products are found below :

[CWH-CTP-VSPA-YE](#) [CY4541](#) [EVAL-ADUCM320IQSPZ](#) [FRDM-KV31F](#) [POLYPOD-BGA324](#) [POLYPOD-TQ144](#) [POLYPOD-TQ176](#)  
[KEA128LEDLIGHTRD](#) [KIT\\_XMC42\\_EE1\\_001](#) [SAFETI-HSK-RM48](#) [LS1024A-RDB](#) [ADM00573](#) [FRDM-KL28Z](#) [PICOHOBBITFL](#)  
[MCIMX53-START-R](#) [TWR-K65F180M](#) [KEA128BLDCRD](#) [CC-ACC-MMK-2443](#) [STM8L1528-EVAL](#) [YSPKS5D9E10](#) [YGRPEACHFULL](#)  
[TWR-MC-FRDMKE02Z](#) [TWR-K80F150M](#) [CY14NVS RAMKIT-001](#) [EVALSPEAR320CPU](#) [EVB-SCMIMX6SX](#) [MAXWSNENV#](#) [FM0-64L-S6E1C3](#) [MAX32600-KIT#](#) [TMDX570LS04HDK](#) [Z32F3840100KITG](#) [LS1021A-IOT-B](#) [SK-FM3-100PMC-MB9BF516N](#) [TXSD-SV70](#)  
[YSTBS3A3E10](#) [YR8A77430HA02BG](#) [STM3240G-USB/NMF](#) [OM13080UL](#) [EVAL-ADUC7120QSPZ](#) [CYDP-KIT-13638](#) [OM13063UL](#)  
[ATAVRPARROT](#) [OM13090UL](#) [YSPEHMI1S20](#) [TXSD-SV71](#) [YGRPEACHNORMAL](#) [SK-FM3-176PMC-ETHERNET](#) [HVP-KV11Z75M](#)  
[OM13076UL](#) [LX2RDBKIT2-25G](#)