

**NOT RECOMMENDED FOR NEW DESIGNS
USE KBP2005G-BP~KBP210G-BP Series**



Micro Commercial Components

Micro Commercial Components
20736 Marilla Street Chatsworth
CA 91311
Phone: (818) 701-4933
Fax: (818) 701-4939

Features

- UL Recognized File # E165989
- # Glass Passivated Die Construction
- # Ideal for Printed Circuit Boards
- # Case Material: Molded Plastic. UL Flammability Classification Rating 94V-0 and MSL rating1
- Lead Free Finish/RoHS Compliant (Note1)("P" Suffix designates Compliant. See ordering information)

Maximum Ratings

- # Thermal Resistance: Junction to case: 10°C/W typical
- # Operating Temperature: -55°C to +150°C
- # Storage Temperature: -55°C to +150°C

| MCC Part Number | Maximum Recurrent Peak Reverse Voltage | Maximum RMS Voltage | Maximum DC Blocking Voltage |
|-----------------|--|---------------------|-----------------------------|
| KBP2005 | 50V | 35V | 50V |
| KBP201 | 100V | 70V | 100V |
| KBP202 | 200V | 140V | 200V |
| KBP204 | 400V | 280V | 400V |
| KBP206 | 600V | 420V | 600V |
| KBP208 | 800V | 560V | 800V |
| KBP210 | 1000V | 700V | 1000V |

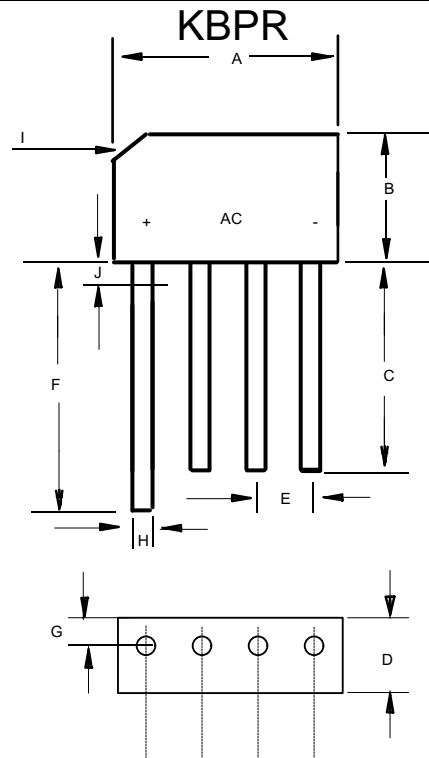
Electrical Characteristics @ 25°C Unless Otherwise Specified

| | | | |
|---|-------------|--------------------|---|
| Average Forward Current | $I_{F(AV)}$ | 2.0A | $T_c = 105^\circ\text{C}$ |
| Peak Forward Surge Current | I_{FSM} | 60A | 8.3ms, half sine |
| Maximum Forward Voltage Drop Per Element | V_F | 1.1V | $I_F = 2.0\text{A}$ per element |
| Maximum DC Reverse Current At Rated DC Blocking Voltage | I_R | 5 μ A 0.5mA | $T_a = 25^\circ\text{C}$ $T_a = 125^\circ\text{C}$ |
| Typical Junction Capacitance Per Element | C_J | 25pF | 4V Reverse DC 1MHZ |

Note: 1. High Temperature Solder Exemption Applied, see EU Directive Annex 7.

**KBP2005
THRU
KBP210**

**2.0 Amp Glass
Passivated Bridge
Rectifier
50 to 1000 Volts**



| DIM | INCHES | | MM | | NOTE |
|-----|---------|------|--------|-------|------|
| | MIN | MAX | MIN | MAX | |
| A | .560 | .600 | 14.32 | 15.24 | |
| B | .420 | .460 | 10.70 | 11.70 | |
| C | .500 | --- | 12.70 | 15.50 | |
| D | .132 | .144 | 3.35 | 3.65 | |
| E | .140 | .160 | 3.60 | 4.10 | |
| F | .600 | --- | 15.24 | 19.00 | |
| G | .035 | .047 | 0.90 | 1.20 | |
| H | .028 | .034 | 0.70 | 0.90 | |
| I | 0.12X45 | | 3.0X45 | | |
| J | .0385 | .041 | 0.98 | 1.05 | |

FIG. 1 - DERATING CURVE OUTPUT RECTIFIED CURRENT

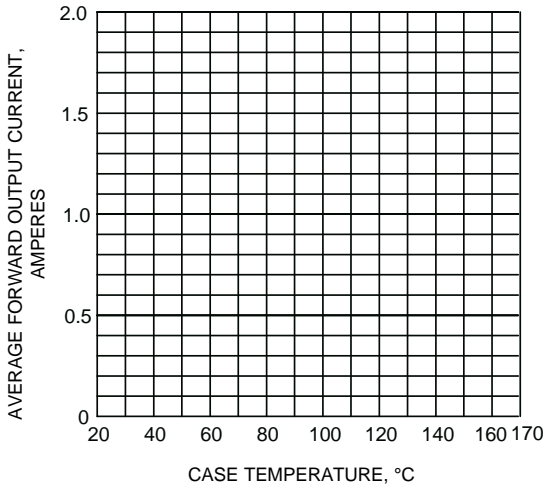


FIG. 2 - MAXIMUM NON-REPETITIVE PEAK FORWARD SURGE CURRENT PER LEG

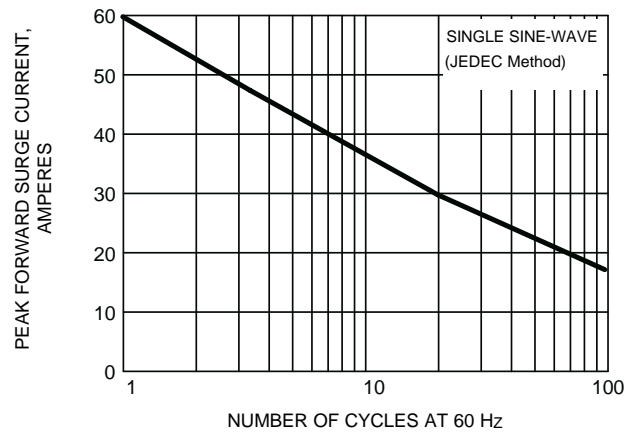


FIG. 3 - TYPICAL FORWARD CHARACTERISTICS PER LEG

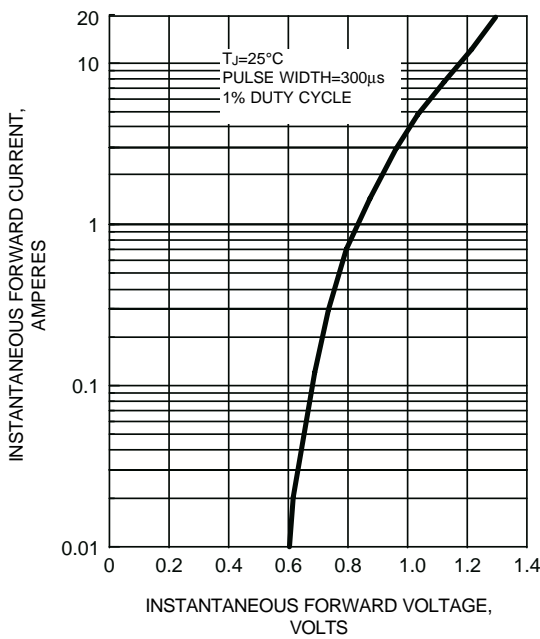


FIG. 4 - TYPICAL REVERSE LEAKAGE CHARACTERISTICS PER LEG

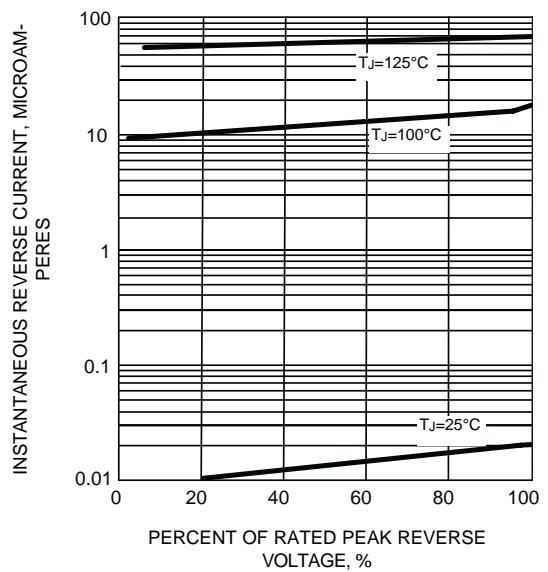
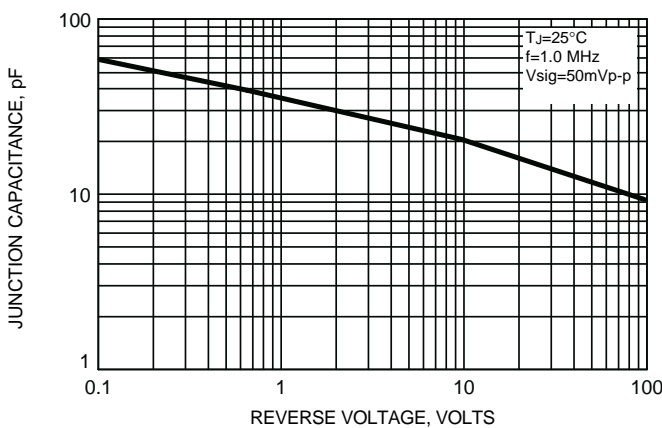


FIG. 5 - TYPICAL JUNCTION CAPACITANCE PER LEG





Micro Commercial Components

Ordering Information :

| Device | Packing |
|----------------|--------------------|
| Part Number-BP | Bulk: 4Kpcs/Carton |

*****IMPORTANT NOTICE*****

Micro Commercial Components Corp. reserves the right to make changes without further notice to any product herein to make corrections, modifications , enhancements , improvements , or other changes . **Micro Commercial Components Corp .** does not assume any liability arising out of the application or use of any product described herein; neither does it convey any license under its patent rights ,nor the rights of others . The user of products in such applications shall assume all risks of such use and will agree to hold **Micro Commercial Components Corp .** and all the companies whose products are represented on our website, harmless against all damages.

*****LIFE SUPPORT*****

MCC's products are not authorized for use as critical components in life support devices or systems without the express written approval of Micro Commercial Components Corporation.

*****CUSTOMER AWARENESS*****

Counterfeiting of semiconductor parts is a growing problem in the industry. Micro Commercial Components (MCC) is taking strong measures to protect ourselves and our customers from the proliferation of counterfeit parts. MCC strongly encourages customers to purchase MCC parts either directly from MCC or from Authorized MCC Distributors who are listed by country on our web page cited below. Products customers buy either from MCC directly or from Authorized MCC Distributors are genuine parts, have full traceability, meet MCC's quality standards for handling and storage. **MCC will not provide any warranty coverage or other assistance for parts bought from Unauthorized Sources.** MCC is committed to combat this global problem and encourage our customers to do their part in stopping this practice by buying direct or from authorized distributors.

www.mccsemi.com

X-ON Electronics

Largest Supplier of Electrical and Electronic Components

Click to view similar products for [Bridge Rectifiers](#) category:

Click to view products by [Micro Commercial Components \(MCC\)](#) manufacturer:

Other Similar products are found below :

[MB2510](#) [MB252](#) [MB356G](#) [MB358G](#) [GBJ1504-BP](#) [GBU15J-BP](#) [GBU15K-BP](#) [GBU4A-BP](#) [GBU6B-E3/45](#) [GSIB680-E3/45](#) [DB101-BP](#)
[DF01](#) [DF10SA-E345](#) [BU1508-E3/45](#) [KBPC50-10S](#) [RS405GL-BP](#) [G5SBA60-E3/51](#) [GBU10J-BP](#) [GBU6M](#) [GBU8D-BP](#) [GBU8J-BP](#)
[2KBB10](#) [36MB140A](#) [TB102M](#) [MB1510](#) [MB258](#) [MB6M-G](#) [MB86](#) [TL401G](#) [MDA920A2](#) [TU602](#) [TU810](#) [MP501W-BP](#) [MP502-BP](#)
[BR101-BP](#) [BR84DTP204](#) [BU2008-E3/51](#) [KBPC10/15/2501WP](#) [KBPC25-02](#) [VS-2KBB60](#) [DF06SA-E345](#) [DF1510S](#) [VS-40MT160PAPBF](#)
[W02M](#) [GBL02-E3/45](#) [GBU4G-BP](#) [GBJ2506-BP](#) [GBU6B-E3/51](#) [GSIB15A80-E3/45](#) [DB104-BP](#)