

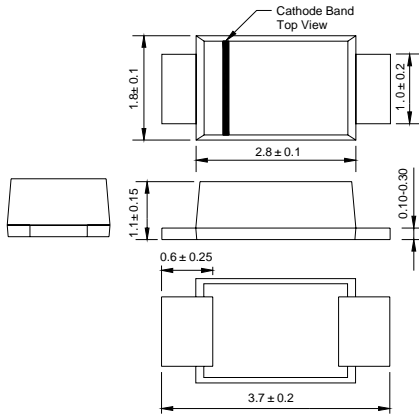


SODDB3

BIDIRECTIONAL TRIGGER DIODE

Reverse Voltage - 32 Volts Power: 150mW

SOD-123FL



FEATURES

- ◆ Small glass structure ensures high reliability
- ◆ VBO:28-36V version
- ◆ Low breakover current
- ◆ High temperature soldering guaranteed
250°C/10 seconds, 0.375" (9.5mm) lead length,
5 lbs. (2.3kg) tension

MECHANICAL DATA

Case: JEDEC SOD-123FL molded plastic body
Terminals: Solderable per MIL-STD-750, Method 2026
Mounting Position: Any
Weight: 0.0007 ounce, 0.02gram
Marking : DB3

MAXIMUM RATINGS AND CHARACTERISTICS

Ratings at 25°C ambient temperature unless otherwise specified.

	TEST CONDITION	SYMBOLS	VALUE			UNITS
			Min.	Typ.	Max.	
Breakover voltage *	C=22nF **	V _{BO}	28	32	36	VOLTS
Breakover voltage symmetry	C=22nF **	+V _{BO1} -I-V _{BO}	-3		3	VOLTS
Dynamic breakover voltage *	(NOTE 1)	ΔV ± I	5			VOLTS
Output voltage *	DIAGRAM2	V _O	5			VOLTS
Breakover current *	C=22nF **	I _{BO}			100	μA
Rise time *	DIAGRAM3	tr		1.5		μS
Leakage current *	V _R =0.5V _{BO}	I _B			10	μA
Power dissipation on printed circuit	T _A =65°C	P _d			150	mW
Repetitive peak on-state current	tp=20μs f=100HZ	I _{TRM}			2	A
Thermal Resistances from Junction to ambient		R _{θJA}			400	°C/W
Thermal Resistances from Junction to lead		R _{θJL}			150	
Operating junction and storage temperature range		T _J , T _{STG}	-40		125	°C

* :Electrical characteristic appoicaboe in forward and reverse directions.

** :Connected in parallel with the devices.

Note 1:I_{BO} from I_{BO} to 10mA



RATINGS AND CHARACTERISTIC CURVES SODDB3

DIAGRAM 1: CURRENT-VOLTAGE CHARACTERISTICS

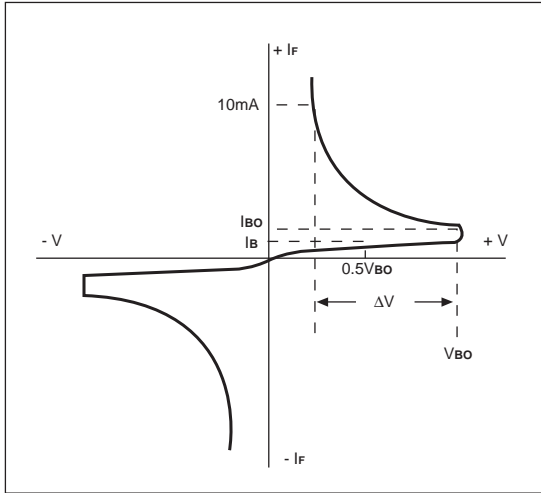


DIAGRAM 2: TEST CIRCUIT OUTPUT VOLTAGE

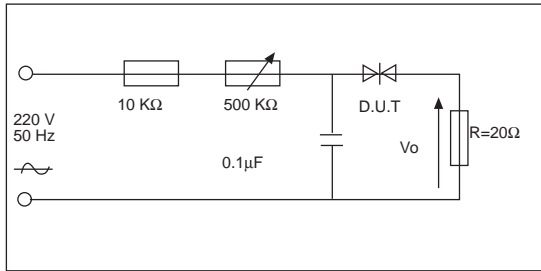


DIAGRAM 3: TEST CIRCUIT SEE DIAGRAM 2. ADJUST R FOR $I_p=0.5A$

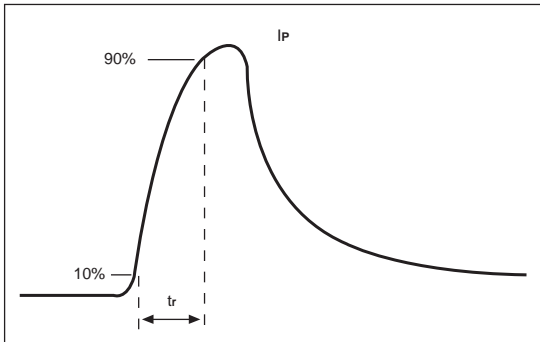


FIG. 1-POWER DISSIPATION VERSUS AMBIENT TEMPERATURE(MAXIMUM VALUES)

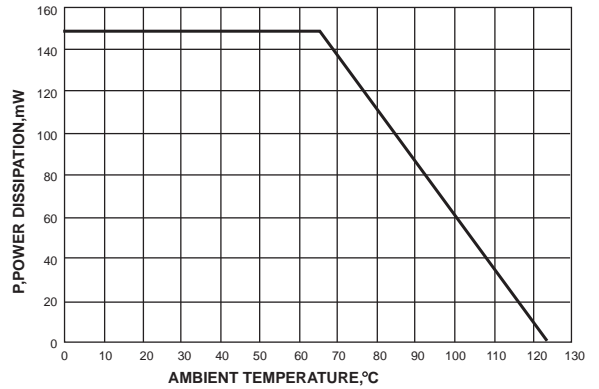


FIG. 2-PEAK PULSE CURRENT VERSUS PULSE DURATION (MAXIMUM VALUES)

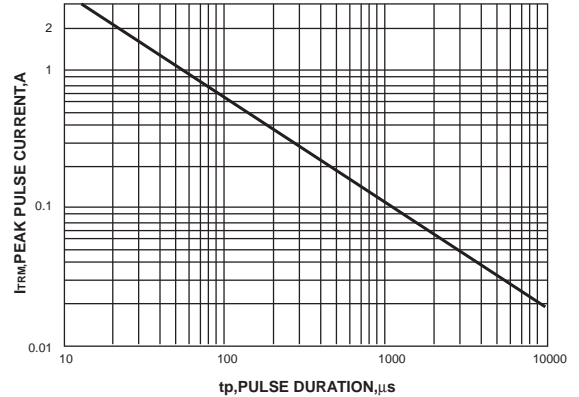
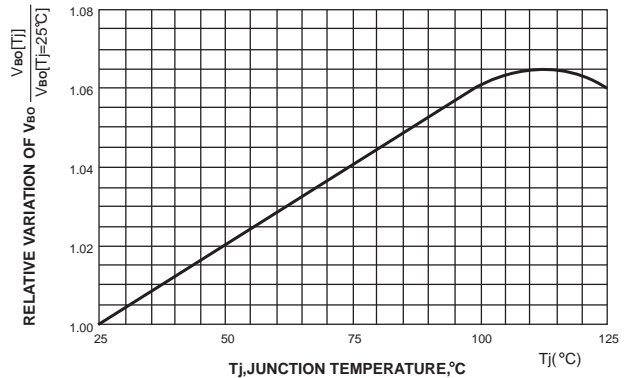


FIG. 3-RELATIVE VARIATION OF V_{Bo} VERSUS JUNCTION TEMPERATURE(TYPICAL VALUES)



The cruve graph is for reference only, can't be the basis for judgment(曲线图仅供参考)!



X-ON Electronics

Largest Supplier of Electrical and Electronic Components

Click to view similar products for [Diacs](#) category:

Click to view products by [Microdiode Electronics](#) manufacturer:

Other Similar products are found below :

[DLDB3](#) [DB3](#) [NTE6407](#) [DB3TG](#) [DB3](#) [DB4](#) [DB4](#) [NTE6412](#) [DB3-22](#) [LLDB3](#) [DB4](#) [NTE6408](#) [NTE6411](#) [BEP0080SB](#) [BEP0300SC](#)
[BEP3500SB](#) [BR100-03LLD](#) [BR100-04LLD](#) [2SC2983](#) [DB6](#) [DC34](#) [DB3](#) [DB3](#) [DB3W](#) [LLDB3](#) [LLDB3](#) [DB3](#) [K150SAW](#) [K150](#) [SODDB3](#)
[DB3](#) [DB4](#) [SMDB3](#) [TMMDB3](#) [TMMDB3TG](#) [SODDB3T](#) [RHG](#)