



TT8KF THRU TT8MF

Voltage Range - 800 to 1000 Volts Current - 8.0 Ampere

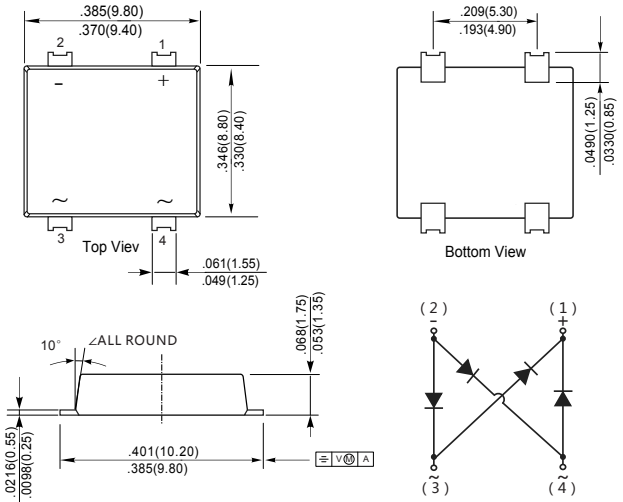
8A SURFACE MOUNT BRIDGE RECTIFIERS

Features

- ◆ Reverse Voltage - 800 to 1000 V
- ◆ Forward Current- 8.0 A
- ◆ High Surge Current Capability
- ◆ Designed for Surface Mount Application

TTF

ROHS
COMPLIANT



Dimensions in inches and (millimeters)

Mechanical Data

Case: JEDEC TTF molded plastic body
 Terminals: Solderable per MIL-STD-750, Method 2026A
 Polarity: Polarity symbol marking on body Mounting
 Position: Any
 Weight : 0.0163 ounce, 0.461 grams

Maximum Ratings And Electrical Characteristics

Ratings at 25°C ambient temperature unless otherwise specified.
 Single phase half-wave 60Hz, resistive or inductive load, for capacitive load current derate by 20%.

Parameter	Symbols	TT8KF	TT8MF	Units
Marking Code		MDD TT8KF	MDD TT8MF	
Maximum Repetitive Peak Reverse Voltage	V_{RRM}	800	1000	V
Maximum RMS voltage	V_{RMS}	560	700	V
Maximum DC Blocking Voltage	V_{DC}	800	1000	V
Maximum Average Forward Rectified Current	I_o	8		A
Peak Forward Surge Current 8.3 ms Single Half Sine Wave Superimposed on Rated Load (JEDEC Method)	I_{FSM}	220		A
Peak Forward Surge Current 1.0ms Single Half Sine-wave Superimposed on Rated Load	I_{FSM}	350		A
I^2t Rating for Fusing $1ms \leq t < 8.3ms$	I^2t	200		A ² S
Maximum Forward Voltage at 1.0 A	V_F	0.83 typ.		V
Maximum Forward Voltage at 4.0 A	V_F	1.0		V
Maximum DC Reverse Current @ $T_a=25^\circ C$ at Rated DC Blocking Voltage @ $T_a=125^\circ C$	I_R	5 100		μA
Typical Junction Capacitance (Note1)	C_j	100		pF
Typical Thermal Resistance (Note2)	$R_{\theta JA}$ $R_{\theta JC}$ $R_{\theta JL}$	60 10 12		$^\circ C/W$
Operating and Storage Temperature Range	T_j, T_{stg}	-55 ~ +150		$^\circ C$

Note: 1. Measured at 1MHz and applied reverse voltage of 4 V D.C.
 2. P.C.B. mounted with 4x1.5"x1.5" (3.81x3.81 cm) copper pad areas.



TT8KF THRU TT8MF

Voltage Range - 800 to 1000 Volts Current - 8.0 Ampere

Typical Characteristics

Fig.1 Average Rectified Output Current Derating Curve

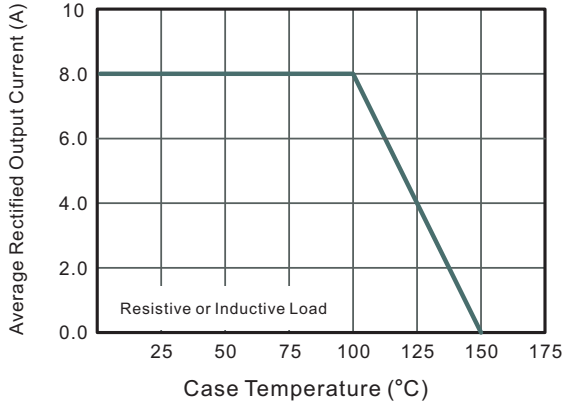


Fig.2 Typical Reverse Characteristics

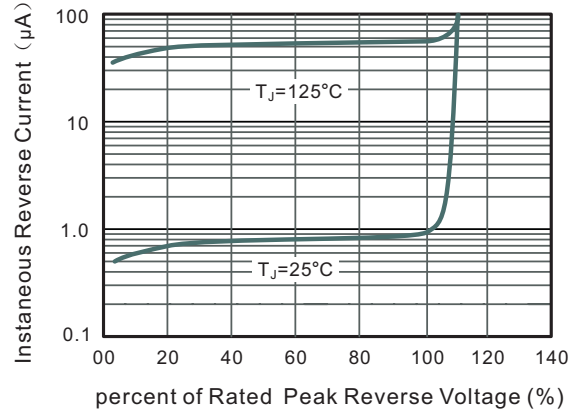


Fig.3 Typical Instantaneous Forward Characteristics

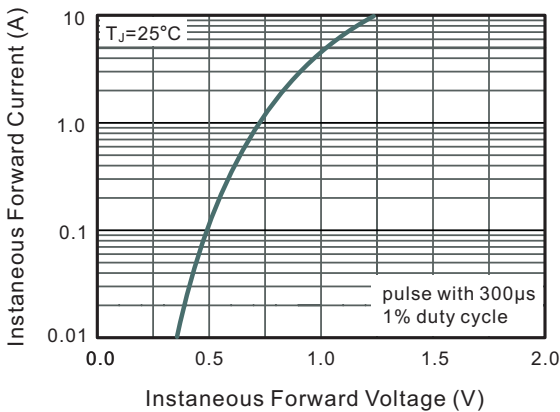


Fig.4 Typical Junction Capacitance

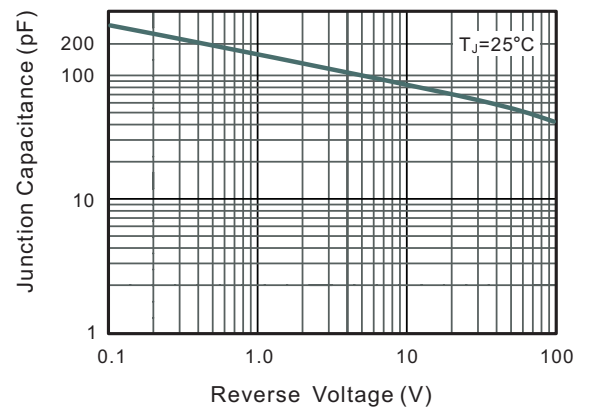


Fig.5 Maximum Non-Repetitive Peak Forward Surge Current

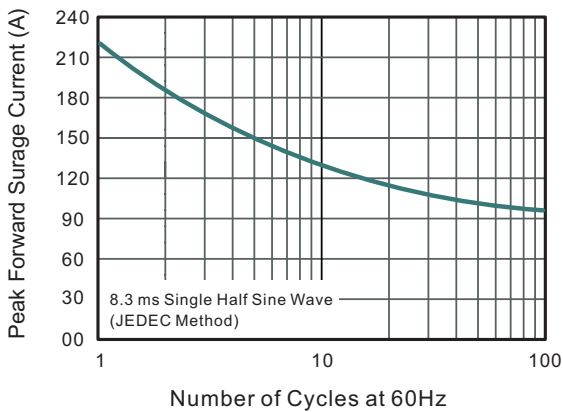
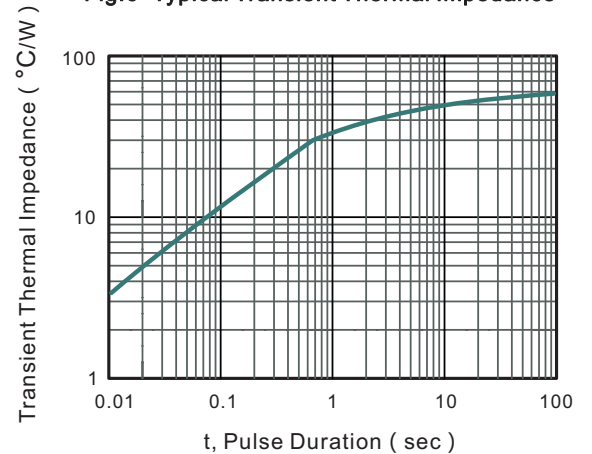


Fig.6 Typical Transient Thermal Impedance



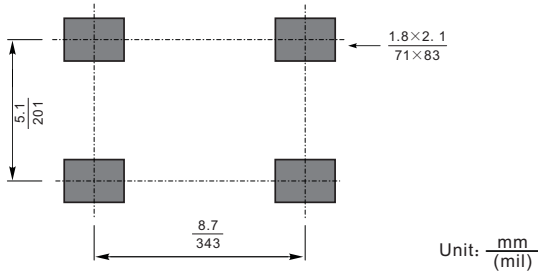
The curve above is for reference only.



TT8KF THRU TT8MF

Voltage Range - 800 to 1000 Volts Current - 8.0 Ampere

Suggested Pad Layout



Note:

1. Controlling dimension: in/millimeters.
2. General tolerance: ± 0.05 mm.
3. The pad layout is for reference purposes only.

Important Notice and Disclaimer

Microdiode Electronics (Jiangsu) reserves the right to make changes to this document and its products and specifications at any time without notice. Customers should obtain and confirm the latest product information and specifications before final design, purchase or use.

Microdiode Electronics (Jiangsu) makes no warranty, representation or guarantee regarding the suitability of its products for any particular purpose, nor does Microdiode Electronics (Jiangsu) assume any liability for application assistance or customer product design. Microdiode Electronics (Jiangsu) does not warrant or accept any liability with products which are purchased or used for any unintended or unauthorized application.

No license is granted by implication or otherwise under any intellectual property rights of Microdiode Electronics (Jiangsu).

Microdiode Electronics (Jiangsu) products are not authorized for use as critical components in life support devices or systems without express written approval of Microdiode Electronics (Jiangsu).

X-ON Electronics

Largest Supplier of Electrical and Electronic Components

Click to view similar products for [Bridge Rectifiers](#) category:

Click to view products by [Microdiode Electronics](#) manufacturer:

Other Similar products are found below :

[G3SBA60-E351](#) [GBJ1504-BP](#) [GBU10B-BP](#) [GBU15J-BP](#) [GBU15K-BP](#) [GBU4A-BP](#) [GBU4D-BP](#) [GBU6B-E3/45](#) [GSIB680-E3/45](#) [DB101-BP](#) [DF10SA-E345](#) [RMB2S](#) [RCG](#) [APT30DF100HJ](#) [APT60DF20HJ](#) [B2S-E3/80](#) [BU1506-E351](#) [BU15085S-E345](#) [BU1508-E3/45](#) [BU1510-E3/45](#) [RS404GL-BP](#) [RS405GL-BP](#) [G3SBA20-E3/51](#) [G5SBA20-E3/51](#) [G5SBA60-E3/51](#) [GBJ1502-BP](#) [GBL02-E351](#) [GBL10-E3/45](#) [GBU10J-BP](#) [GBU4J-BP](#) [GBU4K-BP](#) [GBU8B-E3/45](#) [GBU8D-BP](#) [GBU8J-BP](#) [GSIB1520-E3/45](#) [MB1510](#) [MB352W](#) [MB6M-G](#) [B2M-E345](#) [B40C7000A](#) [B500C7000A](#) [MP5010W-BP](#) [MP501W-BP](#) [MP502-BP](#) [BR1005-BP](#) [BR101-BP](#) [BU1006-E345](#) [BU1010A-E3/51](#) [BU12065S-E3/45](#) [BU1508-E3/51](#) [BU2006-E3/45](#)