

High Efficiency, synchronous PFM step-up DC-DC converter

General Description

ME2188 Series is a PFM Step-up DC/DC converter IC with low supply current by CMOS process. High frequency noise that occurs during switching is reduced by using advanced circuit designed, output voltage is programmable in 0.1V steps between 1.9V~5.0V and maximum frequency is 320KHz(TYP.). A low ripple, high efficiency step-up DC/DC converter can be constructed of ME2188 with only two external components. ME2188 is suitable for use with battery-powered instruments with low noise and low supply current.

Features

- High efficiency: 93%
- Maximum frequency: 320KHz
- Low Quiescent Current: 7.5 μ A
- Input Voltage: 0.9V ~ 5.0V
- Output Voltage Range: 1.9V ~ 5.0V
- High Accuracy: \pm 2%
- Low ripple and Low noise

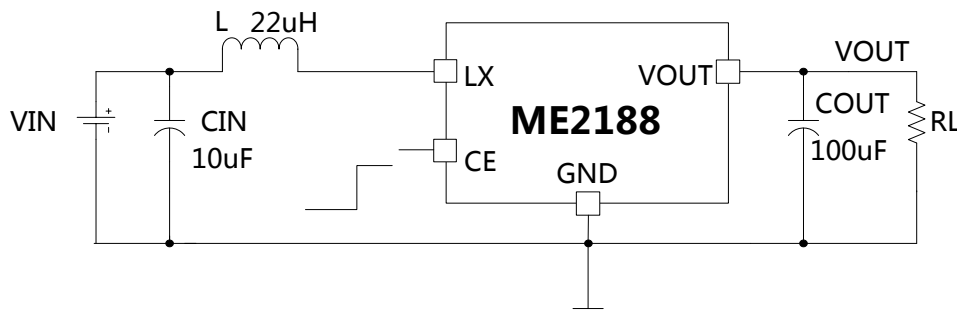
Typical Application

- Power source for battery-powered equipment
- Power source for Wireless mouse, toys, Cameras, VCRs, PDAs, MP3, and Led lighting etc

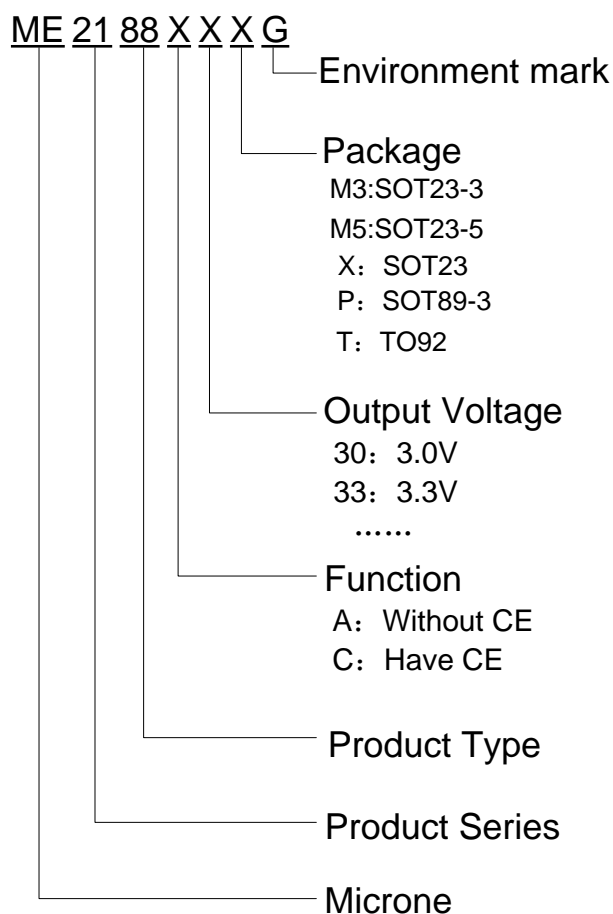
Package

- 5-pin SOT23-5
- 3-pin SOT23、SOT23-3、SOT89-3、TO92

Typical Application Circuit



Selection Guide

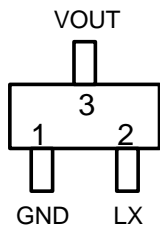


product series	product description
ME2188A22M3G	V _{OUT} =2.2V, Without CE pin, Package: SOT23-3
ME2188A22TG	V _{OUT} =2.2V, Without CE pin, Package : TO-92
ME2188A22XG	V _{OUT} =2.2V, Without CE pin, Package : SOT23
ME2188A24TG	V _{OUT} =2.4V, Without CE pin, Package : TO-92
ME2188A33M3G	V _{OUT} =3.3V, Without CE pin, Package: SOT23-3
ME2188A33XG	V _{OUT} =3.3V, Without CE pin, Package : SOT23
ME2188A33PG	V _{OUT} =3.3V, Without CE pin, Package : SOT89-3
ME2188A33TG	V _{OUT} =3.3V, Without CE pin, Package : TO-92
ME2188C33M5G	V _{OUT} =3.3V, Have CE pin, Package : SOT23-5

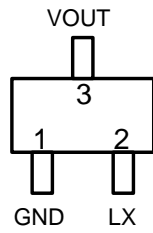
NOTE: At present ,there are thirteen kinds of voltage value: 2.2V、2.3V、2.4V、2.5V、2.7V、2.8V、3.0V、3.3V、3.6V、3.7V、4.0、4.5V、5.0V。

If you need other voltage and package, please contact our sales staff.

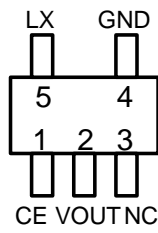
Pin Configuration & Pin Assignment



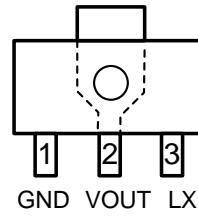
SOT23



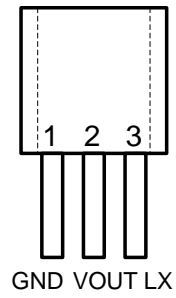
SOT23-3



SOT23-5



SOT89-3

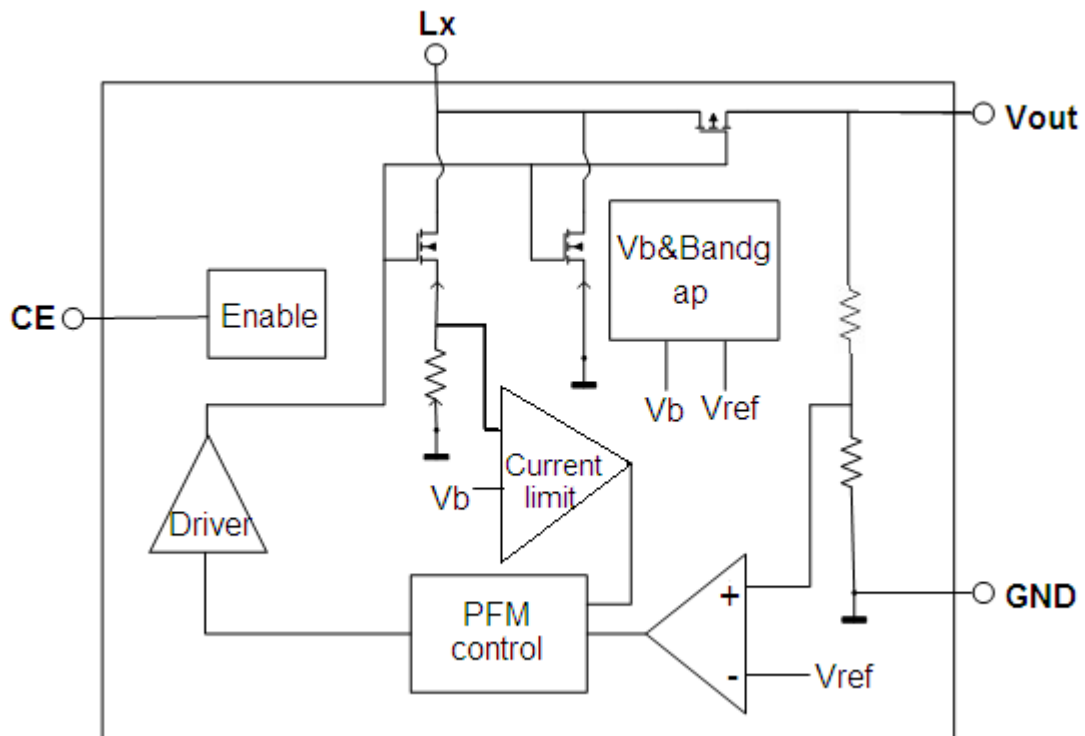


TO92

Pin Assignment

PIN Number				Pin Name	Description
SOT23/ SOT23-3	SOT23-5	SOT89-3	TO92		
2	5	3	3	LX	Switch pin
3	2	2	2	VOUT	Voltage output
-	1	-	-	CE	Chip enable
1	4	1	1	GND	Ground
-	3	-	-	NC	NC

Block Diagram



Absolute Maximum Ratings

Parameter		Symbol	Ratings	Units
CE pin input voltage		VCE	-0.3~6	V
LX pin voltage		LX	-0.3~6	V
LX pin current		ILXmax	1000	mA
VOUT pin voltage		VOUT	-0.3~6	V
Continuous Total Power Dissipation	SOT23-3	P _D	0.54	W
	SOT23-5		0.6	
	SOT89-3		1.25	
	TO92		0.83	
	SOT23		0.38	
Thermal resistance(Junction to air)	SOT23-3	θ _{JA}	230	°C/W
	SOT23-5		210	
	SOT89-3		100	
	TO92		150	
	SOT23		330	
Operating Ambient Temperature Range		T _{OPR}	-40~85	°C
Storage Temperature Range		T _{STG}	-55~150	°C
Maximum junction temperature		T _J	-40~150	°C
Welding temperature		TL	260	°C

Electrical Characteristics

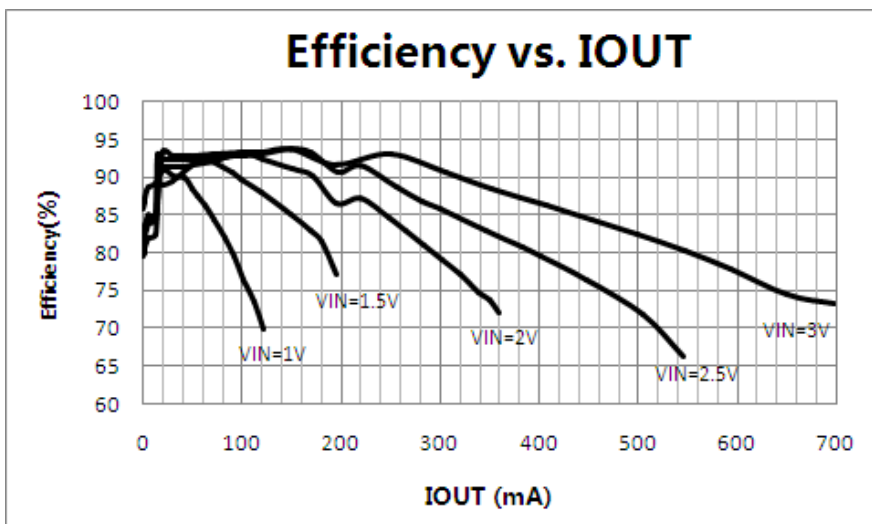
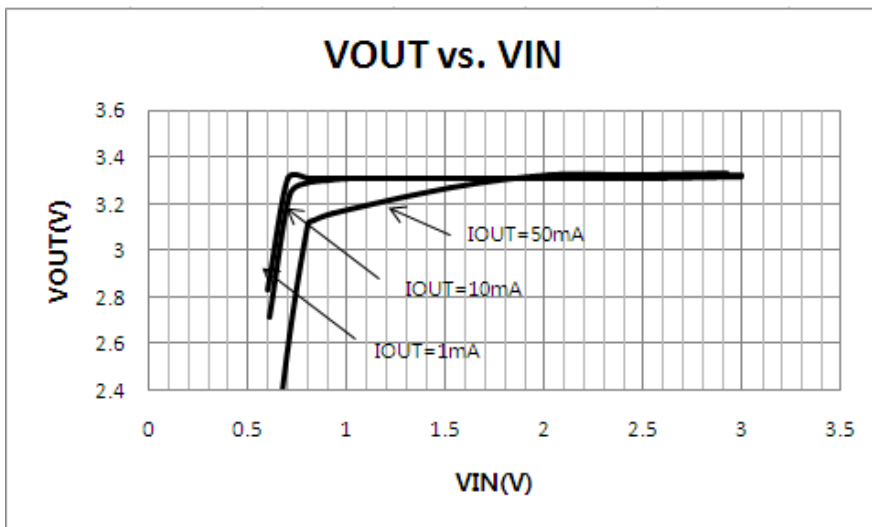
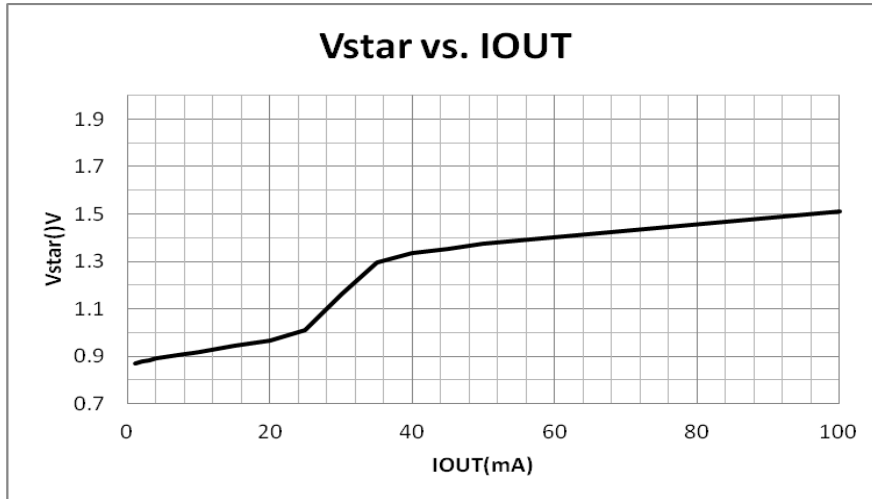
TA = 25 °C, VIN = VEN = 2V, VOUT = 3.3V, L = 22μH, CIN = 10μF, COUT = 100μF, unless otherwise noted.

Symbol	Parameter	Test Conditions	MIN	TYP	MAX	UNIT
Start voltage	Vstart	ILOAD=1mA, VIN:0→2V	0.7	0.9	1.1	V
Hold voltage	Vhold	ILOAD=1mA, VIN:2→0V	0.5			V
Maximum input voltage	Vinmax		0.9		5	V
Output voltage accuracy	Vout		-2		+2	%
Power adjustment	ΔVout1	VIN=Vout×0.4~×0.6, IOUT=10mA		5	20	mV
Load adjustment	ΔVout2	IOUT=0~100mA, VIN=2V		20	30	mV
Quiescent Current	ISS	VOUT=VOUT+0.5		7.5	15	uA
Shutdown current	ISS0	VCE=0V		0	0.5	uA
Current limit	Ilimit		800	1000	1200	mA
No load input current	Iin0	VIN=1.5V, VOUT=2.2V		10	15	uA
Efficiency				93	96	%
oscillation frequency				320		KHz
Oscillation signal duty cycle	DCosc			74		%
EN input high level				0.7		V
EN input low level					0.2	V

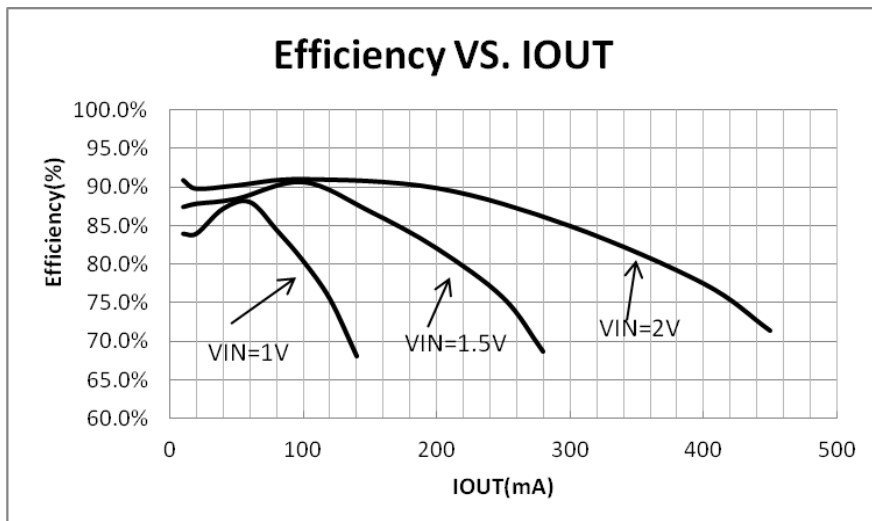
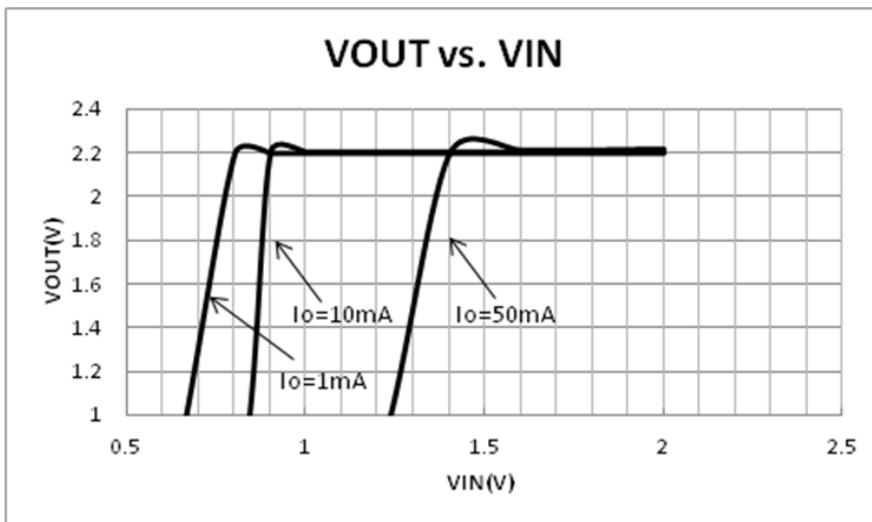
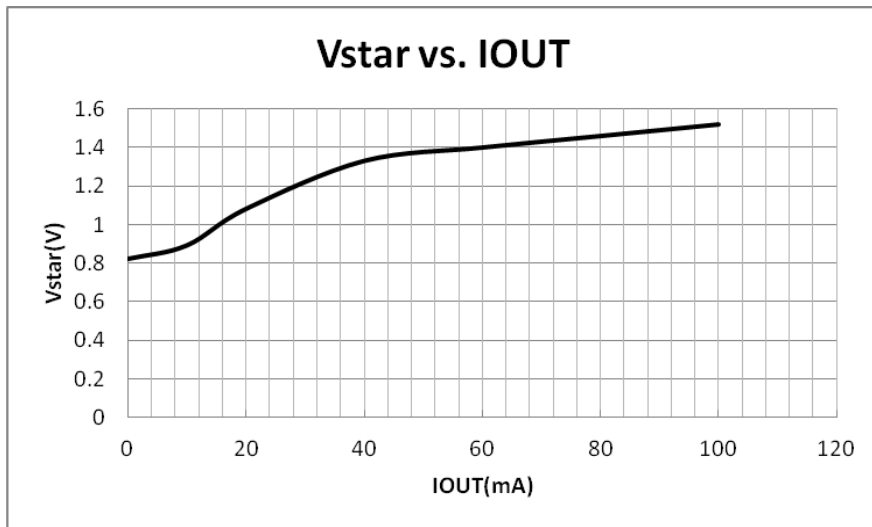
Type Characteristics

L=22uH, CIN=10uF, COUT=100uF, TA = 25 °C, unless otherwise noted.

- ME2188A33

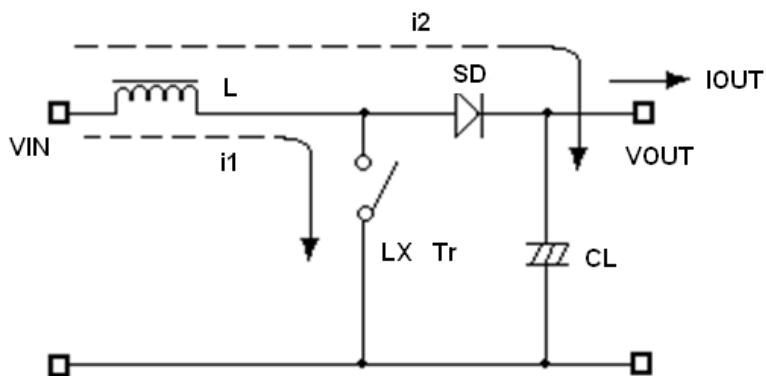


● ME2188A22



Operation Description

ME2188 step-up DC/DC converter charges energy in the inductor when Lx Transistor is on, and discharges the energy with the addition of the energy from input power source thereto, so that a higher output voltage than the input voltage is obtained. Following is the operation diagram.



Switching DC/DC Step up Converter operating process

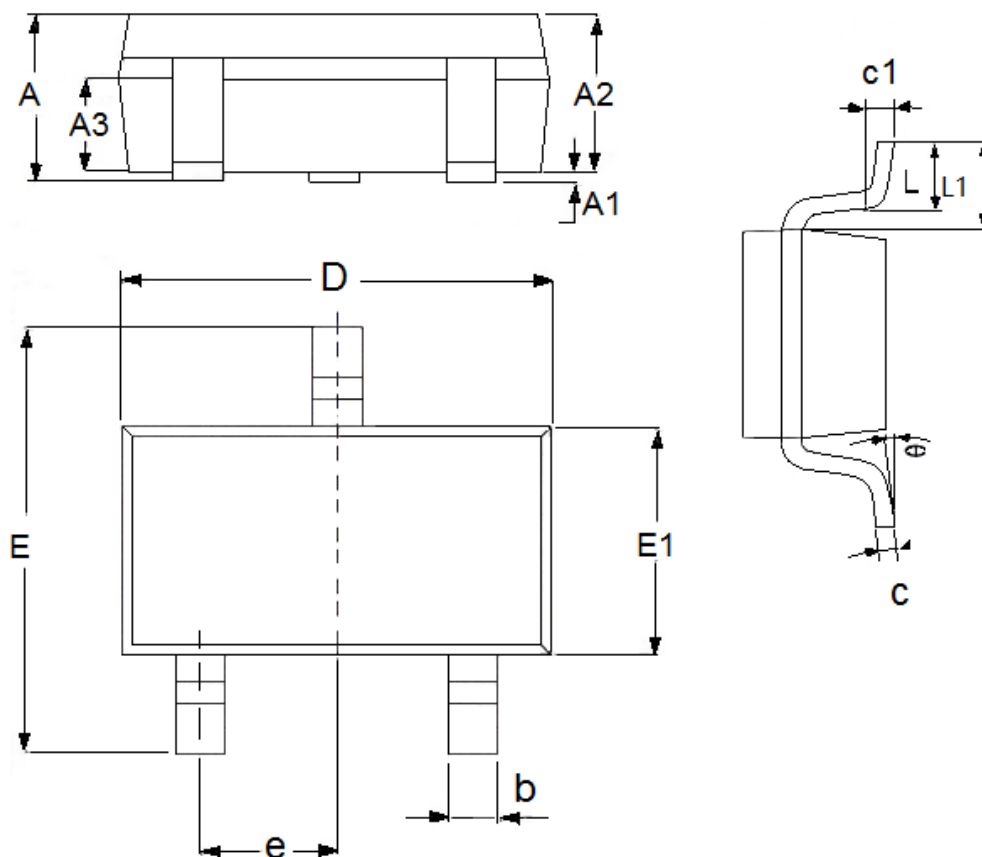
PCB Layout:

Set external components as close as possible to the IC and minimize the connection between the components and the IC. In particular, when an external component is connected to VOUT Pin, make minimum connection with the capacitor.

Make Vss pin sufficient grounding, otherwise, the zero level within IC will varied with the switching current. This may result in unstable operation of IC.

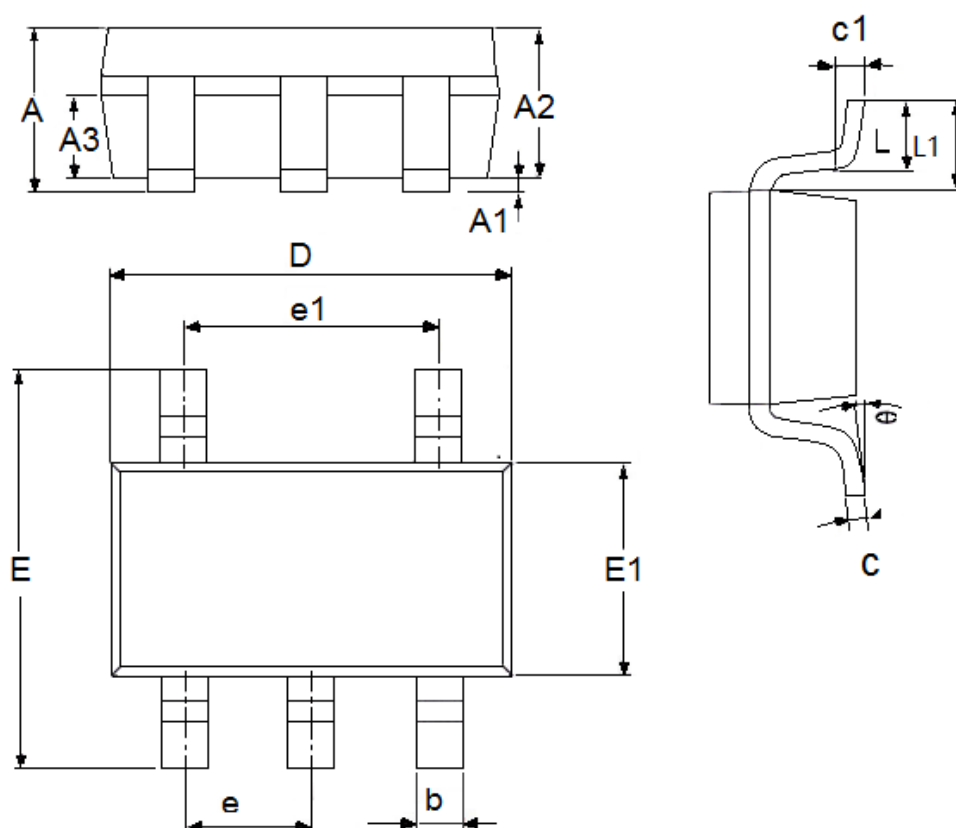
Packaging Information

- Package Type:SOT23-3



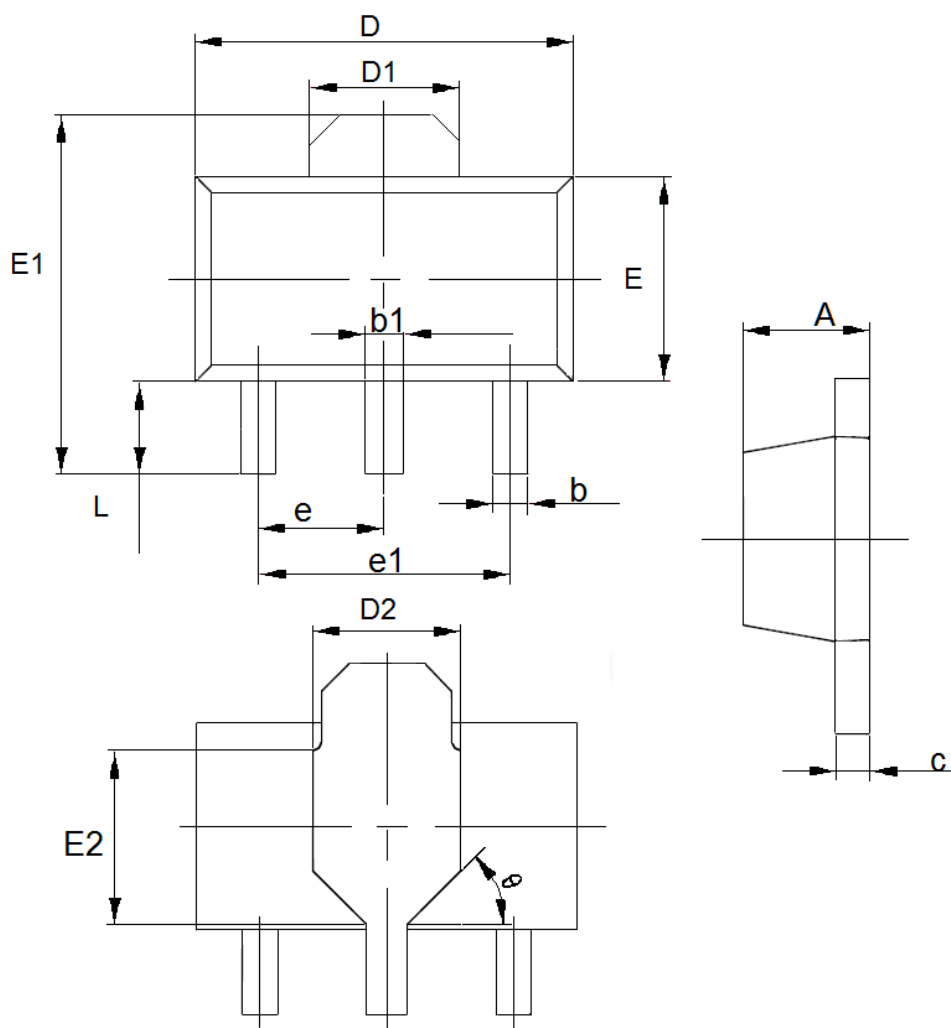
DIM	Millimeters		Inches	
	Min	Max	Min	Max
A	1.05	1.45	0.0413	0.0571
A1	0	0.15	0.0000	0.0059
A2	0.9	1.3	0.0354	0.0512
A3	0.6	0.7	0.0236	0.0276
b	0.25	0.5	0.0098	0.0197
c	0.1	0.25	0.0039	0.0098
D	2.8	3.1	0.1102	0.1220
E	2.6	3.1	0.1023	0.1220
E1	1.5	1.8	0.0591	0.0709
e	0.95(TYP)		0.0374(TYP)	
L	0.25	0.6	0.0098	0.0236
L1	0.59(TYP)		0.0232(TYP)	
θ	0	8°	0.0000	8°
c1	0.2(TYP)		0.0079(TYP)	

● Package Type:SOT23-5



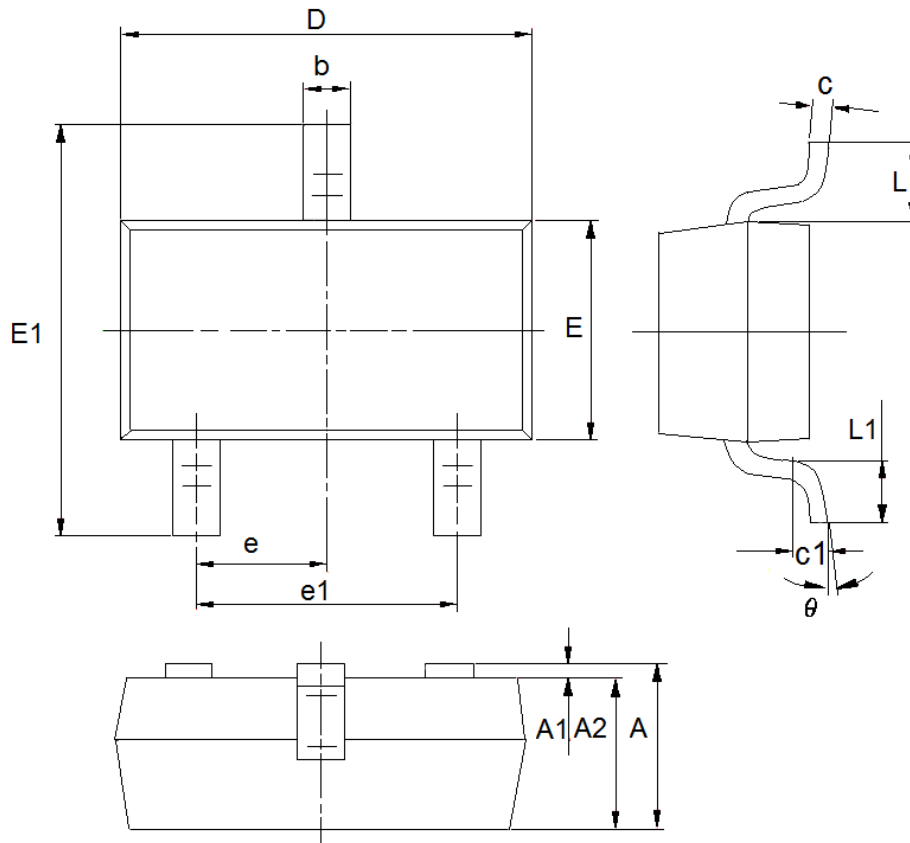
DIM	Millimeters		Inches	
	Min	Max	Min	Max
A	1.05	1.45	0.0413	0.0571
A1	0	0.15	0.0000	0.0059
A2	0.9	1.3	0.0354	0.0512
A3	0.6	0.7	0.0236	0.0276
b	0.25	0.5	0.0098	0.0197
c	0.1	0.23	0.0039	0.0091
D	2.82	3.05	0.1110	0.1201
e1	1.9(TYP)		0.0748(TYP)	
E	2.6	3.05	0.1024	0.1201
E1	1.5	1.75	0.0512	0.0689
e	0.95(TYP)		0.0374(TYP)	
L	0.25	0.6	0.0098	0.0236
L1	0.59(TYP)		0.0232(TYP)	
θ	0	8°	0.0000	8°
c1	0.2(TYP)		0.0079(TYP)	

● Package Type: SOT89-3



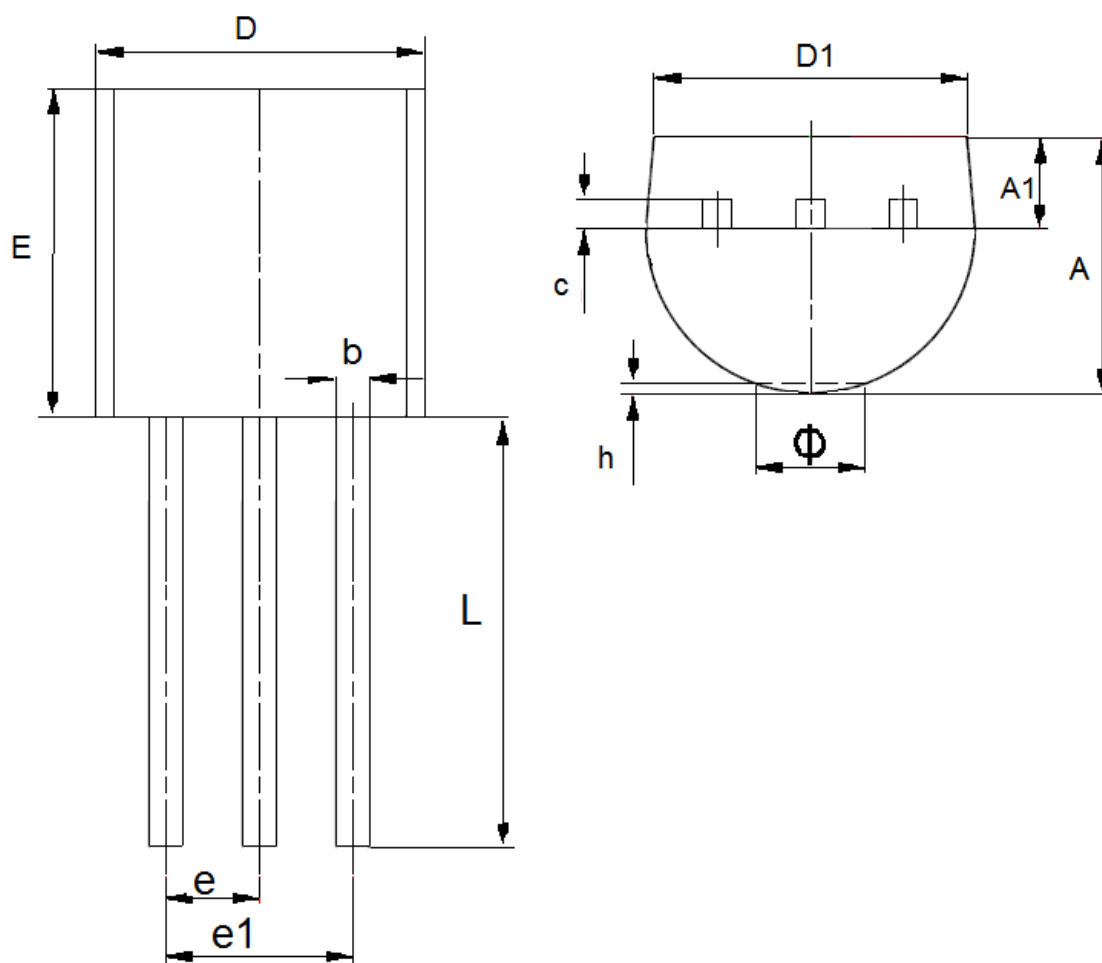
DIM	Millimeters		Inches	
	Min	Max	Min	Max
A	1.4	1.6	0.0551	0.0630
b	0.32	0.52	0.0126	0.0205
b1	0.4	0.58	0.0157	0.0228
c	0.35	0.45	0.0138	0.0177
D	4.4	4.6	0.1732	0.1811
D1	1.55(TYP)		0.061(TYP)	
D2	1.75(TYP)		0.0689(TYP)	
e1	3.0(TYP)		0.1181(TYP)	
E	2.3	2.6	0.0906	0.1023
E1	3.94	4.4	0.1551	0.1732
E2	1.9(TYP)		0.0748(TYP)	
e	1.5(TYP)		0.0591(TYP)	
L	0.8	1.2	0.0315	0.0472
θ	45°		45°	

● Package Type:SOT23



DIM	Millimeters		Inches	
	Min	Max	Min	Max
A	0.9	1.15	0.0354	0.0453
A1	0	0.14	0.0000	0.0055
A2	0.9	1.05	0.0354	0.0413
b	0.28	0.52	0.0110	0.0205
c	0.07	0.23	0.0028	0.0091
D	2.8	3.0	0.1102	0.1181
e1	1.8	2.0	0.0709	0.0787
E	1.2	1.4	0.0472	0.0551
E1	2.2	2.6	0.0866	0.1024
e	0.95(TYP)		0.0374(TYP)	
L	0.55(TYP)		0.0217(TYP)	
L1	0.25	0.55	0.0098	0.0217
θ	0	8°	0.0000	8°
c1	0.25(TYP)		0.0098(TYP)	

● Package Type:TO-92



DIM	Millimeters		Inches	
	Min	Max	Min	Max
A	3.3	3.7	0.1299	0.1457
A1	1.1	1.4	0.0433	0.0551
b	0.38	0.55	0.015	0.0217
c	0.36	0.51	0.0142	0.0201
D	4.3	4.7	0.1693	0.185
D1	3.43	—	0.135	—
E	4.3	4.7	0.1693	0.185
e	1.27TYP		0.05TYP	
e1	2.44	2.64	0.0961	0.1039
L	14.1	14.5	0.5551	0.5709
h	0	0.38	0	0.015
Φ	—	1.6	—	0.063

- The contents of this document will be updated with the product's improvement without prior notice. Please consult our sales staff before using this document to ensure that you are using the latest version.
- The application circuit examples described in this document are only used to indicate the representative use of the product and do not guarantee the design of mass production.
- Please use this product within the limits stated in this document. We will not be responsible for any damage caused by improper use.
- The products described in this document are not allowed to be used in equipment or devices that affect the human body without the written permission of our company, including but not limited to: health equipment, medical equipment, disaster prevention equipment, fuel control equipment, automobile equipment, aviation equipment and vehicle equipment.
- Although our company has always been committed to improving product quality and reliability, semiconductor products have a certain probability of malfunction or wrong work. To prevent personal injury or property damage caused by such accidents, please pay full attention to safety design, for example: Alternate design, fire protection design, and prevention of wrong action design.
- When exporting this product or this document overseas, you should abide by applicable import and export control laws.
- Copying or reprinting part or all of this document in any form without the permission of our company is strictly prohibited.

X-ON Electronics

Largest Supplier of Electrical and Electronic Components

Click to view similar products for [Switching Controllers](#) category:

Click to view products by [Micro One](#) manufacturer:

Other Similar products are found below :

[LV5065VB-TLM-H](#) [LV5066V-TLM-H](#) [LV5725JAZ-AH](#) [633888R](#) [MP2908AGF](#) [AZ7500EP-E1](#) [NCP1012AP133G](#) [NCP1217P133G](#)
[NCP1218AD65R2G](#) [NCP1234AD100R2G](#) [NCP1244BD065R2G](#) [NCP1336ADR2G](#) [NCP1587GDR2G](#) [NCP6153MNTWG](#)
[NCP81005MNTWG](#) [NCP81101BMNTXG](#) [NCP81205MNTXG](#) [HV9123NG-G-M934](#) [IR35207MTRPBF](#) [ISL6367HIRZ](#) [CAT874-80ULGT3](#)
[SJ6522AG](#) [SJE6600](#) [TLE63893GV50XUMA1](#) [IR35215MTRPBF](#) [SG3845DM](#) [NCP1216P133G](#) [NCP1236DD65R2G](#) [NCP1247BD100R2G](#)
[NCP1250BP65G](#) [NCP4202MNR2G](#) [NCP4204MNTXG](#) [NCP6132AMNR2G](#) [NCP81141MNTXG](#) [NCP81142MNTXG](#) [NCP81172MNTXG](#)
[NCP81203MNTXG](#) [NCP81206MNTXG](#) [NX2155HCUPTR](#) [UC3845ADM](#) [UBA2051C](#) [IR35201MTRPBF](#) [MAX8778ETJ+](#)
[MAX17500AAUB+T](#) [MAX17411GTM+T](#) [MAX16933ATIR/V+](#) [NCP1010AP130G](#) [NCP1063AD100R2G](#) [NCP1216AP133G](#)
[NCP1217AP100G](#)