



VOIDLESS-HERMETICALLY SEALED SURFACE MOUNT FAST RECOVERY GLASS RECTIFIERS

Qualified per MIL-PRF-19500/411

*Qualified Levels:
JAN, JANTX, JANTXV
and JANS*

DESCRIPTION

This “fast recovery” rectifier diode series is military qualified and is ideal for high-reliability applications where a failure cannot be tolerated. These industry-recognized 3.0 Amp rated rectifiers for working peak reverse voltages from 50 to 600 volts are hermetically sealed with voidless-glass construction using an internal “Category 1” metallurgical bond. These devices are also available in axial-leaded packages for thru-hole mounting. Microsemi also offers numerous other rectifier products to meet higher and lower current ratings with various recovery time speed requirements including fast and ultrafast device types in both through-hole and surface mount packages.

Important: For the latest information, visit our website <http://www.microsemi.com>.

FEATURES

- Surface mount equivalent of JEDEC registered 1N5415 thru 1N5420 series.
- Voidless hermetically sealed glass package.
- Quadruple-layer passivation.
- Internal “Category 1” Metallurgical bonds.
- Working Peak Reverse Voltage 50 to 600 Volts.
- JAN, JANTX, JANTXV and JANS qualification per MIL-PRF-19500/411 available.
- RoHS compliant versions available (commercial grade only).

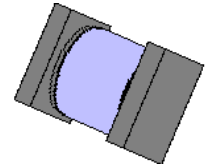
APPLICATIONS / BENEFITS

- Fast recovery 3 Amp rectifiers 50 to 600 V.
- Military and other high-reliability applications.
- General rectifier applications including bridges, half-bridges, catch diodes, etc.
- High forward surge current capability.
- Extremely robust construction.
- Low thermal resistance.
- Controlled avalanche with peak reverse power capability.
- Inherently radiation hard as described in Microsemi “[MicroNote 050](#)”.

MAXIMUM RATINGS

Parameters/Test Conditions	Symbol	Value	Unit
Junction and Storage Temperature	T _J and T _{STG}	-65 to +175	°C
Thermal Resistance Junction-to-End Cap	R _{θJEC}	6.5	°C/W
Forward Surge Current @ 8.3 ms half-sine	I _{FSM}	80	A
Average Rectified Forward Current ⁽³⁾	I _O ^(1, 2)	3	A
@ T _A = 55 °C	I _O ⁽²⁾	2	
@ T _A = 100 °C			
Working Peak Reverse Voltage	V _{RWM}	50 100 200 400 500 600	V
1N5415US			
1N5416US			
1N5417US			
1N5418US			
1N5419US			
1N5420US			
Maximum Reverse Recovery Time ⁽⁵⁾	t _{rr}	150 150 150 150 250 400	ns
1N5415US			
1N5416US			
1N5417US			
1N5418US			
1N5419US			
1N5420US			
Solder Temperature @ 10 s	T _{SP}	260	°C


See notes on next page.



“B” MELF or D-5B Package

Also available in:

“B” Package
(axial-leaded)

 [1N5415 – 1N5420](#)

MSC – Lawrence

6 Lake Street,
Lawrence, MA 01841
1-800-446-1158
(978) 620-2600
Fax: (978) 689-0803

MSC – Ireland

Gort Road Business Park,
Ennis, Co. Clare, Ireland
Tel: +353 (0) 65 6840044
Fax: +353 (0) 65 6822298

Website:

www.microsemi.com

MAXIMUM RATINGS

- Notes:**
- Derate linearly at 22 mA/°C for $55\text{ °C} \leq T_A \leq 100\text{ °C}$.
 - Above $T_A = 100\text{ °C}$, derate linearly at 26.7 mA/°C to zero at $T_A = 175\text{ °C}$.
 - These ambient ratings are for PC boards where thermal resistance from mounting point to ambient is sufficiently controlled where $T_{J(max)}$ does not exceed 175°C.

MECHANICAL and PACKAGING

- CASE: Hermetically sealed voidless hard glass with Tungsten slugs.
- TERMINALS: End caps are Copper with Tin/Lead (Sn/Pb) finish. Note: Previous inventory had solid Silver with Tin/Lead (Sn/Pb) finish. RoHS compliant matte-Tin is available for commercial grade only.
- MARKING: Cathode band only.
- POLARITY: Cathode indicated by band.
- TAPE & REEL option: Standard per EIA-481-B. Contact factory for quantities.
- WEIGHT: 539 milligrams.
- See [Package Dimensions](#) and recommended [Pad Layout](#) on last page.

PART NOMENCLATURE

JAN 1N5415 US (e3)

Reliability Level

JAN = JAN Level
 JANTX = JANTX Level
 JANTXV = JANTXV Level
 JANS = JANS Level
 Blank = commercial

JEDEC type number

See [Electrical Characteristics](#) table

RoHS Compliance

e3 = RoHS compliant ([available on commercial grade only](#))
 Blank = non-RoHS compliant

MELF Package
SYMBOLS & DEFINITIONS

Symbol	Definition
V_{BR}	Minimum Breakdown Voltage: The minimum voltage the device will exhibit at a specified current.
V_{RWM}	Working Peak Reverse Voltage: The maximum peak voltage that can be applied over the operating temperature range excluding all transient voltages (ref JESD282-B).
I_O	Average Rectified Output Current: The Output Current averaged over a full cycle with a 50 Hz or 60 Hz sine-wave input and a 180 degree conduction angle.
V_F	Maximum Forward Voltage: The maximum forward voltage the device will exhibit at a specified current.
I_R	Maximum Reverse Current: The maximum reverse (leakage) current that will flow at the specified voltage and temperature.
t_{rr}	Reverse Recovery Time: The time interval between the instant the current passes through zero when changing from the forward direction to the reverse direction and a specified decay point after a peak reverse current occurs.

ELECTRICAL CHARACTERISTICS

TYPE	MINIMUM BREAKDOWN VOLTAGE $V_{BR} @ 50 \mu A$ Volts	FORWARD VOLTAGE $V_F @ 9 A$		MAXIMUM REVERSE CURRENT $I_R @ V_{RWM}$		CAPACITANCE C $V_R @ 4 V$ pF
		MIN. Volts	MAX. Volts	25 °C μA	100 °C μA	
		1N5415US	55	0.6	1.5	
1N5416US	110	0.6	1.5	1.0	20	430
1N5417US	220	0.6	1.5	1.0	20	250
1N5418US	440	0.6	1.5	1.0	20	165
1N5419US	550	0.6	1.5	1.0	20	140
1N5420US	660	0.6	1.5	1.0	20	120

NOTE 1: $I_F = 0.5 A$, $I_{RM} = 1 A$, $I_{R(REC)} = 0.250 A$

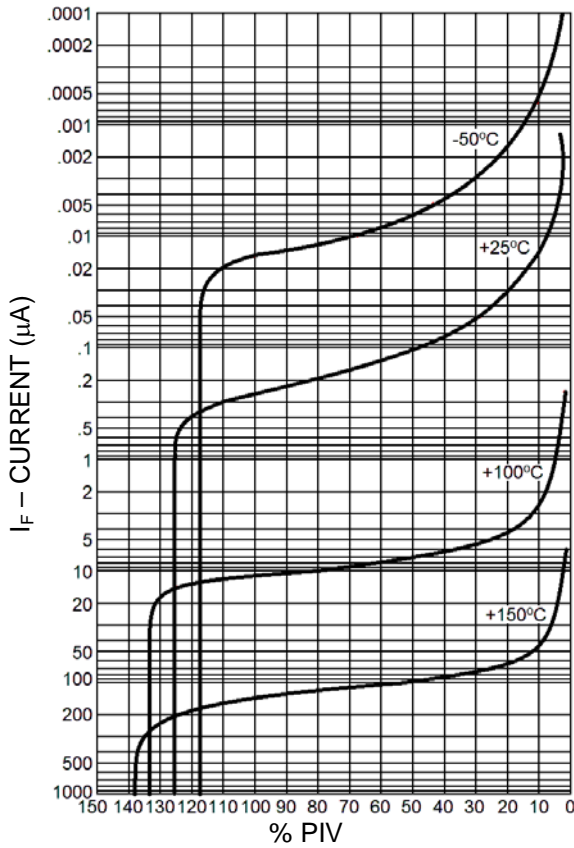
GRAPHS


FIGURE 1
Typical Reverse Current vs. PIV

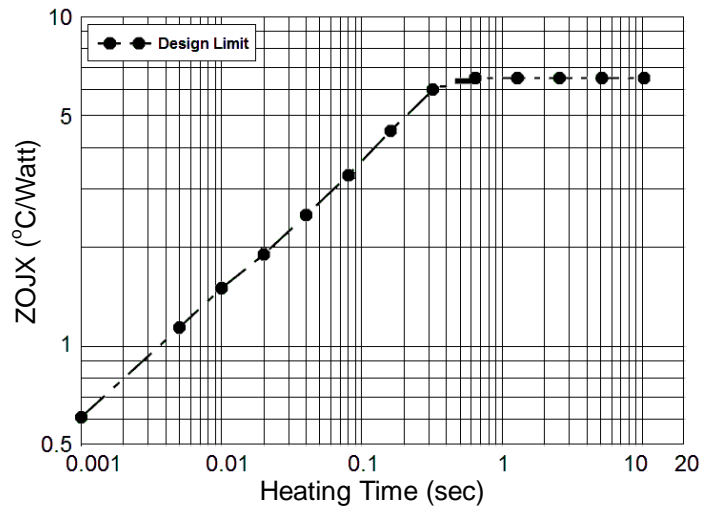


FIGURE 2
Maximum Thermal Impedance

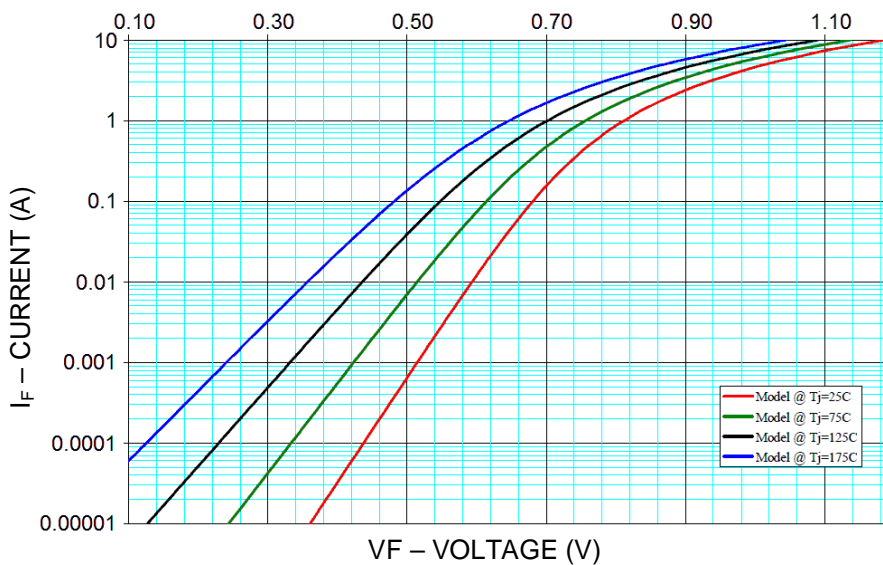
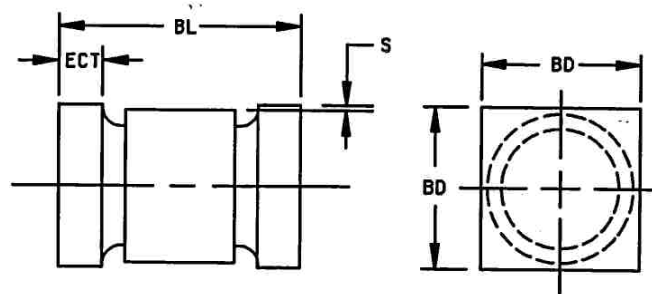


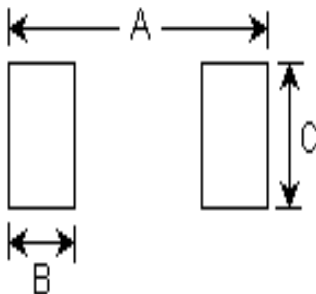
FIGURE 3
Typical Forward Current vs. Forward Voltage

PACKAGE DIMENSIONS


	INCH		MILLIMETERS	
	MIN	MAX	MIN	MAX
BL	0.200	0.225	5.08	5.72
BD	0.137	0.148	3.48	3.76
ECT	0.019	0.028	0.48	0.71
S	0.003	---	0.08	---

NOTES:

1. Dimensions are in inches.
2. Millimeter equivalents are given for general information only.
3. Dimensions are pre-solder dip.
4. Minimum clearance of glass body to mounting surface on all orientations.
5. In accordance with ASME Y14.5M, diameters are equivalent to Φ x symbology.
6. This Package Outline has also previously been identified as "D-5B"

PAD LAYOUT


	INCH	MILLIMETERS
A	0.288	7.32
B	0.070	1.78
C	0.155	3.94

Note: If mounting requires adhesive separate from the solder, an additional 0.080 inch diameter contact may be placed in the center between the pads as an optional spot for cement.

X-ON Electronics

Largest Supplier of Electrical and Electronic Components

Click to view similar products for [Rectifiers](#) category:

Click to view products by [Microsemi](#) manufacturer:

Other Similar products are found below :

[70HFR40](#) [RL252-TP](#) [150KR30A](#) [1N5397](#) [NTE5841](#) [NTE6038](#) [SCF5000](#) [1N4002G](#) [1N4005-TR](#) [JANS1N6640US](#) [481235F](#)
[RRE02VS6SGTR](#) [067907F](#) [MS306](#) [70HF40](#) [T85HFL60S02](#) [US2JFL-TP](#) [A1N5404G-G](#) [ACGRA4007-HF](#) [ACGRB207-HF](#)
[CLH03\(Te16L,Q\)](#) [ACGRC307-HF](#) [ACEFC304-HF](#) [NTE6356](#) [NTE6359](#) [NTE6002](#) [NTE6023](#) [NTE6039](#) [NTE6077](#) [85HFR60](#) [40HFR60](#)
[70HF120](#) [85HFR80](#) [D126A45C](#) [SCF7500](#) [D251N08B](#) [SCHJ22.5K](#) [SM100](#) [SCPA2](#) [SCH10000](#) [SDHD5K](#) [VS-12FL100S10](#) [ACGRA4001-](#)
[HF](#) [D1821SH45T PR](#) [D1251S45T](#) [NTE5990](#) [NTE6358](#) [NTE6162](#) [NTE5850](#) [SKN300/16](#)