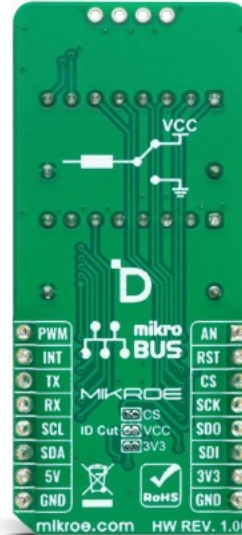


## EasyPull Click



PID: MIKROE-6053

**EasyPull Click** is a compact add-on board designed to easily configure mikroBUS™ signals into pull-up or pull-down states, perfect for various applications. It features a universal setup with 4.7kΩ resistors to ensure stable performance across vital communication lines such as SPI, UART, I2C, and standard mikroBUS™ signals (AN, RST, PWM, INT). The board also includes two easy-to-use 8-position switches for quick signal adjustments, an unpopulated EXT header for extra GPIO functionality, and a special low-power mode to maximize energy efficiency. This Click board™ is an ideal solution for developers seeking to enhance their projects with reliable signal management, especially in the prototyping or final product development stages.

EasyPull Click is fully compatible with the mikroBUS™ socket and can be used on any host system supporting the [mikroBUS™](#) standard. It comes with the [mikroSDK](#) open-source libraries, offering unparalleled flexibility for evaluation and customization. What sets this [Click board™](#) apart is the groundbreaking [ClickID](#) feature, enabling your host system to seamlessly and automatically detect and identify this add-on board.

Mikroe produces entire development toolchains for all major microcontroller architectures.

Committed to excellency, we are dedicated to helping engineers bring the project development up to speed and achieve outstanding results.



ISO 27001: 2013 certification of informational security management system.  
 ISO 14001: 2015 certification of environmental management system.  
 OHSAS 18001: 2008 certification of occupational health and safety management system.



ISO 9001: 2015 certification of quality management system (QMS).

## Specifications

Type	Proto
Applications	Ideal solution for developers seeking to enhance their projects with reliable signal management, especially in the prototyping or final product development stages
On-board modules	DTH-08, 8-position 3-state DIP switch from Eker International
Key Features	Signal pull state configuration flexibility, universal design with 4.7kΩ resistors, dual 8-position switches, additional user-configurable I/O signals, special low-power mode, compact and durable design, and more
Interface	Analog,GPIO,I2C,PWM,SPI,UART
ClickID	Yes
Compatibility	mikroBUS™
Click board size	L (57.15 x 25.4 mm)
Input Voltage	3.3V or 5V

## Resources

[mikroBUS™](#)

[mikroSDK](#)

[Click board™ Catalog](#)

[Click Boards™](#)

## Downloads

[EasyPull click example on Libstock](#)

[EasyPull click 2D and 3D files](#)

[EasyPull click schematic](#)

Mikroe produces entire development toolchains for all major microcontroller architectures.

Committed to excellency, we are dedicated to helping engineers bring the project development up to speed and achieve outstanding results.



ISO 27001: 2013 certification of informational security management system.  
 ISO 14001: 2015 certification of environmental management system.  
 OHSAS 18001: 2008 certification of occupational health and safety management system.



ISO 9001: 2015 certification of quality management system (QMS).

## X-ON Electronics

Largest Supplier of Electrical and Electronic Components

*Click to view similar products for [Daughter Cards & OEM Boards](#) category:*

*Click to view products by [MikroElektronika](#) manufacturer:*

Other Similar products are found below :

[MPC574XG-176DS](#) [SPC56ELADPT144S](#) [DM160216](#) [AIR FLOW CLICK](#) [ADC 19 CLICK](#) [MIKROE-3591](#) [STEPPER 20 CLICK](#) [DC MOTOR 26 CLICK](#) [ANNA-B412 CLICK](#) [LED DRIVER 19 CLICK](#) [6DOF IMU 20 CLICK](#) [TWO-WIRE ETH CLICK](#) [USB UART ISO CLICK](#) [ANGLE 10 CLICK](#) [AIR MOTION CLICK](#) [EXPAND 11 CLICK](#) [THERMO 26 CLICK](#) [CLICK SHIELD FOR NUCLEO-64](#) [DIGI ISOLATOR CLICK](#) [DIFF PRESS 4 CLICK](#) [GROVE BASE FOR XIAO](#) [HEADPHONE AMP 3 CLICK](#) [EEPROM 8 CLICK](#) [SMART BUCK 3 CLICK](#) [DC MOTOR 25 CLICK](#) [STEP DOWN 10 CLICK](#) [ESP8684 CLICK](#) [LP WIFI CLICK](#) [AMBIENT 22 CLICK](#) [GYRO 9 CLICK](#) [SHUTTER CLICK](#) [SMART DOF 3 CLICK](#) [UWB 3 CLICK](#) [A5000 PLUG&TRUST CLICK](#) [WIREPAS CLICK](#) [HOD CAP CLICK](#) [DC MOTOR 12 CLICK](#) [PWR METER 3 CLICK](#) [BAROMETER 12 CLICK](#) [SPI ISOLATOR 5 CLICK](#) [EXPANSION BASE FOR XIAO WITH GROVE OLED](#) [NANO GPS 3 CLICK](#) [DC MOTOR 23 CLICK](#) [CAN FD 7 CLICK](#) [NANO POWER 3 CLICK](#) [ROUND DISPLAY FOR XIAO](#) [LIGHTRANGER 11 CLICK](#) [RS485 8 CLICK](#) [NANOBEACON CLICK](#) [OPTO 7 CLICK](#)