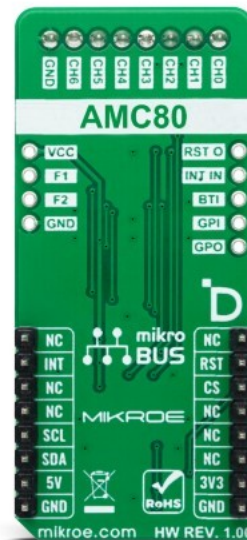


HW Monitor 2 Click



PID: MIKROE-5685

HW Monitor 2 Click is a compact add-on board used to monitor and regulate the performance of various hardware components within an embedded system. This board features the [AMC80](#), an I2C-configurable system hardware monitor from [Texas Instruments](#) that contains a 10-bit ADC capable of measuring seven positive voltages and local temperature. The AMC80 also has two programmable fan speed monitoring inputs besides other hardware monitoring functions like chassis intrusion detection, additional external interrupt input, and master reset for external purposes, as well as a programmable upper over-limit and lower under-limit alarms that activate when the programmed limits are exceeded. This Click board™ is suitable for system thermal and hardware monitoring for various servers, electronic test equipment and instrumentation, communications infrastructure, consumer electronics, and more.

HW Monitor 2 Click is supported by a [mikroSDK](#) compliant library, which includes functions that simplify software development. This [Click board™](#) comes as a fully tested product, ready to be used on a system equipped with the [mikroBUS™](#) socket.

Mikroe produces entire development toolchains for all major microcontroller architectures.

Committed to excellency, we are dedicated to helping engineers bring the project development up to speed and achieve outstanding results.



ISO 27001: 2013 certification of informational security management system.
 ISO 14001: 2015 certification of environmental management system.
 OHSAS 18001: 2008 certification of occupational health and safety management system.



ISO 9001: 2015 certification of quality management system (QMS).

Specifications

Type	ADC
Applications	Can be used for system thermal and hardware monitoring for various servers, electronic test equipment and instrumentation, communications infrastructure, consumer electronics, and more
On-board modules	AMC80 - system hardware monitor from Texas Instruments
Key Features	Seven input channels with 10-bit resolution, local temperature sensing, two programmable fan speed monitoring inputs, chassis intrusion detection, power switch bypass, external interrupt and master reset, and more
Interface	I2C
Compatibility	mikroBUS
Click board size	L (57.15 x 25.4 mm)
Input Voltage	3.3V or 5V

Resources

[mikroBUS™](#)

[mikroSDK](#)

[Click board™ Catalog](#)

[Click boards™](#)

Downloads

[HW Monitor 2 click example on Libstock](#)

[HW Monitor 2 click 2D and 3D files](#)

[HW Monitor 2 click schematic](#)

[AMC80 datasheet](#)

Mikroe produces entire development toolchains for all major microcontroller architectures.

Committed to excellency, we are dedicated to helping engineers bring the project development up to speed and achieve outstanding results.



ISO 27001: 2013 certification of informational security management system.
 ISO 14001: 2015 certification of environmental management system.
 OHSAS 18001: 2008 certification of occupational health and safety management system.



ISO 9001: 2015 certification of quality management system (QMS).

X-ON Electronics

Largest Supplier of Electrical and Electronic Components

Click to view similar products for [Daughter Cards & OEM Boards](#) category:

Click to view products by [MikroElektronika](#) manufacturer:

Other Similar products are found below :

[MPC574XG-176DS](#) [SPC56ELADPT144S](#) [DM160216](#) [AIR FLOW CLICK](#) [TDC CLICK](#) [ADC 19 CLICK](#) [MIKROE-3591](#) [STEPPER 20 CLICK](#) [DC MOTOR 26 CLICK](#) [ANNA-B412 CLICK](#) [LED DRIVER 19 CLICK](#) [6DOF IMU 20 CLICK](#) [TWO-WIRE ETH CLICK](#) [USB UART ISO CLICK](#) [ANGLE 10 CLICK](#) [AIR MOTION CLICK](#) [EXPAND 11 CLICK](#) [THERMO 26 CLICK](#) [CLICK SHIELD FOR NUCLEO-64](#) [DIGI ISOLATOR CLICK](#) [DIFF PRESS 4 CLICK](#) [GROVE BASE FOR XIAO](#) [HEADPHONE AMP 3 CLICK](#) [EEPROM 8 CLICK](#) [SMART BUCK 3 CLICK](#) [DC MOTOR 25 CLICK](#) [STEP DOWN 10 CLICK](#) [ESP8684 CLICK](#) [LP WIFI CLICK](#) [AMBIENT 22 CLICK](#) [GYRO 9 CLICK](#) [SHUTTER CLICK](#) [SMART DOF 3 CLICK](#) [UWB 3 CLICK](#) [A5000 PLUG&TRUST CLICK](#) [WIREPAS CLICK](#) [HOD CAP CLICK](#) [DC MOTOR 12 CLICK](#) [PWR METER 3 CLICK](#) [BAROMETER 12 CLICK](#) [SPI ISOLATOR 5 CLICK](#) [EXPANSION BASE FOR XIAO WITH GROVE OLED](#) [NANO GPS 3 CLICK](#) [DC MOTOR 23 CLICK](#) [CAN FD 7 CLICK](#) [NANO POWER 3 CLICK](#) [ROUND DISPLAY FOR XIAO](#) [ULTRASONIC 5 CLICK](#) [NANOBEACON CLICK](#) [OPTO 7 CLICK](#)