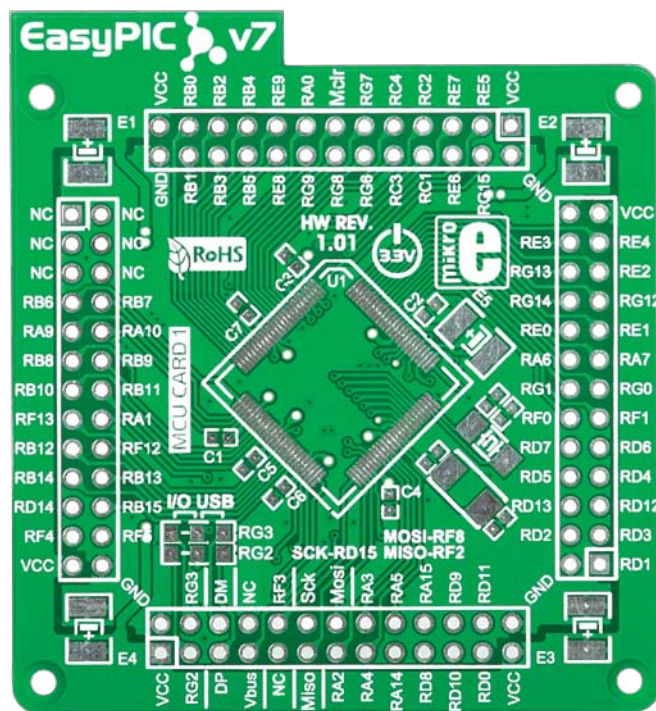


Empty 100-pin TQFP PT MCU CARD 1



Supported microcontrollers

PIC32MX534F064L
PIC32MX564F064L
PIC32MX564F128L
PIC32MX575F256L
PIC32MX575F512L
PIC32MX664F064L
PIC32MX664F128L
PIC32MX675F256L
PIC32MX675F512L
PIC32MX695F512L
PIC32MX764F128L
PIC32MX775F256L
PIC32MX775F512L
PIC32MX795F512L

PIC24FJ64GA310
PIC24FJ128GA310
PIC24FJ64GA110
PIC24FJ128GA110
PIC24FJ64GB110
PIC24FJ192GA110
PIC24FJ128GB110
PIC24FJ256GA110
PIC24FJ192GB110
PIC24FJ256GB110
PIC24FJ128GB210
PIC24FJ128DA110
PIC24FJ256GB210
PIC24FJ256DA110
PIC24FJ128DA210
PIC24FJ256DA210
dsPIC33EP256MU810
dsPIC33EP512MU810
PIC24EP256GU810
PIC24EP512GU810

Bill of Materials for PT MCU card 1

Designator	Comment	Footprint
C1	100nF	0603
C2	100nF	0603
C3	100nF	0603
C4	100nF	0603
C5	100nF	0603
C6	100nF	0603
C7	100nF	0603
C8	22pF	0603
C9	22pF	0603
C10	22pF	0603
C11	22pF	0603
E1	10uF	ELCO CASE-B
E2	10uF	ELCO CASE-B
E3	10uF	ELCO CASE-B
E4	10uF	ELCO CASE-B
E5	10uF	ELCO CASE-B
HD1	M2X26	HEADER 2x13A
HD2	M2X26	HEADER 2x13B
HD3	M2X26	HEADER 2x13C
HD4	M2X26	HEADER 2x13D
J1	OR	0805 DUAL
J2	OR	0805 DUAL
U1	MICROCONTROLLER	LQFP-100
X1	8MHz	CRYSTAL ABM7 SMD V2
X2	32.768KHz	FC-255

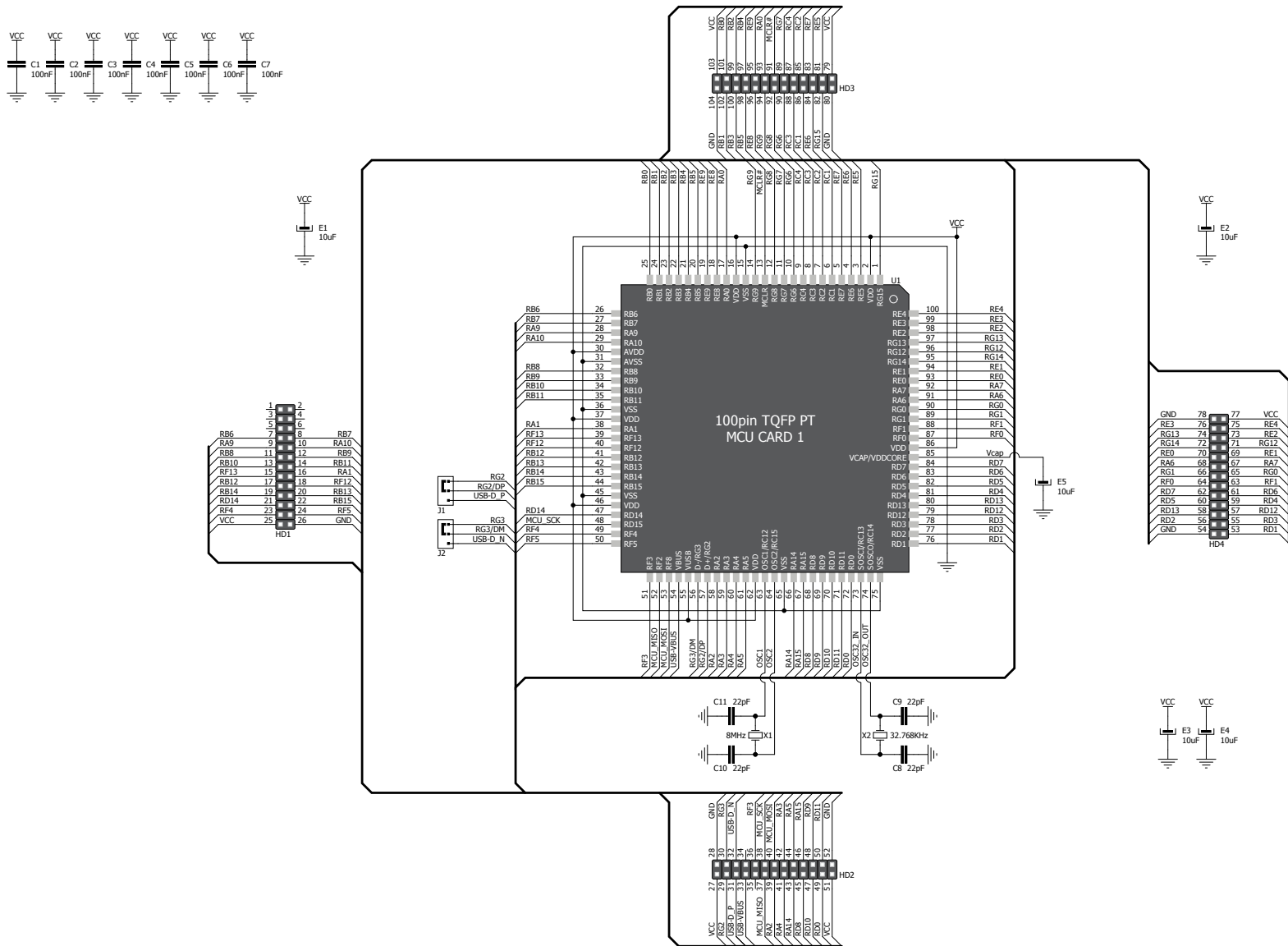


Figure 1: MCU card schematic

Card dimensions

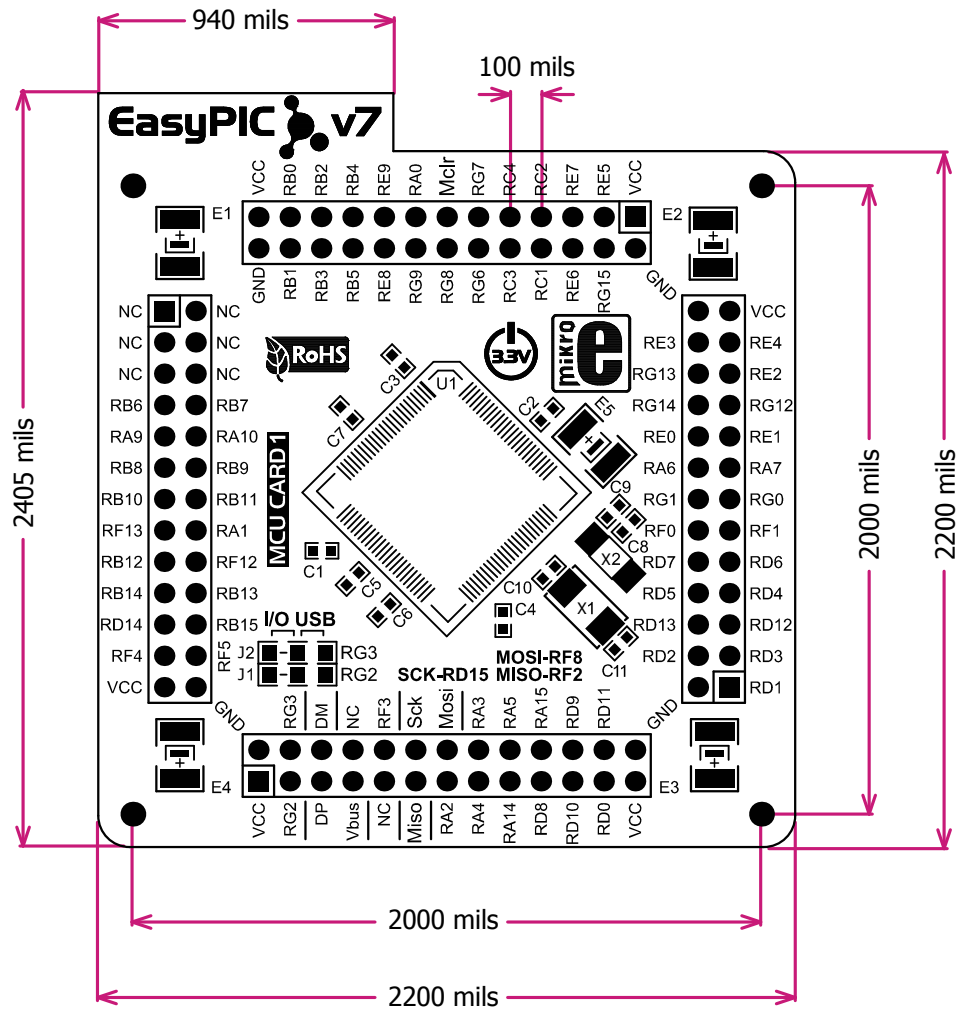
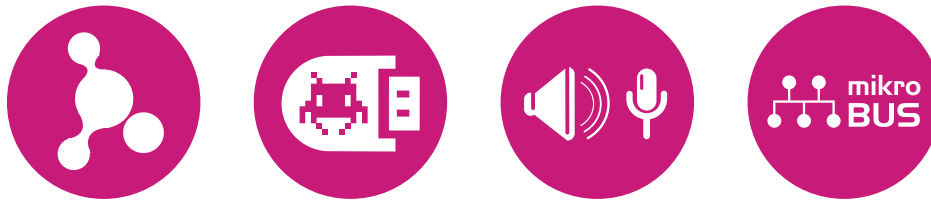


Figure 2: MCU card dimensions.



If you want to learn more about our products, please visit our website at www.mikroe.com

If you are experiencing some problems with any of our products or just need additional information, please place your ticket at www.mikroe.com/esupport

If you have any questions, comments or business proposals,
do not hesitate to contact us at office@mikroe.com

X-ON Electronics

Largest Supplier of Electrical and Electronic Components

Click to view similar products for [Daughter Cards & OEM Boards](#) category:

Click to view products by [MikroElektronika](#) manufacturer:

Other Similar products are found below :

[ADZS-21262-1-EZEXT](#) [27911](#) [SPC56ELADPT144S](#) [TMDXRM46CNCD](#) [DM160216](#) [EV-ADUCM350GPIOHZ](#) [EV-ADUCM350-BIO3Z](#)
[ATSTK521](#) [1130](#) [MA160015](#) [MA180033](#) [MA240013](#) [MA240026](#) [MA320014](#) [MA330014](#) [MA330017](#) [TLK10034SMAEVM](#) [MIKROE-](#)
[2152](#) [MIKROE-2154](#) [MIKROE-2381](#) [TSSOP20EV](#) [DEV-11723](#) [MIKROE-1108](#) [MIKROE-1516](#) [SPS-READER-GEVK](#) [AC244049](#)
[AC244050](#) [AC320004-3](#) [2077](#) [ATSMARTCARD-XPRO](#) [EIC - Q600 -230](#) [ATZB-212B-XPRO](#) [SPC560PADPT100S](#) [SPC560BADPT64S](#)
[MA180018](#) [EIC - Q600 -220](#) [AC164134-1](#) [BOB-12035](#) [BB-BONE-BATT-01](#) [STM8/128-D/RAIS](#) [AC164127-6](#) [AC164127-4](#) [AC164134-3](#)
[AC164156](#) [MA320021](#) [MA320024](#) [DFR0285](#) [DFR0312](#) [DFR0356](#) [MA320023](#)