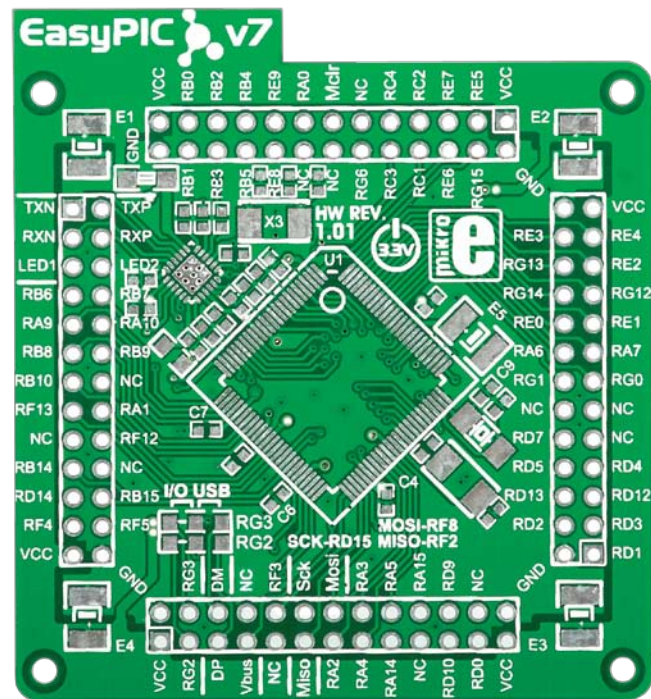


Empty 100-pin TQFP PT ETHERNET



Bill of Materials for PT ETHERNET MCU card

Designator	Comment	Footprint
C1	100nF	0603
C2	100nF	0603
C3	100nF	0603
C4	100nF	0603
C5	100nF	0603
C6	100nF	0603
C7	100nF	0603
C8	22pF	0603
C9	22pF	0603
C10	22pF	0603
C11	22pF	0603
C12	2.2uF	0805
C13	100nF	0603
C14	100nF	0603
C15	22pF	0603
C16	22pF	0603
E1	10uF	ELCO CASE-B
E2	10uF	ELCO CASE-B
E3	10uF	ELCO CASE-B
E4	10uF	ELCO CASE-B
E5	10uF	ELCO CASE-B
R1	1M	0603
R2	12k1	0603
R3	1k5	0603
R4	27	0603
R5	27	0603

Supported microcontrollers

PIC32MX664F064L *PIC32MX764F128L*
PIC32MX664F128L *PIC32MX775F256L*
PIC32MX675F256L *PIC32MX775F512L*
PIC32MX675F512L *PIC32MX795F512L*
PIC32MX695F512L

Designator	Comment	Footprint
R6	27	0603
R7	27	0603
R8	27	0603
R9	27	0603
R10	27	0603
FP1	FERRITE	FERRITE 1206
HD1	M2X26	HEADER 2x13A
HD2	M2X26	HEADER 2x13B
HD3	M2X26	HEADER 2x13C
HD4	M2X26	HEADER 2x13D
J1	OR	0805 DUAL
J2	OR	0805 DUAL
U1	MICROCONTROLLER	LQFP-100
U2	LAN8720A	LCC-24
X1	8MHz	CRYSTAL ABM7 SMD V2
X2	32.768KHz	FC-255
X3	25MHz	CRYSTAL ABM7 SMD V2

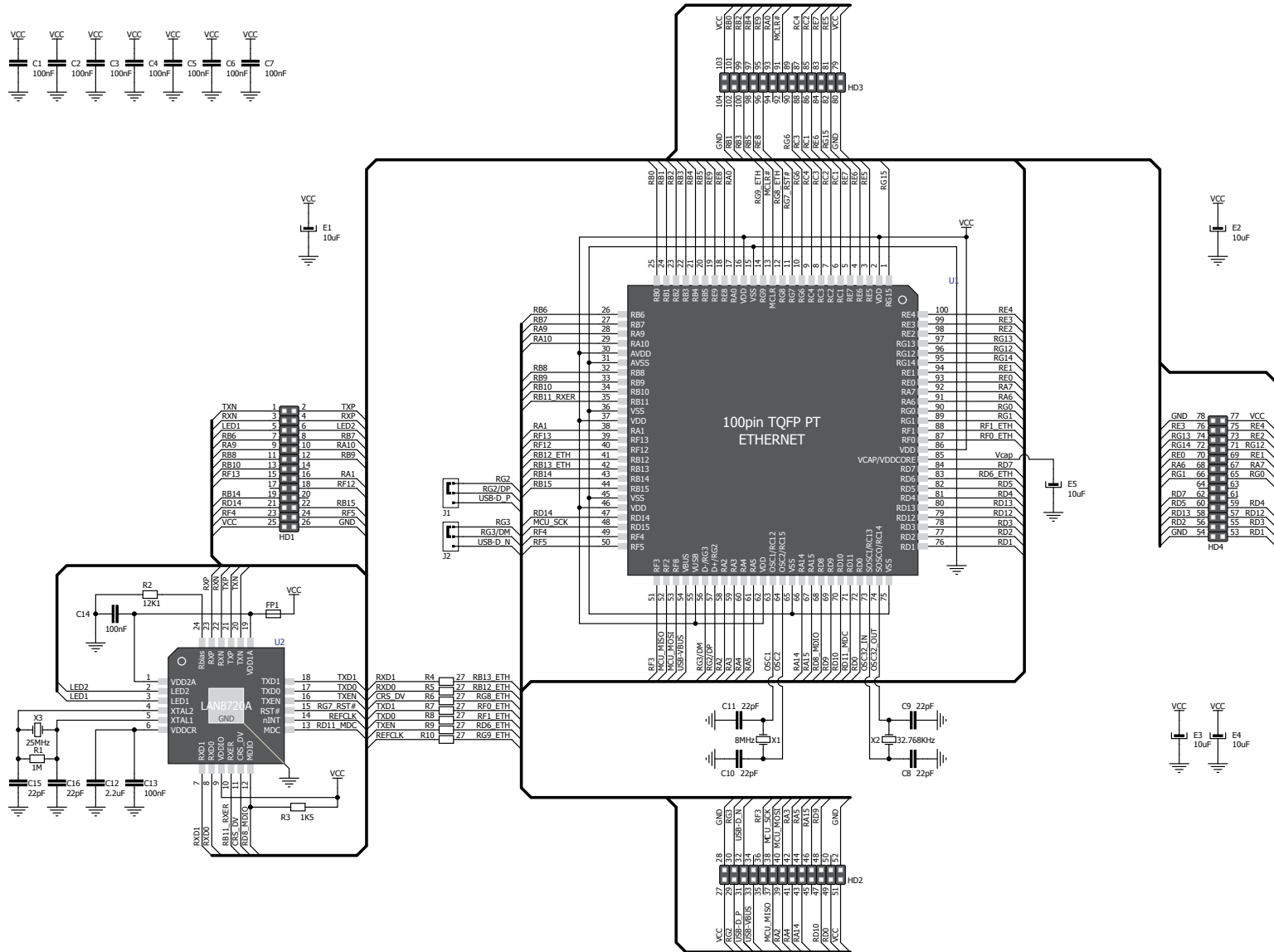


Figure 1: MCU card schematic

Card dimensions

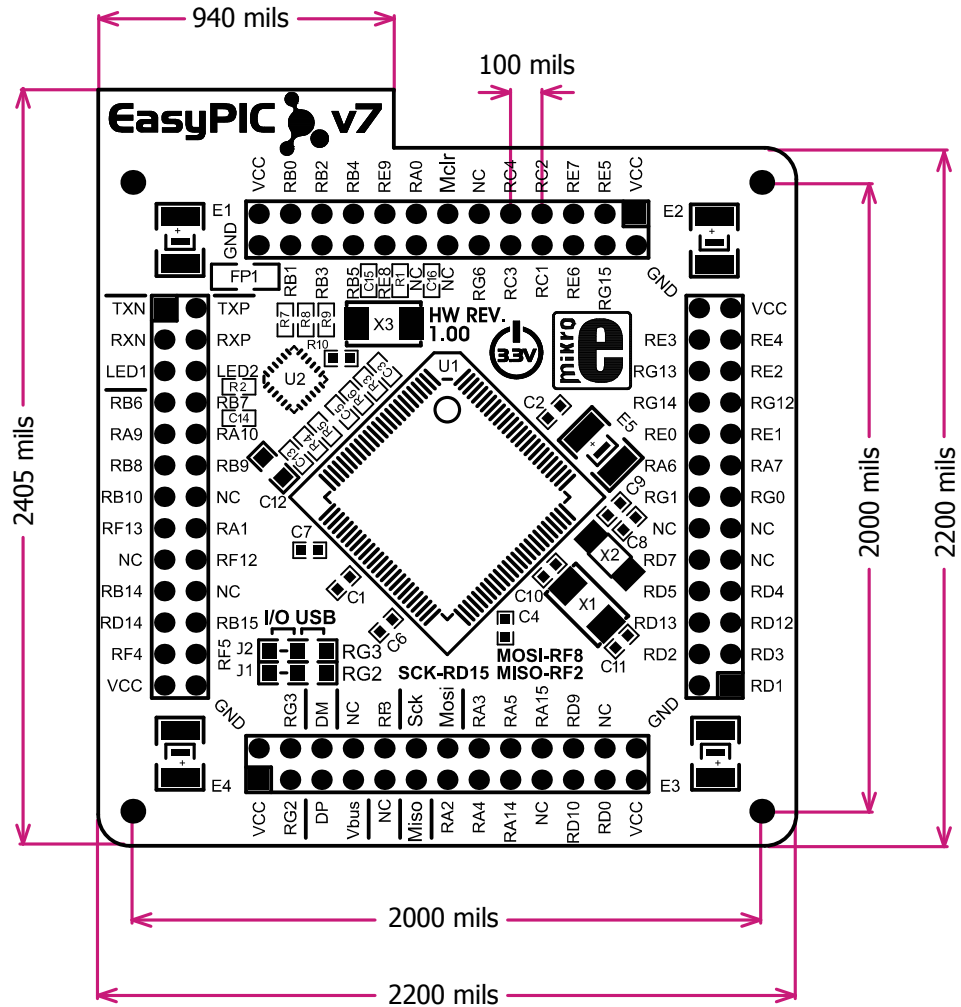
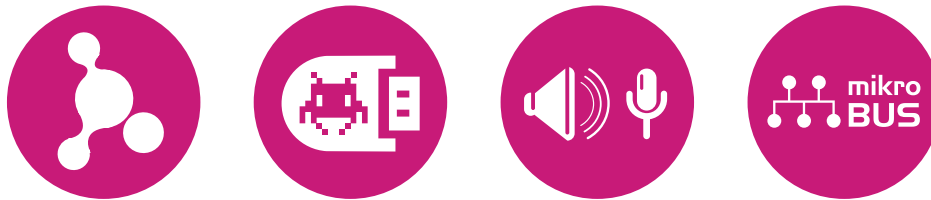


Figure 2: MCU card dimensions.



If you want to learn more about our products, please visit our website at www.mikroe.com

If you are experiencing some problems with any of our products or just need additional information, please place your ticket at www.mikroe.com/esupport

If you have any questions, comments or business proposals,
do not hesitate to contact us at office@mikroe.com

X-ON Electronics

Largest Supplier of Electrical and Electronic Components

Click to view similar products for [Daughter Cards & OEM Boards](#) category:

Click to view products by [MikroElektronika](#) manufacturer:

Other Similar products are found below :

[ADZS-21262-1-EZEXT 27911](#) [MPC5777C-416DS](#) [KITMPC5744DBEVM](#) [SPC56ELADPT144S](#) [TMDXRM46CNCD](#) [DM160216](#)
[MPC5777M-416DS](#) [EV-ADUCM350GPIOTHZ](#) [EV-ADUCM350-BIO3Z](#) [ATSTK521 1130](#) [MA160015](#) [MA180033](#) [MA240013](#) [MA240026](#)
[MA320014](#) [MA330014](#) [MA330017](#) [TLK10034SMAEVM](#) [MIKROE-2152](#) [MIKROE-2154](#) [MIKROE-2381](#) [TSSOP20EV](#) [DEV-11723](#)
[MIKROE-1108](#) [MIKROE-1516](#) [SPS-READER-GEVK](#) [AC244049](#) [AC244050](#) [AC320004-3 2077](#) [ATSMARTCARD-XPRO](#) [EIC - Q600 -](#)
[230](#) [ATZB-212B-XPRO](#) [SPC560PADPT100S](#) [SPC560BADPT64S](#) [MA180018](#) [EIC - Q600 -220](#) [AC164134-1](#) [BOB-12035](#) [BB-BONE-](#)
[BATT-01](#) [STM8/128-D/RAIS](#) [AC164127-6](#) [AC164127-4](#) [AC164134-3](#) [AC164156](#) [MA320021](#) [MA320024](#) [DFR0285](#)