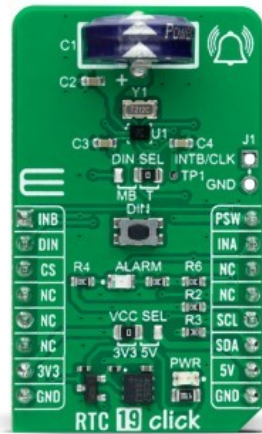


## RTC 19 Click



PID: MIKROE-5426

**RTC 19 Click** is a compact add-on board that measures the passage of real-time. This board features the [MAX31334](#), an I2C-configurable real-time clock with an integrated power switch from [Analog Devices](#). The MAX31334 provides information like seconds, minutes, hours, days, months, years, and dates based on a 32.768kHz quartz crystal through an I2C serial interface to transmit time and calendar data to the MCU. It also has an alarm function that outputs an interrupt signal to the MCU when the day of the week, hour, or minute matches with the pre-set time, as well as a programmable square-wave output, event detection input with timestamping, and backup supply. This Click board™ is suitable for general-consumer applications, including daily alarms, metering applications, and others requiring an accurate RTC for their operation.

RTC 19 Click is supported by a [mikroSDK](#) compliant library, which includes functions that simplify software development. This [Click board™](#) comes as a fully tested product, ready to be used on a system equipped with the [mikroBUS™](#) socket.

Mikroe produces entire development toolchains for all major microcontroller architectures.

Committed to excellency, we are dedicated to helping engineers bring the project development up to speed and achieve outstanding results.



ISO 27001: 2013 certification of informational security management system.  
 ISO 14001: 2015 certification of environmental management system.  
 OHSAS 18001: 2008 certification of occupational health and safety management system.



ISO 9001: 2015 certification of quality management system (QMS).

## Specifications

Type	RTC
Applications	Can be used for general-consumer applications, including daily alarms, metering applications, and others requiring an accurate RTC for their operation
On-board modules	MAX31334 - real-time clock from Analog Devices
Key Features	Low power consumption, automatic backup supply switch, integrated power switch, high accuracy, clock/calendar feature, programmable interrupt and clock output, automatic leap year recognition, and more
Interface	I2C
Compatibility	mikroBUS
Click board size	M (42.9 x 25.4 mm)
Input Voltage	3.3V or 5V

## Resources

[mikroBUS™](#)

[mikroSDK](#)

[Click board™ Catalog](#)

[Click boards™](#)

## Downloads

[RTC 19 click example on Libstock](#)

[MAX31334 datasheet](#)

[RTC 19 click schematic](#)

[RTC 19 click 2D and 3D files](#)

Mikroe produces entire development toolchains for all major microcontroller architectures.

Committed to excellency, we are dedicated to helping engineers bring the project development up to speed and achieve outstanding results.



ISO 27001: 2013 certification of informational security management system.  
 ISO 14001: 2015 certification of environmental management system.  
 OHSAS 18001: 2008 certification of occupational health and safety management system.



ISO 9001: 2015 certification of quality management system (QMS).

## X-ON Electronics

Largest Supplier of Electrical and Electronic Components

*Click to view similar products for [Daughter Cards & OEM Boards](#) category:*

*Click to view products by [MikroElektronika](#) manufacturer:*

Other Similar products are found below :

[MPC574XG-176DS](#) [SPC56ELADPT144S](#) [DM160216](#) [AIR FLOW CLICK](#) [TDC CLICK](#) [ADC 19 CLICK](#) [MIKROE-3591](#) [STEPPER 20 CLICK](#) [DC MOTOR 26 CLICK](#) [ANNA-B412 CLICK](#) [LED DRIVER 19 CLICK](#) [6DOF IMU 20 CLICK](#) [TWO-WIRE ETH CLICK](#) [USB UART ISO CLICK](#) [ANGLE 10 CLICK](#) [AIR MOTION CLICK](#) [EXPAND 11 CLICK](#) [THERMO 26 CLICK](#) [CLICK SHIELD FOR NUCLEO-64](#) [DIGI ISOLATOR CLICK](#) [DIFF PRESS 4 CLICK](#) [GROVE BASE FOR XIAO](#) [HEADPHONE AMP 3 CLICK](#) [EEPROM 8 CLICK](#) [SMART BUCK 3 CLICK](#) [DC MOTOR 25 CLICK](#) [STEP DOWN 10 CLICK](#) [ESP8684 CLICK](#) [LP WIFI CLICK](#) [AMBIENT 22 CLICK](#) [GYRO 9 CLICK](#) [SHUTTER CLICK](#) [SMART DOF 3 CLICK](#) [UWB 3 CLICK](#) [A5000 PLUG&TRUST CLICK](#) [WIREPAS CLICK](#) [HOD CAP CLICK](#) [DC MOTOR 12 CLICK](#) [PWR METER 3 CLICK](#) [BAROMETER 12 CLICK](#) [SPI ISOLATOR 5 CLICK](#) [EXPANSION BASE FOR XIAO WITH GROVE OLED](#) [NANO GPS 3 CLICK](#) [DC MOTOR 23 CLICK](#) [CAN FD 7 CLICK](#) [NANO POWER 3 CLICK](#) [ROUND DISPLAY FOR XIAO](#) [ULTRASONIC 5 CLICK](#) [NANOBEACON CLICK](#) [OPTO 7 CLICK](#)