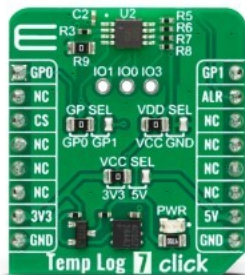


Temp-Log 7 Click



PID: MIKROE-5598

Temp-Log 7 Click is a compact add-on board used to measure and record the temperature of an environment over time. This board features the [TMP1826](#), a high-accuracy, 1-Wire compatible digital output temperature sensor from [Texas Instruments](#) with integrated 2-kbit EEPROM. It supports a wide operating temperature range from -20°C to $+85^{\circ}\text{C}$ with its high accuracy of $\pm 0.1^{\circ}\text{C}$ (typical)/ $\pm 0.3^{\circ}\text{C}$ (maximum) and comes with a factory-programmed 64-bit unique identification number for addressing and NIST traceability. Besides a programmable alarm function that outputs an interrupt signal to the MCU when a specific temperature event occurs, it also has three digital I/O pins configurable for general purposes or to identify the device's position on a shared bus. This Click board™ is suitable for the thermal management of industrial, consumer, and environmental applications where accurate temperature measurement is critical for proper operation.

Temp-Log 7 Click is supported by a [mikroSDK](#) compliant library, which includes functions that simplify software development. This [Click board™](#) comes as a fully tested product, ready to be used on a system equipped with the [mikroBUS™](#) socket.

Mikroe produces entire development toolchains for all major microcontroller architectures.

Committed to excellency, we are dedicated to helping engineers bring the project development up to speed and achieve outstanding results.



ISO 27001: 2013 certification of informational security management system.
 ISO 14001: 2015 certification of environmental management system.
 OHSAS 18001: 2008 certification of occupational health and safety management system.



ISO 9001: 2015 certification of quality management system (QMS).

Specifications

Type	Temperature & humidity, Temperature Logging
Applications	Can be used for the thermal management of industrial, consumer, and environmental applications
On-board modules	TMP1826 - 1-Wire compatible digital output temperature sensor from Texas Instruments
Key Features	High accuracy, broad temperature range, 16-bit temperature resolution, flexible user programmable address modes, 2kbit EEPROM, NIST traceable factory-programmed non erasable 64-bit identification number for device addressing, alert, user configurable I/Os, and more
Interface	1-Wire
Compatibility	mikroBUS
Click board size	S (28.6 x 25.4 mm)
Input Voltage	3.3V or 5V

Resources

[mikroBUS™](#)

[mikroSDK](#)

[Click board™ Catalog](#)

[Click boards™](#)

Downloads

[TMP1826 datasheet](#)

[Temp-Log 7 click 2D and 3D files](#)

[Temp-Log 7 Click schematic](#)

[Temp-Log 7 click example on Libstock](#)

Mikroe produces entire development toolchains for all major microcontroller architectures.

Committed to excellency, we are dedicated to helping engineers bring the project development up to speed and achieve outstanding results.



ISO 27001: 2013 certification of informational security management system.
 ISO 14001: 2015 certification of environmental management system.
 OHSAS 18001: 2008 certification of occupational health and safety management system.



ISO 9001: 2015 certification of quality management system (QMS).

X-ON Electronics

Largest Supplier of Electrical and Electronic Components

Click to view similar products for [Daughter Cards & OEM Boards](#) category:

Click to view products by [MikroElektronika](#) manufacturer:

Other Similar products are found below :

[MPC574XG-176DS](#) [SPC56ELADPT144S](#) [DM160216](#) [AIR FLOW CLICK](#) [ADC 19 CLICK](#) [MIKROE-3591](#) [STEPPER 20 CLICK](#) [DC MOTOR 26 CLICK](#) [ANNA-B412 CLICK](#) [LED DRIVER 19 CLICK](#) [6DOF IMU 20 CLICK](#) [TWO-WIRE ETH CLICK](#) [USB UART ISO CLICK](#) [ANGLE 10 CLICK](#) [AIR MOTION CLICK](#) [EXPAND 11 CLICK](#) [THERMO 26 CLICK](#) [CLICK SHIELD FOR NUCLEO-64](#) [DIGI ISOLATOR CLICK](#) [DIFF PRESS 4 CLICK](#) [GROVE BASE FOR XIAO](#) [HEADPHONE AMP 3 CLICK](#) [EEPROM 8 CLICK](#) [SMART BUCK 3 CLICK](#) [DC MOTOR 25 CLICK](#) [STEP DOWN 10 CLICK](#) [ESP8684 CLICK](#) [LP WIFI CLICK](#) [AMBIENT 22 CLICK](#) [GYRO 9 CLICK](#) [SHUTTER CLICK](#) [SMART DOF 3 CLICK](#) [UWB 3 CLICK](#) [A5000 PLUG&TRUST CLICK](#) [WIREPAS CLICK](#) [HOD CAP CLICK](#) [DC MOTOR 12 CLICK](#) [PWR METER 3 CLICK](#) [BAROMETER 12 CLICK](#) [SPI ISOLATOR 5 CLICK](#) [EXPANSION BASE FOR XIAO WITH GROVE OLED](#) [NANO GPS 3 CLICK](#) [DC MOTOR 23 CLICK](#) [CAN FD 7 CLICK](#) [NANO POWER 3 CLICK](#) [ROUND DISPLAY FOR XIAO](#) [LIGHTRANGER 11 CLICK](#) [RS485 8 CLICK](#) [NANOBEACON CLICK](#) [OPTO 7 CLICK](#)