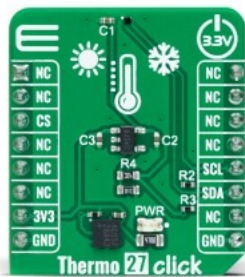


Thermo 27 Click



PID: MIKROE-5509

Thermo 27 Click is a compact add-on board that accurately measures temperature. This board features the [TMP114](#), a high-accuracy digital temperature sensor from [Texas Instruments](#). The TMP114 consists of an internal thermal BJT factory-calibrated sensor, 16-bit ADC, and a digital signal processor, offering a high accuracy of $\pm 0.3^{\circ}\text{C}$ and a temperature resolution of 0.0078°C . This I2C-configurable factory-calibrated temperature sensor has a high accuracy of $\pm 0.3^{\circ}\text{C}$, supporting high reliability and an ambient temperature range from -10°C to 85°C . This Click board™ is appropriate for the thermal management of portable electronics and industrial, consumer, and environmental applications.

Thermo 27 Click is supported by a [mikroSDK](#) compliant library, which includes functions that simplify software development. This [Click board™](#) comes as a fully tested product, ready to be used on a system equipped with the [mikroBUS™](#) socket.

Mikroe produces entire development toolchains for all major microcontroller architectures.

Committed to excellency, we are dedicated to helping engineers bring the project development up to speed and achieve outstanding results.



ISO 27001: 2013 certification of informational security management system.
 ISO 14001: 2015 certification of environmental management system.
 OHSAS 18001: 2008 certification of occupational health and safety management system.



ISO 9001: 2015 certification of quality management system (QMS).

Specifications

Type	Temperature & humidity
Applications	Can be used for the thermal management of portable electronics and industrial, consumer, and environmental applications
On-board modules	TMP114 - digital output temperature sensor from Texas Instruments
Key Features	Low power consumption, high precision, I2C interface, factory calibrated, high accuracy and resolution, high reliability and long-term stability, and more
Interface	I2C
Compatibility	mikroBUS
Click board size	S (28.6 x 25.4 mm)
Input Voltage	3.3V

Resources

[mikroBUS™](#)

[mikroSDK](#)

[Click board™ Catalog](#)

[Click boards™](#)

Downloads

[Thermo 27 click example on Libstock](#)

[AP7331 datasheet](#)

[TMP114 datasheet](#)

[Thermo 27 click schematic](#)

[Thermo 27 click 2D and 3D files](#)

Mikroe produces entire development toolchains for all major microcontroller architectures.

Committed to excellency, we are dedicated to helping engineers bring the project development up to speed and achieve outstanding results.



ISO 27001: 2013 certification of informational security management system.
 ISO 14001: 2015 certification of environmental management system.
 OHSAS 18001: 2008 certification of occupational health and safety management system.



ISO 9001: 2015 certification of quality management system (QMS).

X-ON Electronics

Largest Supplier of Electrical and Electronic Components

Click to view similar products for [Daughter Cards & OEM Boards](#) category:

Click to view products by [MikroElektronika](#) manufacturer:

Other Similar products are found below :

[MPC574XG-176DS](#) [SPC56ELADPT144S](#) [DM160216](#) [AIR FLOW CLICK](#) [ADC 19 CLICK](#) [MIKROE-3591](#) [STEPPER 20 CLICK](#) [DC MOTOR 26 CLICK](#) [ANNA-B412 CLICK](#) [LED DRIVER 19 CLICK](#) [6DOF IMU 20 CLICK](#) [TWO-WIRE ETH CLICK](#) [USB UART ISO CLICK](#) [ANGLE 10 CLICK](#) [AIR MOTION CLICK](#) [EXPAND 11 CLICK](#) [THERMO 26 CLICK](#) [CLICK SHIELD FOR NUCLEO-64](#) [DIGI ISOLATOR CLICK](#) [DIFF PRESS 4 CLICK](#) [GROVE BASE FOR XIAO](#) [HEADPHONE AMP 3 CLICK](#) [EEPROM 8 CLICK](#) [SMART BUCK 3 CLICK](#) [DC MOTOR 25 CLICK](#) [STEP DOWN 10 CLICK](#) [ESP8684 CLICK](#) [LP WIFI CLICK](#) [AMBIENT 22 CLICK](#) [GYRO 9 CLICK](#) [SHUTTER CLICK](#) [SMART DOF 3 CLICK](#) [UWB 3 CLICK](#) [A5000 PLUG&TRUST CLICK](#) [WIREPAS CLICK](#) [HOD CAP CLICK](#) [DC MOTOR 12 CLICK](#) [PWR METER 3 CLICK](#) [BAROMETER 12 CLICK](#) [SPI ISOLATOR 5 CLICK](#) [EXPANSION BASE FOR XIAO WITH GROVE OLED](#) [NANO GPS 3 CLICK](#) [DC MOTOR 23 CLICK](#) [CAN FD 7 CLICK](#) [NANO POWER 3 CLICK](#) [ROUND DISPLAY FOR XIAO](#) [LIGHTRANGER 11 CLICK](#) [RS485 8 CLICK](#) [NANOBEACON CLICK](#) [OPTO 7 CLICK](#)