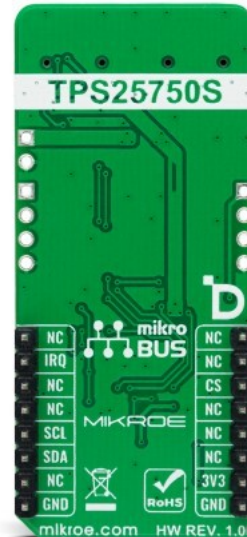


## USB-C Power Click



PID: MIKROE-5682

**USB-C Power Click** is a compact add-on board that provides a quick and easy way to supply power without carrying multiple adapters or cables. This board features the [TPS25750S](#), a highly integrated USB Type-C and Power Delivery (PD) controller with integrated power switches optimized for power applications from [Texas Instruments](#). The TPS25750S integrates fully managed power paths (5V/3A with 36mΩ sourcing switch) with robust protection (reverse and inrush current as well as over/under voltage protection) and control for external battery charger IC for a complete USB-C PD solution. Besides web-based GUI and pre-configured firmware, the TPS25750S also has some GPIOs and LED indicators that are user-defined for either status or control information. This Click board™ is optimized for applications supporting USB-C PD Power like power tools, power banks, retail automation, and other personal electronics and industrial applications.

USB-C Power Click is supported by a [mikroSDK](#) compliant library, which includes functions that simplify software development. This [Click board™](#) comes as a fully tested product, ready to be used on a system equipped with the [mikroBUS™](#) socket.

Mikroe produces entire development toolchains for all major microcontroller architectures.

Committed to excellency, we are dedicated to helping engineers bring the project development up to speed and achieve outstanding results.



ISO 27001: 2013 certification of informational security management system.  
 ISO 14001: 2015 certification of environmental management system.  
 OHSAS 18001: 2008 certification of occupational health and safety management system.



ISO 9001: 2015 certification of quality management system (QMS).

## Specifications

Type	USB-C PD
Applications	Can be used for applications supporting USB-C PD Power like power tools, power banks, retail automation, and other personal electronics and industrial applications
On-board modules	TPS25750S - USB Type-C and Power Delivery (PD) controller from Texas Instruments
Key Features	Integrated fully managed power paths, robust power path protection, optimized for power applications, I2C control for TI battery chargers, web-based GUI and pre-configured firmware, user-configurable GPIOs and LED indicators, and more
Interface	I2C
Compatibility	mikroBUS
Click board size	L (57.15 x 25.4 mm)
Input Voltage	3.3V

## Resources

[mikroBUS™](#)

[mikroSDK](#)

[Click board™ Catalog](#)

[Click Boards™](#)

## Downloads

[TPS25750S datasheet](#)

[USB-C Power click 2D and 3D files](#)

[USB-C Power click schematic](#)

[USB-C Power click example on Libstock](#)

Mikroe produces entire development toolchains for all major microcontroller architectures.

Committed to excellency, we are dedicated to helping engineers bring the project development up to speed and achieve outstanding results.



ISO 27001: 2013 certification of informational security management system.  
 ISO 14001: 2015 certification of environmental management system.  
 OHSAS 18001: 2008 certification of occupational health and safety management system.



ISO 9001: 2015 certification of quality management system (QMS).

## X-ON Electronics

Largest Supplier of Electrical and Electronic Components

*Click to view similar products for [Daughter Cards & OEM Boards](#) category:*

*Click to view products by [MikroElektronika](#) manufacturer:*

Other Similar products are found below :

[MPC574XG-176DS](#) [SPC56ELADPT144S](#) [DM160216](#) [AIR FLOW CLICK](#) [TDC CLICK](#) [ADC 19 CLICK](#) [MIKROE-3591](#) [STEPPER 20 CLICK](#) [DC MOTOR 26 CLICK](#) [ANNA-B412 CLICK](#) [LED DRIVER 19 CLICK](#) [6DOF IMU 20 CLICK](#) [TWO-WIRE ETH CLICK](#) [USB UART ISO CLICK](#) [ANGLE 10 CLICK](#) [AIR MOTION CLICK](#) [EXPAND 11 CLICK](#) [THERMO 26 CLICK](#) [CLICK SHIELD FOR NUCLEO-64](#) [DIGI ISOLATOR CLICK](#) [DIFF PRESS 4 CLICK](#) [GROVE BASE FOR XIAO](#) [HEADPHONE AMP 3 CLICK](#) [EEPROM 8 CLICK](#) [SMART BUCK 3 CLICK](#) [DC MOTOR 25 CLICK](#) [STEP DOWN 10 CLICK](#) [ESP8684 CLICK](#) [LP WIFI CLICK](#) [AMBIENT 22 CLICK](#) [GYRO 9 CLICK](#) [SHUTTER CLICK](#) [SMART DOF 3 CLICK](#) [UWB 3 CLICK](#) [A5000 PLUG&TRUST CLICK](#) [WIREPAS CLICK](#) [HOD CAP CLICK](#) [DC MOTOR 12 CLICK](#) [PWR METER 3 CLICK](#) [BAROMETER 12 CLICK](#) [SPI ISOLATOR 5 CLICK](#) [EXPANSION BASE FOR XIAO WITH GROVE OLED](#) [NANO GPS 3 CLICK](#) [DC MOTOR 23 CLICK](#) [CAN FD 7 CLICK](#) [NANO POWER 3 CLICK](#) [ROUND DISPLAY FOR XIAO](#) [ULTRASONIC 5 CLICK](#) [NANOBEACON CLICK](#) [OPTO 7 CLICK](#)