

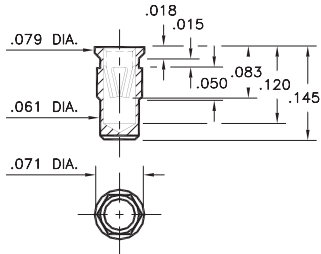
PIN RECEPTACLES

FOR .022" - .034" DIAMETER PINS AND .025" SQUARE PINS

0291

0291-0-15-XX-16-XX-10-0

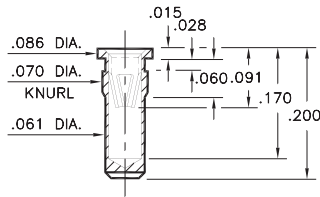
Hex press-fit in .067 plated through-hole



0293

0293-0-15-XX-16-XX-10-0

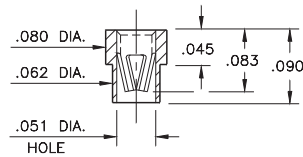
Press-fit in .067 mounting hole



0287

0287-0-15-XX-16-XX-10-0

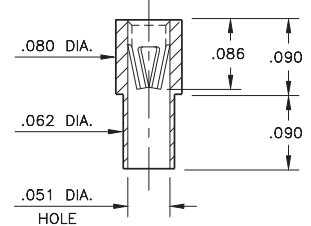
Solder mount in .065 min. mounting hole
Also available on 8mm wide carrier tape:
3,250 parts per 13" reel
See page 194.8 for Tape & Reel details



0285

0285-0-15-XX-16-XX-10-0

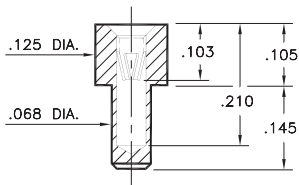
Solder mount in .065 min. mounting hole



0284

0284-0-15-XX-16-XX-10-0

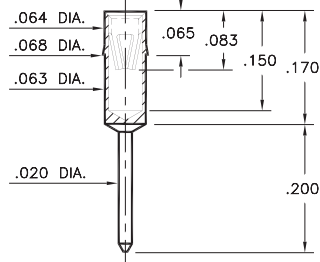
Solder mount in .070 min. mounting hole



8114

8114-0-15-XX-16-XX-04-0

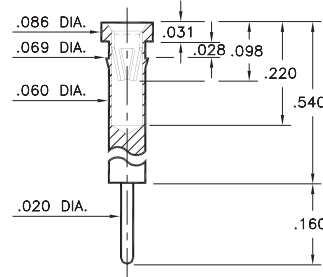
Press-fit from underside of pc board into .065 mounting hole



0407

0407-0-15-XX-16-XX-04-0

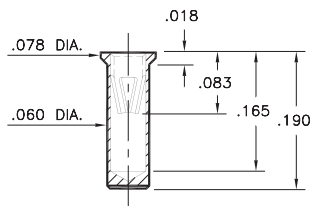
Press-fit in .066 mounting hole



0415

0415-0-15-XX-16-XX-10-0

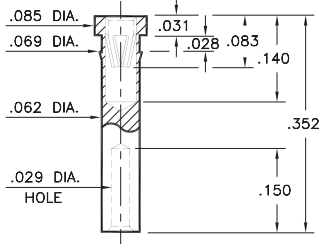
Solder mount in .063 min. mounting hole
Also available on 24mm wide carrier tape:
1,500 parts per 13" reel
See page 194.8 for Tape & Reel details



0303

0303-0-19-XX-16-XX-10-0

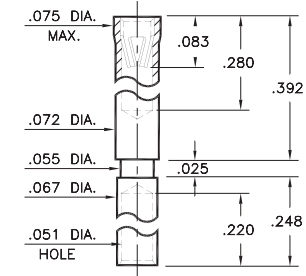
Press-fit in .067 mounting hole
Wire Crimp Termination. Accepts wire sizes 26 AWG Max. / 30 AWG Min.



0306

0306-0-19-XX-16-XX-10-0

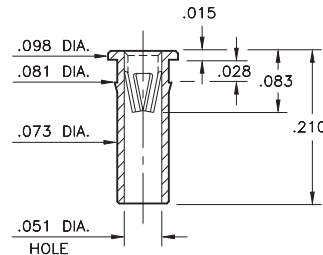
Wire Crimp Termination. Accepts wire sizes 20 AWG Max. / 24 AWG Min.



0273

0273-0-15-XX-16-XX-10-0

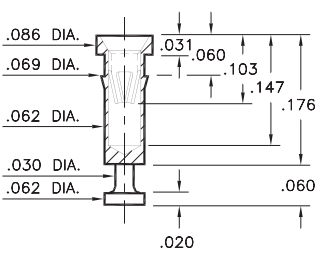
Press-fit in .078 mounting hole



7520

7520-0-15-XX-16-XX-10-0

Press-fit in .066 mounting hole



SPECIFICATIONS:

Shell Material: Brass Alloy 360, 1/2 Hard

Contact Material: Beryllium Copper Alloy 172, HT

Dimensions: Inches

Tolerances On: Lengths: ±.005

Diameters: ±.002

Angles: ± 2°



ORDER CODE: XXXX - X - XX - XX - 16 - XX - XX - 0

BASIC PART #

SPECIFY SHELL FINISH:

- 01 200 μ" TIN/LEAD OVER NICKEL
- ◆ 80 200 μ" TIN OVER NICKEL (RoHS)
- ◆ 15 10 μ" GOLD OVER NICKEL (RoHS)

SPECIFY CONTACT FINISH:

- 01 200 μ" TIN/LEAD OVER NICKEL
- ◆ 80 200 μ" TIN OVER NICKEL (RoHS)
- ◆ 27 30 μ" GOLD OVER NICKEL (RoHS)

SELECT CONTACT:

#16 CONTACT (DATA ON PAGE 256)

(For alternate contact choices, see group D on page 248)



X-ON Electronics

Largest Supplier of Electrical and Electronic Components

Click to view similar products for [IC & Component Sockets](#) category:

Click to view products by [Mill-Max](#) manufacturer:

Other Similar products are found below :

[714-43-102-31-012000](#) [0066-3-17-15-30-14-02-0](#) [0134-0-15-15-32-27-04-0](#) [614-DG5](#) [6527-0-00-15-00-00-03-0](#) [670](#) [672](#) [673](#) [712-93-120-41-001000](#) [714-93-104-31-018000](#) [8059-4G1-LF](#) [807-22-001-10-001101](#) [807-22-001-10-003101](#) [807-22-001-10-004101](#) [807-22-001-10-006101](#) [807-22-001-30-011101](#) [807-22-001-30-012101](#) [807-22-001-30-013101](#) [807-22-001-30-014101](#) [8-1437531-4](#) [8150-6P10](#) [833-93-034-10-001000](#) [835-43-014-10-001000](#) [851-41-006-10-001000](#) [851-43-008-20-001000](#) [851-43-014-20-001000](#) [851-93-006-20-001000](#) [851-93-010-20-001000](#) [852-10-026-10-001000](#) [853-43-020-10-001000](#) [86.010.0053.0](#) [116-43-306-41-003000](#) [116-43-308-41-007000](#) [116-87-308-41-007101](#) [PX-68LCC](#) [PX-84LCC](#) [121-13-318-41-001000](#) [121-13-320-41-001000](#) [121-13-308-41-001000](#) [123-43-314-41-801000](#) [123-43-420-41-001000](#) [123-43-636-41-001000](#) [123-87-320-41-001101](#) [122-13-316-41-001000](#) [123-13-624-41-001000](#) [123-43-306-41-001000](#) [123-43-322-41-801000](#) [123-43-428-41-001000](#) [123-43-624-41-001000](#) [12-3513-11](#)