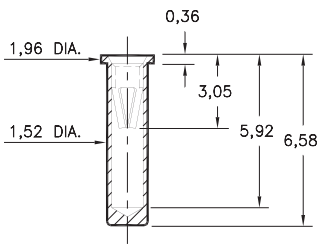


# PIN RECEPTACLES

FOR 0,56 - 0,81 DIAMETER PINS

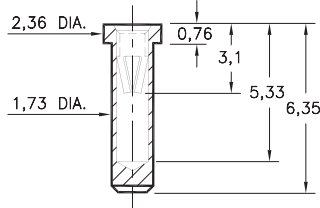
## 0295

**0295-0-15-XX-06-XX-10-0**  
Solder mount in 1,60 min. mounting hole  
Also available on 24mm wide carrier tape:  
1,000 parts per 330mm reel  
Order as: 0295-0-57-XX-06-XX-10-0



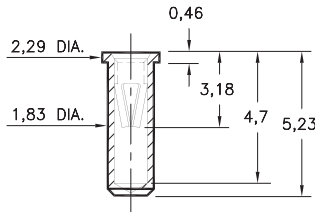
## 0292

**0292-0-15-XX-06-XX-10-0**  
Solder mount in 1,8 min. mounting hole



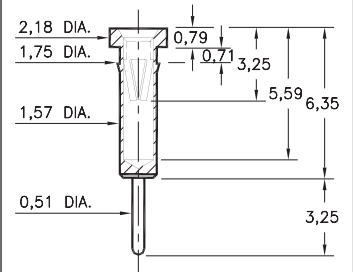
## 0294

**0294-0-15-XX-06-XX-10-0**  
Solder mount in 1,93 min. mounting hole



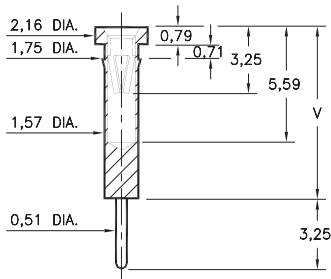
## 0398

**0398-0-15-XX-06-XX-04-0**  
Press-fit in 1,68 mounting hole



## 0397

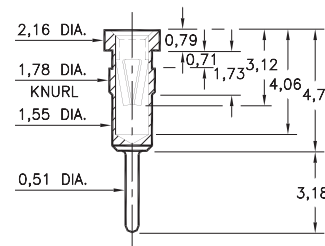
**0397-X-15-XX-06-XX-04-0**  
Press-fit in 1,68 mounting hole



Basic Part Number	Length V
<b>0397-0</b>	8,97
<b>0397-1</b>	8,46
<b>0397-2</b>	10,49

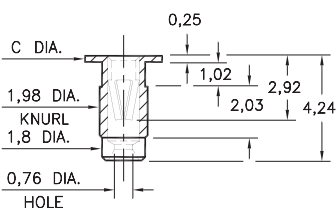
## 0297

**0297-0-15-XX-06-XX-04-0**  
Press-fit in 1,7 mounting hole



## 9019/9039

**90X9-0-19-XX-06-XX-10-0**  
Press-fit in 1,91 mounting hole



Basic Part Number	Head Dia. C
<b>9019-0</b>	3,18
<b>9039-0</b>	2,54

### SPECIFICATIONS:

**Shell Material:** Brass Alloy 360, 1/2 Hard

**Contact Material:** Beryllium Copper Alloy 172, HT

**Dimensions:** Millimeters

**Tolerances On:** Lengths: ± 0,13

Diameters: ± 0,051

Angles: ± 2°



**ORDER CODE:** XXXX - X - 1X - XX - 06 - XX - XX - 0

**BASIC PART #**

**SPECIFY SHELL FINISH:**

- 01** 5,08µm TIN/LEAD OVER NICKEL
- ◆ **80** 5,08µm TIN OVER NICKEL (RoHS)
- ◆ **15** 0,25µm GOLD OVER NICKEL (RoHS)

**SPECIFY CONTACT FINISH:**

- 01** 5,08µm TIN/LEAD OVER NICKEL
- ◆ **80** 5,08µm TIN OVER NICKEL (RoHS)
- ◆ **27** 0,76µm GOLD OVER NICKEL (RoHS)

**SELECT CONTACT:**

**#06** CONTACT (DATA ON PAGE 255)

(For alternate contact choices, see group D on page 248)



## X-ON Electronics

Largest Supplier of Electrical and Electronic Components

*Click to view similar products for [IC & Component Sockets](#) category:*

*Click to view products by [Mill-Max](#) manufacturer:*

Other Similar products are found below :

[0066-3-17-15-30-14-02-0](#) [670](#) [672](#) [673](#) [694-13-640-00-672-000](#) [712-93-120-41-001000](#) [714-93-104-31-018000](#) [8059-4G1-LF](#) [807-22-001-10-001101](#) [807-22-001-10-006101](#) [807-22-001-30-011101](#) [807-22-001-30-012101](#) [807-22-001-30-013101](#) [807-22-001-30-014101](#) [8-1437531-4](#) [8150-6P10](#) [833-93-034-10-001000](#) [851-41-006-10-001000](#) [851-43-008-20-001000](#) [851-43-014-20-001000](#) [851-93-006-20-001000](#) [851-93-010-20-001000](#) [853-43-020-10-001000](#) [86.010.0053.0](#) [116-43-308-41-007000](#) [PX-68LCC](#) [121-13-318-41-001000](#) [121-13-320-41-001000](#) [121-13-308-41-001000](#) [123-43-314-41-801000](#) [123-43-420-41-001000](#) [123-87-320-41-001101](#) [122-13-316-41-001000](#) [123-13-624-41-001000](#) [123-43-306-41-001000](#) [12-3513-11](#) [123-91-320-41-001000](#) [126-43-310-41-002000](#) [AKSUN 37V-T](#) [1437503-9](#) [1437504-1](#) [146-44-308-41-013000](#) [APO-320-G-T](#) [146-43-308-41-012000](#) [160-10-308-00-001000](#) [160-40-320-00-001000](#) [214-99-306-01-670800](#) [232-1270-02-0602](#) [2-382761-4](#) [2-5331677-4](#)